

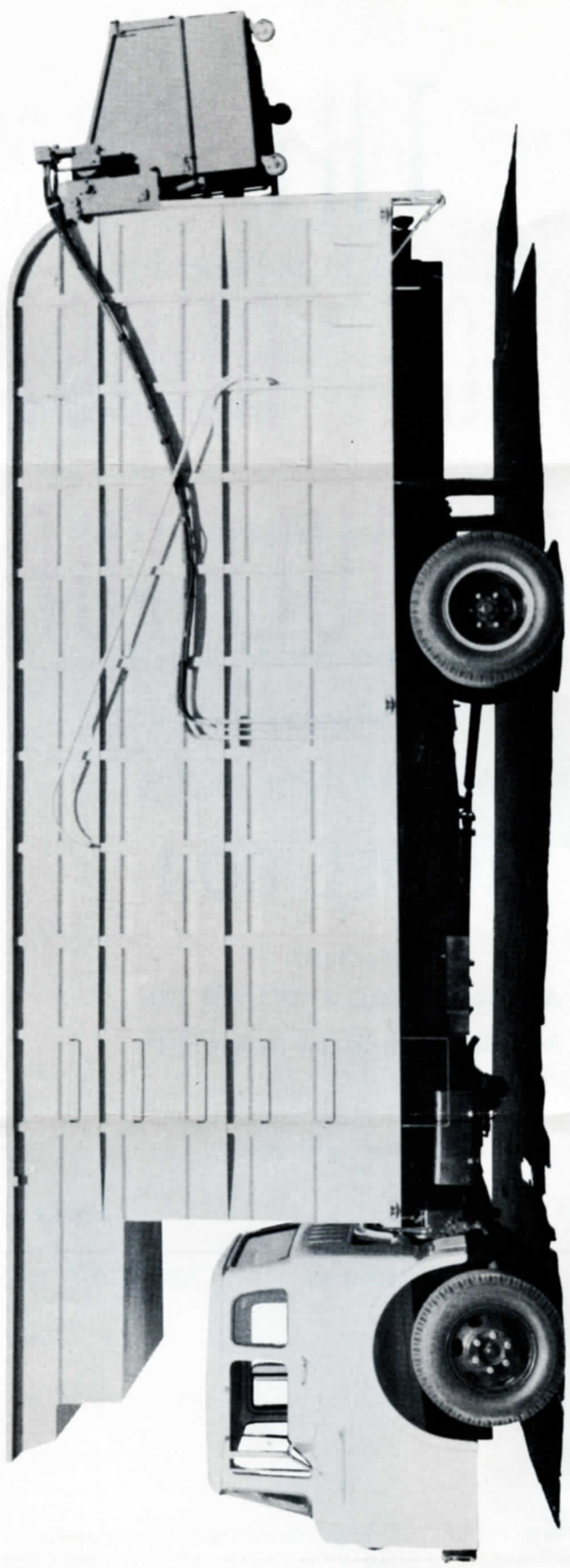
THE
ADVANCE RUBBISH
ACCUMULATOR

MODEL 80-1

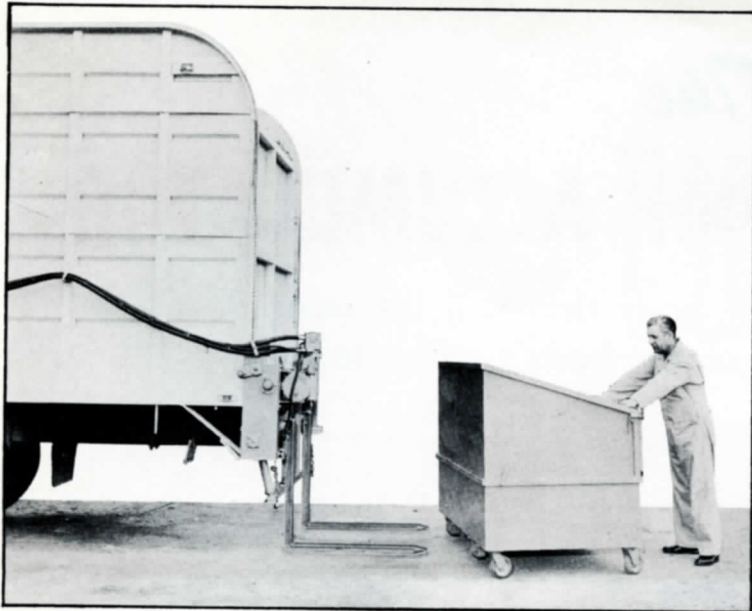
MANUFACTURED BY
ADVANCE AXLE & TRAILER CO.
2430 Crystal Street, Los Angeles, Calif.

SOLD BY





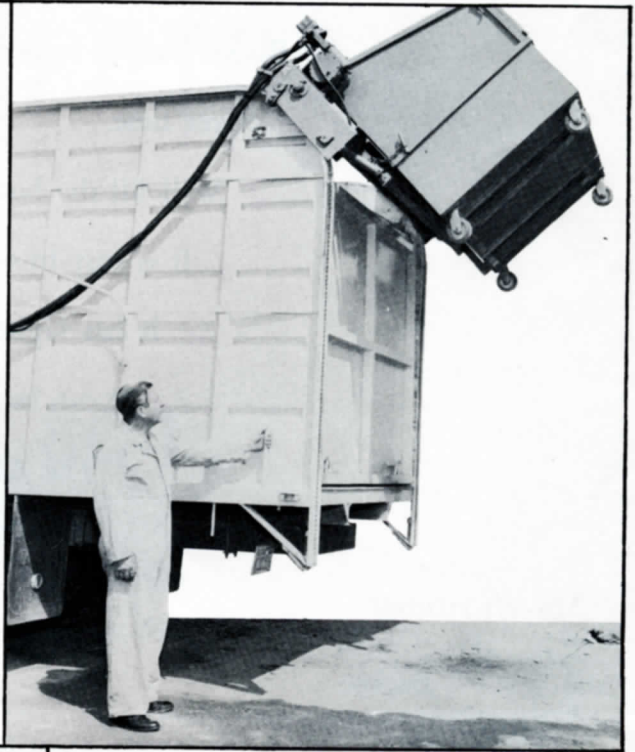
The Advance Rubbish Accumulator Mounted on Truck Body



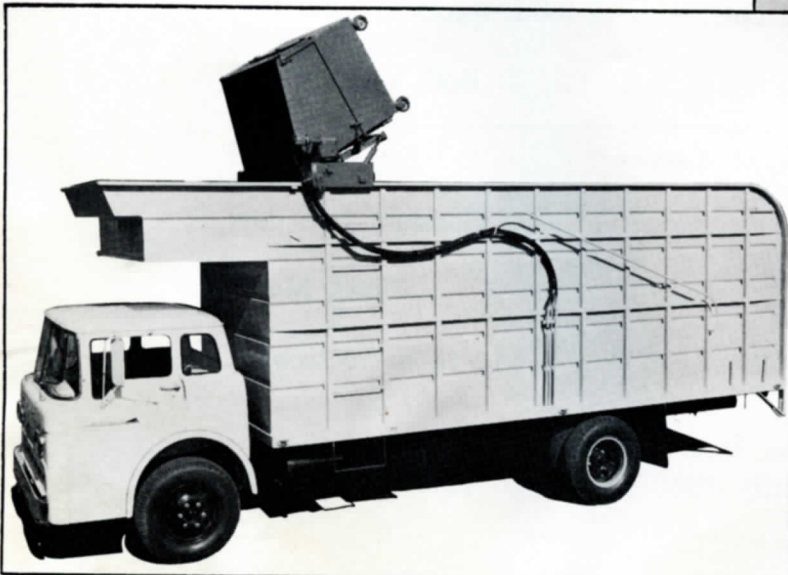
Accumulator equipped with forks so box can be easily removed and left at any location.

A control lever on both sides for convenient throttle control and operation.

Hydraulic power lifts the bucket to travel to any desired position.



With the use of a lever bucket tilts to dump position.



The

ADVANCE RUBBISH ACCUMULATOR

An accumulator for your rubbish body that will lift heavy loads and dump it at any desired position of the body's entire length.

Check these advantages

- ✓ It weighs 1390 pounds.
- ✓ Can be used in narrow alleys.
- ✓ Bucket can be loaded from either side and the rear.
- ✓ Saves time.
- ✓ Will fill the body evenly from end to end.
- ✓ It is easy to operate.
- ✓ It has highest quality hydraulics for long life.
- ✓ It can be used on any length body or semi.
- ✓ The Advance Rubbish Accumulator is a real
LABOR SAVER

Specifications

Bucket	39 Cu. Ft.
Capacity	1500 Lbs.; with 12 tooth sprocket, 1800 Lbs.
Control Levers	Both sides at rear
Actuating Mechanism	Hydraulic
Hydraulics	Constant free flow
Source of Power	Truck Motor
Rate of Climb	12 ft. in 10 seconds

This loader may be purchased from your local distributor and tailored to fit your requirements. Also Model 80-2 — Load capacity 3000 Lbs.; with 12 tooth sprocket, 3600 Lbs. Weight 1590 Lbs.