

MODERN REFUSE COLLECTION



AMERICAN-LAFRANCE Refuse Col-
lectors are manufactured under
United States and Canadian pat-
ents. Additional patents pending.



Copyright 1933 by AMERICAN-LA-
FRANCE AND FOAMITE CORPORA-
TION, Elmira, N.Y.

THE MODERN METHOD OF COLLECTING REFUSE

THE world moves on . . . progress is inevitable. Pneumatic-tired, easy riding buses have replaced the old horse-drawn street cars. Smooth concrete and asphalt pavements have superseded dirt roads and cobble-stone pavements. Electric boulevard lights now illuminate our streets instead of the feeble gas burners. Speedy, powerful motor fire apparatus race to fires instead of little hand-drawn wooden "fire-tubs."

The citizens of our communities today expect and demand all of the modern necessities that make for comfort, convenience, health and efficiency.

And, by the same token, city authorities must give attention to the methods used for collecting rubbish, ashes, garbage, and other city refuse. No longer will citizens tolerate dust and ashes blowing in on their homes. No longer will they be annoyed by the clattering of empty ash cans. No longer will they permit open wagons filled with foul-smelling, nauseating garbage to drive up to their premises. No longer will they care to see leaky wagons dripping garbage along their streets. And, the modern community need not put up with such conditions, for now the solution to such intolerable city waste disposal practices is answered with



THE AMERICAN-LAFRANCE REFUSE COLLECTOR

WITH the use of the AMERICAN-LAFRANCE Refuse Collector, garbage collection becomes a thing of civic pride instead of an eye-sore. Now, cities are assured of an economical, sanitary, dustless, odorless method of collecting every type of city waste material. The AMERICAN-LAFRANCE Refuse Collector is the answer to the urgent demand for an enclosed refuse collector that will overcome all the disgusting, inefficient features of open wagon refuse collection . . . as well as incorporating all of the desirable features and refinements of design and operation which up to now have been considered impossible in the field of city waste disposal.

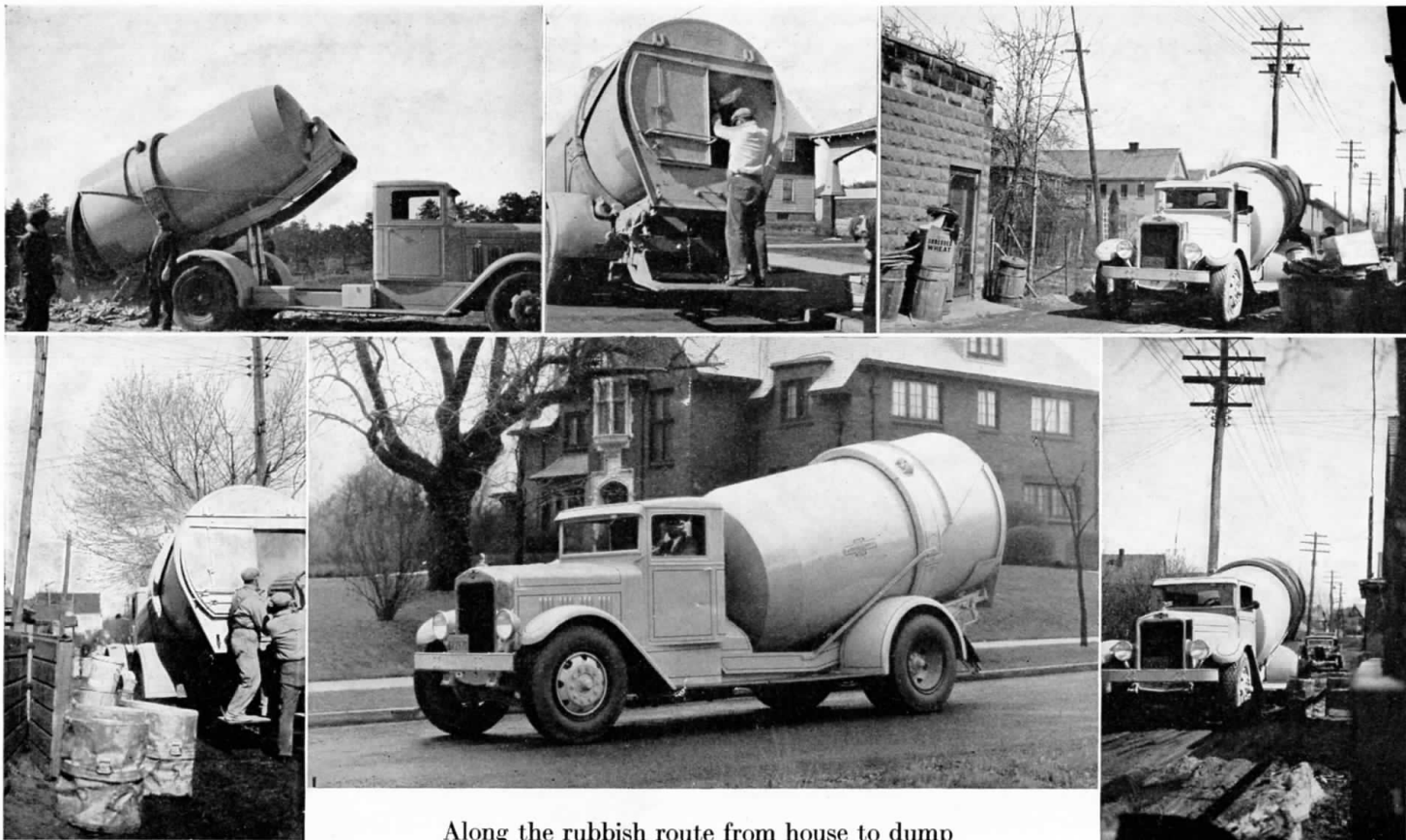
AN ENGINEERED PRODUCT

THE AMERICAN-LAFRANCE Refuse Collector is a specialized engineered product—not a makeshift or an adaptation. It is designed for one purpose—the efficient and sanitary disposal of all types of city waste—and every part is designed and built for

these special requirements. The AMERICAN-LAFRANCE Refuse Collector has made the *ideal* of those in charge of city waste disposal an *actuality*.

Years of study, experimentation and development have built an unusual background for the AMERICAN-LAFRANCE Refuse Collector. Every phase of the waste collection problem was carefully studied before the design of the machine was decided upon. Every detail was tested under the most severe operating conditions and thoroughly proved before its adoption. From the rough forgings and castings to the final inspection, the care given to the construction of the AMERICAN-LAFRANCE Refuse Collector has no equal in this field. Modern engineering, rigid testing of materials and parts, manufacturing methods that insure real value and merit make the machine of interest to city authorities in charge of waste disposal.

The AMERICAN-LAFRANCE Refuse Collector is a proven engineered product . . . a product that has



Along the rubbish route from house to dump

been thoroughly tested under searching scrutiny in widely different methods of refuse collection in many and various cities.

DESIGN, CONSTRUCTION, OPERATION

THE AMERICAN-LAFRANCE Refuse Collector is new in principle, design and operation. It consists essentially of a large steel tank installed on a powerful modern chassis built especially for this purpose. The tank is mounted on a cradle in such a way that it is pitched forward at an angle of approximately thirteen degrees. The tank can be rotated in either direction. The machine is loaded from the rear and the rear door openings are unique in that they can be opened in three ways to permit various sizes of materials to be loaded in the tank.

In operation, the tank rotates at an idling speed of from six to twelve revolutions per minute. Due to this rotation, to the angle at which the body is pitched and to a set of low steel vanes welded to the inside of the body at the proper angle, material loaded into the rear is worked or pushed forward automatically and compacts itself rapidly enough to always leave loading space at the rear, until the body is quite completely filled.

The AMERICAN-LAFRANCE Refuse Collector dumps its load automatically. The body is first

raised to the proper angle to permit quick unloading by a powerful hydraulic hoist. When raised to the proper angle, the tail gate is automatically opened. The body is rotated in a reverse direction from that while loading and this rotation breaks up the waste material and forces it out at the rear.

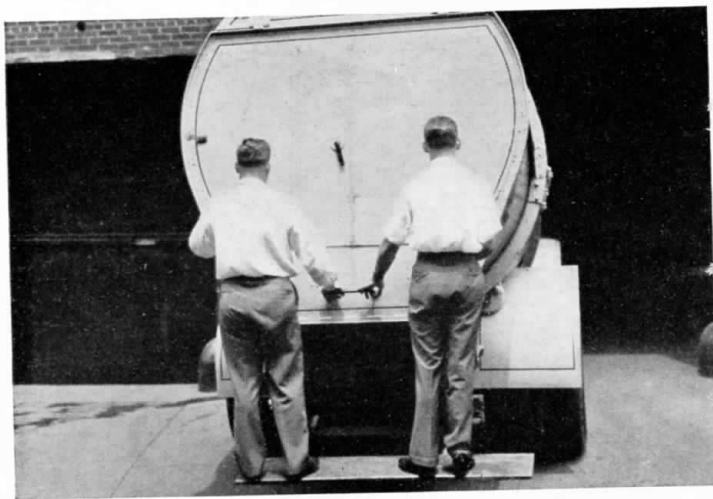
The AMERICAN-LAFRANCE Refuse Collector is one-man operated. All controls are so arranged that the driver does not have to leave his seat to operate or dump. It is as simple to drive as any commercial truck. The device itself is noiseless in operation and due to the low loading height, objectionable noise from the banging of cans is reduced to a minimum.

The AMERICAN-LAFRANCE Refuse Collector *is the only mechanized collector in which collected material cannot come in contact with any mechanical parts.*

PRACTICABILITY

EVERY type of city refuse is handled by the AMERICAN-LAFRANCE Refuse Collector with exceptional ease . . . garbage . . . ashes . . . street sweepings . . . rubbish . . . and dried leaves. Every day new uses are being found for it. For snow removal this machine is merely backed up behind the snow loader, or vice versa, until loaded. The load is then easily ejected at any temperature. Three or four turns of the body will break it up and dump it automatically.

REASONS WHY YOU SHOULD BUY THE



CONVENIENCE

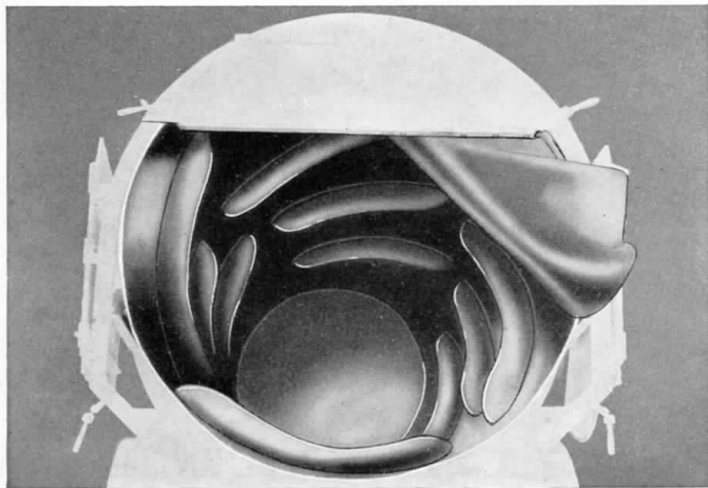
THE rear step and large-sized running boards and grab handles on the AMERICAN-LAFRANCE Refuse Collector make riding easy for the crew especially when turning corners or making short detours. The crew working behind the machine are always out of the way of traffic.



EASY LOADING

THE AMERICAN-LAFRANCE Refuse Collector is easy to load. Refuse need only be lifted 44 inches from the step or approximately 60 inches from the ground as against 6 feet or more on open body types. Actual tests show that this machine can be loaded 50% faster than any side loading operation.

AMERICAN-LA FRANCE REFUSE COLLECTOR



SELF TRIMMING

THE AMERICAN-LA FRANCE Refuse Collector is the only self-trimming refuse collector on the market. The material loaded trims itself automatically—not only saving time but greatly increasing the tonnage of the pay-load. Will load from 25% to 50% more garbage than any other body types.



ADAPTABILITY

THE rear doors of the AMERICAN-LA FRANCE Refuse Collector are arranged to meet every contingency. There is a large opening for bulky materials and smaller openings for handling garbage and ashes. Bed springs and the like may be easily loaded into the machine.

MORE REASONS



SAFETY

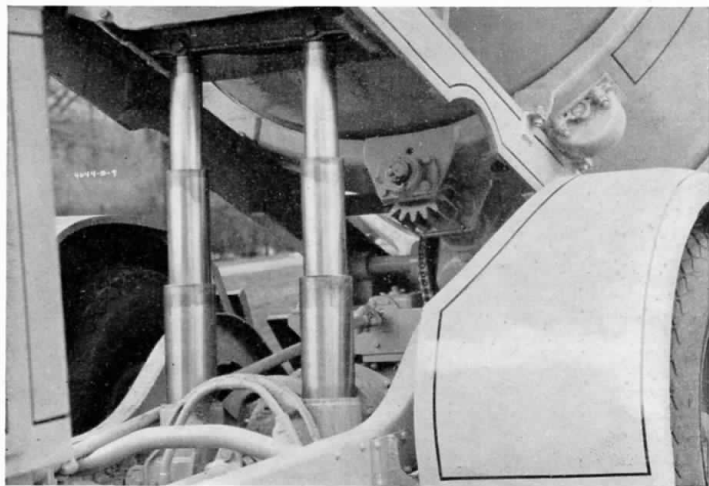
THE AMERICAN-LAFRANCE Refuse Collector is loaded entirely from the rear. Present day traffic conditions do not permit safe side loading. Also, in congested districts where refuse collecting must be done in narrow alleys, this machine operates more easily than open body machines.



ODORLESS, DUSTLESS AND SANITARY

THE loading door and large dumping tail gate of this Refuse Collector are sealed against leakage by metallic joints. When loaded and ready for transportation, this machine is odorless, leakproof, sanitary. No possible chance of refuse dropping, ashes blowing, or any foul odors emitting from it.

AND, STILL MORE REASONS



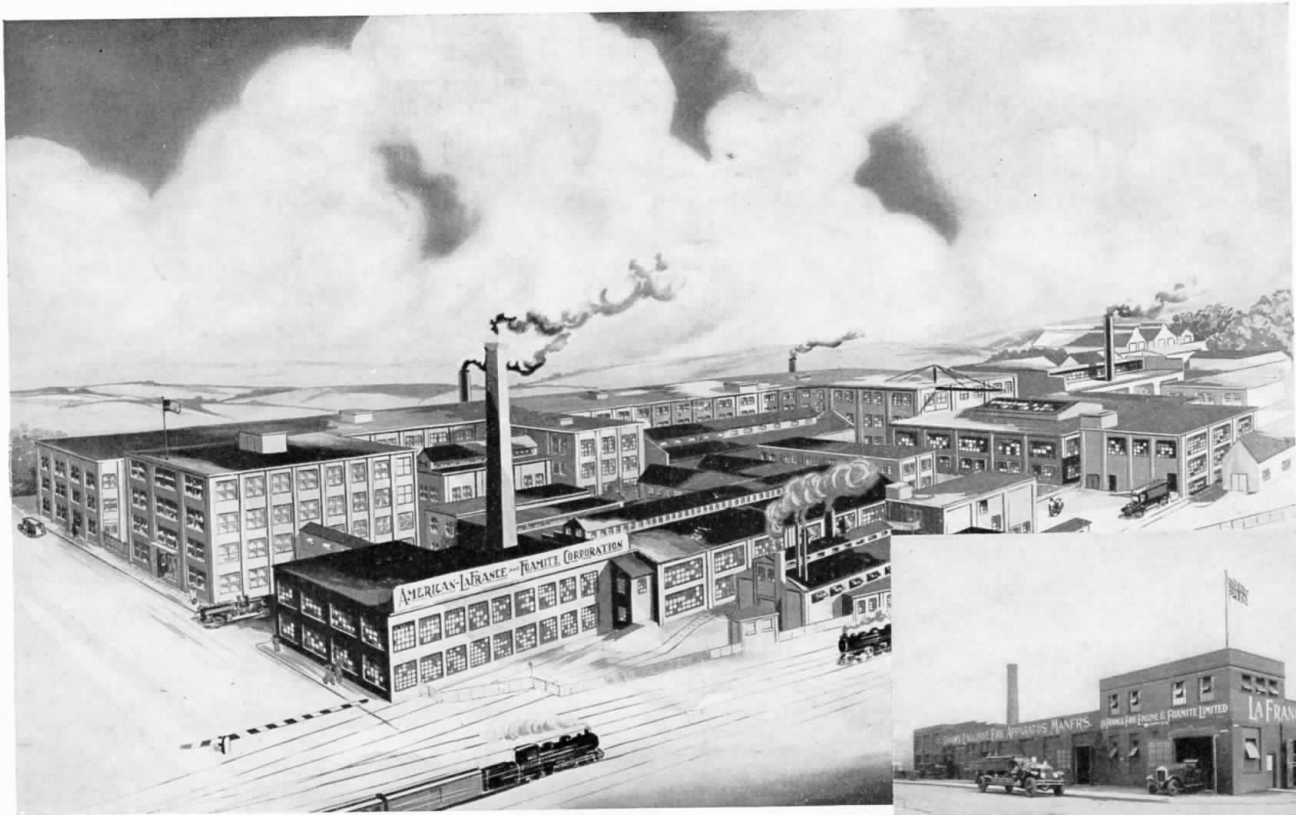
HYDRAULIC HOIST

THE body is easily raised to the desired angle by means of a powerful, telescopic, hydraulic hoist. The action of this twin hoist is firm and positive at any dumping angle. This is especially important on uneven dumping ground. The driver does not need to leave his seat to dump the load.



QUICK UNLOADING

THE AMERICAN-LAFRANCE Refuse Collector dumps its load quickly and positively. The tail gate opens automatically and the compacted material in the body is broken up and forced out of the rear. Dumping the load under adverse conditions is made possible with the use of this machine.



Above, main factory at Elmira, N.Y. Right, factory at Toronto, Canada

THE COMPANY BEHIND THE PRODUCT

IN PRESENTING the AMERICAN-LAFRANCE Refuse Collector, a new line is added to the already distinguished line of products built by the AMERICAN-LAFRANCE AND FOAMITE CORPORATION. The engineering skill and the manufacturing methods and the pride in the name "AMERICAN-LAFRANCE," which is recognized universally, and which for eighty-seven years has made motor fire apparatus bearing that name the standard of the world, are back of the refuse collector described and illustrated in this booklet.

The history of the AMERICAN-LAFRANCE AND FOAMITE CORPORATION dates back to the year 1845—over 87 years ago. And, through all these years, AMERICAN-LAFRANCE AND FOAMITE CORPORATION has gained a well-earned reputation for quality, workmanship, expert design, unquestionable responsibility, and square dealing. And, the same quality . . . the same expert design . . . the same responsible practices . . . apply to every device bearing the AMERICAN-LAFRANCE AND FOAMITE name—including, of course, the AMERICAN-LAFRANCE Refuse Collector.

A most important factor to buyers of automotive

equipment is service and this applies doubly in connection with equipment used for public service because delays and lay-ups may mean a menace to health and public convenience. Reliability is a feature of prime importance but, in addition to reliability of operation, the purchaser of equipment used for refuse collection must be assured of adequate and continued service by the manufacturer. AMERICAN-LAFRANCE Service is in full keeping with AMERICAN-LAFRANCE quality manufacturing. Direct factory branches and service stations over the entire country assure the purchaser of AMERICAN-LAFRANCE Refuse Collectors of prompt, efficient service at all times, day or night.

A corps of trained engineers is available for consultation with Public Works officials and those in charge of municipal refuse collection and disposal. Trial or demonstrating apparatus, in suitable capacities, is always available for municipalities or contractors and may be procured on request to any AMERICAN-LAFRANCE district office or by request direct to the main factories at Elmira, New York, or Toronto, Canada. Your city deserves the modern, efficient method of refuse collection.

AMERICAN-LA FRANCE AND FOAMITE CORPORATION

ENGINEERS AND MANUFACTURERS
FACTORY AND MAIN OFFICES AT
ELMIRA, NEW YORK

SALES OFFICES

ATLANTA, GA.	181-183 Spring St.	KANSAS CITY, Mo.	1920-26 McGee St.
BOSTON, MASS.	28 Brighton Ave.	LOS ANGELES, CALIF.	749 Kohler St.
CHICAGO, ILL.	445 North Lake Shore Drive	NEW YORK, N.Y. Fisk Bldg.	Broadway at 57th St.
CLEVELAND, OHIO	1415 W. 9th St.	PITTSBURGH, PA. Investment Bldg.	239 Fourth Ave.
DALLAS, TEX.	5403 South Harwood St.	SAN FRANCISCO, CALIF.	2829 16th St.
DENVER, COLO.	1741-43 Arapahoe St.	WASHINGTON, D. C.	Room 304 1343 8th St.
	YORK, PA.		274 W. Market St.

LA FRANCE FIRE ENGINE AND FOAMITE LTD.

FACTORY AND GENERAL OFFICES
TORONTO, 9, ONTARIO, CANADA, 195 WESTON ROAD

MONTREAL, QUE., CANADA	1012 Mayor Bldg.	VANCOUVER, B. C.	3846 33rd Ave. W.
----------------------------------	------------------	--------------------------	-------------------

REFUSE
AMERICAN-LA FRANCE
COLLECTOR

A decorative graphic consisting of a central horizontal banner with a double-line border. The banner has a central rectangular section and two pointed, ribbon-like ends extending outwards. The word "REFUSE" is written in a stylized, outlined font within the top pointed end. The words "AMERICAN-LA FRANCE" are written in a bold, serif font within the central rectangular section. The word "COLLECTOR" is written in a stylized, outlined font within the bottom pointed end.