

ENGINEERED

TO DO IT...

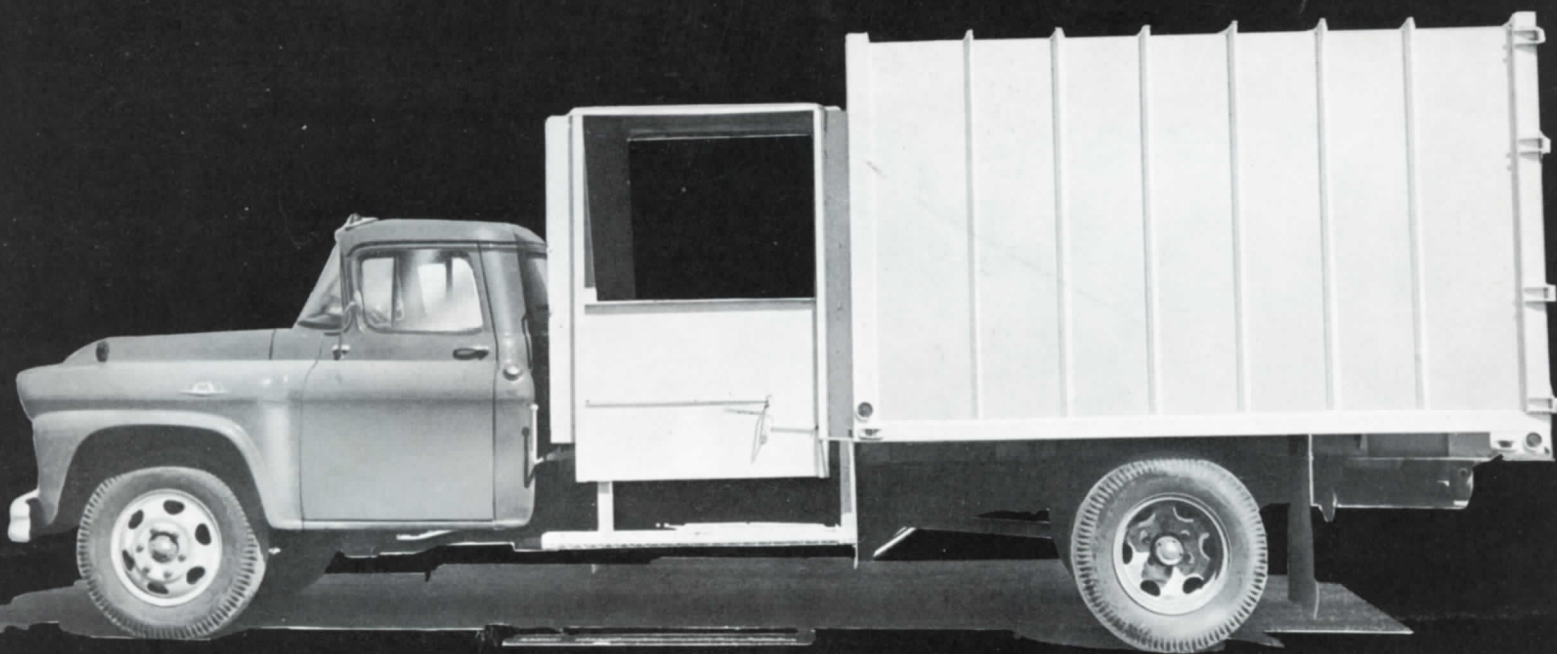
BUILT

TO TAKE IT...

**BAUGHMAN HI-SPEED**

# PAK-O-MATIC

**REFUSE BODY**



**BEST BUY FOR RESIDENTIAL AND  
COMMERCIAL COLLECTIONS**

*Low in Cost . . . Upkeep a Minimum*



**BAUGHMAN MANUFACTURING CO., INC.**

Jerseyville, Illinois

**RECEIVING HOPPER** — Can be loaded from either side. Big 5 cubic yard capacity. Large openings permit hauling any material crew can load, including large bulky objects.



**CREW RAMP** — One on both sides . . . each big enough for three men.

**DOORS** — The Baughman Hi-Speed Pak-O-Matic can be loaded from either side. Convenient location of receiving hopper and packer controls means faster coverage of routes . . . automatic return of packer blade simplifies and speeds-up operations.



### **TWIN TELESCOPING HOIST FOR FAST, EASY UNLOADING**

The Baughman Pak-O-Matic's TWIN TELESCOPING HOIST tilts the body back to desired discharge position.

# BAUGHMAN PAK-O-MATIC



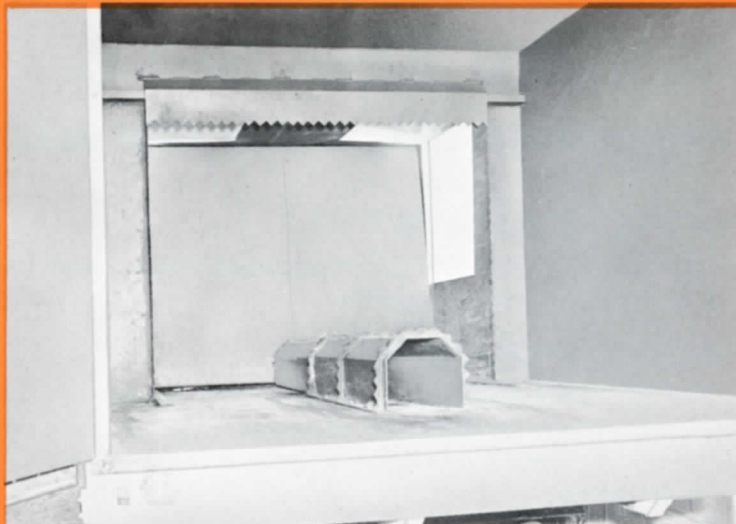
*Better Service through Better Engineering  
Service and parts from 200 service branches*



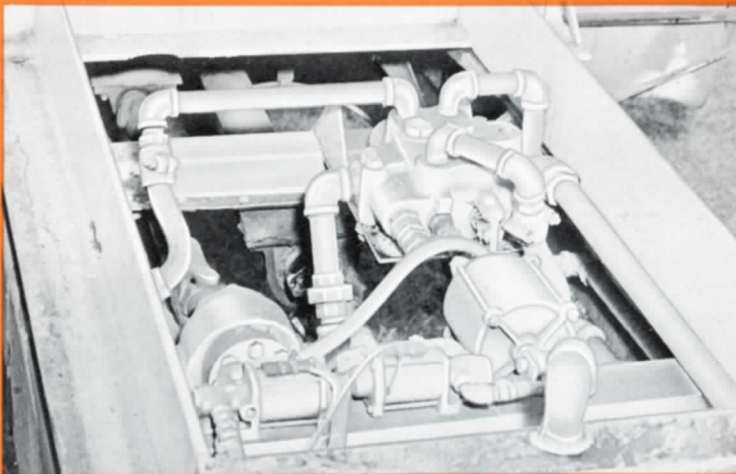
**BAUGHMAN MANUFACTURING**  
JERSEYVILLE, MISSOURI



# HI-SPEED MATIC



**PACKER RAM AND BLADE**—single-stage operation for packing as well as "breaking" load for discharge. Ruggedly constructed 3/16" packer blade stays flush with front of body when receiving hopper is being loaded.



**POWER**—both single-stage ram and telescoping hoist are hydraulically-operated from P.T.O. drive. Simple positive hydraulic pump and valves with electro-vac controls easily and inexpensively maintained. Eliminates extra expense of costly auxiliary chains and motors.

**WATERTIGHT BODY**—Baughman Pak-O-Matic body is **square**—takes more material because it packs easier . . . no "wasted" space . . . entire body is loadable. Rugged 12 gauge steel heavily reinforced. Smooth interior . . . no grooves or crevices to hold back material. Body is sealed against unsanitary spillage of liquid waste materials on streets and alleys.

Printed in U.S.A.  
Form No. A-433

**MANUFACTURING CO., INC.**  
VILLE, ILLINOIS, U.S.A.

*WORLD'S LARGEST MANUFACTURER OF  
AUTOMATIC SELF-UNLOADING BODIES*

*The Baughman Hi-Speed Pak-O-Matic gives you many time and labor saving features not found in other bodies.*

**MORE CAPACITY!**

Baughman Pak-O-Matic body is square. Takes more material because it packs easier. No wasted space — entire body loadable.

**MORE POWER!**

OVER 20 TONS pressure, exerted by the single stage packer ram throughout the stroke. Applied most effectively in direction of compaction at lower hydraulic pressure than is required for diagonally directed rams on competitive makes. Result: More material packed and carried — fewer trips to dump.

**VERSATILE!**

Can be loaded from either side. Big 5 yd. receiving hopper and convenient packer controls mean faster coverage of routes. Automatic return of packer blade can be stopped or started at any point (safety switch).

**LOW UPKEEP!**

Simple and durable. Engineered for low-cost upkeep and operation.

**PAK-O-MATIC SPECIFICATIONS**

UNIT RATED CAPACITY	21 Yds.	24 Yds.
Body Capacity .....	18 Yds.	21½ Yds.
Hopper Capacity .....	5 Yds.	5 Yds.
Hopper Length .....	5 Ft.	5 Ft.
Overall Length .....	16 Ft.	18 Ft.
Height From Truck Frame .....	7' 2"	7' 2"
Overall Width .....	7' 10"	7' 10"
Weight Approximate (Complete with oil — Less P.T.O.) .....	7000#	7450#
Side Loading Doors .....	41" x 36"	41" x 36"
Roof Doors .....	46" x 23½"	46" x 23½"
Recommended Chassis Cab to Axle Measurement .....	124"	140"

**HYDRAULIC EQUIPMENT**

Packing Cylinder .....	6" Diameter — 60" Stroke
Effective Packing Pressure .....	42,000 P.S.I.
Body Hoist — Twin Telescopic Cylinders	
Pump — 2½" Gear Pump Capacity .....	25 G.P.M. at 1000 R.P.M. 12 P.S.I.
Valves — Pressure Balanced Heavy Duty Bank Type	

**CONSTRUCTION**

PACKER BLADE — 3/16 Steel Reinforced with Heavy Channel, HOPPER FLOOR — 3/16 Steel, BODY FLOOR — 10 Gauge Steel, BODY SIDES & ROOF — 12 Gauge Steel Reinforced with 2" x 2" Formed Angles, SIDE LOADING DOORS — 12 Gauge Steel, Locks in Position at 6" Intervals, REAR DOORS — 10 Gauge Steel, Heavily Braced to Prevent Distortion, FOLDING STEP — Heavy Angle with Expanded Metal Tread, Unfolds to 16½" Wide by 60" Long.

*Compare Baughman Quality . . . Baughman Prices!*



**BAUGHMAN MANUFACTURING CO., INC.**

JERSEYVILLE, ILLINOIS, U.S.A.

ClassicRefuseTrucks.com Library