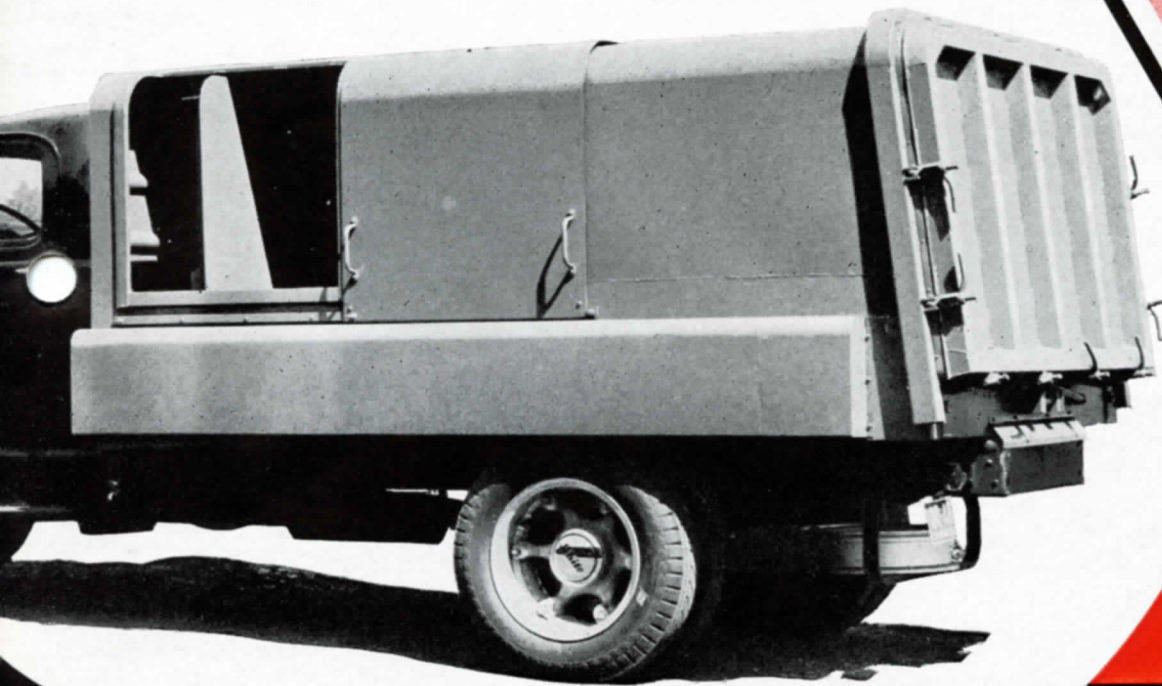
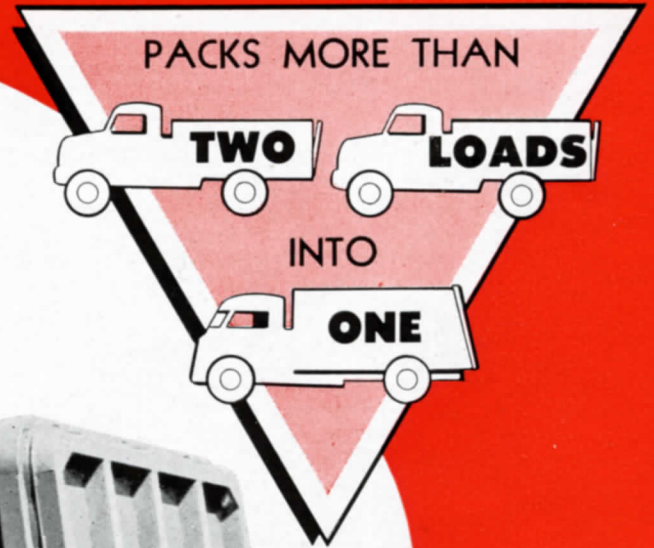


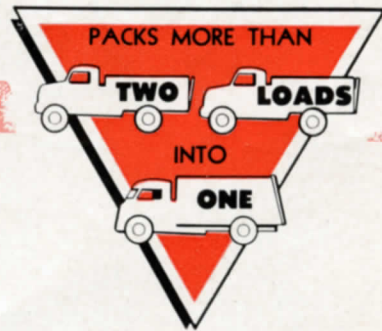
HYDROPAKA



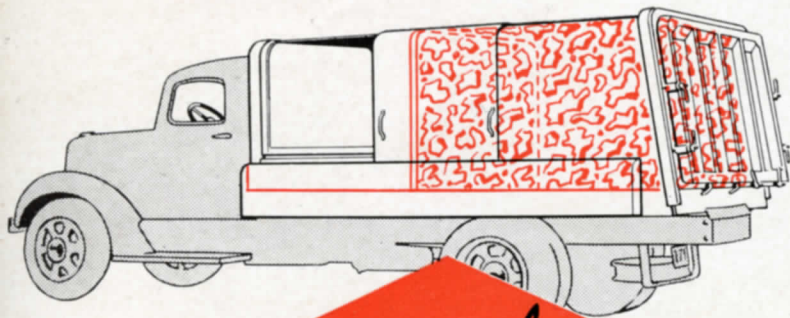
MARION

REFUSE COLLECTION BODY

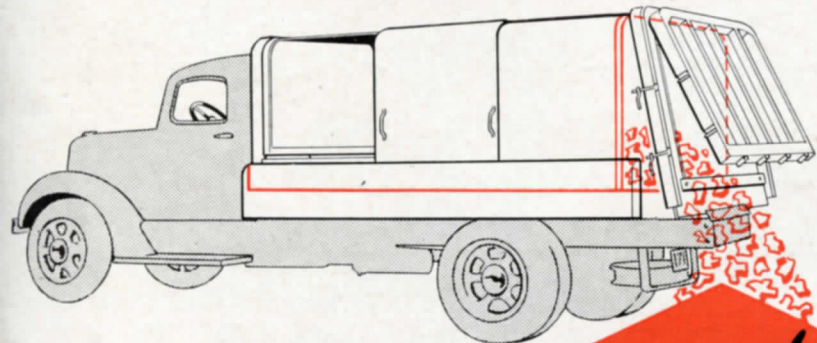
HYDROPAKA



Easy
LOADING



Simple
PACKING



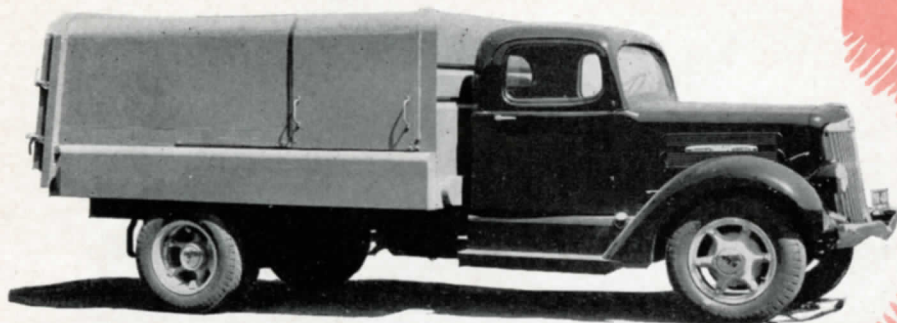
Quick
DUMPING

Loading is through large sliding door openings on each side of the body. They're wide enough to take bulky refuse and rubbish without unnecessary handling. The compacting mechanism need not be operated until the entire space across the width of the body is filled, thus saving operating time. No extra handling, lifting and carrying cumbersome refuse and rubbish from curb to back of truck, to be packed in buckets, trays or troughs. No droppings or litter left on street.

Operating hydraulically, a platen, or packing plate equal to the internal cross dimensions of the body, travels the length of the body. It carries material from the door openings in the front to the rear where it compresses and packs the refuse. This permits the body to be loaded to its full capacity with compressed material. Both the forward and reverse movements of the platen are controlled by a predetermined pressure value and automatic stops.

The door at the rear of the body is unlatched and the platen is moved to the extreme rear. This automatically pushes out the compressed material. There can be no freezing or sticking of the load. No underbody hoist is required and jacking the body back and forth to free and dump loads is unnecessary thereby reducing possibility of bent frames or broken axles. Requirements for dumping headroom are reduced and no extra help is needed to pull refuse out of body.

MEETS EVERY REQUIREMENT



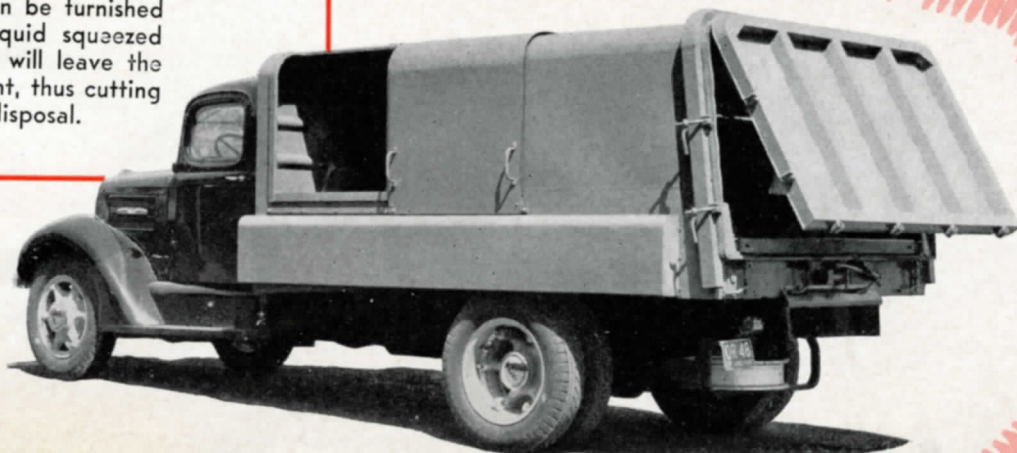
TIME SAVED AND SPACE SAVED ... WILL SAVE YOU DOLLARS!

The Marion Hydropaka is the most efficient, most economical means of handling garbage and rubbish. It provides sanitary, all-enclosed, convenient loading. No space is wasted. Since it accommodates greater loads, fewer trucks are required, sharply reducing the investment in equipment.

S P E C I F I C A T I O N S

	9 YARDS	12 YARDS
Length	132"	156"
Width	90"	90"
Height	46"	46"
Approximate Cab-to-Axle Diameter required	84"	102"
Approximate Loading Height	50"	50"

In Communities where wet garbage is handled, the Hydropaka can be furnished with a sump tank so the liquid squeezed out will drain into it. This will leave the refuse with less liquid content, thus cutting down the fuel used in its disposal.



1 SANITARY, ALL-ENCLOSED BODY

The openings are rubber-sealed, making this unit free from leaking liquids and undesirable odors.

2 ATTRACTIVE APPEARANCE

It's smart-looking, pleasing to the eye. Any city can be proud of having this piece of equipment on its streets.

3 SIMPLE OPERATION

One lever controls the packing and discharge of material. Simplicity of operation, engineering, design and construction results in low-cost operation and maintenance.

4 SAFE, SPEEDY LOADING

Low, direct loading makes the entire procedure easy and trouble-free.

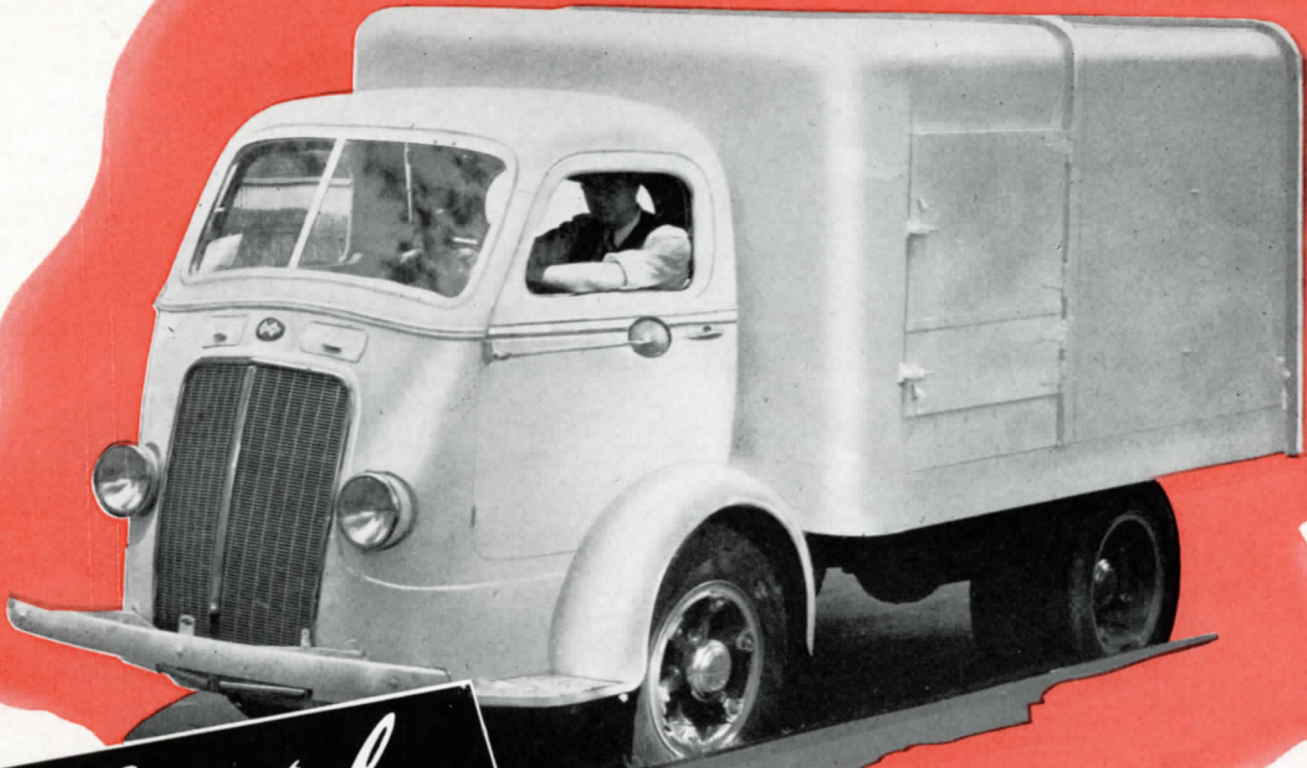
5 FOOLPROOF MECHANISM

Operation is by a single lever. There are no intricate, costly or complex-operating levers, gadgets or hoist to get out of order.

6 LARGER CAPACITY

The packing or compressing action is so positive that the body is loaded completely, increasing the loads carried.

NO UNDERBODY HOIST IS NEEDED
TO DISCHARGE MATERIAL



Special
**HYDROPAKA
DESIGNS**
FOR SPECIAL COLLECTION JOBS

Perhaps your garbage and refuse collection is "different" and presents a problem not fully met by the standard Hydropaka design. In that case, our engineers will gladly work with you to adapt the Hydropaka principle to your particular requirements, and give you the benefit of its proved efficiency and economy.

D I S T R I B U T E D B Y

Classic Refuse Trucks Library; www.classicrefusetrucks.com

THE MARION METAL PRODUCTS COMPANY, MARION, O., U.S.A.

