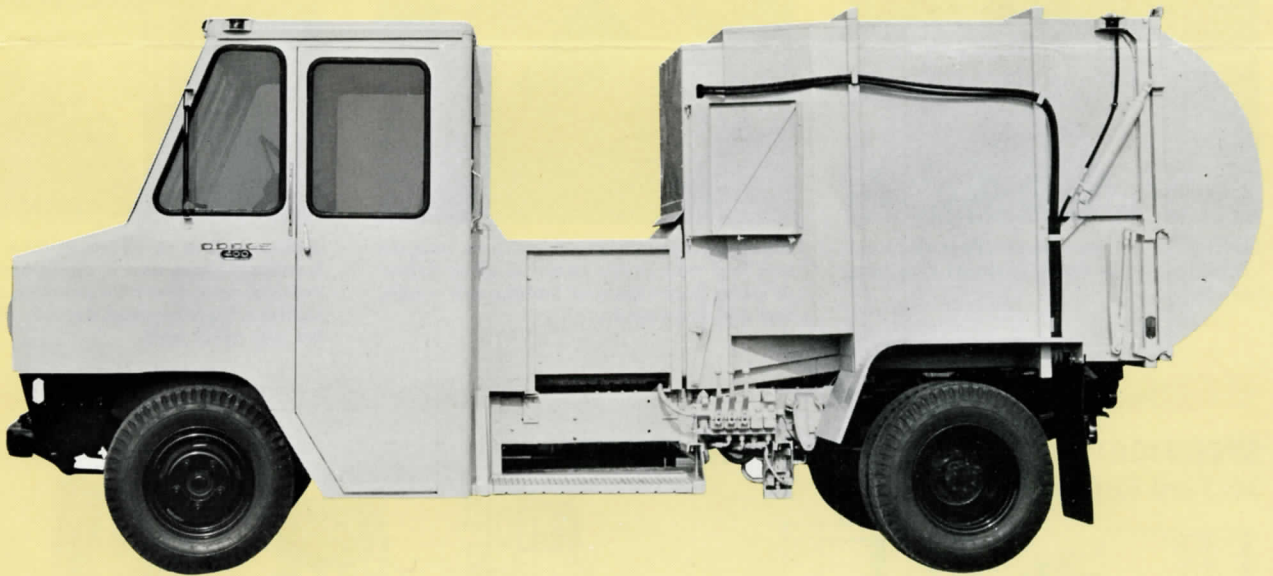




# Smithpac<sup>\*</sup>

## 10 Yard Refuse Packer

*Packs more refuse per load . . . more economically*



- Low initial cost
- Low operating cost
- One-man operation — walk-in cab
- Easy maneuverability — short wheelbase
- Quiet operation for night service
- Unique dual ram compaction — automatic cycling
- Unmatched payload capacity — up to 1,000 lbs. per cubic yard

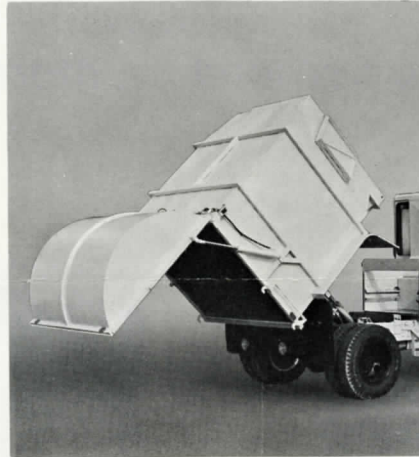
# Smithpac<sup>\*</sup>

The SMITHPAC provides a totally new approach to refuse collection. The patented dual ram packing mechanism is powered by a pump connected to the engine flywheel and cycles continuously to develop compacting ratios as high as 10 to 1. As a result, the SMITHPAC carries

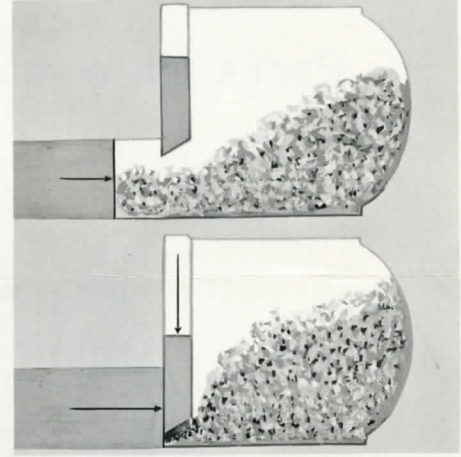
as much refuse as larger, more expensive units — with the added advantage of easy maneuverability in congested areas. Safety switches located in cab and on both sides of hopper instantly stop packing action for maximum protection of operator. Also available in a 5 yard size.



Low profile cab provides excellent all-round visibility — wide swing-in doors give fast, easy access.

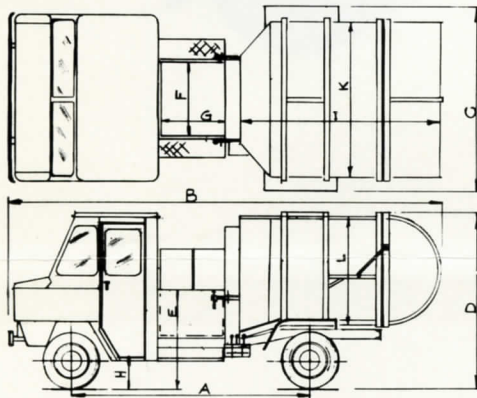


Hydraulically activated locks on tailgate and bed with inside controls allow driver to dump loads without leaving cab — safe, fast and convenient.



Refuse is first compressed into body by the horizontal ram and is again crushed by the vertical ram, every 25 seconds, thereby providing a high payload density of up to 1,000 lbs. per cubic yard.

## SPECIFICATIONS 10 Yard Refuse Packer



SMITHPAC 10 can be mounted on standard GMC, Chevrolet, Ford or Dodge forward control chassis. Ask your distributor for detailed specifications.

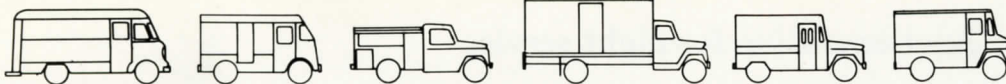
## Hy-Drum-Dump



A hydraulic lift for dumping barrels or containers with capacities to 1,500 lbs. is available.

CHASSIS	GMC P30	Chev P30	Ford P-500	Dodge P-400
G.V.W. — LBS.	14000	14000	15000	16000
A WHEELBASE	133"	133"	137"	137"
B OVERALL LENGTH	231½"	231½"	234¼"	233"
C OVERALL WIDTH	88¾"	88¾"	88¾"	88¾"
D OVERALL HEIGHT	98½"	98½"	100¾"	102½"
MAXIMUM HEIGHT—Dump Position	136"	136"	138¼"	140"
FLOOR SLOPE IN DUMP POSITION	46°	46°	46°	46°
E HOPPER LOADING HT.	50¾"	50¾"	56¾"	58½"
F HOPPER WIDTH	42"	42"	42"	42"
G HOPPER LENGTH	37"	37"	37"	37"
H STEP HEIGHT CAB	13½"	13½"	19½"	21¼"
I BODY LENGTH	99"	99"	99"	99"
K BODY WIDTH	72"	72"	72"	72"
L BODY HEIGHT	60"	60"	60"	60"

Specifications subject to change without notice.



Distributed by:



The Wilson Motor Bodies Limited,  
Howard Road,  
Burlington, Ontario Ph (416) 634-5551