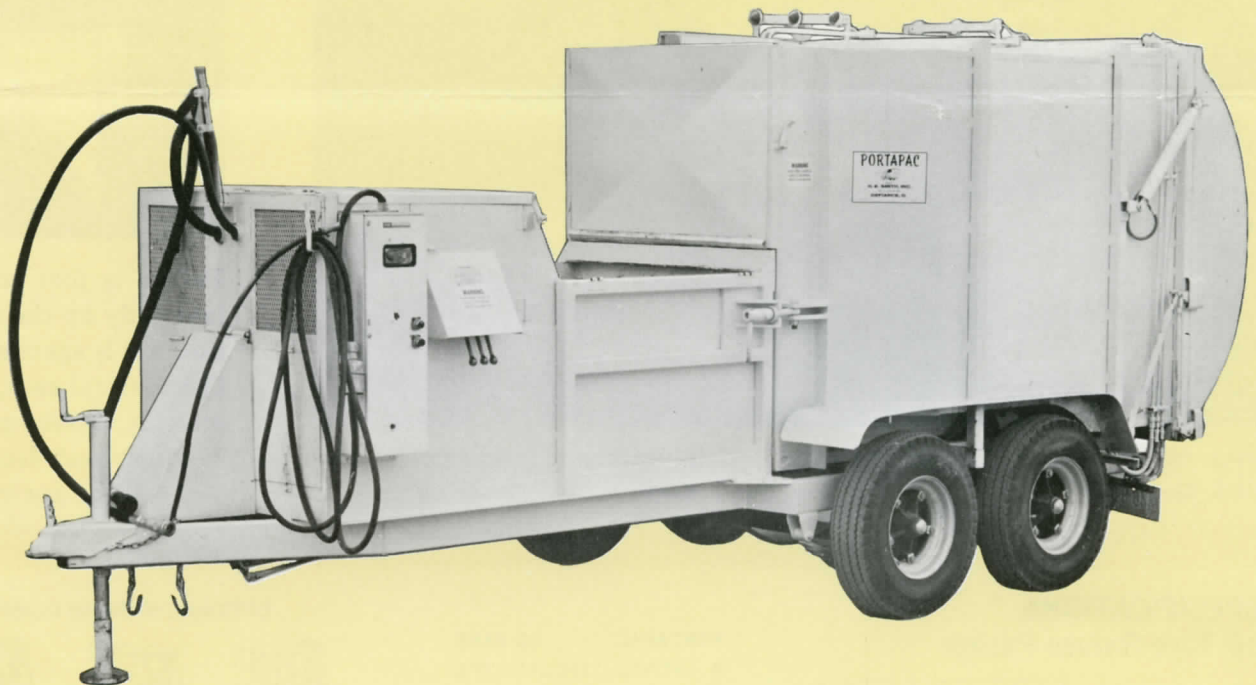




# PORTAPAC\*

10 Yard Refuse Packer

*Packs more refuse per load . . . more economically*



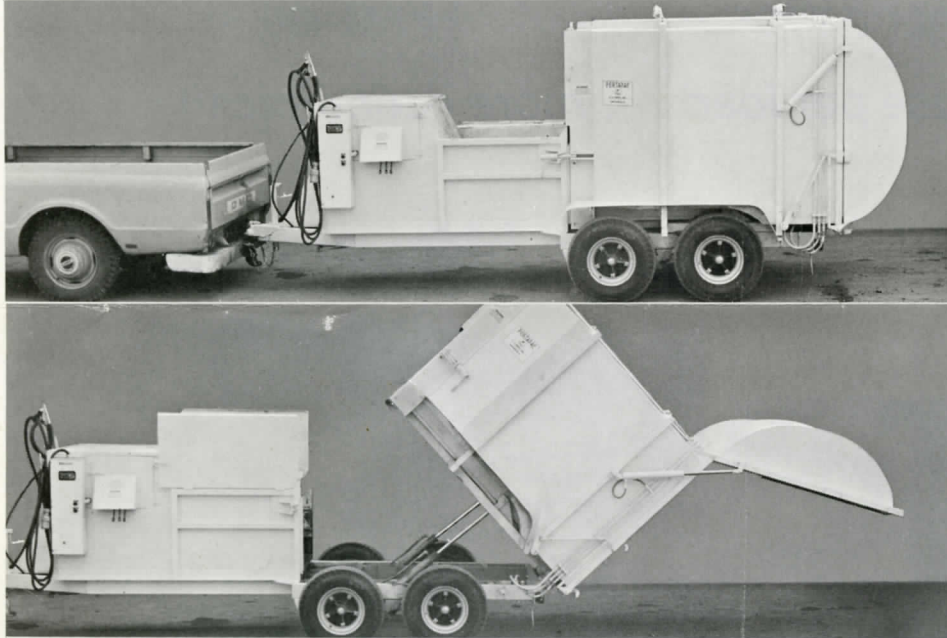
- 14,000 lb. G.V.W.— compact trailer unit
- Electrically powered for stationary operations
- Truck powered for route use
- Unmatched payload capacity—up to 1,000 lbs. per cubic yard
- Easily moved and stored from one location to another
- Unique dual ram compaction — automatic cycling
- Silent, sanitary operation
- Low initial cost
- Ideal for institutions, supermarkets, industry

# PORTAPAC\*

## An advanced concept in refuse collection.

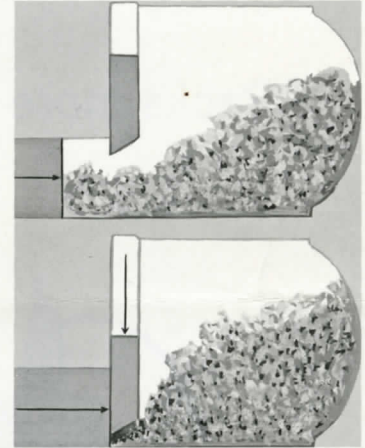
Daily refuse collections mean high expenses, low profits and headaches in scheduling. PORTAPAC does something about it. It eliminates frequent disposal trips, provides compact storage space thanks to its automatic cycling dual hydraulic rams, and

can be towed anywhere with a regular pick-up truck. It can even be operated indoors without danger of fatal fumes. Payload capacities to 10,000 lbs., with densities up to 1,000 lbs. per cubic yard. Refuse is put in the PORTAPAC hopper and start button pressed. Cycling is automatic and completed in less than 20 seconds. Operating period is controlled by you, utilizing an automatic timer. Refuse is completely enclosed. The PORTAPAC is the answer to the cost-profit squeeze.



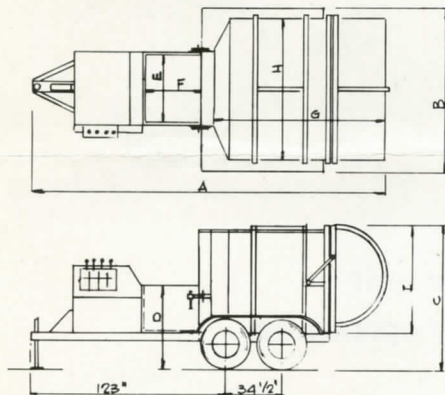
Pick up or deliver with an ordinary pick-up truck.

Dumping is fast, efficient and easy.



Refuse is first compressed into body by the horizontal ram and is again crushed by the vertical ram, every 20 seconds, thereby providing a high payload density of up to 1,000 lbs. per cubic yard.

## SPECIFICATIONS 10 Yard Refuse Packer



PORTAPAC	10 YARD
A	OVERALL LENGTH 227 $\frac{3}{4}$
B	OVERALL WIDTH 85 $\frac{1}{2}$
C	OVERALL HEIGHT 87 $\frac{3}{4}$
D	HOPPER LOADING HEIGHT 52
E	HOPPER WIDTH 42
F	HOPPER LENGTH 40
G	BODY LENGTH 99
H	BODY WIDTH 72
I	BODY HEIGHT 60
	FLOOR SLOPE IN DUMP POSITION 46°
	MAX. HEIGHT IN DUMP POSITION 124 $\frac{1}{2}$

## OPTIONAL HY-DRUM-DUMP



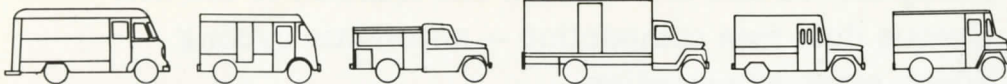
A hydraulic lift for dumping barrels or containers with capacities to 1,500 lbs. is available.

## TRAILER SPECIFICATIONS

- Tandem axles
- 8.00 - 14.5 12-ply tires
- Electric brakes
- Frame is welded structural steel tubing 2 x 5 x 7 ga.
- 2 $\frac{1}{2}$ -inch dia. ball hitch

## ELECTRICAL-HYDRAULIC SPECIFICATIONS

- Motor - 15 h.p. 220-440 volts - 3 phase
- Pump - trailer 17 gal. per min.
- Pump - truck 13 gal. per min.



Distributed by:



The Wilson Motor Bodies Limited,  
Howard Road,  
Burlington, Ontario Ph (416) 634-5551