

WOOD

LOAD CRUSHER



features

New CONTINUOUS, AUTOMATIC CYCLE

Wood Load Crushers are designed and constructed on an entirely new principal that permits continuous packing and loading. Refuse in the hopper is automatically packed and stowed 5-6 times every minute. There is no waiting for the hopper to be emptied. Collections are faster and more economical.

CRUSHES BEFORE STOWING

By crushing the refuse **BEFORE** it is stowed in the body, the Wood Load Crusher carries bigger payloads. More of the route can be collected before the body is filled.

Because of this exclusive pre-crushing action, one unit handles all collections. Large cans, wooden and paper boxes, orange crates and similar bulky materials are easily compressed into a small space-saving area.

LOW LOADING HEIGHT

This new feature does away with the strain of high lifting . . . reduces fatigue . . . improves working conditions and permits faster collections. Too, new safety design eliminates gears, chains or any exposed mechanism that could be dangerous to the men loading.

Available in three sizes—9 cubic yards, 12 cubic yards and 15 cubic yards
—all designed for easy installation on any make truck.

Complete Cycle Hydraulically Operated

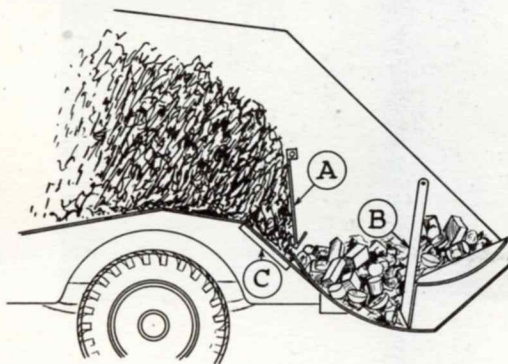
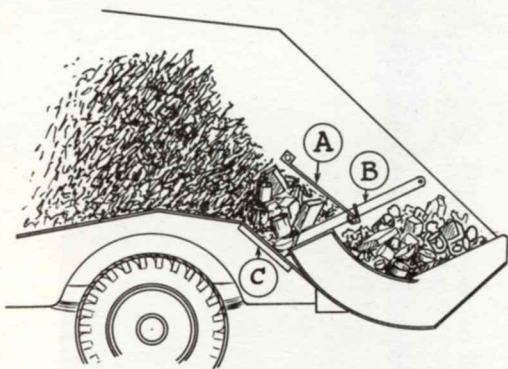
It's SAFE It's SILENT It's DEPENDABLE

How it Operates

At the start of the route, the control lever located at the rear of the body is turned to operating position. This starts the continuous automatic 10-12 second cycle. Refuse is now emptied in the large capacity hopper. Without any attention from the men, the full-width ram "B" swings up pushing the refuse under the open crusher plate "A".

Alternate ram action and crusher plate motion are powered by the same high power, low pressure hydraulic cylinders. This is accomplished by an ingenious toggle design which eliminates gears, chains and racks. Action is simple and dependable with a minimum number of moving parts.

As the ram "B" returns to the rear position, the crusher plate "A" swings downward compressing the refuse against the anvil "C". As more refuse is forced up by the ram, it pushes the compressed batch into the body. These operations continue until the body is filled to capacity with crushed refuse.



See It Work!

To see this amazing new Load Crusher in actual operation, simply contact the WOOD representative in your locality or get in touch with us. A demonstration will be arranged at your convenience.

Modernize Your Present Load Packer

Load Crusher tailgate assemblies are available for replacement on existing Wood Load Packers. Thus, for nominal investment you can convert your Load Packer and gain all the Load Crusher advantages . . . bigger payloads, faster and easier loading, lower collection costs. Load Crusher replacement gates, including all hydraulic equipment, are designed expressly for mounting on Load Packer bodies . . . no cutting, welding or other body alterations are required in making the installation.

WOOD

ENGINEERS AND MANUFACTURERS OF

- Hoists and Bodies—Unlimited Range of Capacities
- Bucket Loaders
- Pole Derricks
- Load Packers
- Front End Loaders
- Power Take-Offs
- Repair Towers
- Snow Plows
- Tailgate Loaders
- Trailerized Dump Units
- Winches
- Wreckers



SALES AND SERVICE COAST TO COAST

Phil Wood Industries, Ltd., WINDSOR, ONTARIO

a CANADIAN company serving CANADIAN industry

ClassicRefuseTrucks.com Library