

THE "AUTOMATED"



AMREP'S Automated Side Loader is a 30 - 36 cubic yard Octagonal body with full pushout ejection. The mounting position of the AMREP automated arm (integral with the body) gives the best weight distributions and highest possible payloads. The 1,000lb. lifting mast has a reach of up to 120" with a 10 second dump cycle. Carts may be dumped and returned from any position without retracting the lift. The self leveling clamps are designed to handle 30 - 105 gallon domestic or European carts (up to 450 gallon optional). The upper and lower dual packer blade, with follower, travels on Chromium based wear guides and skids. The packer design allows for better compaction, container clearance and helps prevent spillage behind the blade. The packer is controlled by the Amrep computer packer system that can be preset to automatically pack after the desired number of containers have been dumped.

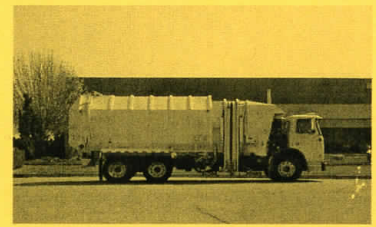
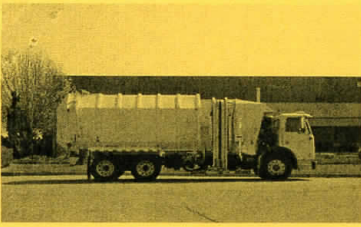
For More Information Call:

(909) 923-0430



1555 S. Cucamonga Ave., Ontario, CA 91761

Fax: (909) 923-2485



AUTOMATED SIDE LOADER UNIT

STANDARD UNIT (MODEL AMOCASLTPO-19 OR 21)

THE FOLLOWING SPECIFICATIONS ARE FOR 30-36 CUBIC YARD AUTOMATED SIDE LOADING REFUSE COMPARTION BODIES TO BE MOUNTED ON CUSTOMER'S TWO, THREE OR FOUR AXLE CAB AND CHASSIS.

BODY AND PACKER DESIGN

THE OCTAGONAL BODY DESIGN WITH HYDRAULIC BUBBLE TYPE REAR DOOR PROVIDES ADDITIONAL BODY STRENGTH AND EASY UNLOADING. THE PACKING MECHANISM FEATURES A LOWER BLADE FOR FULL PUSHOUT EJECTION WITH FULL FOLLOWER PLATE TO PREVENT REFUSE FROM SPILLING BEHIND BLADE. THE UPPER PACKER BLADE IS DRIVEN BY TWO 5 ½" BORE CRISS CROSS MOUNTED CYLINDERS FOR MAXIMUM COMPACTION.

BODY AND PACKER BLADE SPECIFICATIONS

BODY

CONSTRUCTION: BODY POSTS AND ROOF CARLINS – 1/8" X 4" X 2" FORMED STEEL SET ON MAXIMUM 26" CENTERS.
LOWER SIDES – 12 GAUGE HIGH TENSILE STEEL
UPPER SIDES – 12 GAUGE HIGH TENSILE STEEL
ROOF – 12 GAUGE HIGH TENSILE STEEL
FLOOR – 3/16" T-1 "AR" STEEL
LONGITUDINAL – 6" X 2" X 3/16" TUBING
CROSS MEMBERS – 1/8" X 4" X 2" FORMED STEEL

HOPPER

CONSTRUCTION: HOPPER FLOOR – 3/16" T-1 "AR" STEEL
LOWER SIDES – 3/16" HIGH TENSILE STEEL
UPPER SIDES – 12 GAUGE HIGH TENSILE STEEL

HYDRAULIC

REAR DOOR: HYDRAULIC ACTUATED SINGLE REAR STEEL CONVEX DOOR LINED WITH PLYWOOD
DOOR SHEETS – 14 GAUGE HIGH TENSILE STEEL
BRACING – 2" X 2" SQUARE TUBING

PACKER BLADE: DOUBLE BLADE DESIGN WITH BOTH BLADES ON
AUTOMATIC CYCLE. TOP PACKER BLADE IS 22" HIGH X 71"
WIDE. LOWER EJECT BLADE IS 12" HIGH X 72" WIDE. THE TOP
BLADE USES 2 SINGLE STAGE CYLINDERS CROSS MOUNTED 5
1/2" O.D. THE LOWER EJECT BLADE USES 1 THREE STAGE
TELESCOPIC CYLINDER TO EJECT THE LOAD.
PACKER FACE PLATE - 1/4" T-1 STEEL
PACKER SIDES - 3/8" T-1 STEEL
PACKER WIDTH - 71"
PACKER HEIGHT - TOTAL OF 36"
PACKER GUIDES - 4 ON TOP BLADE, 2 ON BOTTOM BLADE
WITH ASTRALLOY WEAR STRIPS

PACKER
FOLLOWER: ATTACHED TO TOP OF PACKER BLADE TO PREVENT REFUSE
FROM COLLECTING IN FRONT AREA OF BODY
FOLLOWER FRAME - 2" X 2" SQUARE TUBING
FOLLOWER COVER - 10 GAUGE HIGH TENSILE STEEL

CANOPY: COVERS AREA BETWEEN BACK OF CAB AND FRONT OF BODY
SIDES AND TOP - 14 GAUGE MILD STEEL

AUTOMATED LOADING MECHANISM

LOADER ARM
CAPACITY: 1,000# CAPACITY

REACH: 108" MINIMUM

DESIGN: RAMP WITH CARRIAGE POWERED BY HYDRUALIC MOTOR
SELF LEVELING CLAMPING MECHANISM

ADAPTABILITY: 30-60-90-100 GALLON FULLY AUTOMATED CONTAINERS
ON STANDARD "GRABBER" ROUND OR RECTANGULAR.
CONTAINERS MAY BE DUMPED FROM ANY ARM POSITION.
90-300 GALLON "GRABBER" AVAILABLE

DECELERATION
VALVE: TO ALLOW MAXIMUM OPERATING SPEEDS WITHOUT DRIVER
CORRECTION.

HYDRAULIC SYSTEM AND COMPONENTS

RESERVIOR: 60 GALLON CAPACITY WITH BREATHER CAP, SHUT OFF VALVE AND TANK DRAIN PLUG. A 20 MICRON RETURN LINE FILTER CARTRIDGE WITH A 20 PSI BY PASS VALVE. VERTICAL BAFFLES, 150 MICRON RESUABLE SUCTION FILTER.

HOSES AND FITTINGS: HEAVY DUTY DOUBLE WIRE BRAIDED AEROQUIP 100R2 SAE HOSE WITH JIC FITTINGS WITH SEAMLSS STEEL TUBING.

CONTROL VALVE: COMMERCIAL A-35 WITH BUILT IN RELIEF VALVE.

POWER SOURCE: FRONT MOUNT DOUBLE PUMP OR P.T.O.

EJECT CYLINDER: (1) – THREE STAGE TELECOPIIC, DOUBLE ACTING, ALL STAGE CHROME.
FIRST STAGE (PACKING) – 6 ½” BORE
SECOND STAGE (EJECTION) – 5” BORE
THIRD STAGE (EJECTION) – 3 ½” BORE
STROKE – 162 ¾”

REAR DOOR CYLINDERS: (2) SINGLE STAGE, DOUBLE ACTING
BORE – 2 ½”
STROKE – 35”
ROD – 1 ½” CHROME

PACKER CYLINDERS: (2) SINGLE STAGE, DOUBLE ACTING ALL STAGE CHROME
BORE – 5 ½”
STROKE – 57”
ROD-

HYDRAULIC OIL: ANTI-WEAR, CORROSION, OXIDATION AND FOAM INHIBITORS
ISO VISCOSITY GRADE – 46
ASI GRAVITY – 31
VISCOSITY – 220 @ 100 DEG. F
FLASH POINT – 430 DEG. F

HYDRAULIC CONTROLS: AIR AND ELECTRIC OPERATED CONTROLS MOUNTED IN CAB TO THE RIGHT AND FORWARD OF OPERATOR AND TO THE LEFT AND FORWARD OF THE OPERATOR. ELECTRIC/AIR AUTO-PACK CONTROLS FOR PACKER BLADE.

MISCELLANEOUS

LIGHTS: STANDARD I.C.C. LIGHTS AND REFLECTORS CONFORMING TO CALIFORNIA STATE VEHICLE CODE. "TRUCK-LITE" TAIL, STOP, BACK UP AND DIRECTIONAL LIGHTS ARE MOUNTED IN THE REAR DOOR.

CLEAN OUT
DOOR: TWO DOORS AT FRONT OF BODY (10" X 31")

MID BODY TURN
SIGNALS: DIRECTIONAL LIGHTS MOUNTED AT MID-POINT OF BODY

SIGN FRAMES: ANGLE IRON MADE TO CUSTOMER SPECIFICATIONS

PAINT: ONE COAT PRIMER AND ONE COAT POLYURETHANE PAINT

MANUALS: TWO OPERATION AND MAINTENANCE MANUALS PER UNIT

ESTIMATED BODY WEIGHT

NOTE: OPTIONS MAY AFFECT TOTAL BODY WEIGHT

ESTIMATED
BODY WEIGHT: 14,500 LBS

OPTIONS

CAMERA: REAR VISION CAMERA SYSTEM

STEERABLE
TAG AXLE: HENDRICKSON PARALIFT STEERABLE AXLE (NO TIRES OR WHEELS INCLUDED)

NON-STEER
TAG AXLE: NUWAY ART505C WITH MERITOR NON-STEER AXLE (NO TIRES OR WHEELS INCLUDED)

WHEELBASE
CHANGES: WHEELBASE CHANGES WITH OR WITHOUT FRAME ADDITIONS

PAINT: BODY STRIPING OR CAB PAINT

BODY
VARIATIONS: BODY SIZE VARIATIONS

REAR DOOR

LIQUID CATCH: MADE WITH LIGHT COMPOSITE MATERIAL, OR STEEL
INSTALLED UNDER REAR DOOR TO PREVENT LIQUID SPILL (IF
SEAL IS NOT FUNCTIONING PROPERLY.)

MINIMUM STEEL SPECIFICATIONS

MILD STEEL: TENSILE STRENGTH – 56,000 PSI
TENSILE YIELD – 36,000 PSI

HIGH TENSILE
STEEL: TENSILE STRENGTH – 80,000 PSI
TENSILE YIELD – 55,000 PSI

T-1 “AR” STEEL: TENSILE STRENGTH – 150,000 PSI
TENSILE YIELD – 100,000 PSI
BRINELL - 363