

BEMARS

A PROFILE OF SATISFACTION

- DIRECT FACTORY SALES
- DIRECT FACTORY SERVICE
- DIRECT FACTORY PARTS
- CALIFORNIA MADE



— SPECIFICATIONS ON REVERSE SIDE —

GENERAL SPECIFICATIONS

ROLL-OFF ASSEMBLY FOR TRUCK OR TRAILER:

Rails:	34" O.D. Standard 3/8 W x 4 x 8 Struc. Tubing
Hoist Cyls:	6" Bore Double Acting
Lengths:	Able to handle 12' to 24' Boxes
Winch:	Tulsa or equal 30,000 Lbs. Safety Factor 2:1
Cable:	5/8 to 3/4
Load Limit:	20 Tons
Trailer Roll-Off:	Maximum length up to 34 ft. equipped with Hydraulic Positioner

OPTIONAL EQUIPMENT:

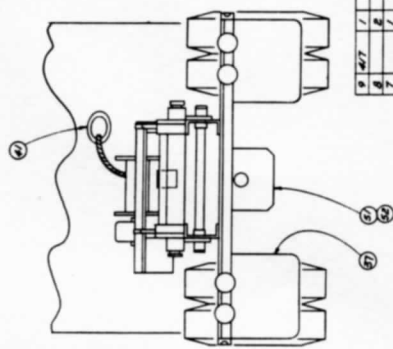
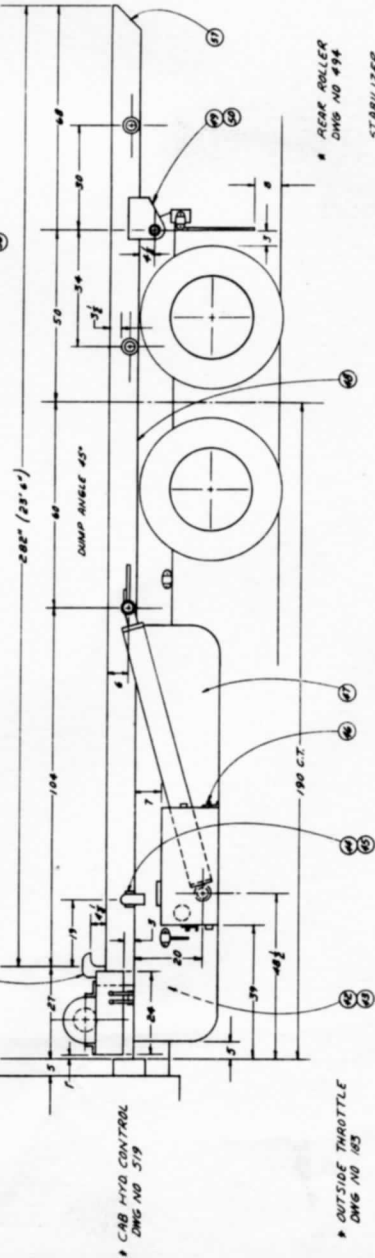
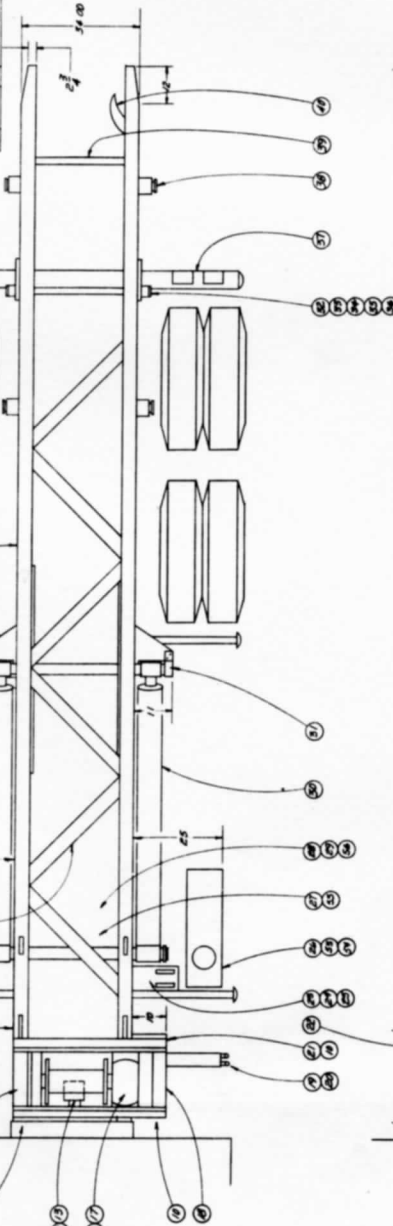
- Mechanical or Hydraulic Stabilizer
- Fenders
- Inside Cab Controls
- Fuel Tank
- Rear Roller
- Tool Box
- Extra Side Rollers
- Tag Axle

ROLL-OFF BOXES:

Closed Container 14' to 22' lengths

57	1	170	CABLE 2570 .81"
58	2	CABLE 1/2" x 1/8"	
59	1	1/2" x 1/8"	
60	1	1/2" x 1/8"	
61	1	1/2" x 1/8"	
62	1	1/2" x 1/8"	
63	1	1/2" x 1/8"	
64	1	1/2" x 1/8"	
65	1	1/2" x 1/8"	
66	1	1/2" x 1/8"	
67	1	1/2" x 1/8"	
68	1	1/2" x 1/8"	
69	1	1/2" x 1/8"	
70	1	1/2" x 1/8"	
71	1	1/2" x 1/8"	
72	1	1/2" x 1/8"	
73	1	1/2" x 1/8"	
74	1	1/2" x 1/8"	
75	1	1/2" x 1/8"	
76	1	1/2" x 1/8"	
77	1	1/2" x 1/8"	
78	1	1/2" x 1/8"	
79	1	1/2" x 1/8"	
80	1	1/2" x 1/8"	
81	1	1/2" x 1/8"	
82	1	1/2" x 1/8"	
83	1	1/2" x 1/8"	
84	1	1/2" x 1/8"	
85	1	1/2" x 1/8"	
86	1	1/2" x 1/8"	
87	1	1/2" x 1/8"	
88	1	1/2" x 1/8"	
89	1	1/2" x 1/8"	
90	1	1/2" x 1/8"	
91	1	1/2" x 1/8"	
92	1	1/2" x 1/8"	
93	1	1/2" x 1/8"	
94	1	1/2" x 1/8"	
95	1	1/2" x 1/8"	
96	1	1/2" x 1/8"	
97	1	1/2" x 1/8"	
98	1	1/2" x 1/8"	
99	1	1/2" x 1/8"	
100	1	1/2" x 1/8"	
101	1	1/2" x 1/8"	
102	1	1/2" x 1/8"	
103	1	1/2" x 1/8"	
104	1	1/2" x 1/8"	
105	1	1/2" x 1/8"	
106	1	1/2" x 1/8"	
107	1	1/2" x 1/8"	
108	1	1/2" x 1/8"	
109	1	1/2" x 1/8"	
110	1	1/2" x 1/8"	
111	1	1/2" x 1/8"	
112	1	1/2" x 1/8"	
113	1	1/2" x 1/8"	
114	1	1/2" x 1/8"	
115	1	1/2" x 1/8"	
116	1	1/2" x 1/8"	
117	1	1/2" x 1/8"	
118	1	1/2" x 1/8"	
119	1	1/2" x 1/8"	
120	1	1/2" x 1/8"	
121	1	1/2" x 1/8"	
122	1	1/2" x 1/8"	
123	1	1/2" x 1/8"	
124	1	1/2" x 1/8"	
125	1	1/2" x 1/8"	
126	1	1/2" x 1/8"	
127	1	1/2" x 1/8"	
128	1	1/2" x 1/8"	
129	1	1/2" x 1/8"	
130	1	1/2" x 1/8"	
131	1	1/2" x 1/8"	
132	1	1/2" x 1/8"	
133	1	1/2" x 1/8"	
134	1	1/2" x 1/8"	
135	1	1/2" x 1/8"	
136	1	1/2" x 1/8"	
137	1	1/2" x 1/8"	
138	1	1/2" x 1/8"	
139	1	1/2" x 1/8"	
140	1	1/2" x 1/8"	
141	1	1/2" x 1/8"	
142	1	1/2" x 1/8"	
143	1	1/2" x 1/8"	
144	1	1/2" x 1/8"	
145	1	1/2" x 1/8"	
146	1	1/2" x 1/8"	
147	1	1/2" x 1/8"	
148	1	1/2" x 1/8"	
149	1	1/2" x 1/8"	
150	1	1/2" x 1/8"	
151	1	1/2" x 1/8"	
152	1	1/2" x 1/8"	
153	1	1/2" x 1/8"	
154	1	1/2" x 1/8"	
155	1	1/2" x 1/8"	
156	1	1/2" x 1/8"	
157	1	1/2" x 1/8"	
158	1	1/2" x 1/8"	
159	1	1/2" x 1/8"	
160	1	1/2" x 1/8"	
161	1	1/2" x 1/8"	
162	1	1/2" x 1/8"	
163	1	1/2" x 1/8"	
164	1	1/2" x 1/8"	
165	1	1/2" x 1/8"	
166	1	1/2" x 1/8"	
167	1	1/2" x 1/8"	
168	1	1/2" x 1/8"	
169	1	1/2" x 1/8"	
170	1	1/2" x 1/8"	
171	1	1/2" x 1/8"	
172	1	1/2" x 1/8"	
173	1	1/2" x 1/8"	
174	1	1/2" x 1/8"	
175	1	1/2" x 1/8"	
176	1	1/2" x 1/8"	
177	1	1/2" x 1/8"	
178	1	1/2" x 1/8"	
179	1	1/2" x 1/8"	
180	1	1/2" x 1/8"	
181	1	1/2" x 1/8"	
182	1	1/2" x 1/8"	
183	1	1/2" x 1/8"	
184	1	1/2" x 1/8"	
185	1	1/2" x 1/8"	
186	1	1/2" x 1/8"	
187	1	1/2" x 1/8"	
188	1	1/2" x 1/8"	
189	1	1/2" x 1/8"	
190	1	1/2" x 1/8"	
191	1	1/2" x 1/8"	
192	1	1/2" x 1/8"	
193	1	1/2" x 1/8"	
194	1	1/2" x 1/8"	
195	1	1/2" x 1/8"	
196	1	1/2" x 1/8"	
197	1	1/2" x 1/8"	
198	1	1/2" x 1/8"	
199	1	1/2" x 1/8"	
200	1	1/2" x 1/8"	

57	1	170	CABLE 2570 .81"
58	2	CABLE 1/2" x 1/8"	
59	1	1/2" x 1/8"	
60	1	1/2" x 1/8"	
61	1	1/2" x 1/8"	
62	1	1/2" x 1/8"	
63	1	1/2" x 1/8"	
64	1	1/2" x 1/8"	
65	1	1/2" x 1/8"	
66	1	1/2" x 1/8"	
67	1	1/2" x 1/8"	
68	1	1/2" x 1/8"	
69	1	1/2" x 1/8"	
70	1	1/2" x 1/8"	
71	1	1/2" x 1/8"	
72	1	1/2" x 1/8"	
73	1	1/2" x 1/8"	
74	1	1/2" x 1/8"	
75	1	1/2" x 1/8"	
76	1	1/2" x 1/8"	
77	1	1/2" x 1/8"	
78	1	1/2" x 1/8"	
79	1	1/2" x 1/8"	
80	1	1/2" x 1/8"	
81	1	1/2" x 1/8"	
82	1	1/2" x 1/8"	
83	1	1/2" x 1/8"	
84	1	1/2" x 1/8"	
85	1	1/2" x 1/8"	
86	1	1/2" x 1/8"	
87	1	1/2" x 1/8"	
88	1	1/2" x 1/8"	
89	1	1/2" x 1/8"	
90	1	1/2" x 1/8"	
91	1	1/2" x 1/8"	
92	1	1/2" x 1/8"	
93	1	1/2" x 1/8"	
94	1	1/2" x 1/8"	
95	1	1/2" x 1/8"	
96	1	1/2" x 1/8"	
97	1	1/2" x 1/8"	
98	1	1/2" x 1/8"	
99	1	1/2" x 1/8"	
100	1	1/2" x 1/8"	
101	1	1/2" x 1/8"	
102	1	1/2" x 1/8"	
103	1	1/2" x 1/8"	
104	1	1/2" x 1/8"	
105	1	1/2" x 1/8"	
106	1	1/2" x 1/8"	
107	1	1/2" x 1/8"	
108	1	1/2" x 1/8"	
109	1	1/2" x 1/8"	
110	1	1/2" x 1/8"	
111	1	1/2" x 1/8"	
112	1	1/2" x 1/8"	
113	1	1/2" x 1/8"	
114	1	1/2" x 1/8"	
115	1	1/2" x 1/8"	
116	1	1/2" x 1/8"	
117	1	1/2" x 1/8"	
118	1	1/2" x 1/8"	
119	1	1/2" x 1/8"	
120	1	1/2" x 1/8"	
121	1	1/2" x 1/8"	
122	1	1/2" x 1/8"	
123	1	1/2" x 1/8"	
124	1	1/2" x 1/8"	
125	1	1/2" x 1/8"	
126	1	1/2" x 1/8"	
127	1	1/2" x 1/8"	
128	1	1/2" x 1/8"	
129	1	1/2" x 1/8"	
130	1	1/2" x 1/8"	
131	1	1/2" x 1/8"	
132	1	1/2" x 1/8"	
133	1	1/2" x 1/8"	
134	1	1/2" x 1/8"	
135	1	1/2" x 1/8"	
136	1	1/2" x 1/8"	
137	1	1/2" x 1/8"	
138	1	1/2" x 1/8"	
139	1	1/2" x 1/8"	
140	1	1/2" x 1/8"	
141	1	1/2" x 1/8"	
142	1	1/2" x 1/8"	
143	1	1/2" x 1/8"	
144	1	1/2" x 1/8"	
145	1	1/2" x 1/8"	
146	1	1/2" x 1/8"	
147	1	1/2" x 1/8"	
148	1	1/2" x 1/8"	
149	1	1/2" x 1/8"	
150	1	1/2" x 1/8"	
151	1	1/2" x 1/8"	
152	1	1/2" x 1/8"	
153	1	1/2" x 1/8"	
154	1	1/2" x 1/8"	
155	1	1/2" x 1/8"	
156	1	1/2" x 1/8"	
157	1	1/2" x 1/8"	
158	1	1/2" x 1/8"	
159	1	1/2" x 1/8"	
160	1	1/2" x 1/8"	
161	1	1/2" x 1/8"	
162	1	1/2" x 1/8"	
163	1	1/2" x 1/8"	
164	1	1/2" x 1/8"	
165	1	1/2" x 1/8"	
166	1	1/2" x 1/8"	
167	1	1/2" x 1/8"	
168	1	1/2" x 1/8"	
169	1	1/2" x 1/8"	
170	1	1/2" x 1/8"	
171	1	1/2" x 1/8"	
172	1	1/2" x 1/8"	
173	1	1/2" x 1/8"	
174	1	1/2" x 1/8"	
175	1	1/2" x 1/8"	
176	1	1/2" x 1/8"	
177	1	1/2" x 1/8"	
178	1	1/2" x 1/8"	
179	1	1/2" x 1/8"	
180	1	1/2" x 1/8"	
181	1	1/2" x 1/8"	
182	1	1/2" x 1/8"	
183	1	1/2" x 1/8"	
184	1	1/2" x 1/8"	
185	1	1/2" x 1/8"	
186	1	1/2" x 1/8"	
187	1	1/2" x 1/8"	
188	1	1/2" x 1/8"	
189	1	1/2" x 1/8"	
190	1	1/2" x 1/8"	
191	1	1/2" x 1/8"	
192	1	1/2" x 1/8"	
193	1	1/2" x 1/8"	
194	1	1/2" x 1/8"	
195	1	1/2" x 1/8"	
196	1	1/2" x 1/8"	
197	1	1/2" x 1/8"	
198	1	1/2" x 1/8"	
199	1	1/2" x 1/8"	
200	1	1/2" x 1/8"	



REAR WINCH MOUNT
SEE DWG 12-585

• TOOL BOX

• REAR ROLLER
DWG NO 494

• STABILIZER
DWG NO 279

• CAB HYD CONTROL
DWG NO 579

• OUTSIDE THROTTLE
DWG NO 105

• OPTIONAL EQUIPMENT

1	WINCH ENGINE
2	ROLLERS
3	DRUM
4	WHEEL
5	AXLE
6	SPRINGS
7	SHOCKS
8	STEERING
9	WHEELS
10	AXLES
11	SPRINGS
12	SHOCKS
13	STEERING
14	WHEELS
15	AXLES
16	SPRINGS
17	SHOCKS
18	STEERING
19	WHEELS
20	AXLES
21	SPRINGS
22	SHOCKS
23	STEERING
24	WHEELS
25	AXLES
26	SPRINGS
27	SHOCKS
28	STEERING
29	WHEELS
30	AXLES
31	SPRINGS
32	SHOCKS
33	STEERING
34	WHEELS
35	AXLES
36	SPRINGS
37	SHOCKS
38	STEERING
39	WHEELS
40	AXLES
41	SPRINGS
42	SHOCKS
43	STEERING
44	WHEELS
45	AXLES
46	SPRINGS
47	SHOCKS
48	STEERING
49	WHEELS
50	AXLES
51	SPRINGS
52	SHOCKS
53	STEERING
54	WHEELS
55	AXLES
56	SPRINGS
57	SHOCKS
58	STEERING
59	WHEELS
60	AXLES
61	SPRINGS
62	SHOCKS
63	STEERING
64	WHEELS
65	AXLES
66	SPRINGS
67	SHOCKS
68	STEERING
69	WHEELS
70	AXLES
71	SPRINGS
72	SHOCKS
73	STEERING
74	WHEELS
75	AXLES
76	SPRINGS
77	SHOCKS
78	STEERING
79	WHEELS
80	AXLES
81	SPRINGS
82	SHOCKS
83	STEERING
84	WHEELS
85	AXLES
86	SPRINGS
87	SHOCKS
88	STEERING
89	WHEELS
90	AXLES
91	SPRINGS
92	SHOCKS
93	STEERING
94	WHEELS
95	AXLES
96	SPRINGS
97	SHOCKS
98	STEERING
99	WHEELS
100	AXLES

STANDARD ROLL-OFF WINCH INC.
SCALE 1/8" = 1'-0"
DWG NO 12-585
REV 11