

BMV 5500

HORIZONTAL DISCHARGE REFUSE COLLECTION VEHICLES



R Bradley
Municipal
Vehicles Limited

BMV 5500 FOR EFFICIENT

All British built, the 5500 complements and completes the range of refuse bodies manufactured at Clay Cross. Because of its quality, realistic price and reasonable delivery it will become the operators natural choice.

The operation of the 5500 is unique, simple and effective. The body is charged with refuse by the continuous 180° sweep action of the rammer in the hopper. Within the body is a scientifically shaped ejector plate which is moved back as the refuse is compressed against it by the continuous ramming. Compaction of average household refuse into the

17 cu. yds body is about 4 to 1 giving a compacted volume of up to 65 cu. yds.

Discharge is fast and easy with an average discharge time of about 20 seconds. Only two levers are operated – one lever controls the raising and lowering of the rear door and hopper with automatic locking and unlocking. The other lever operates the ejector plate. Although no seals are used, spillage between the rear door structure and the body is not possible.

One of the great advantages of this vehicle is economy. There are very few moving parts and this not only ensures

simplicity in operation, it also means that maintenance costs are very low. Low energy absorption also means low running costs.

This unit has been designed with the health and safety act in mind. The compression mechanism can only be operated by the refuse operator. Whatever mode the rear of the vehicle is in it will be indicated by illuminated signals, panel mounted.

More and more local authorities are changing to the B.M.V. range of vehicles. Ask a user what he thinks about B.M.V. and then ring us for a demonstration.

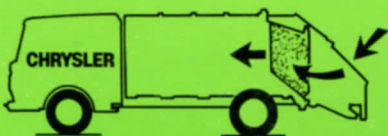
STAR FEATURES

- 1 Safety bar full hopper length.
- 2 Driver cannot operate paddle from cab.
- 3 Full visual illuminated information control panel.
- 4 Operational cab control or dual control for hopper elevation and ejection.
- 5 Automatic tailgate lock, no screws, no clamps.
- 6 Automatic hopper cleaning when tipped.
- 7 17 cu. yds. free air space, all steel body.
- 8 High speed continuous loading 4.5 cu. yd. per minute.
- 9 High speed ejection 20 secs.
- 10 Low pressure hydraulics 1550 p.s.i.
- 11 Low maintenance, two short stroke double acting compression rams only, totally enclosed.
- 12 Automatic polythene or paper sack ripping eliminates air cushioning.
- 13 High economy and low running costs. 60-70% of refuse loaded at 1000 r.p.m. engine speed.
- 14 Hydraulic over rev device.
- 15 Solenoid operated dump valve protects all systems.
- 16 Extremely quiet in operation.

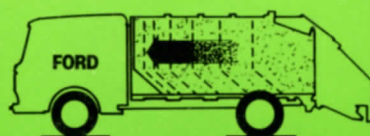


LOADING AND DISCHARGE CYCLE

The BMV 5500 is a continuous loading machine. At the start of the loading cycle the ejector plate is positioned at the rear of the body.



As refuse is emptied into the hopper the rammer packs it against the ejector plate, which moves freely towards the front end of the body.



The steady 180° sweep action of the rammer ensures efficient compaction.



RELIABILITY....



This highly flexible body can be fitted to the majority of perfectly standard chassis cabs either with or without a 6-7 man crew cab.

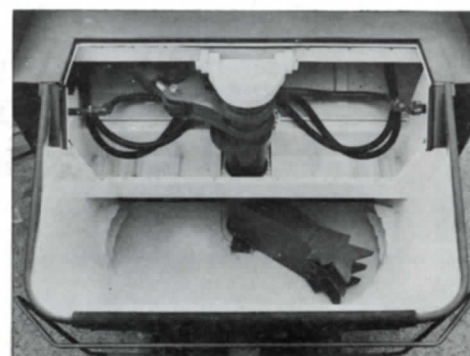


5500S. The 5500S has been designed with the growth operator in mind. It is a fully dual purpose refuse machine and will handle 1 1/3 cu. yds. rectangular bins with complete safety and simplicity by single lever operation. The bin lift equipment does not interfere with normal domestic collection.

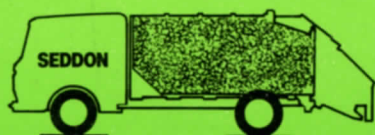
AND HIGH PERFORMANCE



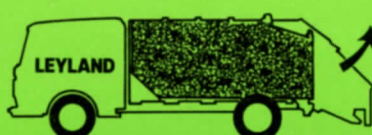
The 5500 is ideally suited for those operators who prefer to operate legally below the 16 Ton G.V.W. The body can be matched to any popular chassis cab from 13 - 15 Ton G.V.W. Undoubtedly its performance, low maintenance, low running costs and built in safety features will be a strong consideration when Authorities are selecting vehicles. It is one of the few refuse bodies that is British made. It is constructed entirely at our Clay Cross Plant.



There is no air cushioning in the body during loading. Paper and polythene bags are automatically ripped.



When loading is complete the refuse is uniformly compacted up 65 cu. yds. in a 17 cu. yds. body.



The rear door structure is lifted and the ejector plate is actuated to empty the body in 20 seconds. BMV 5500 completes its loading and discharge cycles, quickly, quietly and economically.

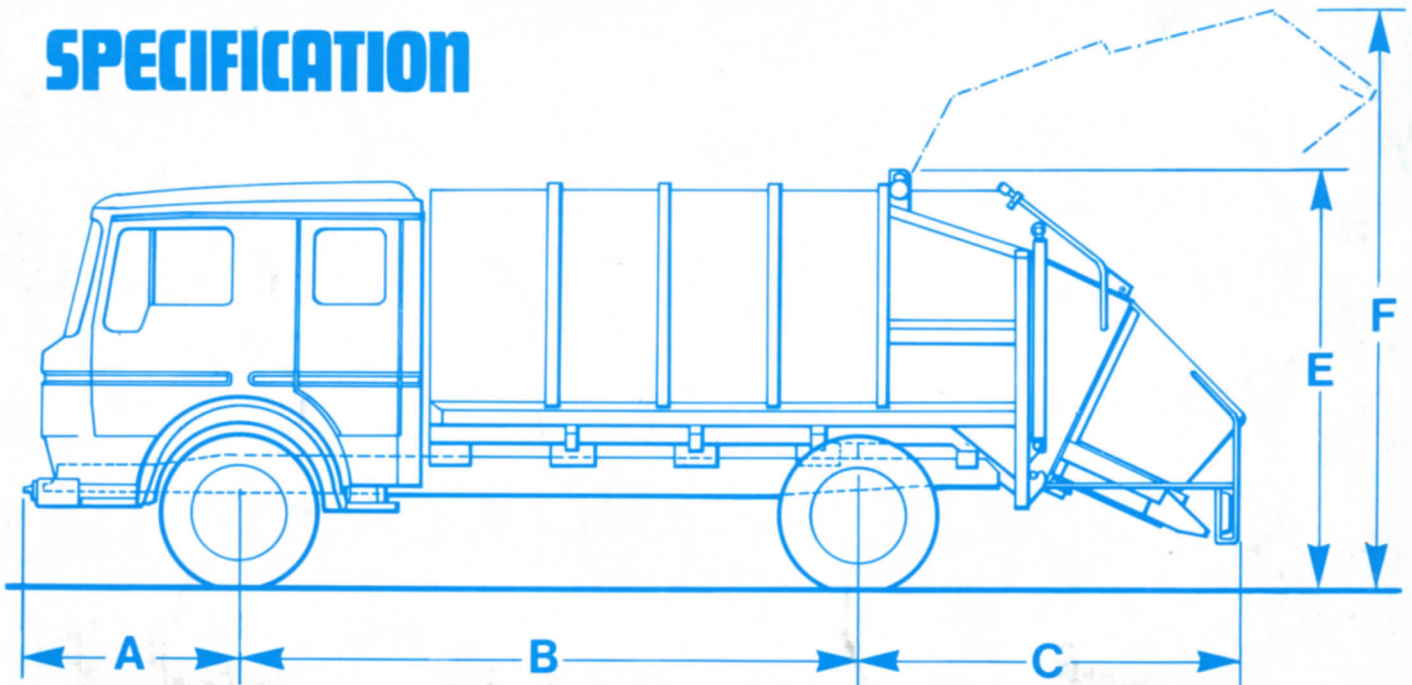


BMV 5500

The Company's policy is one of continuous product improvement, specifications therefore are liable to alteration at any time.

Manufactured under licence from Société Industrielle de Transports Automobiles (S.I.T.A.).

SPECIFICATION



Front Overhang	A	1.4 m.	4' 7"
Wheelbase	B	4.03 m.	13' 3"
Rear Overhang	C	2.6 m.	8' 8"
Overall Length	A+B+C	8.03 m.	26' 4"
Overall Width		2.5 m.	8' 0"
Overall Height	E	2.75 m.	9' 0"
Overall Height—Hopper Raised	F	3.00 m.	9' 10"
Tare Weight		7.5 tonnes	7 tons 7 cwt. 2 qr.
Body Capacity		46/50 cu. m.	60/65 cu. yds.
Charge Rate		3.5 cu. m./minute	4½ cu. yds./minute
Rammer Force		7.62 tonnes	7.5 tons
Ejection Time		20 seconds	20 seconds



**R Bradley
Municipal
Vehicles Limited**

Derby Road, Clay Cross,
Chesterfield, Derbyshire
Telephone: 0246 863456
Telex: 547021

A member of R. Bradley Motor Holdings Limited