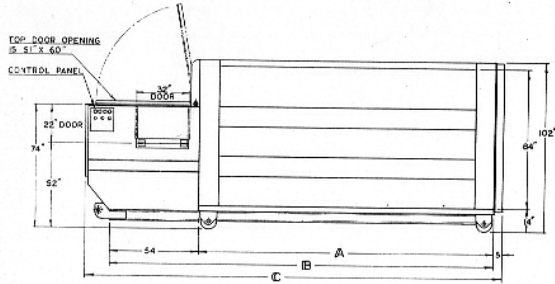
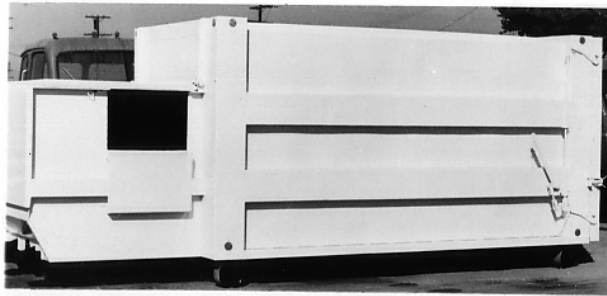
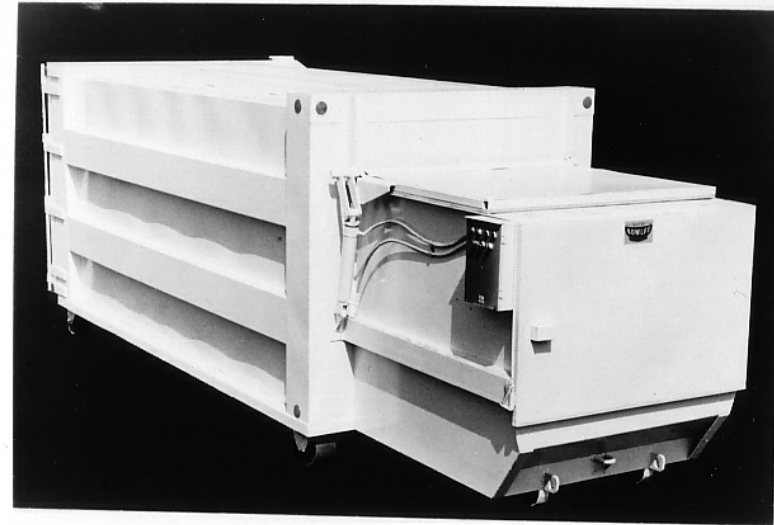


PORTABLE ROLL-OFF PACKING CONTAINER

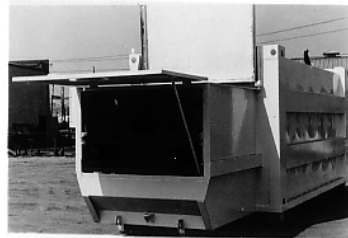
USED WITH TILTING ROLL-OFF HOIST FRAME ON TRUCK CHASSIS



SIZE	18 Ft.	20 Ft.
A	12'-0"	14'-0"
B	16'-6"	18'-6"
C	18'-3"	20'-3"
CAP.	20 Yd.	25 Yd.

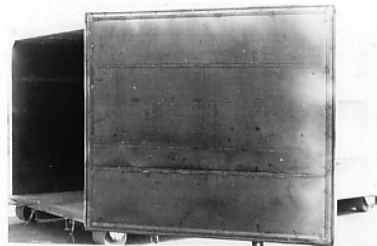
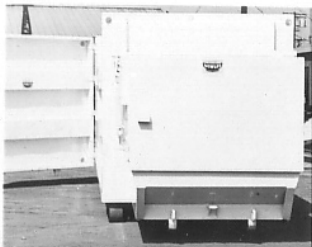


PITCH-IN DOOR AVAILABLE



HOPPER COVER AND OPENING

POWER UNIT



VIEWS OF REAR DOOR EQUIPMENT

PACKING CONTAINER FEATURES

- Hopper opening at top 51" X 60"
- Hopper opening at blade 45" X 60"
- Compaction blade is 30" X 60"
- Volume of compaction chamber 1.75 Cu.Yd.
- Hopper capacity above compaction chamber 1.8 Cu.Yd.
- Motor 10 HP, 220 or 440, 3 phase standard
- Two 5" hydraulic cylinders compact waste
- One 2-7/8" hydraulic cylinder operates hopper cover.
- Compactor operates in a continuous automatic cycle by electric controls.
- Fabrication includes water and insect tight construction with rubber sealed doors.

ROLL-OFF SYSTEMS

HOME OFFICE AND PLANT
S. VINCEN BOWLES, INC.
 12039 BRANFORD STREET
 SUN VALLEY, CALIFORNIA 91352
 PHONE 899-9511 AREA 213

DISTRIBUTOR
SUNNYVALE TRUCK EQUIP. CO.
 755 NORTH MATHILDA AVE.
 SUNNYVALE, CALIFORNIA 94086
 PHONE 739-5475 AREA 408

DETACHABLE FRONT LOADING REFUSE PACKER BODY

USED WITH TILTING ROLL-OFF HOIST FRAME ON TRUCK CHASSIS



DETACHABLE BODY LOADING SEQUENCE.



DETACHABLE BODY SPECIFICATIONS

Size and Capacity-----	18 Ft. - 34 Yd., 20 Ft. - 38 Yd., 22 Ft. - 42 Yd.
Front Loader-----	Over door type, 4000 or 6000 Lb. capacity.
Compaction Blade-----	Push or pull type available.
Hopper cover-----	Hydraulic or chain operated and various styles.
Operation-----	Hydraulic lever controls are in cab (Additional outside controls are available.)
Inter-System Hydraulics-----	Two Quick disconnect couplings at rear serve detachable body hydraulic systems.

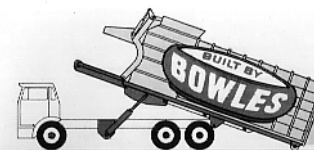
TILTING ROLL-OFF HOIST FRAME SPECIFICATIONS

Sizes-----	From 16 Ft. to 22 Ft.
Winch Capacities-----	30,000 Lb. standard size. (Optional units from 12,000 to 60,000 Lbs.)
Body Locking Devices-----	Automatic roller locks at front and automatic clamps at rear securely hold body.
Options-----	Stabilizing Roller-Jack and fenders.

(SEE BOWLES ROLL-OFF SYSTEM BROCHURE FOR MORE DETAILS)



FRONT LOADER OPERATION FOR DUMPING CONTAINERS.



ROLL-OFF SYSTEMS

HOME OFFICE AND PLANT
S. VINCENT BOWLES, INC.
 12039 BRANFORD STREET
 SUN VALLEY, CALIFORNIA 91352
 PHONE 899-9511 AREA 213

DISTRIBUTOR
SUNNYVALE TRUCK EQUIP. CO.
 755 NORTH MATHILDA AVE.
 SUNNYVALE, CALIFORNIA 94086
 PHONE 739-5475 AREA 408