

*High Volume Refuse, Trash and Waste  
Disposal Handling Costs DROP . . .*

6-2-67

**WHEN YOU BEGIN OPERATING AN APPLICATION-ENGINEERED**

**BOWLES CENTRAL TRANSFER STATION**

**USE-PROVEN, SINCE 1959 BY...**

**MUNICIPALITIES**

**INDUSTRIAL PLANTS**

**DISPOSAL CONTRACTORS**



**From New York to California to Hawaii**

QUALITY BUILT BY

**BOWLES**

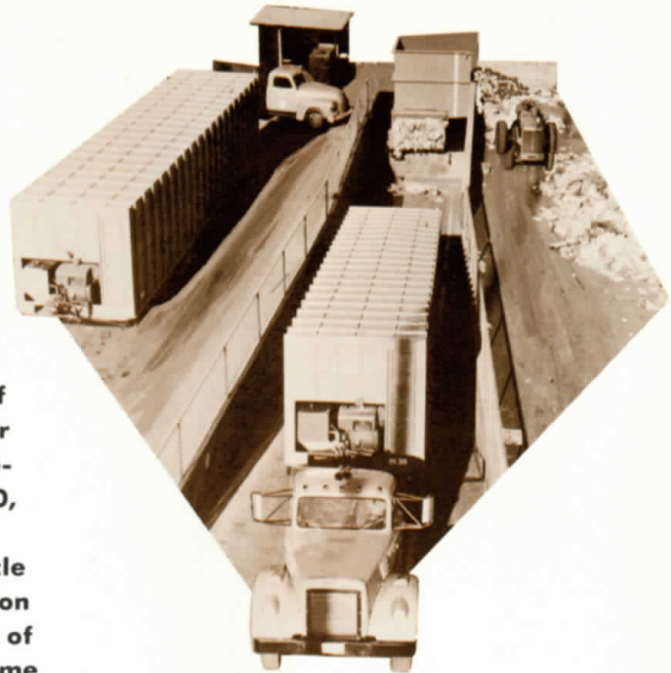
# FACTS TO CONSIDER

The Bowles Central Transfer Station is not new. It was Originated, Engineered, Manufactured, and Installed in 1959, by S. VINCEN BOWLES, INC. An encompassing U.S. Patent has since been awarded.

BOWLES Transfer Station Equipment is simple in design, safety, operation, and general maintenance. Yet each of the "Standard" and "Custom" units have been ruggedly built to reliably handle the volumes of refuse, rubbish, and general waste materials received for disposal-compaction and transport to the final dumpsite.

Earliest Users still report satisfaction with the performance of their BOWLES Transfer Station Equipment...and enthusiasm over the cost-savings they continue to record! (One early User has reported first-year cost-reduction savings of nearly \$90,000.00, compared to their former costs of incineration!)

Another User's Representative reported, in a published article which appeared in a 1961 issue of a recognized trade publication...his City saved \$60,000.00 per year...following installation of their BOWLES Central Transfer Station! Perhaps you have a volume refuse and waste handling problem that we can help solve...



## HERE'S HOW THE APPLICATION-ENGINEERED BOWLES TRANSFER STATION REDUCES COSTS:

Vehicles and equipment of all types, sizes, and makes, deliver and unload refuse and waste materials in the Receiving Area of the BOWLES Central Transfer Station, resulting in their immediate availability for return to collection work. The bulk waste is transfer-compacted into a large transport vehicle, (or Container), by the powerful BOWLES hydraulic Transfer Packer machine, which is the heart of the Transfer Station.

Actual operation photos below, illustrate the sequence of material flow from collection truck discharge at the Receiving Area, to charging hopper of the Transfer Packer machine with Transfer Trailer in loading position, to discharge at the distant dumpsite.

1. Refuse delivered to BOWLES Transfer Station, is discharged in Receiving Area, which may be outdoors in dry climate; indoors in 4-Season areas.
2. Scoop-type tractor feeds refuse into loading hopper of BOWLES Transfer Packer machine, for injection into Transfer Trailer.
3. BOWLES Transfer Trailers shown are 40 ft. and 35 ft. series. Compaction-loaded to 20-plus tons "legal" payloads, approx. 25-30 miles, released from Packer, departs...





**4.** At landfill dumpsite, discharge door is opened by the driver. Side hinged rear door, standard. Top hinged, hydraulic powered, at optional additional charge.

**5.** Transfer-packed load is quickly and easily ejected by hydraulic powered blade travelling body length. Simple lever controls are located at front, for efficiency and safety.

**6.** BOWLES Transfer Trailers, and Transfer Series Roll-Off Bodies unload "clean" in approx. 18-25 minutes, Users report! Power to hydraulic system by auxiliary gas engine, on trailer.



**RECAPPING A FEW USER BENEFITS CONTRIBUTING TO SIGNIFICANT COST-REDUCTION:**

- Parade of collection type trucks, and crews "deadheading" to distant dumpsite, replaced by 1 driver, and Transfer Trailer. Driver operates scoop-tractor between trips.
- Sharp reduction in fleet fuel, and maintenance costs.
- Fewer route collection trucks required to efficiently cover full time collection routes, with short runs to Transfer Station, unload, and return to routes.
- Fewer trucks in dumpsite transit reduces exposure to highway overweight penalties.
- Elimination of costly incinerator installation, operation, maintenance, residue disposal.
- Eliminates unsightly, air-polluting smoke, fumes, and fly-ash from incineration!
- Sharply reduces exposure to personnel injuries sustained at dumpsite, and related claim costs, since only the Transfer Trailer driver enters the dump area.
- Minimum maintenance required on BOWLES Transfer Station Equipment. Components are standard brands, readily available over-the-counter in most localities, or fast air express from factory. Can be serviced, or repaired, by relatively unskilled labor.
- Lower initial investment in Transfer Station facilities, regardless of climate area requirements!

BOWLES Central Transfer Station Equipment includes the Transfer Packer machine, available in four (4) Models to meet particular volume handling requirements. Also, the application-engineered Transfer Transport Unit, type-and-size selections to handle the particular refuse and waste materials.

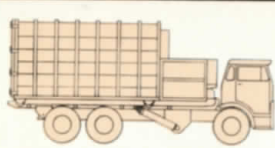
**NOTE:** As engineered equipment builders, we do not engage in contracting building construction, or installation of other facility improvements, including property alterations. Necessary Transfer Station Equipment installation details are provided, however.

A qualified representative of S. VINCEN BOWLES, INC., will welcome the opportunity to discuss your refuse disposal situation with you, in professional confidence, and assist in evaluation of BOWLES-engineered equipment to lower your handling costs.

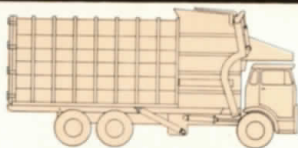
**Why not call, or write to us today at the location nearest your area, to discuss your interest in Central Transfer Station Equipment and/or any of the application-engineered BOWLES cost-reduction equipment illustrated below.**

**QUALITY BUILT BY**

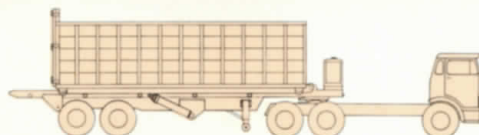
**BOWLES**



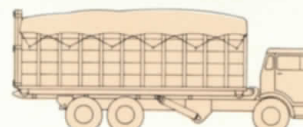
FRONT LOADING COLLECTION AND PACKING BODY



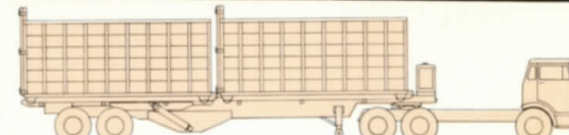
SELF-CONTAINED PACKING CONTAINER ON ROLL-OFF TRUCK



OPEN CONTAINER ON ROLL-OFF TRUCK



CONTAINER ON 26-FOOT ROLL-OFF, SEMI-TRAILER



TWO CONTAINER ON 40-FOOT DOUBLE ROLL-OFF SEMI-TRAILER

**MAIN OFFICE:**

**S. VINCEN BOWLES, INC.**  
12039 Branford Street  
Sun Valley, California 91352  
Telephone: (213) 899-9511

**EASTERN DIVISION OFFICE:**

**S. VINCEN BOWLES, INC.**  
1714 Capri Lane  
Richmond, Indiana 47374  
Telephone: (317) 962-1482

**LOCALLY REPRESENTED BY:**

ClassicRefuseTrucks.com Library