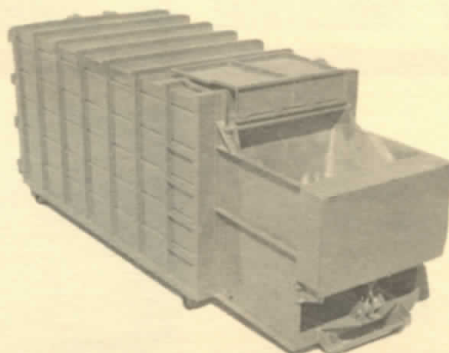




# STATIONARY ROLL-OFF PACKER FOR REFUSE COMPACTION AND DISPOSAL

**PROVIDES SANITARY, FIRE SAFE, ENCLOSED REFUSE COLLECTION IN ONE PORTABLE UNIT FOR...**

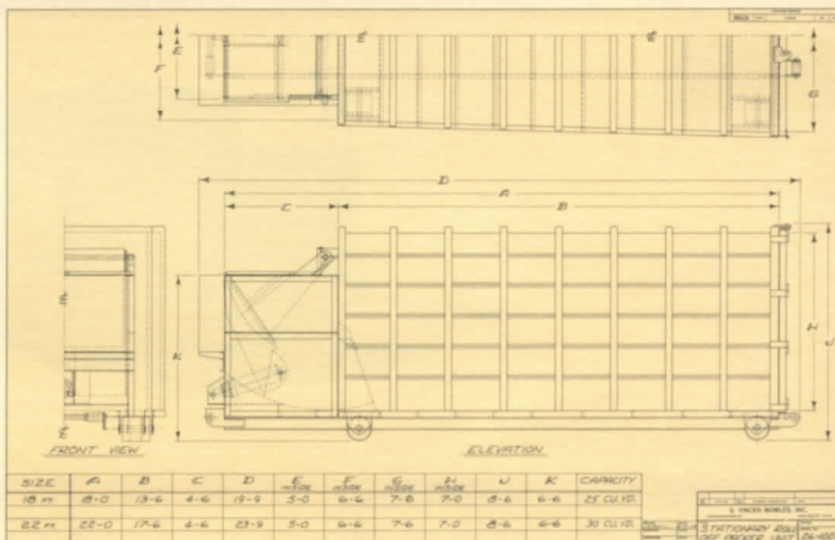


- DEPARTMENT STORES
- SUPERMARKETS
- MERCHANTS
- INDUSTRY
- APARTMENT HOUSES

**ELECTRIC CONTROLLED HYDRAULIC PACKER, WITH HEAVY ENCLOSED CONTAINER ATTACHED SPECIFICATIONS**

- PROVIDES OVER 30 CU. YD. CAPACITY
- COMPACTS AVERAGE\* REFUSE 3 TO 1
- TAPERED BODY FOR EASY UNLOADING
- HOPPER COVER, AND DOUBLE REAR DOORS
- EQUIPPED FOR ROLL-OFF USE
- PUSH BUTTON OPERATION OSCILLATES PACKER CYCLE AUTOMATICALLY
- COMPLETELY SELF-CONTAINED, READY TO PLUG INTO 220 VOLT SUPPLY.
- ENCLOSED REFUSE IN THIS CONTAINER IS:

1. FIRE SAFE
2. VANDAL PROOF
3. VANDAL PROOF
4. WIND SAFE
5. ODOR FREE
6. COMPLETELY SANITARY

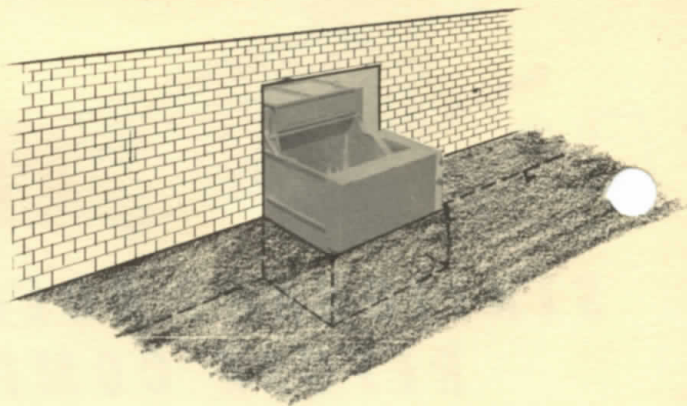
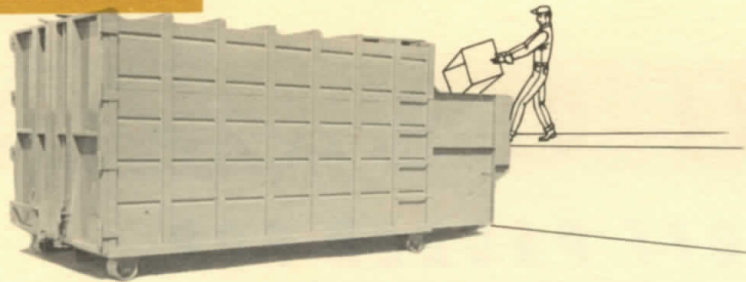


(\*NOTE: THESE BODIES ARE NOT DESIGNED FOR PACKING PALLETS, LARGE APPLIANCES STEEL OR LUMBER ITEMS. USE OPEN CONTAINERS FOR THESE.)

# S. VINCEN BOWLES, INC.

12039 BRANFORD ST., SUN VALLEY, CALIFORNIA

## APPLICATIONS:



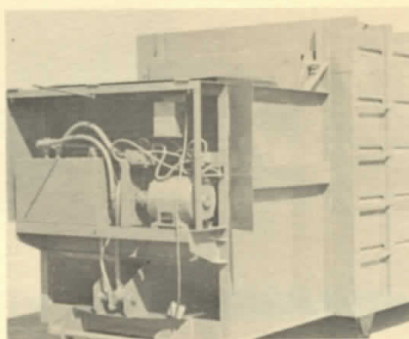
**DOCK LOCATIONS OUTSIDE ...  
IN THE PLANT ...**

**OR THROUGH THE WALL INSIDE ...**

**... AT ANY INDUSTRIAL OR COMMERCIAL FACILITY!**

## OPERATION:

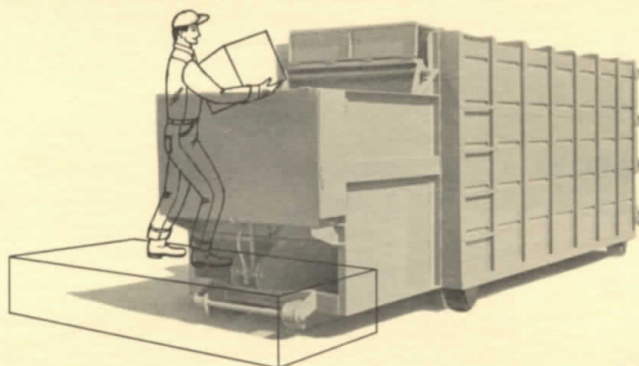
- 220 VOLT "PLUG IN"
- PUSHBUTTON "ON" & "OFF"
- AUTOMATIC PACKING CYCLE  
(May be arranged by customer having the service outlet equipped with a timer)



### POWER UNIT CONTAINS:

- 7½ H.P. ELECTRIC MOTOR
- HYDRAULIC PUMP
- DIRECTIONAL CONTROL VALVE
- PILOT CONTROL VALVE
- PRESSURE RELIEF VALVE
- HYDRAULIC OIL RESERVOIR
- LARGE 7" TWO STAGE TELESCOPIC PACKING CYLINDER

## LOADING:



**MANUAL "PITCH IN"**

**OR**

**MAY BE LOADED  
WITH TRACTOR LOADER**

## REMOVAL:

**REPLACED WITH AN EMPTY  
UNIT AND TRANSFERRED TO  
THE DISPOSAL AREA FOR  
UNLOADING ...**

**... WITH A BOWLES  
EQUIPPED TRUCK BODY TRANSFER  
ROLL-OFF FRAME ASSEMBLY  
ON A TRUCK CHASSIS.**



**S. VINCEN BOWLES, INC.**

ClassicRefuseTrucks.com Library

12039 BRANFORD ST., SUN VALLEY, CALIFORNIA — PHONE (213) 899-9511