

ORIGINATED FIRST IN 1959 BY S. VINCEN BOWLES, INC.

"BIG JOB" STATIONARY PACKERS

CUT VOLUME REFUSE HANDLING AND DISPOSAL COSTS! USE PROVEN BY CITIES,
CONTRACTORS, AND INDUSTRIAL PLANTS FROM NEW YORK TO CALIFORNIA TO HONOLULU!
APPLICATION-ENGINEERED MODELS IN TWO SEPARATE SERIES

BTP-SERIES



RIGIDLY MOUNTED TO A PERMANENT
FOUNDATION AT POINT OF VOLUME REFUSE
HANDLING

- Industrial
- Commercial
- Municipal Transfer Station

INJECTION PACKS REFUSE AND WASTE INTO
SEPARATE DISPOSAL TRANSPORT UNIT

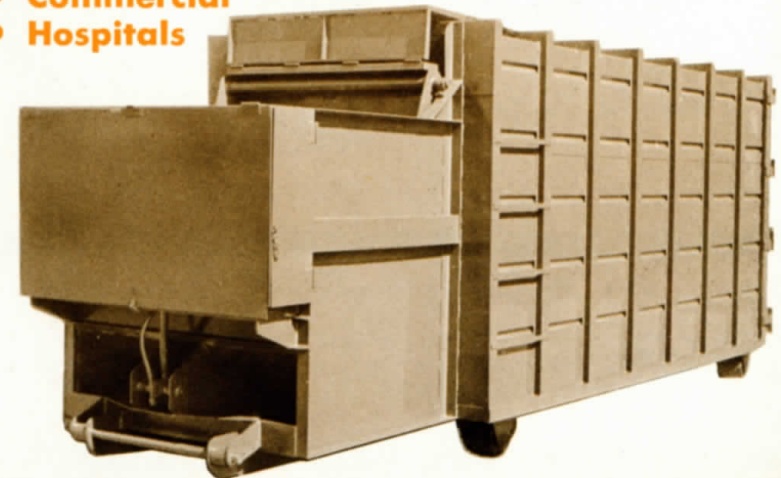
- Roll-Off Body
- Transfer Trailer
- Smaller Concept Detachable
Container Systems

BRO-PC PORTABLE SERIES

EACH IS A COMPLETELY SELF-CONTAINED
PACKER AND DISPOSAL TRANSPORT UNIT...
BUILT AS A UNITIZED ROLL-OFF BODY.

TRANSPORTED BY ROLL-OFF HOIST TRUCK
TO AND FROM ITS STATIONARY PACKER
LOCATION, IN A METHOD-ENGINEERED
REFUSE HANDLING AND DISPOSAL SYSTEM...

- Industrial
- Commercial
- Hospitals



QUALITY BUILT BY

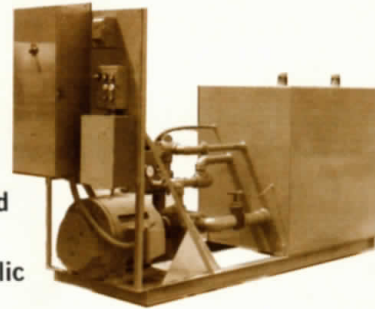
BOWLES

"BIG JOB" STATIONARY PACKERS SINCE 1959

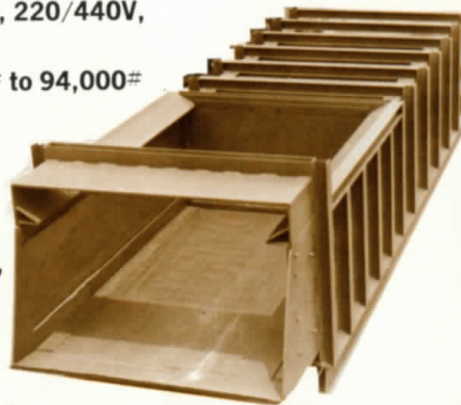
BTP-SERIES (Permanent)

4 STANDARD MODELS*

- 1½ to 6½ Cu. Yd. Hopper Size
- Cubic Volume 150-660 cyd. hr.
- 220/440 V. Electric System . . . Completely Wired For Ready Tie-In To Power Supply Furnished By Customer.
- Push Buttons to Activate Hydraulic Power Cycles.
- Hydraulic Power Pack Designed For Either Adjacent or Remote Installation.
- Electric Motor—10-60 H.P., 220/440V, 3-phase, 60 cycle.
- Compaction Force 68,000# to 94,000#



(Rigid Mounted On Permanent Foundation)



OPTIONAL EXTRAS:

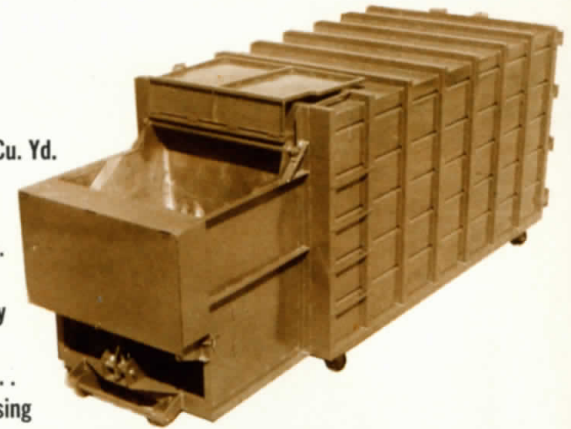
- Hopper extensions, to 30 cyd, above packer frame.
- Walk Way Deck.
- Cart Dumper . . . over side, or end.
- Remote Packer Controls.

* Special application units may be quoted on request.

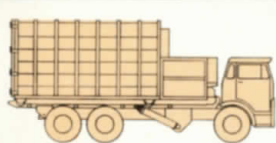
BRO-PC (Portable)

2 STANDARD MODELS*

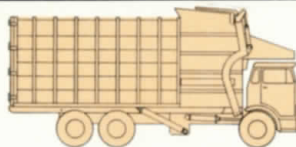
- 25 Cu. Yd.
- 30 Cu. Yd.
- Effective Hopper Size
- Low Side—1.8 Cu. Yd.
- High Side (shown)—2.8 Cu. Yd.
- Packer Assembly and Compactor/Transport Body are Unitized Design.
- Push Button Controls.
- Hydraulic Pump Driven by 7.5 H.P. Electric Motor, 220V, 3-phase, 60 cycle . . . in weather protected housing in each packer assembly.
- Standard Electric Power Cord and Plug (for connection to outlet box supplied by customer at each operating location).
- BRO-PC Is a Roll-Off Packing Container Handled By Conventional Bowles Roll-Off Truck. Tilt Dumps Load At Site.
- Compaction Force Averages 31,000 lbs. at 1200 lbs. P.S.I.



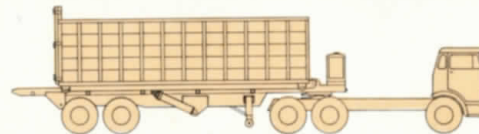
* Special adaptations to "Brand-X" hoists, or other variations, may be quoted on request.



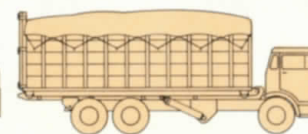
FRONT LOADING COLLECTION AND PACKING BODY



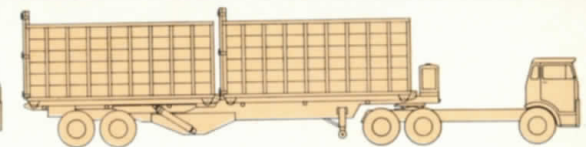
SELF-CONTAINED PACKING CONTAINER ON ROLL-OFF TRUCK



OPEN CONTAINER ON ROLL-OFF TRUCK



CONTAINER ON 26-FOOT ROLL-OFF, SEMI-TRAILER



TWO CONTAINER ON 40-FOOT DOUBLE ROLL-OFF SEMI-TRAILER

MAIN OFFICE:

S. VINCENT BOWLES, INC.
12039 Branford Street
Sun Valley, California 91352
Telephone: (213) 899-9511

EASTERN DIVISION OFFICE:

S. VINCENT BOWLES, INC.
1714 Capri Lane
Richmond, Indiana 47374
Telephone: (317) 962-1482

LOCALLY REPRESENTED BY:

ClassicRefuseTrucks.com Library