

TRADE  
MARK



**INTRODUCING . . .**

**A NEW CONCEPT IN LOW COST,  
HIGH EFFICIENCY WASTE REMOVAL . . .  
THE ADVANCE DESIGN**

FROM:

DYAR SALES & MACHINERY COMPANY  
75 CONCORD STREET  
NORTH READING, MASSACHUSETTS 01864  
TELEPHONE (617) 664-5311

**TITE-PAK!**



HELIX CORPORATION

P.O. Box 289 Crown Point, Indiana 46307 • Tel. (219) 663-0996

DIVISION OF PERFECTION-COBEY COMPANY

**Harsco**  
CORPORATION



**ADVANCE DESIGN**

# TITE-PAK

Trade  
Mark

## FEATURING:

- 30% to 50% greater load capacity — more pay stops per load.
- Completely hydraulic — for labor saving, one man operation.
- Compact design for close quarters — easier to maneuver.
- Lower initial investment — reduced operating costs.
- Automatic tail gate lift and lock — for operator safety.



### ADVANCE DESIGN for GREATER CAPACITY

Now . . . exclusive TITE-PAK ADVANCE DESIGN offers you as much as the more expensive, larger packers. By combining a dual pressure hydraulic system with the most unique yet simple "load holding" feature . . . TITE-PAK packs all types of waste and refuse tighter and more compact for bigger loads.

TITE-PAK Capacity: 14 cubic yard bed including hopper. 10 CUBIC YARD PACKING AREA . . . 30% TO 50% MORE LOAD CAPACITY THAN UNITS OF ANY COMPARABLE SIZE. Cor-Ten Steel is Corrosion Resistant and used for Added Strength, Durability and Long Life.

TITE-PAK has the ability to load 700 to 800 pounds per cubic yard, compared to other units having loading averages of approximately 400 to 500 pounds per cubic yard, as proven in comparative

field tests. Featuring a completely automatic dual pressure hydraulic system, the TITE-PAK provides steady, even distribution of packing blade pressure of 35 pounds **per square inch** — compared to most units offering packing blade pressures of only 4 to 8 pounds **per square inch**.

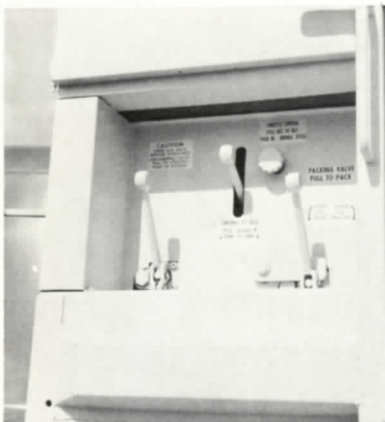
### MORE PAY STOPS — PER LOAD

Because of the new type packing system in the TITE-PAK, you are always assured of more pay stops before unloading which results in a time and money saving operation. The TITE-PAK provides more compaction per cubic yard and is faster and easier to operate than any refuse packer available today. Actual field reports of up to 350 stops on regular routes before unloading have been reported by TITE-PAK operators.

# EASY TO MANEUVER, EASY TO OPERATE, 3 SIMPLE STEPS... ONE MAN CAN DO IT!

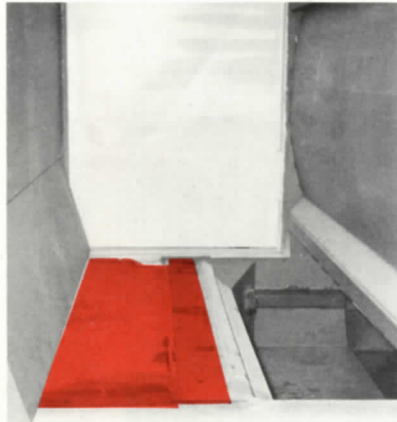
Combined with the outstanding advantages of greater load capacity per cubic yard and easy maneuverability because of its compact design, the TITE-PAK also offers fast, easy operation... one man can handle the entire loading and unloading operation from the control panel on the driver's side of the unit!

Here's how the Tite-Pak works:



1

After engaging the power take off, the operator loads refuse into the hopper (TITE-PAK can be loaded from either side). He then pulls the packing valve lever (also located on both sides). All the refuse is loaded into the ADVANCE DESIGN HOLDING AREA and hopper without fear of spillage onto the mechanical apparatus as found on many other units.



2

While the packing blade hydraulically compacts the load, the operator can reload — without waiting for the packing blade to return — as it can be loaded in any position. Even though the blade recycles in a few seconds — because of its unique design — you can load right on top of the packing blade no matter what position it is in!

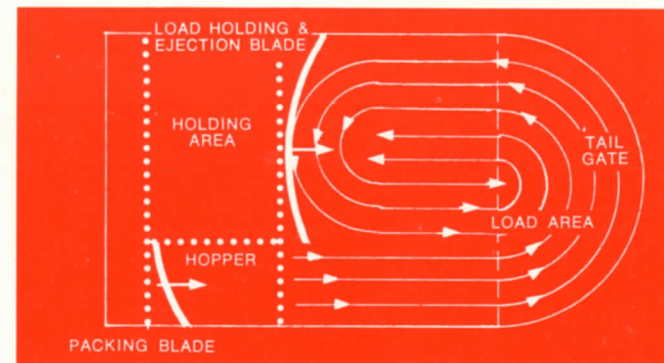


3

When tailgate is open, operator pulls "unload" control at front of unit and the compacted load is ejected automatically and completely... because TITE-PAK's exclusive unloading blade design continues to push the load past the rear end of the floor to make the job quick, easy and neat.

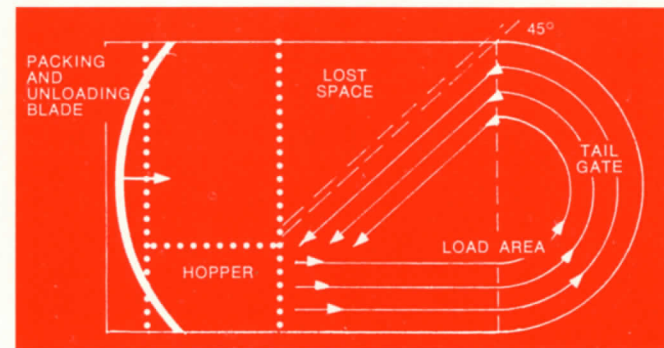
As an added safety feature (patent pending) the operator opens the tailgate from the front control panel to prevent rear end accidents common with many other units... no need for a man to be at the rear to manually prepare the door for unloading!

## HERE'S HOW TITE-PAK GIVES YOU MORE LOAD CAPACITY... MORE PAY STOPS PER LOAD.



### TITE-PAK — 2 BLADES

Refuse is loaded into hopper and pushed into load area with the packing blade... rolling and packing it into a very tight and compact load... to completely fill the load area. Packing blade returns automatically but does not have to return to load position before reloading... refuse can be added on top of blade even when load is being pushed into load area... refuse will fall into hopper as it recycles in a few seconds. Packing blade and load holding blade are both used in unloading.



### COMPARABLE UNITS — 1 BLADE

Refuse is loaded into hopper and pushed to rear—refuse reaches top of load area and begins to spill back onto loading area—as packing blade must return to load position, before operator can continue to fill hopper. As more refuse is added and pushed to rear, it begins to seek its own level at about 45° and begins to fall back or spill due to loose packing operation. Same blade used for packing and unloading.



**HELIX CORPORATION**  
P.O. Box 289  
Crown Point, Indiana 46307  
Tel. (219) 663-0996

DIVISION OF PERFECTION-COBEY COMPANY



# CONSIDER THE ADVANTAGES OF TITE-PAK

**COMPACT DESIGN** . . . offers greater maneuverability in and out of tight areas — unit measures only 94" wide by 153½" long and mounts on any 84" cab to axle truck.

**GREATER CAPACITY** . . . ADVANCE DESIGN compacts more weight per cubic yard than many larger more expensive units — up to 50% more weight per cubic yard which means more pay stops per load.

**EASE OF OPERATION** . . . complete hydraulic control system with 3 simple operations . . . one man can easily operate from driver's side of unit. No special loading techniques required as with other side loaders.

## CONVENIENT — SAFE

- 1) loads from either side for safety and convenience.
- 2) reliable, completely safe pressure controlled automatic packing cycle.
- 3) rear door is operated from front control panel . . . rear end accidents are prevented.

**LOW COST — ECONOMICAL** . . . complete hydraulic operation eliminates the need for costly mechanical maintenance and provides much more pressure at lower operating pressure for longer pump life and lower power requirements.

**EXTRA STORAGE CAPACITY** . . . 32 cubic feet, convenient storage compartment located above control panel offers plenty of room and easy access for tools, equipment or water spray equipment.

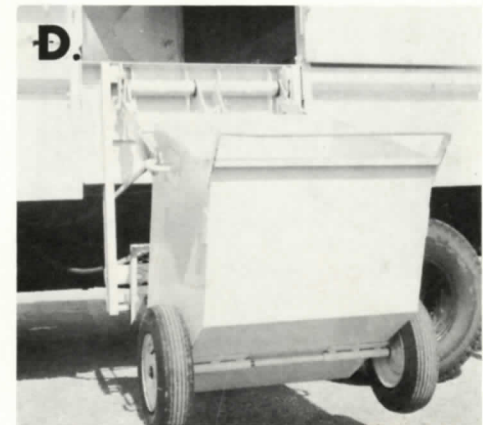
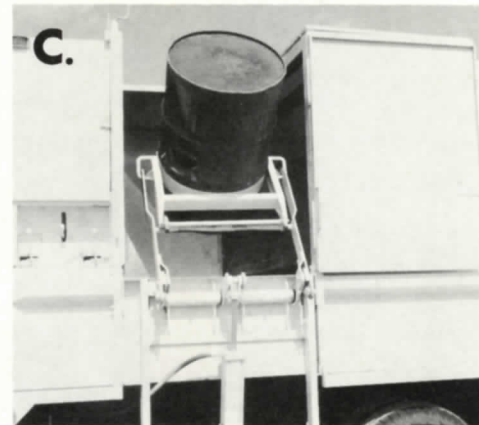
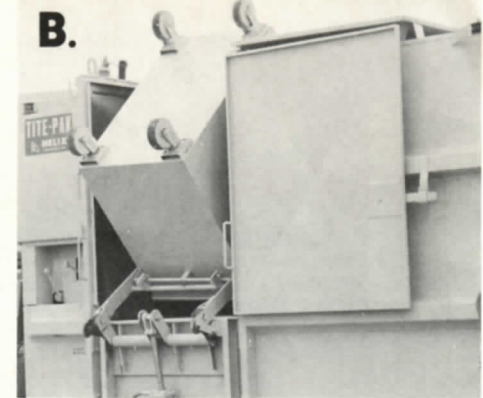
**ENGINE THROTTLE HYDRAULICALLY CONTROLLED** . . . engine speed during packing cycle regulated by packing pressure — does not depend on solenoid or mechanical linkage.

**HYDRAULIC CYLINDERS** . . . all are tie-rod construction and equipped with "O" rings for long life and low maintenance costs.

**HYDRAULIC CONTROLS** . . . are all automatic and pressure operated.

**CONVENIENT FOLD DOWN STEPS** . . . self cleaning — non-slip. Installed on both sides.

**IDENTIFICATION LIGHTS** . . . to meet I.C.C. regulations.



## TITE-PAK REFUSE PACKER BODY

### BODY SPECIFICATIONS

Overall Length (including tailgate)	153½"
Overall Width	94"
Height (above chassis frame)	80"
Loading Door Width	38"
Top Doors (in line with side doors)	38" x 43"
Weight	4500 pounds

### HYDRAULIC EQUIPMENT

Packing Blade Cylinder	Dual — 2 way
Packing Blade Force	38,000 pounds
Packing Cylinder Stroke	30"
Oil Operating Pressure	1500 pounds
Oil Tank Capacity	12 gallons
Rear Door Cylinders (Inset)	2
Tailgate (Open-Close-Lock)	Hydraulic
Engine Speed Control — Hydraulic Pump	Hydraulic

### RECOMMENDED CHASSIS

Tonnage	1-1½-2 Ton
Cab to Axle	84"
G V W Rating	16,000 pounds
Front and Rear Springs	Heavy Duty
Clutch	Heavy Duty
*Brakes	Heavy Duty
Tires — Dual Rear Wheels	7.50 x 16-17-20, 8 ply

\*Power Brakes as well as Power Steering Recommended.

Specifications subject to change without notice.

## GENERAL SPECIFICATIONS

**MOUNTING:** TITE-PAK units are available mounted on your choice of any standard 84" cab to axle truck . . . or unmounted for mounting at your plant site.

**PAINTING:** TITE-PAK units are painted with two coats of primer paint. Finish color to customer specifications.

## TITE-PAK OPTIONS . . .

**A. HYDRAULIC LOADING LIFT** — for easy loading of heavy containers. This unique hydraulic lift can be mounted on either or both sides of unit.

**B. 1-YARD CONTAINER** — with folding lid. 2 Swivel and 2 rigid casters bolted to mounting plate for easy replacement. 26" wide, 42" long, 36" high.

**C. BARREL LIFT** — designed for use with heavy drums or barrels filled with refuse that cannot be lifted by hand. Easy mount. Attach to drum and place on hydraulic lift.

**D. TOTE-TRUCK** — heavy duty Tote-Truck designed for easy access in and out of tight areas. Simply load Tote-Truck, push to main unit, place on hydraulic lift and load. 24" wide, 30" long, with sloping floor — 18½" to 34" deep.



**HELIX CORPORATION**

P.O. Box 289  
Crown Point, Indiana 46307  
Tel. (219) 663-0996

DIVISION OF PERFECTION-COBEY COMPANY

**Harsco**  
CORPORATION