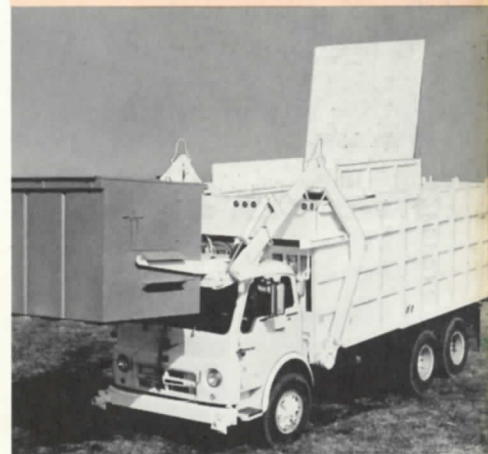


**THE**

# Cobey **FORK-TAINER®**



- 78,000 pounds compaction
- 24 or 30 cubic yard models
- Bubble gate gives you 6 EXTRA YARDS per load



**Cobey**  
*the name of Perfection  
in materials handling*

- Commercial Waste Removal
- Industrial Waste Pick-Up
- Residential Collections

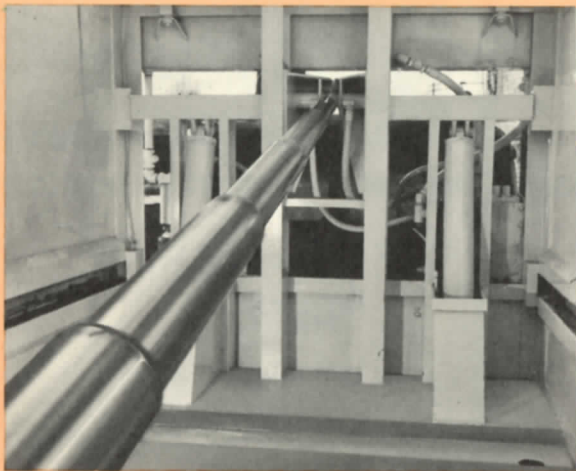
# Cobey **FORK-TAINER**<sup>®</sup> gives

Hydraulic Hopper Cover: cab lever control (std.) or raises automatically as container lifts (optional).

Litterguards—fixed (std.) or hydraulic (optional).

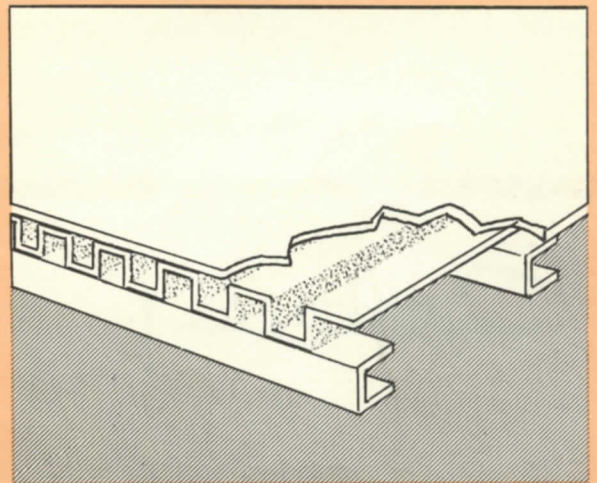
Twin tailgate lift cylinders.

Bubble tailgate gives you 6 extra yards per load.



◀ **RUGGED CONSTRUCTION**—The heavy duty materials used to make the body insure long dependable life. Lift arm cylinders are inside for protection of chrome surfaces.

▶ **DOUBLE FLOOR**—A typical Cobey bonus feature: a normal steel floor with corrugated sub-floor for superior strength and longer life.



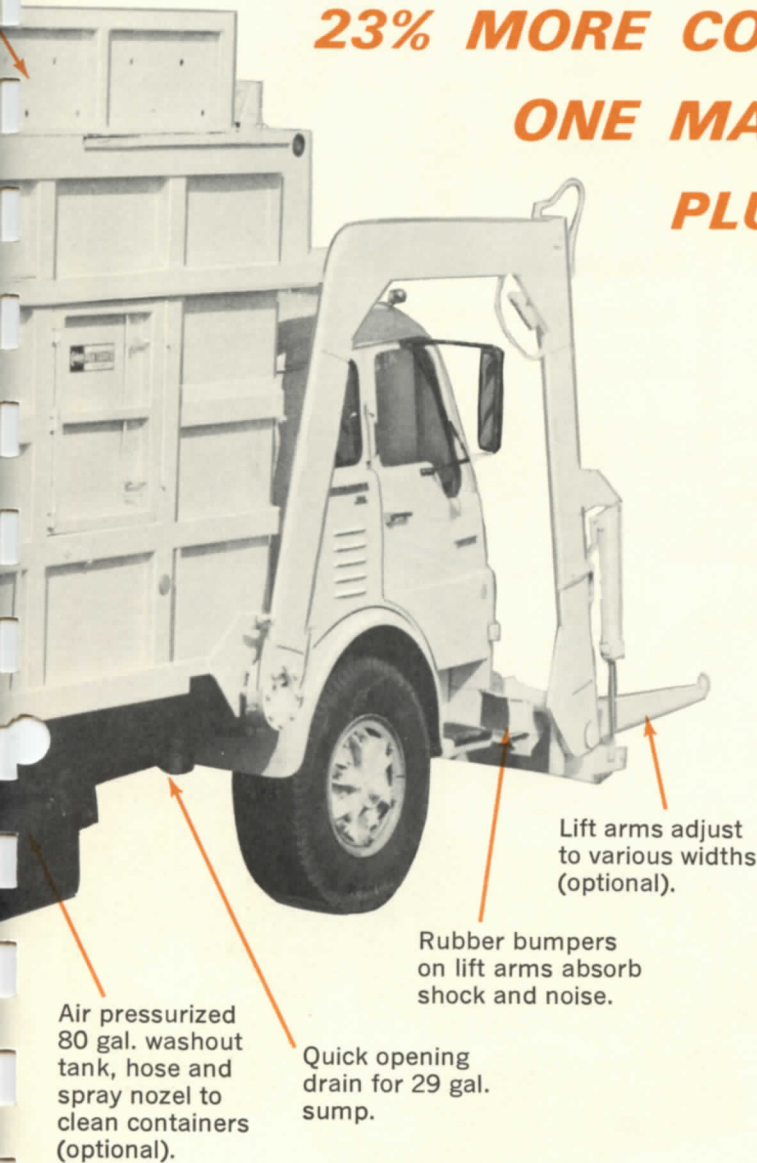


# you all these advantages...

**23% MORE CONTAINERS PER LOAD...**

**ONE MAN OPERATION!**

**PLUS ALL THESE FEATURES**



Air pressurized 80 gal. washout tank, hose and spray nozzle to clean containers (optional).

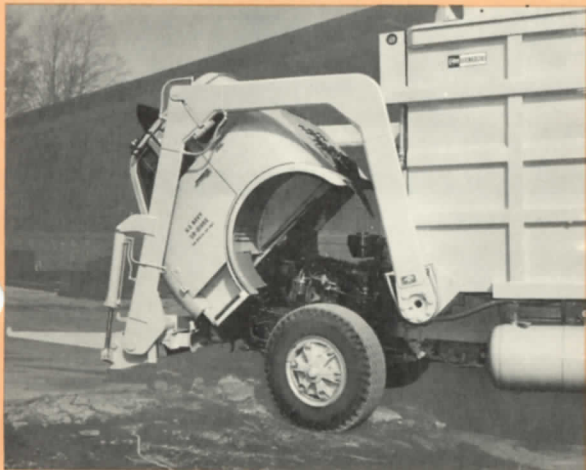
Quick opening drain for 29 gal. sump.

Rubber bumpers on lift arms absorb shock and noise.

Lift arms adjust to various widths (optional).

- Lift Arm Cylinders push to raise container for extra efficiency and packing life.
- Lift Arm Cylinders are inside body for protection of chrome surfaces.
- Platen delivers 78,000 lbs. of thrust.
- Cab tilts for service with lift arms down or raised.
- Fork-Tainer travels with arms down or with arms fully raised—less than 13 ft. clearance.
- Pick up containers from dock or ground level.
- Double floor gives extra strength.
- Four rows of retaining teeth inside body hold load in position.

**NOTE:** See Pak-Tainer catalog for additional information on body.



◀ **SERVICE ACCESSIBILITY**—Cab tilts for service with lift arms down or raised. Hopper cover stays down when cab is tilted without making any disconnections.

**CAB CONTROLS**—Color coded "dead-man" type controls are positioned to enable driver to handle ALL operations from the cab. ▶



# TECHNICAL *FORK-TAINER* INFORMATION

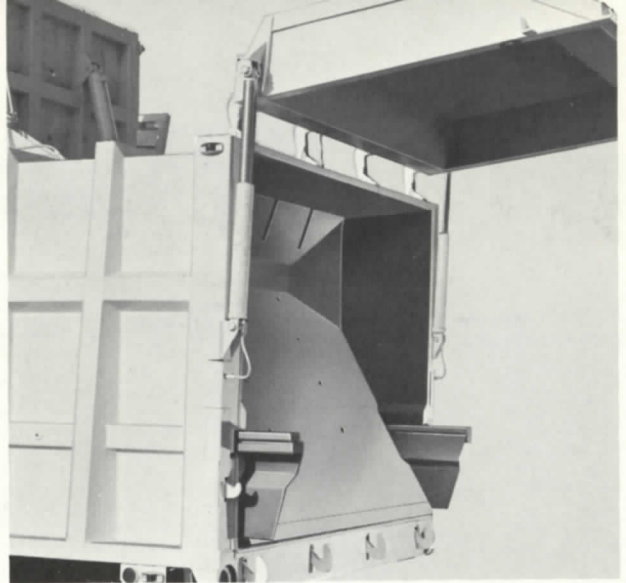
## SPECIFICATIONS FOR FORK-TAINER

Body Model	FT-1224	FT-1230
Length, Inside Body	17' 0"	20' 6"
Width, Inside Body	84"	84"
Height, Inside Body	74"	74"
Payload Capacity	24 Cu. Yd.	30 Cu. Yd.
Liquid Capacity	1340 Gal.	1660 Gal.
Side Door Opening	30" x 34"	30" x 34"
Hopper Door Opening	84" x 96"	84" x 96"
Lift Arm Capacity	4500 or 6000 lbs.	4500 or 6000 lbs.

Truck Body is made of High Tensile Steel

### APPROXIMATE TRUCK C. A. REQUIRED

Single Axle – Tilt or Cab over only	126" - 132"	
Tandem Axle – Tilt or Cab over only	120" - 132"	144" - 156"



Twin cylinders raise and lower bubble tailgate. Platen moves out past body to insure complete ejection of the load.

## CONTAINERS FOR USE WITH COBEY FORK-TAINER SYSTEM...

### HOPPER TYPE CONTAINER – with lids, less casters

Capacity	Height (A)*	Width (B)	Length (C)	Approx. Weight
2 Cu. Yd.	42 <sup>7</sup> / <sub>8</sub> "	38 <sup>1</sup> / <sub>4</sub> "	82 <sup>1</sup> / <sub>2</sub> "	590 lbs.
3 Cu. Yd.	50 <sup>7</sup> / <sub>8</sub> "	45"	82"	790 lbs.
4 Cu. Yd.	52 <sup>1</sup> / <sub>4</sub> "	57"	82"	900 lbs.

All maximum outside dimensions

### UTILITY-TYPE CONTAINERS (with lids, less casters)

Capacity	Height (A)*	Width (B)	Length (C)	Approx. Weight
6 Cu. Yd.	64 <sup>1</sup> / <sub>4</sub> "	72"	82"	1400 lbs.
8 Cu. Yd.	84"	72"	82"	1800 lbs.

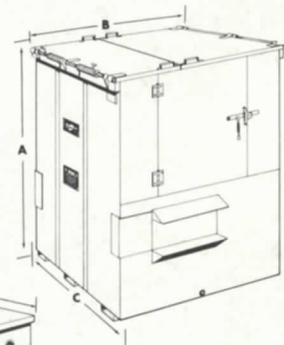
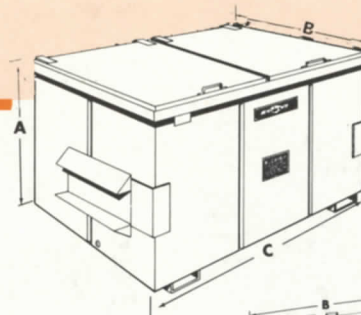
\*Add 7<sup>1</sup>/<sub>4</sub> inches to height for standard 6" casters. \*\*Add 9<sup>3</sup>/<sub>4</sub> inches to height for standard 8" casters.

Capacity	Train-Tainer Height (A)***	Width (B)	Length (C)**	Approx. Weight
4 Cu. Yd.	46 <sup>1</sup> / <sub>2</sub> "	82"	75"	1300 lbs.
5 Cu. Yd.	56 <sup>1</sup> / <sub>2</sub> "	82"	75"	1400 lbs.

\*\*\* Includes 8<sup>3</sup>/<sub>8</sub>" axle to ground clearance.

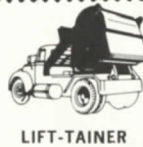
\*\* 116<sup>1</sup>/<sub>2</sub>" including tongue assembly.

Optional equipment includes: Torsion springs for end doors, counter balance springs for top lids, push handles for containers.



## SYSTEMIZE WITH

# Cobey



Sold and Serviced by:

# Cobey

## REFUSE EQUIPMENT

PERFECTION-COBEY CO.

Galion, Ohio 44833

A DIVISION OF  
**Harsco**  
CORPORATION

ClassicRefuseTrucks.com Library