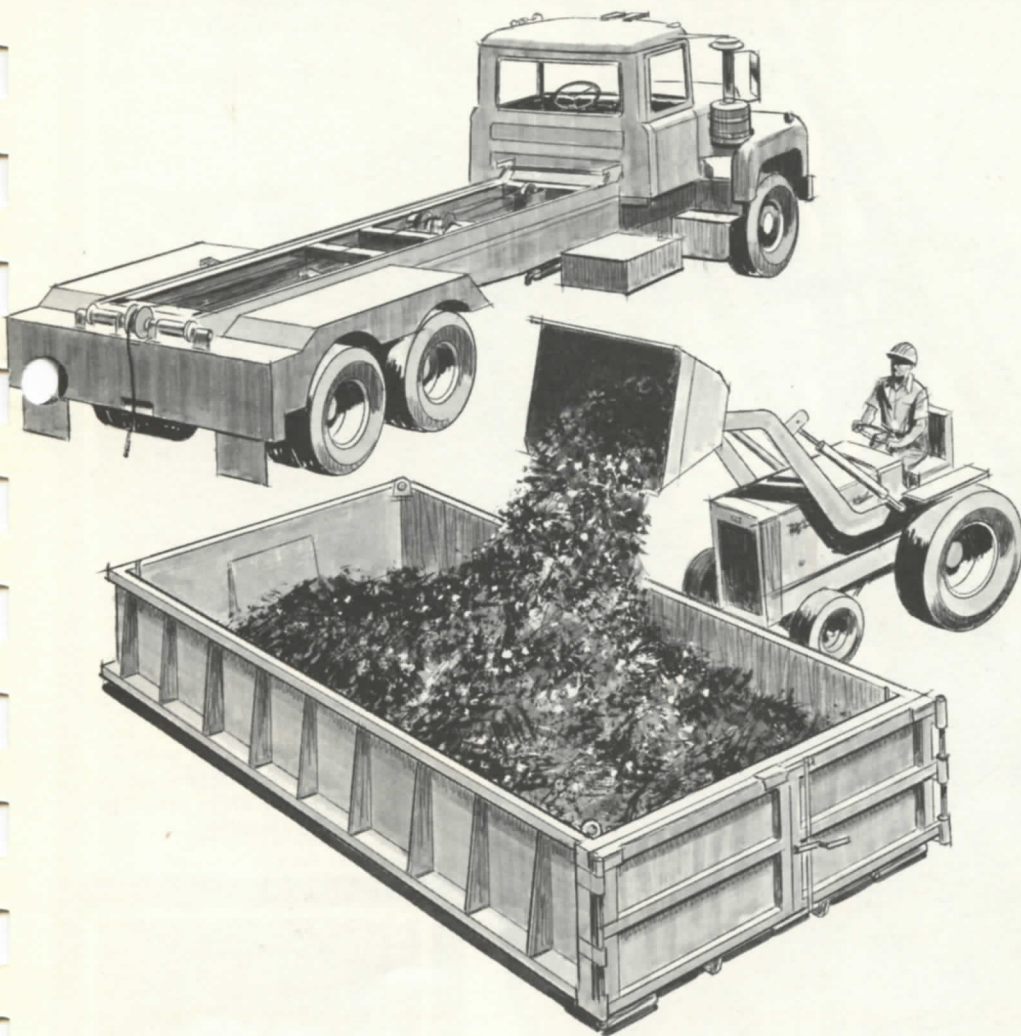


THE **FLEETAINER**[®] SYSTEM

cobey



FLEETAINER[®]

is a versatile
one man loading
and unloading
operation.

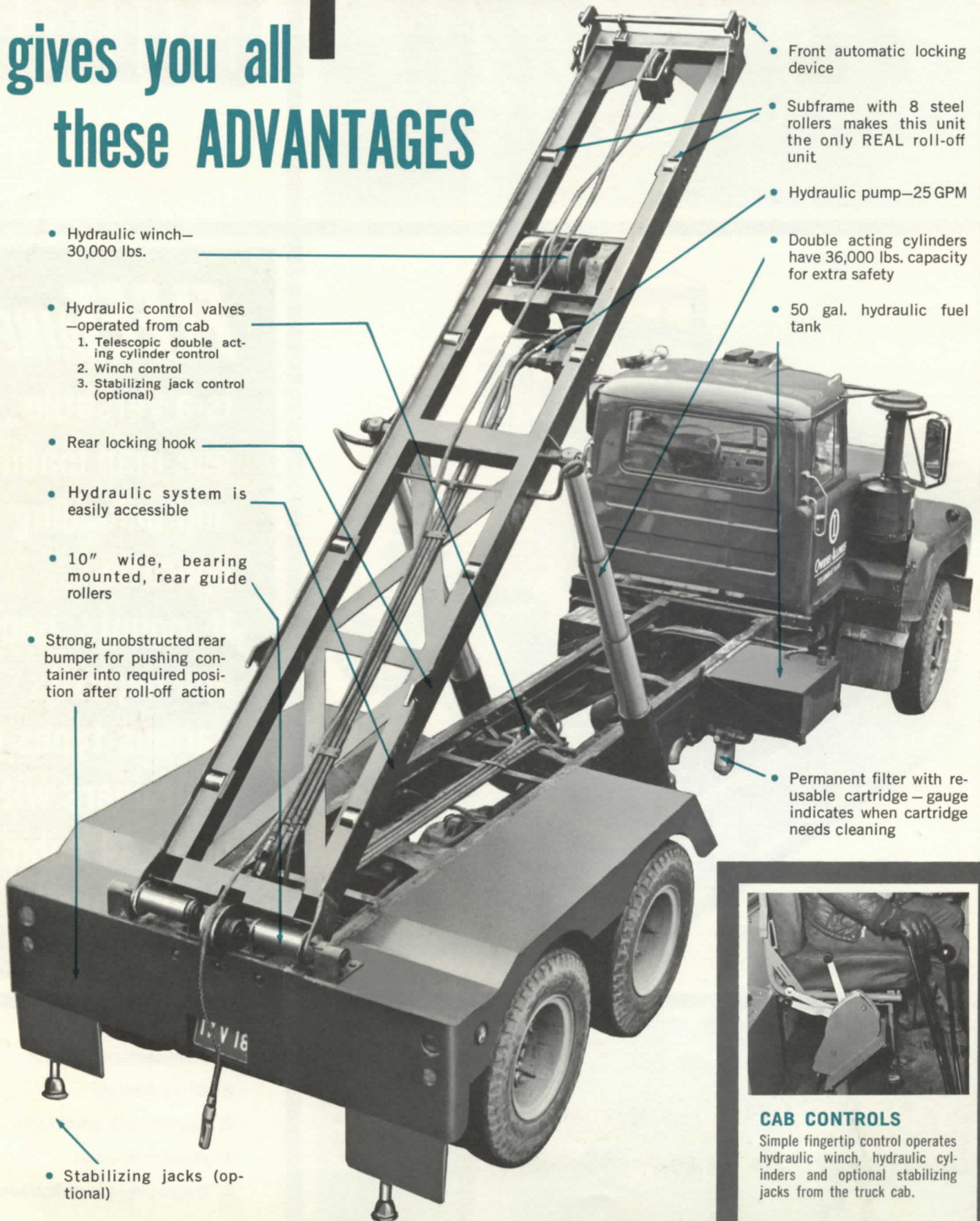
It mounts, hauls
and deposits
various types of
containers with
up to 44 cubic
yard capacity.

cobey / *the name of Perfection
in materials handling*

1. Manufacturing Plants
2. Scrap Dealers
3. Foundries & Steel Mills
4. Airports & Cities
5. Government Installations

COBEY FLEETAINER®

gives you all
these **ADVANTAGES**



- Hydraulic winch—30,000 lbs.

- Hydraulic control valves—operated from cab
 1. Telescopic double acting cylinder control
 2. Winch control
 3. Stabilizing jack control (optional)

- Rear locking hook

- Hydraulic system is easily accessible

- 10" wide, bearing mounted, rear guide rollers

- Strong, unobstructed rear bumper for pushing container into required position after roll-off action

- Stabilizing jacks (optional)

- Front automatic locking device

- Subframe with 8 steel rollers makes this unit the only REAL roll-off unit

- Hydraulic pump—25 GPM

- Double acting cylinders have 36,000 lbs. capacity for extra safety

- 50 gal. hydraulic fuel tank

- Permanent filter with reusable cartridge—gauge indicates when cartridge needs cleaning



CAB CONTROLS

Simple fingertip control operates hydraulic winch, hydraulic cylinders and optional stabilizing jacks from the truck cab.

...and HOW IT WORKS

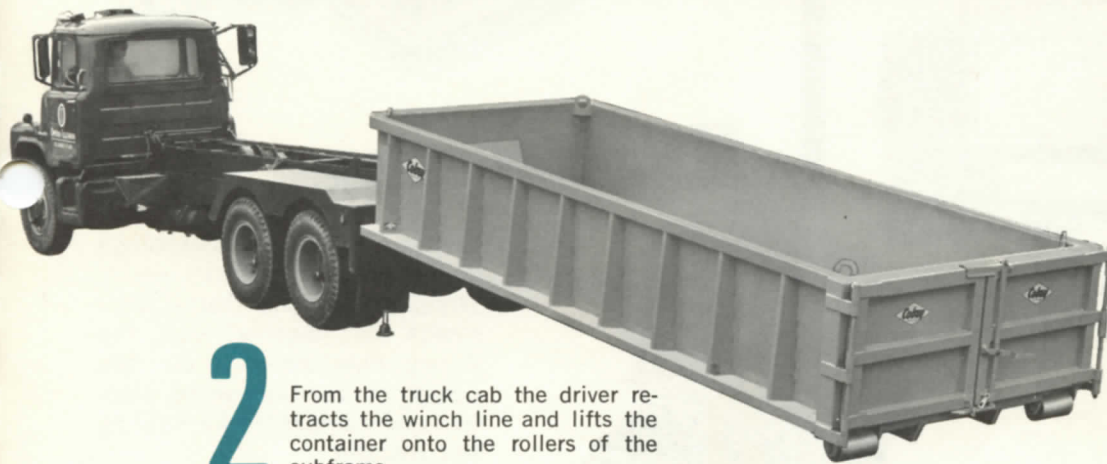


1

A ONE MAN OPERATION — the driver backs up to the container to be loaded, . . .

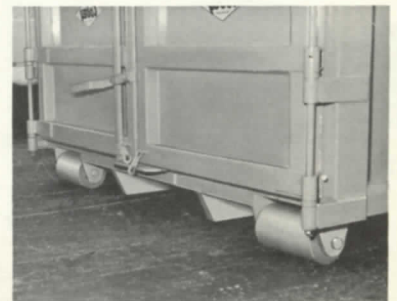


. . . secures winch line to container hook, and returns to cab to begin mounting operation. All other operations are cab controlled.

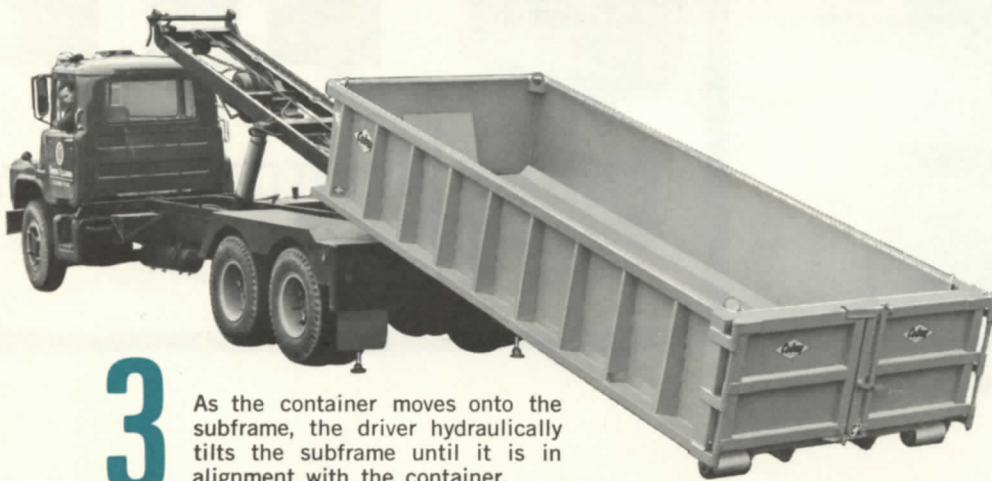


2

From the truck cab the driver retracts the winch line and lifts the container onto the rollers of the subframe.

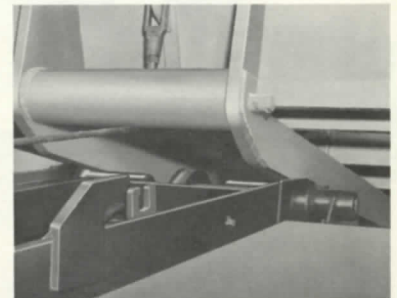


Large rear rollers permit easy movement of container in "roll-off" or "roll-on" action.

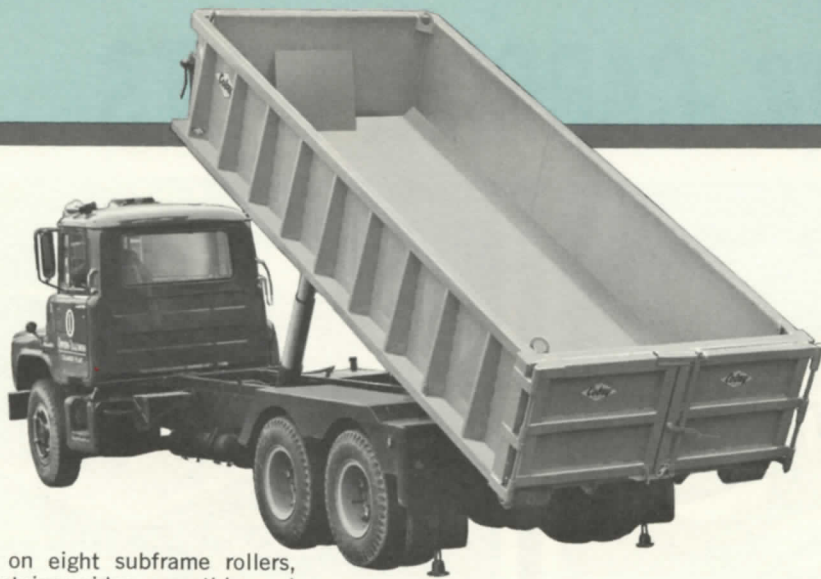


3

As the container moves onto the subframe, the driver hydraulically tilts the subframe until it is in alignment with the container.

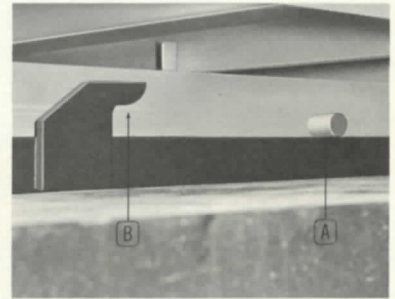


Front skids of the container allows a smooth movement onto the Fleet-Tainer subframe as the winch line is drawn in.

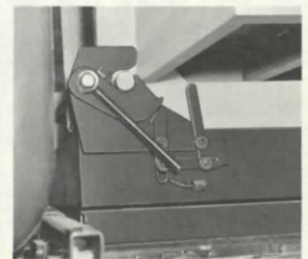


4

Riding on eight subframe rollers, the container rides smoothly and quickly into position.



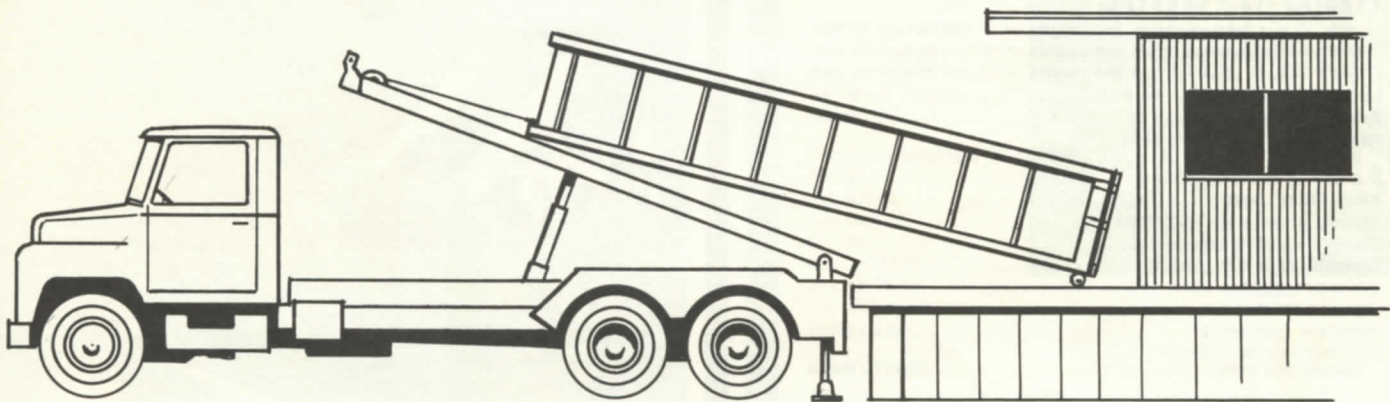
Container moves smoothly into forward mounting position. In full forward position, container pin (A) is locked under subframe hook (B).



5

Above see before and after views of automatic locking device at the front of the subframe.

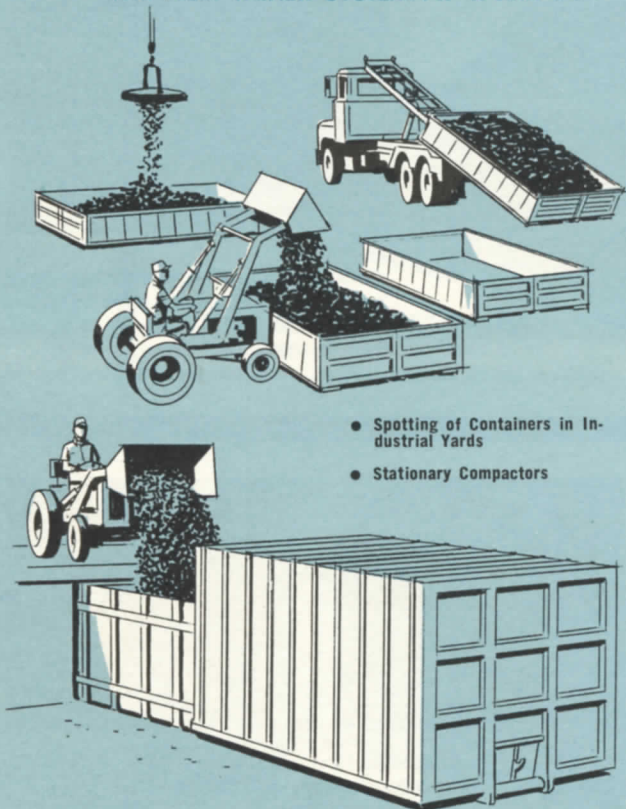
Fleet-Tainer ready to travel with container fully loaded and locked in position.



Works off dock level as easily as on flat ground

SKID-MOUNTED *TAINERS* for COBEY *FLEETAINER*® CARRIER UNITS...

THE FLEET-TAINER SYSTEM AT WORK . . .



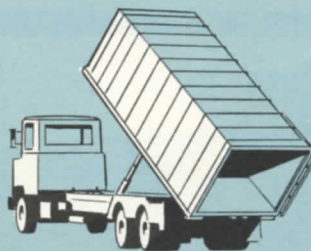
- Spotting of Containers in Industrial Yards
- Stationary Compactors

SPECIFICATIONS

Basic Fleet-Tainer Carrier Units

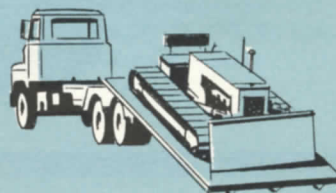
CARRIER UNIT LENGTHS:

17 FT. — For Container Truck Bed Lengths of 17 feet through 21 feet.	
18 FT. — For Container Truck Bed Lengths of 18 feet through 22 feet.	
19 FT. — For Container Truck Bed Lengths of 19 feet through 23 feet.	
Weight of complete unit, less truck	Approx. 5,120 lbs.
Raising or lowering angle	45 degrees
Height of unit above truck frame (in lowered position)	6¾" to 9" depending on chassis
Diameter of operating cables	¾ inch
Rated lifting capacity	30,000 lbs.
Capacity of pump (@ 1,000 rpm)	.25 gal./min.
Standard operating pressure	1,500 PSI
Container capacities (closed)	15-44 cu. yds.
Container capacities (open)	15-40 cu. yds.
Hydraulic Winch	30,000 lb. line pull
Telescopic cylinders (2)	Double-acting
C/A (rear axle, or center of tandem axle unit)	156-175 inches



CLOSED CONTAINERS Closed containers are available in capacities from 15 to 44 cu. yds. with body lengths from 17 to 23 feet. Double vertical rear doors, side-hinged doors and top doors are available. For use in refuse transfer stations, with stationary compactors and close body applications.

FLAT BED Use as equipment trailer, logging or pipe rig, or transportation of oversized materials of any kind. Available from 17' to 23' lengths, complete with anchoring hardware for safe, sure loading and transport. Load the unit flat on the ground and one man will hoist it onto the Fleet-Tainer.



OPEN CONTAINERS equipped with side-hinged tailgate for dumping. Also available in 17' through 23' lengths. Ruggedly built to handle any cargo from gravel to scrap metal. Container capacities from 15 to 40 cu. yds., depending upon body lengths.

SPECIAL BODY MOUNTINGS

Cobey can equip your oil, water and gasoline bulk systems or similar equipment for Fleet-Tainer use. Give us your basic specifications and we'll show you how quickly and easily it can be adapted to Fleet-Tainer.

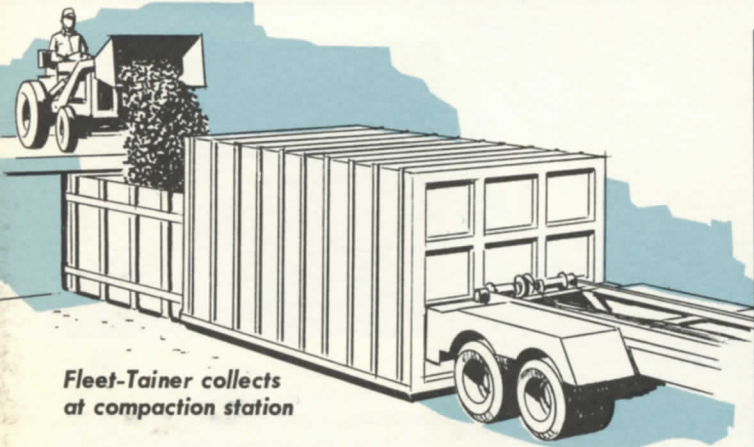


Special containers will be designed on request!

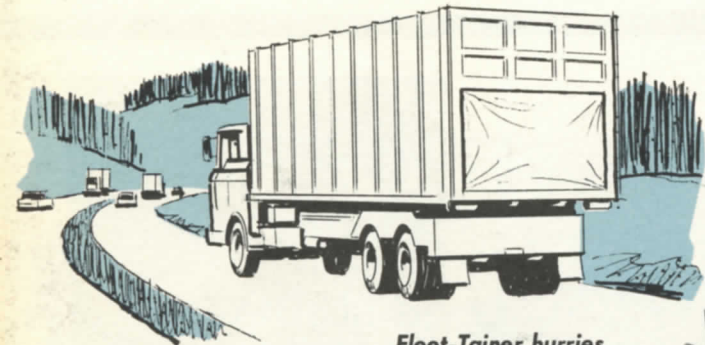
Fleet-Tainer unit can be adapted to handle other make containers.

PLEASE LIFT FLAP

cobey has a full range of REFUSE HANDLING EQUIPMENT...



*Fleet-Tainer collects
at compaction station*

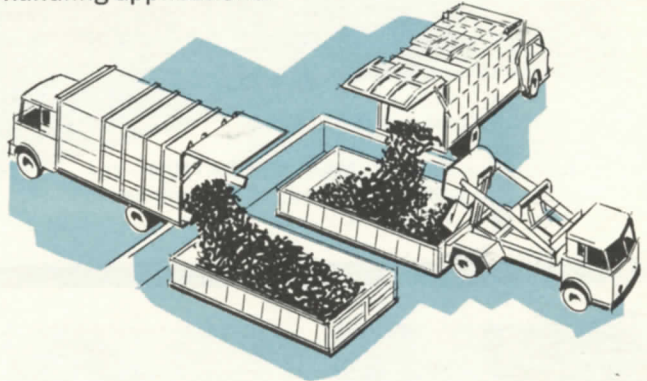


*Fleet-Tainer hurries
to dump area*



*Fleet-Tainer
dumping action*

Swiftpak side loader, Pak-Tainer, Liftainer and Fleet-Tainer units are well suited for refuse handling and storage because they are equipped to handle any high capacity refuse accumulations as well as collect materials. The large open containers are ideal as transfer stations for all kinds of materials handling applications.



TRAIN-TAINER SYSTEM...

is the answer to low-cost refuse collection in residential areas. When loaded, the Train-Tainer meets the "mother" unit, the Cobey Pak-Tainer, where the containers are uncoupled, emptied and compacted for hauling to dumpsite.



cobey | **PERFECTION-COBEY CO**

Division of Harsco Corporation, Galion, Ohio

Sold and Serviced by

cobey