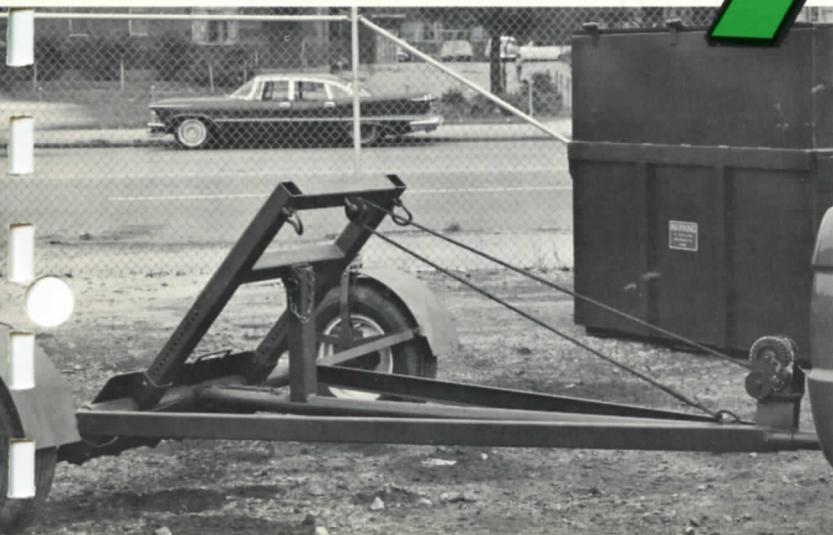


Now! A new helpmate for container delivery and maintenance!



Cobey

tainer toter

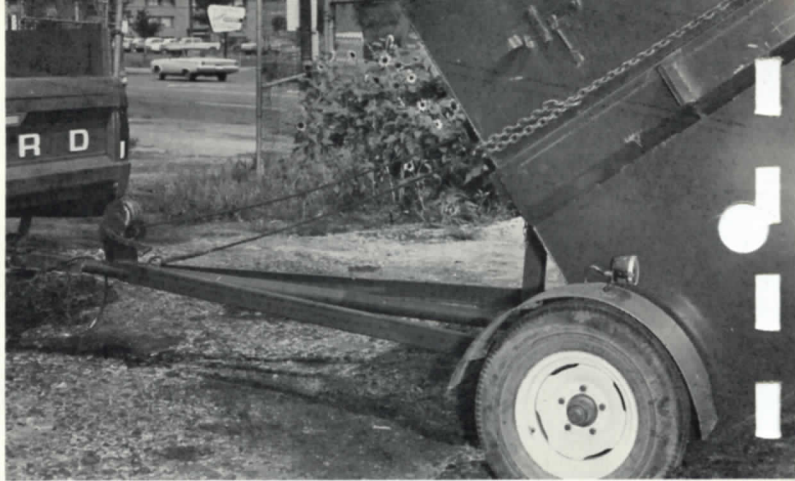


If the job of hauling refuse containers is tying up valuable equipment (or ruining the bed of your pickup!), this rugged new gem from Cobey is for you! The "Tainer-Toter," a one-man two-wheeled unit, will even hitch up to an automobile, and will deliver your containers . . . **anywhere!** Perfect for your maintenance program, or delivery of new units.

COBEY COMPANY

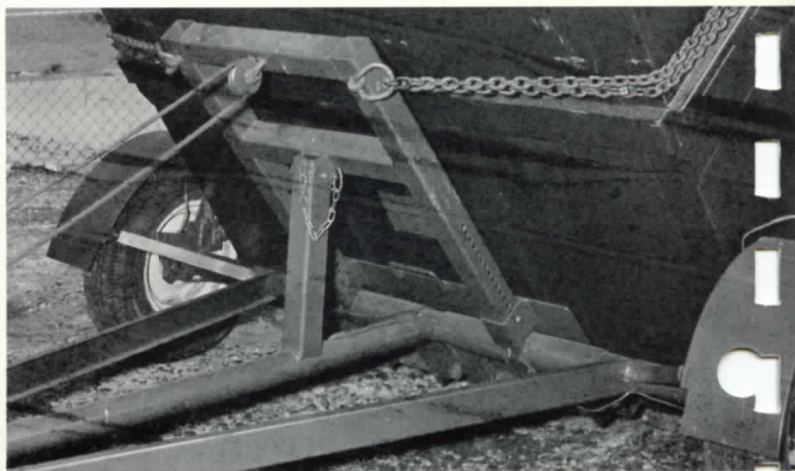
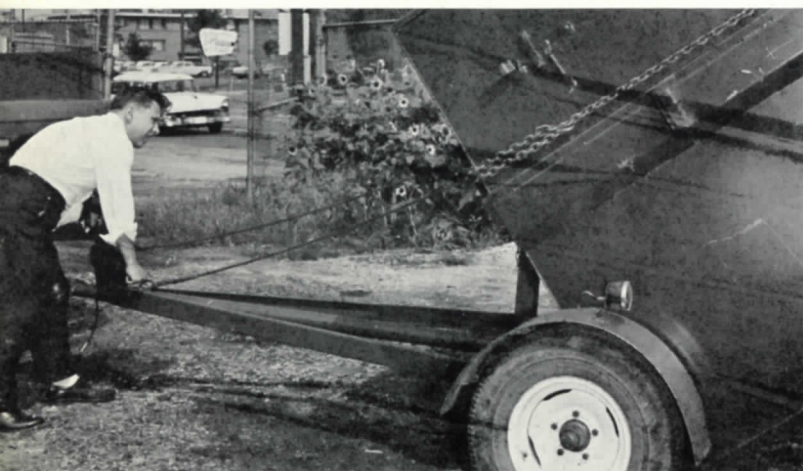
Division of Harsco Corporation

Galion, Ohio



NOT THIS! You can smell the danger in this situation, and it's really rough on a pickup! If you use heavier equipment for container transport, you simply tie up that many more dollars.

BUT THIS! Safe, sure and simple! You can mount the container while you're hitched or unhitched, without danger or backbreaking work. Will handle **any** empty container up to 78" wide.



ONE-MAN OPERATION! Think of the hours and equipment saved! Fool-proof hand winch does the job, angles container properly for transport, lowers it safely at **exact** point of delivery.

RUGGEDLY BUILT! Timken bearing equipped, 5-stud hubs, 1½" cold roll steel spindles. Heavy duty lock pin and chain assembly holds container firmly in position. Flange adjusts for caster units.

SPECIFICATIONS

Capacity — Will handle any Pak-Tainer container of 1 thru 8 cu. yds. Max. container width 78", any make. Timken bearing equipped, 1½" cold-roll steel spindles, 5-stud hubs, 14" wheels, 7.50 x 14 tires std. eqpt.

2" ball furnished with hitch as standard equipment. Heavy gauge fenders; stop and tail lights; hand winch. Height of flange is adjustable to accommodate containers with or without casters.

Specifications subject to change without notice.
Patent Pending

Take it anywhere at all!

