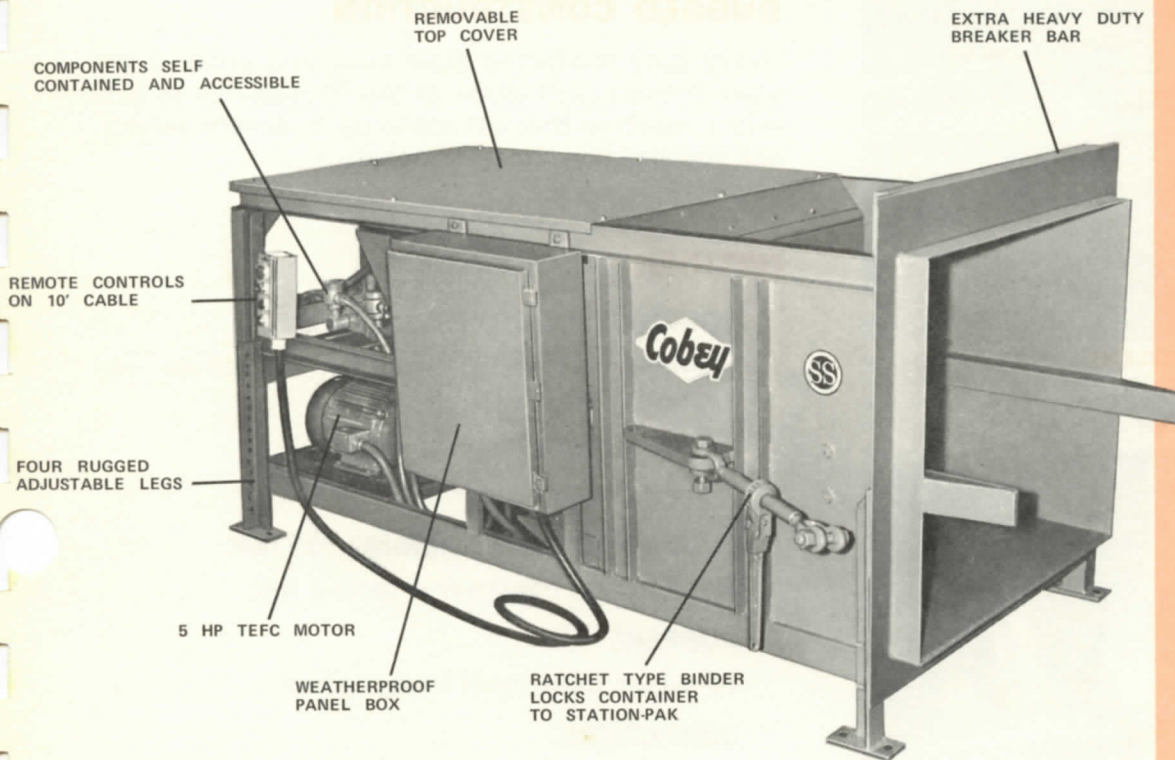


Cobey

**MODEL
SP-10**

STATION-PAK



Handles up to **125 yards** of refuse per hour—
container penetration sized for extra compaction

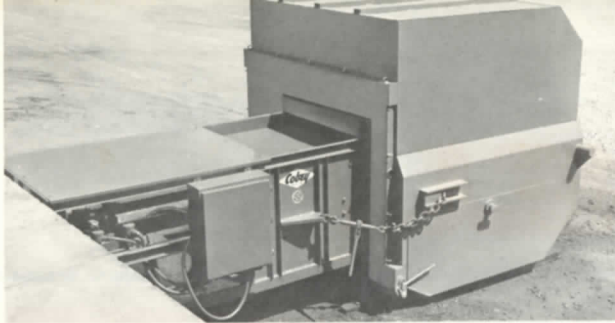
Cobey's Model SP-10 Station-Pak has been specifically engineered for modern refuse disposal at commercial and industrial sites such as shopping centers, motels, hotels, department stores, hospitals, schools, airports and restaurants. The SP-10's 25 second cycle can be depended upon to compact up to 125 yards per hour—hour after hour.

Built for severe service, the SP-10 crushes wood boxes, skids, cartons and other space consuming refuse. It's 11 ton compaction force compresses this broken rubbish into a detachable steel container.

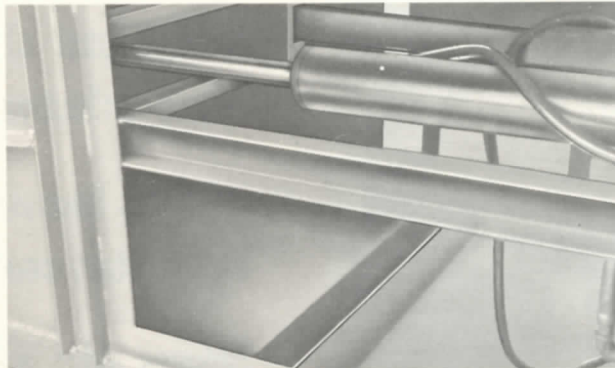
Plagued by employee pilferage? Are your open refuse containers used as a "depository" for **your** inventory? Increase your profits, as many businessmen have, by using a Cobey Station-Pak. It can save you thousands of dollars a year!

- reduces cost of refuse collection
- improves housekeeping and sanitary conditions
- reduces odor and fly problems
- takes less space than regular containers
- compacts refuse in containers 2 yards and larger
- reduces employee pilferage

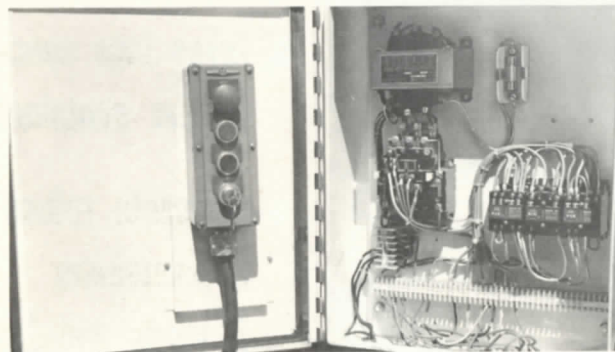




EASY TO INSTALL AND SERVICE—The SP-10 is completely self-contained. To install simply adjust leg height, anchor in place and connect to electric power line. There's no separate power pack to install! No chance of mistakes in wiring and plumbing! Saves dock space! All components are accessible from either side or by removing top cover.



REDUCE ODOR AND FLY PROBLEMS—Design of the charging box floor flows liquids into the container . . . not on the ground! Mounted on legs, the SP-10 has lots of space underneath for easy cleaning to meet the most rigid inspection.



ELECTRIC CONTROLS—Plagued by 208 voltage? Deluxe electrical components are standard on the SP-10 to handle this and other common voltages without need for "special order equipment". All wiring is color and number coded. Weatherproof panel box.

SUPERIOR HYDRAULIC SYSTEM*

Protects against damage and downtime—automatically retracts and stops blade if overloaded. It can be restarted immediately. The exclusive design does away with troublesome limit switches and delicate linkages. Powered by a 5 HP totally enclosed, fan cooled motor and an 8 GPM pump, the SP-10 delivers high compaction ratios in detachable steel containers from 2 to 44 cubic yards.

*Patents applied for

RUGGED CONSTRUCTION

Heavy duty reinforced steel plate and channel are used in the construction of this Station-Pak to provide a machine that will stand up to severe service. See specification sheet for details.

OPTIONS

SONAR CYCLE CONTROL SYSTEM

Provides automatic operation on chute fed applications.

DEODORIZER SPRAY SYSTEM

Disinfects and deodorizes.

FULL CONTAINER WARNING SYSTEM

Signals when container is getting full.

HOPPERS

To extend capacity of charging box.

CONTAINERS

A full range of sizes and types from 2 to 44 cubic yards to work with Cobey or other collection vehicles.

COMPLETE LINE OF
*Refuse compaction and
collection equipment*



Sold and serviced by:

Cobey
REFUSE EQUIPMENT

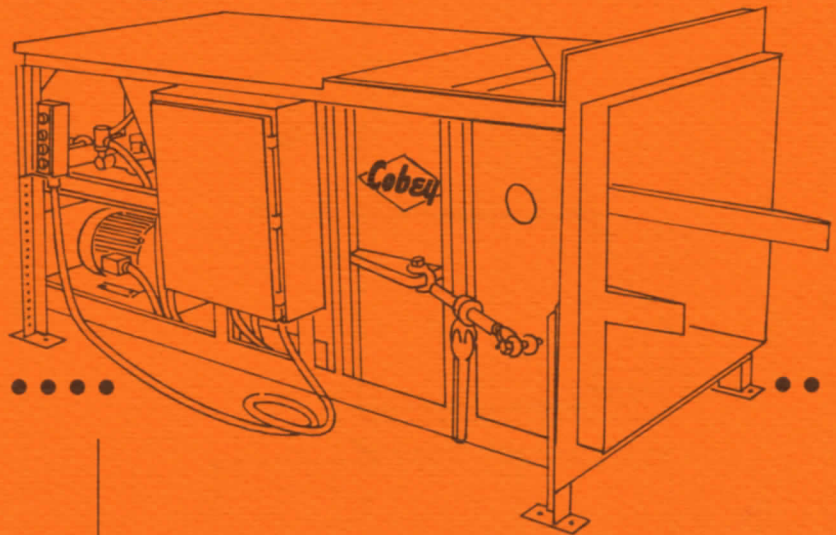
PERFECTION-COBEY CO. • GALION, OHIO 44833

A DIVISION OF
Harsco
CORPORATION

FORM NO. SP-10 PRINTED IN U.S.A.

Cobey STATION-PAK

SPECIFICATIONS



SIZE:

1.1 Cubic Yards

ELECTRICAL EQUIPMENT:

ELECTRIC MOTOR:5 HP TEFC,
208-220/440 Volt, 3 phase, 60 cycle

TRANSFORMER: .Handles common voltages—
208, 220, 230, 240, 440, 460 and 480

ELECTRIC CONTROL VOLTAGE:110 Volts

PANEL BOX:

All circuits fused for protection
Allen Bradley relays
Weatherproof panel box
Circuits color and number coded

CONTROLS:.....Control box factory wired to
10 foot cable Control buttons: stop, start,
retract and key operated packout

HYDRAULIC EQUIPMENT

HYDRAULIC PUMP:

Capacity.....8 GPM
Packing pressure.....1,400 PSI
Packout pressure.....1,800 PSI

HYDRAULIC CYLINDER:

Double acting with steel piston rings

OIL TANK:

Capacity.....13 gallons
Oil filter—100 mesh with reuseable bronze
cartridge Oil filter gage—shows when filter
needs cleaning, Visual Oil level indicator

RELIEF VALVES:

On all circuits to prevent overload damage

PERFORMANCE CHARACTERISTICS:

CYCLE TIME:.....25 Seconds

COMPACTION FORCE:.....22,620 pounds

BLADE PENETRATION INTO CONTAINER:
10 inches

CHARGING BOX:

BLADE DIMENSIONS.....37" wide x 29½" high

BODY OPENING REQUIRED:
39" wide x 36" high

CHARGING BOX DIMENSIONS: depth—33¾"
length—30"
width—37¼"

CONSTRUCTION:

FLOOR AND SIDES OF CHARGING BOX:
¾" steel plate

PACKING BLADE FACE:.....¾" steel plate

PACKING BLADE SLIDE GUIDES:
3", 7.1 pound channel

TOP COVER:.....14 gage steel plate

OVERALL DIMENSIONS:

LENGTH: 98" WIDTH: 44⅝"

HEIGHT, LESS HOPPER: 46⅞"
fits dock heights from 40½" to 54¼" with leg
adjustment

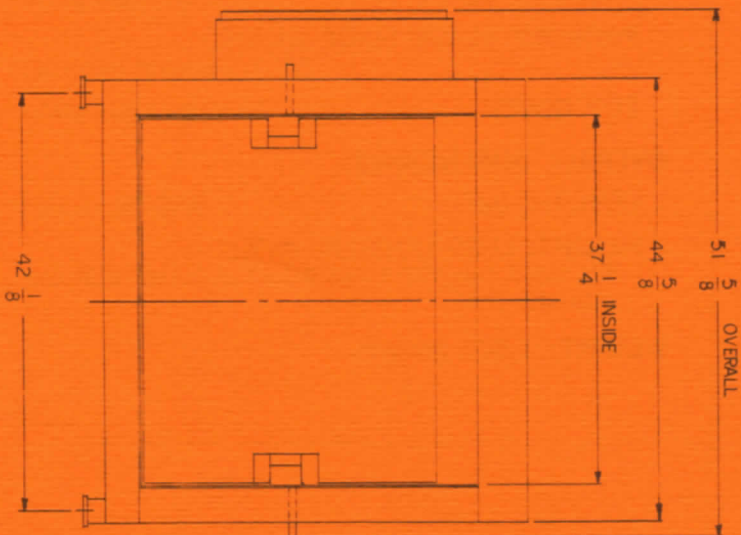
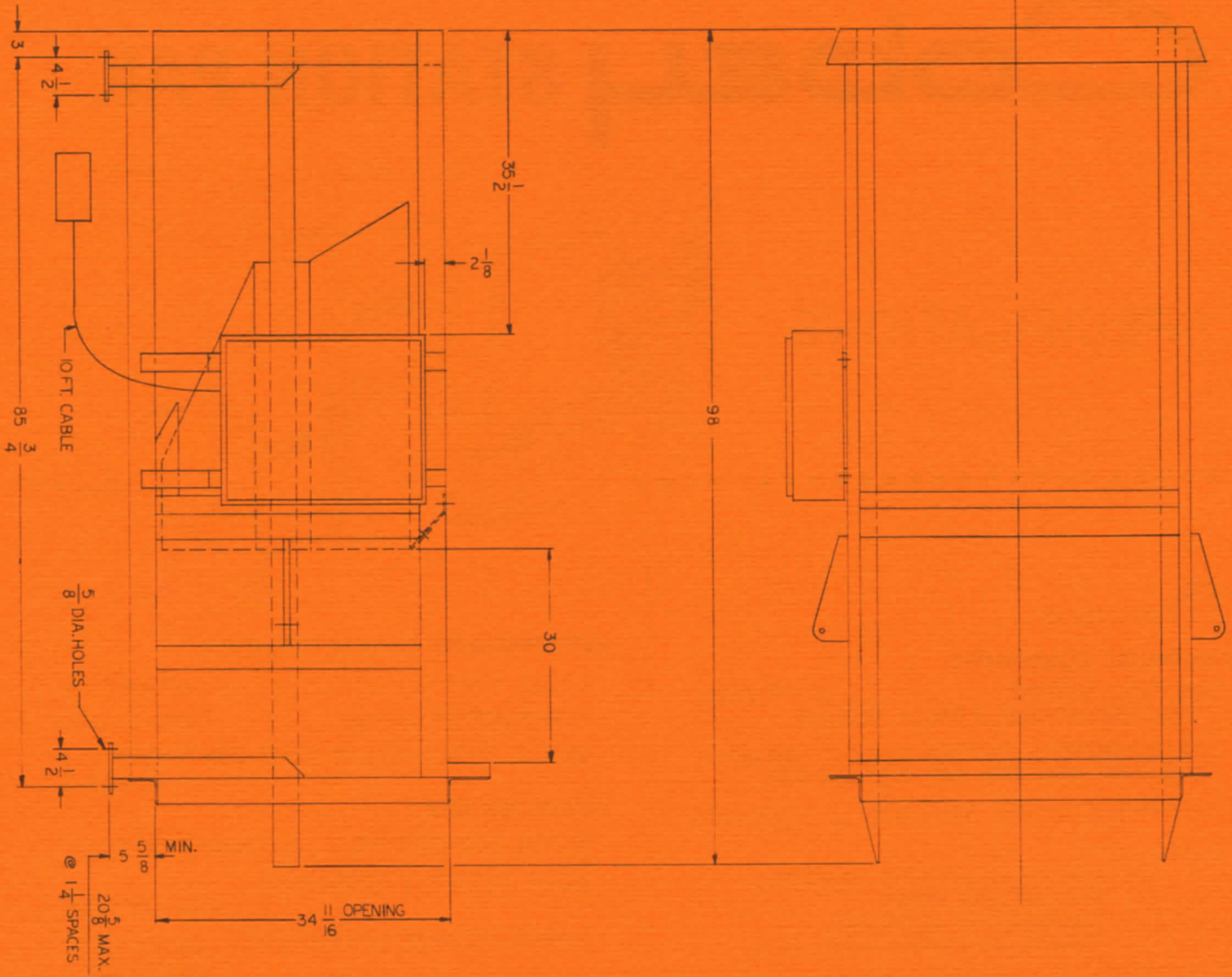
WEIGHT: 1,800 pounds

Cobey

REFUSE EQUIPMENT

PERFECTION-COBEY CO. • GALION, OHIO 44833

A DIVISION OF
Harsco
CORPORATION



**Cobey Station-Pak
 Model SP-10
 Dimensional Data**