

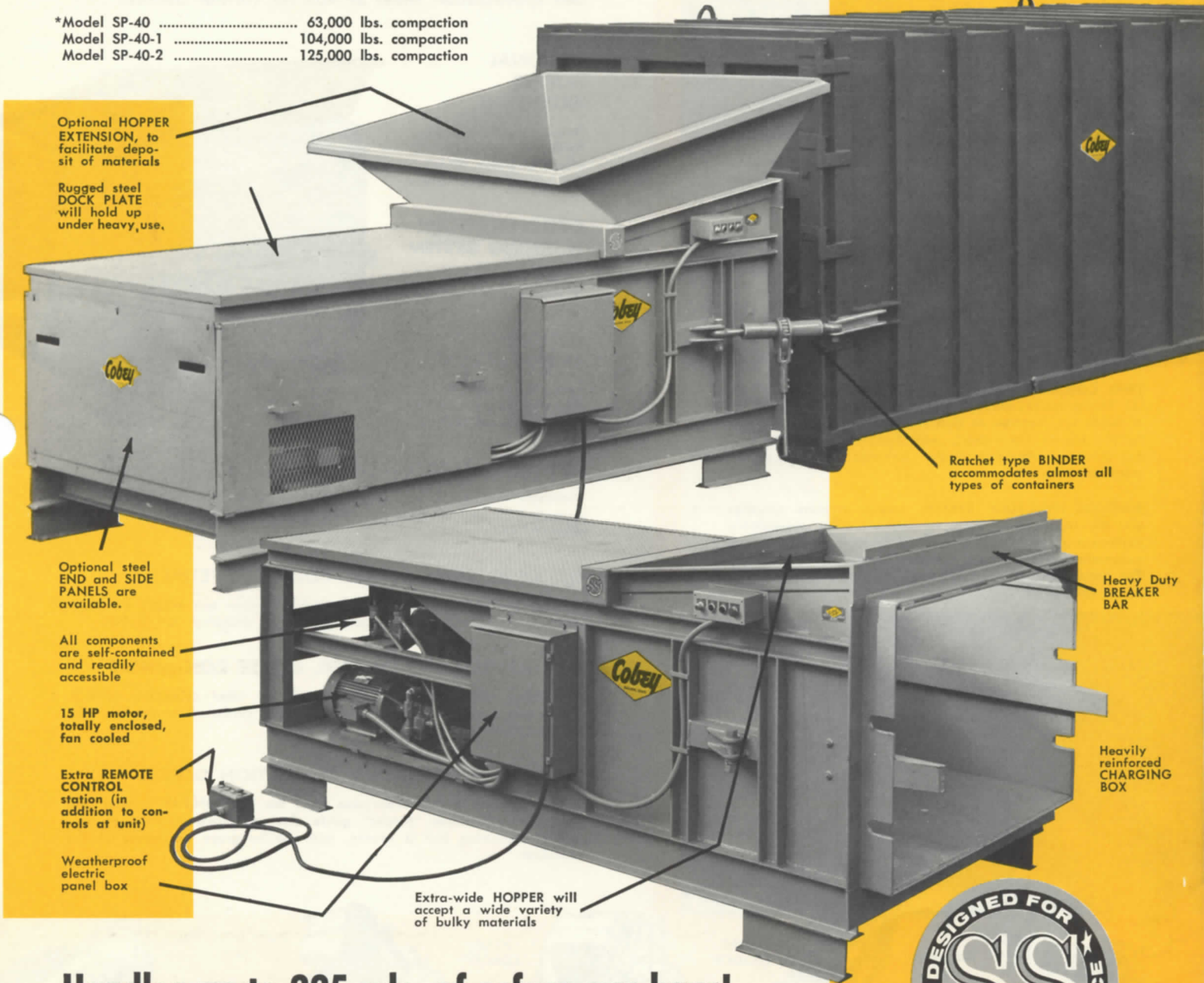
Cobey

MODEL SP-40 STATION-PAK

The biggest, toughest stationary packer in the industry, bar none! Up to a 125,000 lb. compaction force*

*Model SP-40 63,000 lbs. compaction
 Model SP-40-1 104,000 lbs. compaction
 Model SP-40-2 125,000 lbs. compaction

Specifically designed for the needs of large industry, complete shopping centers and entire communities. Compacts refuse into steel containers of all sizes.



Optional HOPPER EXTENSION, to facilitate deposit of materials

Rugged steel DOCK PLATE will hold up under heavy use.

Optional steel END and SIDE PANELS are available.

All components are self-contained and readily accessible

15 HP motor, totally enclosed, fan cooled

Extra REMOTE CONTROL station (in addition to controls at unit)

Weatherproof electric panel box

Extra-wide HOPPER will accept a wide variety of bulky materials

Ratchet type BINDER accommodates almost all types of containers

Heavy Duty BREAKER BAR

Heavily reinforced CHARGING BOX

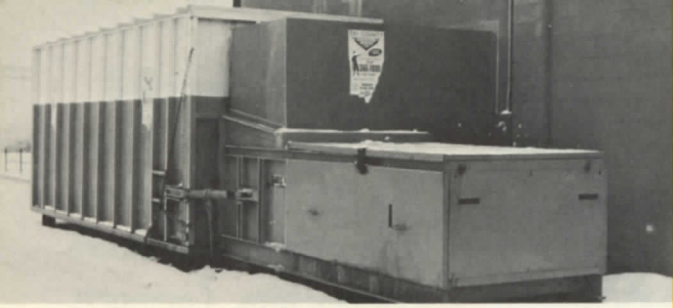


Handles up to 225 yds. of refuse per hour!

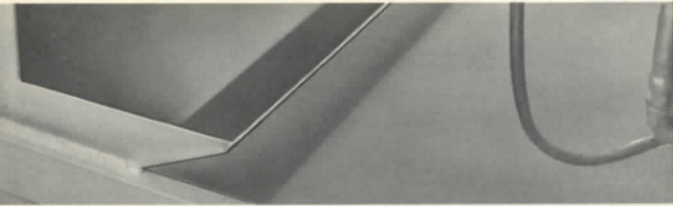
Now, from Cobey, a STATIONARY REFUSE PACKER built for the biggest refuse problems you've got . . . for the severe service you have to give this kind of equipment, year after year. The SP-40 has a super-size charging box that welcomes machinery skids, barrels and drums, old furniture, glass, scrap steel, paperboard . . . crushes it up to one-eighth its original size . . . and rams it neatly into almost anybody's steel container (including Cobey's FLEET-TAINER and LIFTAINER!).

(SEE REVERSE SIDE FOR COMPLETE PRODUCT DETAILS)

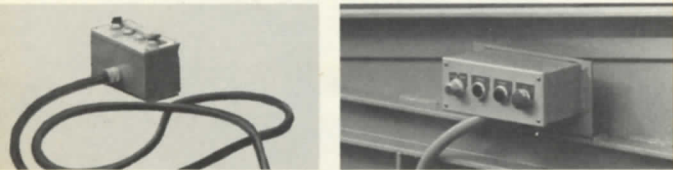
Crushes and compacts almost any refuse you can put in the hopper.



Here's a 100% self-contained STATION-PAK installation . . . even the entrance to the hopper is inside the building. Complete operation of unit is controlled from inside, eliminating one big avenue for employee pilferage (out the back door!).

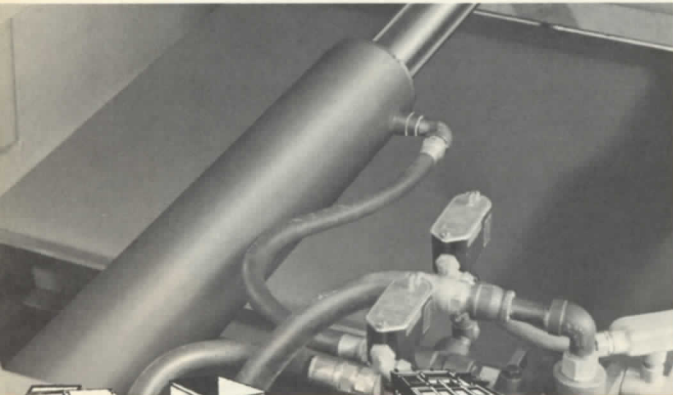


REDUCE ODOR AND FLY PROBLEMS. Design of charging box floor directs liquids into the container, drain or sump, not on the ground. All areas can be cleaned to meet the most rigid inspections.



TWO CONTROL STATIONS are standard on the SP-40: (1) Single/continuous cycle, Stop, Reverse, wired to 25' of cable for location as desired; (2) on the unit (for use by the Service Contractor), with Start, Stop, Reverse and Key-Operated Packout Cycle. Controls are completely weather-proof.

SUPERIOR HYDRAULIC SYSTEM. Sealed pressure switches are the big feature here, for better, more dependable performance and absolute minimum maintenance. Blade automatically retracts if a full stroke cannot be completed. The Cobey hydraulic system has no delicate linkages that invite failure.



All types of containers



FRONT LOADER



REAR LOADER



REAR HOISTING UNIT



ROLL-OFF

The SP-40 is one of five Cobey STATION-PAK models . . . one to meet your every compaction need!

A heavy duty hydraulic ram-type packer blade, a heavily constructed charging box, a completely self-contained power pack that eliminates the necessity for separate housing . . . a few of the quality Cobey features that mean dependable service from your STATION-PAK for years. Check these other Cobey features and options. See specification sheet SP-40S for further details.

OPTIONAL HOPPER EXTENSION

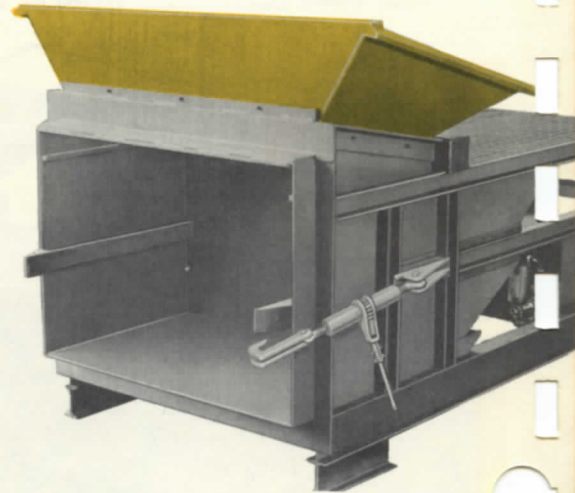
Helps reduce spillage, facilitates dumping, offers a wider target for hand-dumped refuse.

OPTIONAL "FULL" WARNING SYSTEM

Signals when container is reaching full point.

OPTIONAL CONTAINER DUMPER

Takes the work out of dumping heavy containers into STATION-PAK.



OPTIONAL DEODORIZER SPRAY SYSTEM

Disinfects and deodorizes hopper and charging box, assures sanitary operation of unit at all times, regardless of the type of refuse being disposed of.

OPTIONAL SONAR CYCLE CONTROL SYSTEM

If your STATION-PAK is to be chute-fed, Cobey can supply an automatic operation system that activates when charging box is full.

FULL ASSORTMENT OF STEEL REFUSE CONTAINERS

For Cobey LIFTAINER or FLEET-TAINER, or other collection vehicles, Cobey can supply containers up to 44 cubic yards, all compatible with the STATION-PAK system.

FOOLPROOF CONTAINER SEPARATION DEVICE

When container is full, separation from the STATION-PAK is easy and safe. Cobey's unique "flipper" guide channels make insertion of container restraining bar a breeze, with no hang-ups on refuse in the container.

Cobey

REFUSE EQUIPMENT

PERFECTION-COBEY CO. • GALION, OHIO 44833

A DIVISION OF
Harsco
CORPORATION

Form No. SP-40

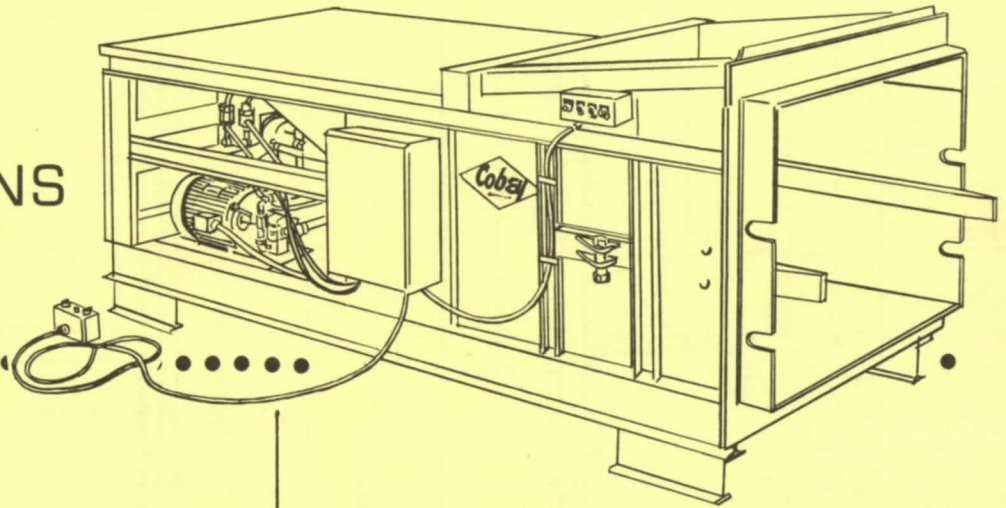
Printed in U. S. A.

Sold and serviced by:

Cobey STATION-PAK

MODEL SP-40

SPECIFICATIONS



SIZE:

3.7 Cubic Yards

ELECTRICAL EQUIPMENT:

ELECTRIC MOTOR: 15 HP TEFC,
208-220/440 Volt, 3 phase, 60 cycle

TRANSFORMER: .. Handles common voltages —
208, 220, 230, 240, 440, 460 and 480

ELECTRIC CONTROL VOLTAGE: 110 Volts

PANEL BOX:

All circuits fused for protection
Allen Bradley relays
Weatherproof panel box
Circuits color and number coded

CONTROLS: Control box factory wired to
25 foot cable Control buttons: stop, start, re-
tract and key operated packout

HYDRAULIC EQUIPMENT

HYDRAULIC PUMP:

Capacity 18 GPM
Packing pressure 1800 PSI
Packout pressure 2200 PSI

HYDRAULIC CYLINDER:

Double acting with steel piston rings

OIL TANK:

Capacity 30 gallons
Oil filter — 100 mesh with reuseable bronze
cartridge Oil filter gage — shows when filter
needs cleaning, Visual Oil level indicator

RELIEF VALVES:

On all circuits to prevent overload damage

PERFORMANCE CHARACTERISTICS:

CYCLE TIME: 40 Seconds

COMPACTION FORCE: 62,830 pounds

BLADE PENETRATION INTO CONTAINER:
12 $\frac{1}{4}$ inches

CHARGING BOX:

BLADE DIMENSIONS 60" wide x 35 $\frac{3}{4}$ " high

CHARGING BOX DIMENSIONS: depth — 45"
length — 48"
width — 60 $\frac{1}{4}$ "

BODY OPENING REQUIRED:

63 $\frac{1}{2}$ " wide x 45" high

CONSTRUCTION:

FLOOR AND SIDES OF CHARGING BOX:
 $\frac{3}{8}$ " $\frac{1}{4}$ " steel plate

PACKING BLADE FACE: $\frac{3}{8}$ " steel plate

PACKING BLADE SLIDE GUIDES:
4", 13.8 pound channel

TOP COVER: $\frac{1}{8}$ Diamond Plate

OVERALL DIMENSIONS:

LENGTH: 162 $\frac{15}{16}$ " WIDTH: 68 $\frac{3}{4}$ "

HEIGHT, LESS HOPPER: 65 $\frac{7}{8}$ "
Dock Height: 51 $\frac{3}{4}$ "

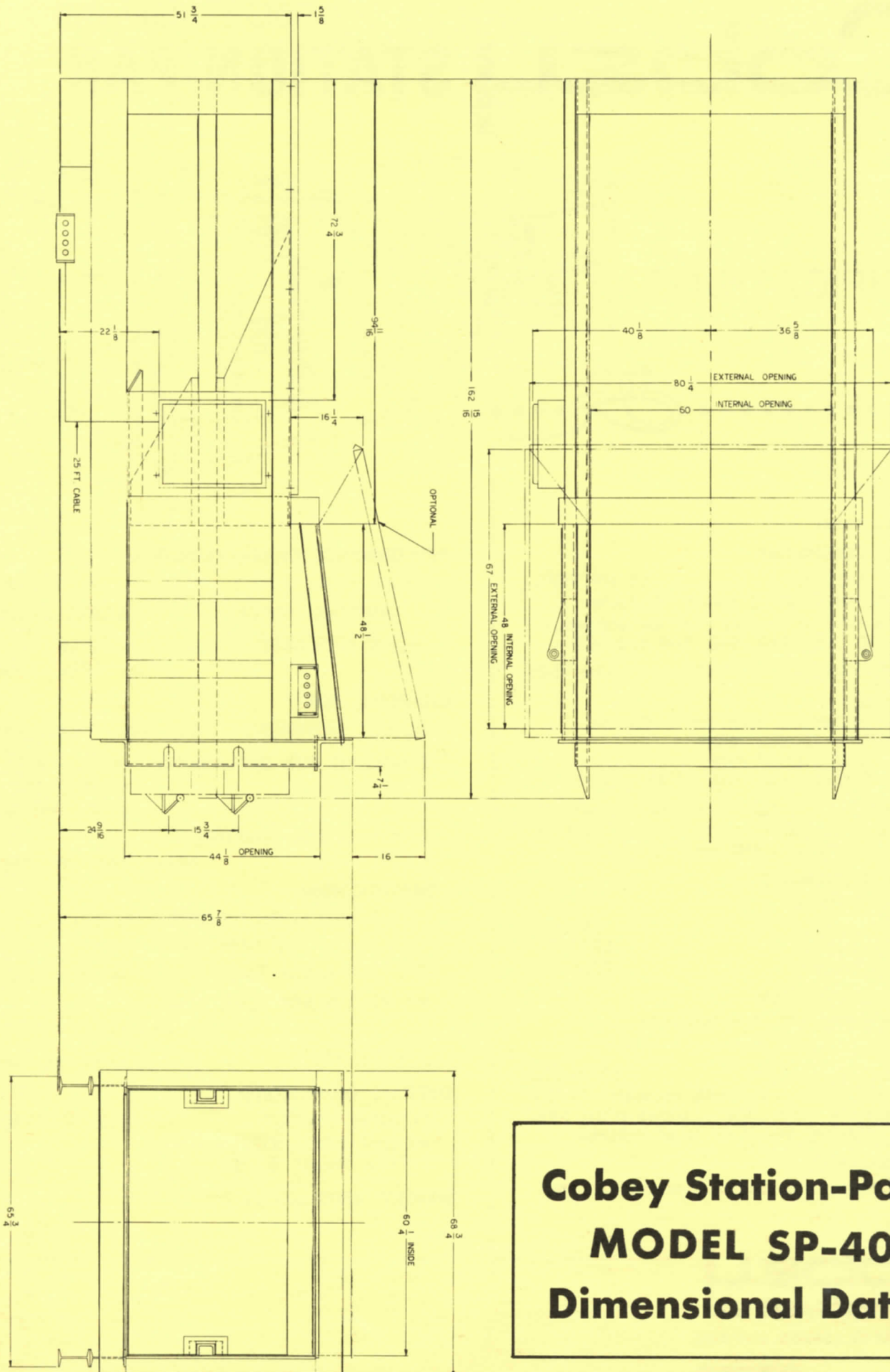
WEIGHT: 8500 pounds

Cobey

REFUSE EQUIPMENT

PERFECTION-COBEY CO. • GALION, OHIO 44833

A DIVISION OF
Harsco
CORPORATION



Cobey Station-Pak
MODEL SP-40
Dimensional Data