



Crane Carrier Company

LEADING THE REFUSE INDUSTRY  
WITH INNOVATIVE PRODUCTS SPECIFICALLY  
DESIGNED, QUALITY BUILT AND DEDICATED  
TO ONE PURPOSE . . . REFUSE SERVICE

# INTEGRATED REAR LOADER



TO INCREASE  
YOUR PRODUCTIVITY . . .

# OWN THE IRL AND

## PROVEN CONCEPT ... PROVEN SUCCESS ...

The same concept and body design that has for years been outperforming typical "bolt-together" vehicles in the tough world of commercial front loaders is now here as a rear loader. The CCC Integrated Rear Loader provides superior residential collection, service and life cycle.

## COMPONENTS TIME TESTED AND PROVEN ...

• Cummins • Detroit • Caterpillar • Allison • Spicer • Eaton • Rockwell • Hendrickson • Ridewell . . . The CCC proven concept features proven components, manufacturers that have proven track records in the refuse industry, combined with the integrated design, make the IRL outlive, outperform and outproduce its competition. And the simplicity of the integrated design insures reliability.

## RELIABILITY . . .

Total vehicle design means that all of the product is designed, engineered and built for the singular purpose of performing in the punishing requirements of the refuse industry...and succeeding. Reliability is simplicity, reliability is fewer parts, reliability is total product planning, reliability is total manufacturer's support and responsibility. **Reliability is the Crane Carrier Integrated Rear Loader.**

## GREATER PRODUCTIVITY...MORE PROFIT...

Greater productivity and more profit result from the many advantages designed into the IRL. Advantages such as low entry cab, lower loading height, tighter turns, larger hopper, fewer packing cycles, faster reload time, quicker cycle time, automatic tailgate latches and live power hydraulics, add up over the hours, days and weeks to higher bottom line profits.

## BIGGER LEGAL PAYLOADS . . .

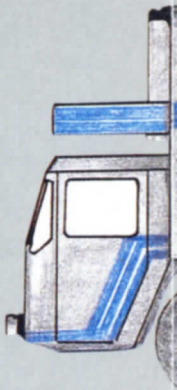
Because the IRL weighs less when you start, and because the IRL gives you **BALANCED LOADING** through weight transfer to the front axle, the IRL delivers bigger legal payloads than typical "bolt-together" trucks and rear loader bodies.

## LESS MAINTENANCE COSTS . . .

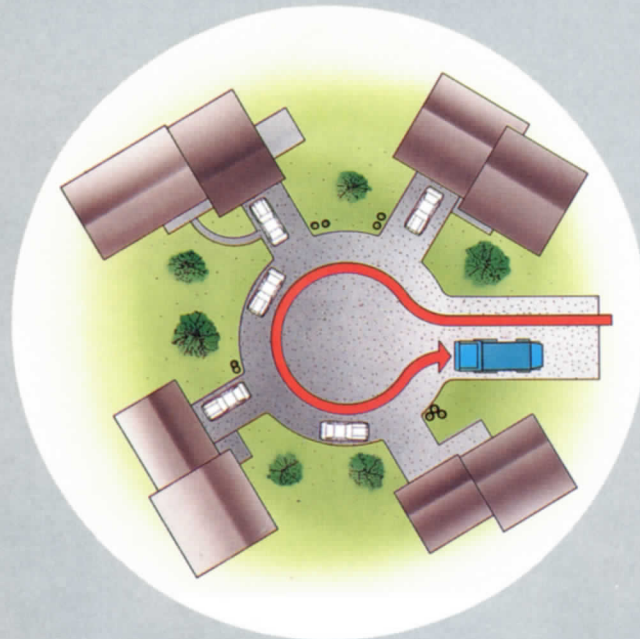
Because there is less to maintain, there is less maintenance cost. The integrated design eliminates truck frame rails and crossmembers. The cylindrical body design removes the need for the expensive and heavy welded-on substructure and vertical supports typical of "bolt-on bodies." The cylindrical body actually gains strength from its curved sides and provides a smooth surface for compaction and discharge of material. This simple design, coupled with **BALANCED LOADING** to eliminate overloading major components, assures less maintenance and fewer costly repairs.

## BALANCED LOADING

Control of the total design allows the tailgate to be positioned to place weight over the rear axle, instead of behind it. In addition, major components are designed and constructed to fit locations that allow for best weight distribution of the entire vehicle. With its front axle located under the body, maximum payload transfer to the front axle is assured, resulting in positive steering control, greater legal payloads and **BALANCED LOADING**.



# BA



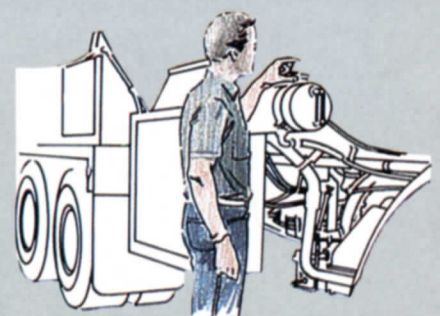
## BETTER MANEUVERABILITY

The IRL's tight turning radius and excellent cornering ability greatly reduce the number of trips. Curb-side loading is difficult to do without a body, but it's easy with the IRL.

## ADDITIONAL EXCLUSIVE

### WALK-UP SERVICE

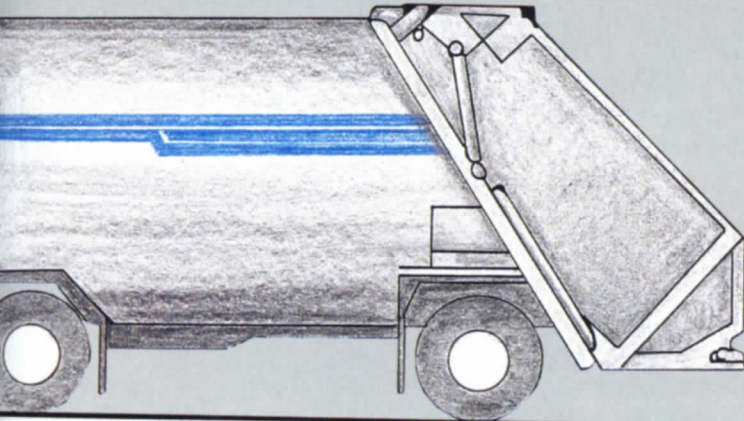
All components are located and positioned for easy maintenance and repair. Engine, transmission and accessories are readily accessible — routine checks and preventative maintenance schedules are easier to implement because of the convenience of "walk-up service."



### LOW MAINTENANCE

The IRL's simple design is actually a major advantage. The cab design is quiet and comfortable. More controls are located in the product area, making it easier to operate from the IRL's operator's position.

# ADVANTAGES



## BALANCED LOADING



## TOTAL VEHICLE DESIGN

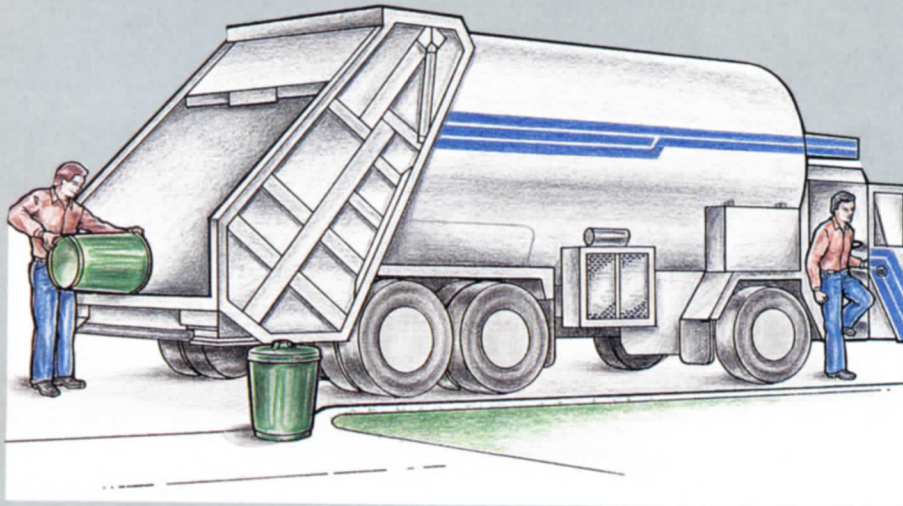
The IRL is designed and built as one complete unit. Components and accessories are located where they are most effective . . . for best weight distribution and serviceability.

The cylindrical body, strategically reinforced, eliminates the need for frame rails and crossmembers reducing excess weight and obstructions that interfere with component placement.

All systems are designed and installed by one manufacturer at one location . . . the CCC factory. This means no confusion between chassis and body company responsibility, no wasted time in shipment for mounting . . . and no pieced-together components or unauthorized modifications of your truck chassis.

## MANEUVERABILITY

shorter  
makes  
easier and  
reduces back-  
e-sacs, dif-  
service  
cking, are  
the nimble



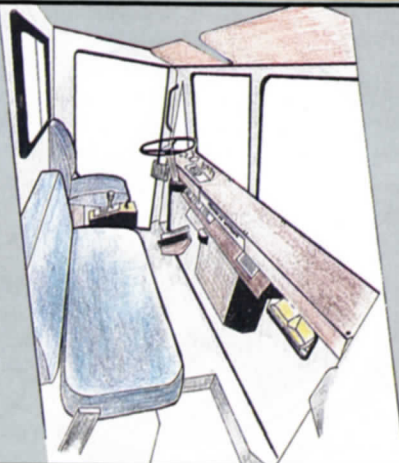
## GREATER PRODUCTIVITY

Loading is fast and easy with the nimble IRL. The larger hopper, quicker cycle time and lower loading height translate to faster route time. With its low entry walk-thru cab, coupled with time-saving options such as dual steering and bi-fold doors, greater productivity is realized.

## INTEGRATED REAR LOADER FEATURES

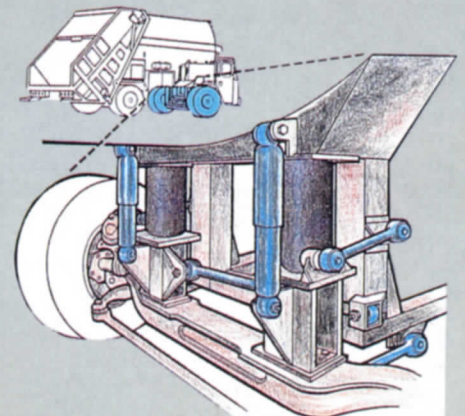
### WALK-THRU CAB . . .

concept allows for virtually unrestricted flexibility in design. The insulated cab heater, cooler, roomier, comfortable, and the console located for maximum visibility. Since it is remote from engine heat and noise, the environment provides a low stress environment.



### LOAD CUSHION FRONT SUSPENSION

Total vehicle design permits the use of rugged load cushion suspension. This dependable tough suspension has been in use for over 50 years in heavy off-road equipment and is now brought to the refuse industry with the IRL. Springs and spring shackles are eliminated along with the costly repairs and down-time they cause.





## CCC HIGH COMPACTION BODY AND TAILGATE

The CCC Integrated Rear Loader is available in single and tandem axle models. With sizes ranging from 18 to 32 cubic yards, there is an IRL just right to suit your needs.

The IRL tailgate incorporates a simple packing mechanism designed to keep stress and forces in line. Packing blade cylinders, blade, tailgate, body, and compaction panel pivots are all "in-line," eliminating complex structural stresses, along with the torture, the racking and the metal fatigue that goes with them. Unlike other tailgates, breaking, binding and wedging are not problems with the IRL because there are no high wear rollers, open slots, exposed links or outside cylinders. The packing mechanism is guided by easily accessible, simple tracks and slides.

## TAILGATE FEATURES

- Higher Compaction Force — 106,000 lbs. force means higher compaction densities
- Larger Hopper Volume — 3.6 cu. yd. TBEA rating means fewer compaction cycles
- Lower Loading Height — 34 inches above ground\* means faster, easier loading
- Larger Hopper Opening — 82" wide x 66" high means easier handling of bulky objects
- Quicker Cycle Time — 25-second cycle, 10-second reload means faster route time

***With Automatic Tailgate Latches — Actuated from front of body means less time at landfill***

\* With standard tires

## OTHER IRL STANDARD FEATURES

- Low Entry Walk-Thru Cab
- Front Shock Absorbers
- Modular Instrument Panel
- Manual Reset Circuit Breakers
- Transmission Shift Shock Eliminator
- Crankshaft-Driven Pump
- Pump-On Overspeed Switch
- Body Side Door
- Return Line Filter
- Suction Line Shutoff
- Hydraulic Sight Level Gauge
- Magnetic Suction Strainer
- Cushioned Compaction Cylinders
- O-Ring Seal Hydraulic Fittings
- Shock Mounted Taillights
- Back-Up Alarm
- ANSI Z245.1 Compliance



**Crane Carrier Company**  
 P.O. Box 582891  
 Tulsa, Oklahoma 74158  
 (918) 836-1651