

# IRL

## INTEGRATED REAR LOADER



Illustration representative of model, but not necessarily of these specifications.

# Base Model Specifications

## 20 CU. YD. SINGLE AXLE HIGH COMPACTION

### MODEL IRL20-S

Complete refuse vehicle...built by one manufacturer.  
An innovative concept...using proven components.

### GENERAL DATA

#### DIMENSIONS

WHEELBASE, ins.	143
WEIGHT, est. lbs.	24,000
LENGTH, overall, ft.-ins.	26-4
HEIGHT, ft.-ins.	11-6
WIDTH, overall, ins.	96

#### BODY

VOLUME, cu. yds.	20
COMPACTION RATIO, lbs./cu. yds.	1,000
BODY SHAPE	Cylindrical
BODY WELDING	Full
CONSTRUCTION MATERIAL, Steel	
• Sides, ga., psi	10 - 80,000
• Floor, ga., psi	10 - 80,000
• Roof, ga., psi	12 - 80,000
• Rear Apron, in., psi	1/4 - 100,000

#### EJECTION SYSTEM

• Type	Full sweep
• Method	Hydraulic telescopic cylinder
• Controls	Lever operated valve
• Location	Left front of body
SIDE DOOR	
• Location	Left front of body
• Size, w x h, ins.	31 x 34

#### HYDRAULIC SYSTEM

PUMP, Type	Gear with dry valve
• Size, gpm @ 1000 rpm	35
• Material	Cast iron
• Bearings	Roller
P.T.O.	Crankshaft drive
SYSTEM RPM, approx.	1,500
SYSTEM FLOW, gpm	46
SYSTEM PRESSURE, psi	2,500
RESERVOIR, gals.	55

#### TAILGATE

HOPPER SIZE, cu. yds.	3.6
LOADING HEIGHT, above road, ins.	34
LOAD OPENING, w x h, ins.	82 x 66

#### CONTROLS

• Operation	Semiautomatic
• Type	Hydraulic release
• Actuation	Dual lever, one-hand
• Location	R.H. tailgate side

CYCLE TIME, full cycle, sec.	25
RELOAD TIME, secs.	10

#### TAILGATE RAISE

Automatic, hydraulic lock

#### TAILGATE CONSTRUCTION

• Hopper, ins., psi	3/16 - 100,000
• Lower Sides, ins., psi	3/16 - 80,000
• Upper Sides, ga., psi	12 - 45,000
COMPACTION FORCE, lbs. thrust	
• lbs./sq. in., packer face	106,000
	47

#### CYLINDERS

Double acting, chrome-plated rods	All
T.G. LATCH AND RAISE, dia., ins.	3
T.G. COMPACTION, cushioned, hardened rods, dia., ins.	6
T.G. BLADE, cushioned, hardened rods, dia., ins.	5
EJECTION, telescopic, 3 stage, ins.	6

#### POWER SYSTEM

ENGINE	CUMMINS 6CT8.3*
• Horsepower	250
• Governed Speed, r.p.m.	2400
• Lube Oil Filter	Full flow
TRANSMISSION	ALLISON MT6530R*
• 5 speeds forward, 1 reverse	
• Filter, Spin on	Remote
• Oil Cooler	Water to oil
PROPELLER SHAFTS	1710 HD
RADIATOR, Remote, 3 Row Serpentine Core, sq. ins.	1200
AIR CLEANER	intake above cab, 14" Donaldson
EXHAUST	Vertical
FUEL TANK, gal.	50

#### AXLES, SUSPENSION

FRONT AXLE, Eaton EFA-20F4, cap., lbs.	20,000
FRONT SUSPENSION, CCC, cap., lbs.	20,000
REAR AXLE, Eaton 2610Ss, cap., lbs.	26,000*
• Ratio	5.25:1
REAR SUSPENSION, Reyco, 102cc, lbs.	26,000*
WHEELS, front and rear	20" Cast spoke
RIMS, front, ins.	20 x 10
rear, ins.	20 x 8
TIRES, front, Goodyear	14/80R20
rear, Goodyear Radial	10.00R20

#### BRAKES

FRONT, S-CAM, ins.	16.5 x 6
REAR, S-CAM, ins.	16.5 x 7
RESERVOIR, cap., cu. ins.	5,160
AIR COMPRESSOR, Midland, C.F.M.	16
PARKING, rear axle	Spring loaded

#### STEERING

DRIVERS STATION	Left Side
TYPE, Sheppard	Integral gear S592
• Cap., lbs.	20,000
• Turning radius, wall to wall, (approx.) ft.	27

#### ELECTRICAL

SYSTEM TYPE	12 V. Negative Ground
ALTERNATOR, Delco, 27 SI, amps	80
BATTERIES, maintenance free, 12 volt	3
• Total cold cranking amps, CCA	2,250

Specifications subject to change without notice.

\* Optional components available



THE REFUSE VEHICLE SPECIALISTS

## STANDARD EQUIPMENT

### ■ CAB

LEFT HAND DRIVER'S STATION  
 LOW ENTRY FIXED CAB  
 ALL WELDED ALUMINUM  
 ALL TINTED FLAT SAFETY GLASS  
 AIR OPERATED WINDSHIELD WIPERS WITH WASHERS  
 BENCH TYPE DRIVER'S AND PASSENGER'S SEAT  
 RETRACTABLE SEAT BELTS  
 L.H. AND R.H. SUNVISORS  
 FRESH AIR HEATER WITH RECIRCULATING HEATER AND DEFROSTER

DUAL STAINLESS REAR VIEW MIRRORS  
 16" X 6" WITH 8.5" R.H. CONVEX SPOT  
 ROLL DOWN WINDOWS IN DOORS  
 REAR VIEWING WINDOW  
 ELECTRICAL SPEEDOMETER  
 ELECTRICAL TACHOMETER W/ HOURMETER  
 DUAL AIR PRESSURE GAUGE  
 MODULE PANEL W/REPLACEABLE GAUGES  
 VOLTMETER, ELECTRICAL OIL PRESSURE  
 WATER TEMPERATURE AND FUEL

### ■ ELECTRICAL

MANUAL RESET CIRCUIT BREAKERS  
 COLOR CODED WIRING  
 EXTERIOR BODY WIRING INSTALLED IN CONDUIT W/WATERPROOF JUNCTION BOXES  
 P.T.O. "ON" INDICATOR LIGHT  
 PUMP ENGAGED OVERSPEED SWITCH  
 SINGLE HEADLIGHTS  
 FRONT AND REAR TURN SIGNALS  
 IDENTIFICATION AND CLEARANCE LIGHTS  
 SHOCK MOUNTED TAIL AND CLEARANCE LIGHTS  
 DOME LIGHT IN CAB  
 HAZARD WARNING FLASHER

SINGLE ELECTRICAL HORN  
 WARNING LIGHT AND BUZZER FOR:  
 • LOW AIR AND OIL PRESSURE  
 • HIGH WATER TEMPERATURE  
 INDICATOR LIGHT FOR:  
 • PARKING BRAKE  
 • TRANSMISSION HIGH TEMPERATURE  
 • TRANSMISSION NEUTRAL  
 30 AMP RADIO WIRE  
 SPARE SWITCH - DASH MOUNTED IN CAB  
 BACK-UP ALARM  
 BACK-UP LIGHT IN REAR CLUSTER

### ■ BODY

CRANKSHAFT MOUNTED DRY VALVE PUMP  
 RETURN LINE FILTER - REPLACEABLE ELEMENT  
 CONTROLLED FLOW TAILGATE CYLINDER  
 HYDRAULIC SIGHT GAUGE  
 BODY SIDE DOOR

AUTOMATIC HYDRAULIC TAILGATE LATCH  
 O-RING SEAL HYDRAULIC FITTINGS  
 CHROME PLATED CYLINDER RODS  
 CUSHIONED TAILGATE CYLINDERS  
 ANSI 2 245.1 COMPLIANCE

### ■ PAINT

WHITE, POLYURETHANE ENAMEL:  
 CAB, BODY, BUMPER, FENDERS, WHEELS, AIR  
 CLEANER AND BACK OF EJECTOR PANEL

### ■ MISCELLANEOUS

WHEEL OIL SEALS - ALL AXLES  
 MUD FLAPS REAR OF FRONT AND FORWARD OF REAR  
 WHEELS  
 GATE TYPE TRANSMISSION SHIFT CONTROL  
 WILLIAMS AIR THROTTLE CONTROL  
 AIR RESTRICTION INDICATOR - AIR CLEANER MOUNTED  
 TOW LOOPS, FRONT AND REAR

## OPTIONAL COMPONENTS

### ■ ENGINE

(VARIOUS HORSEPOWER)  
 CUMMINS - 6CTB.3  
 CAT-3116

### ■ TRANSMISSION

MANUAL, CONSULT FACTORY

### ■ WHEEL

DISC, STEEL, FRONT AND REAR  
 DISC, ALUMINUM, REAR

### ■ REAR SUSPENSION

REYCO 102C 30,000#

### ■ REAR AXLE

EATON 301055 30,000#  
 ROCKWELL RS26-180, 26,000#  
 ROCKWELL RS360-180, 30,000#

### ■ TIRE

FRONT, 315/80R22.5, 385/65R22.5, 425/65R22.5  
 REAR, VARIOUS, TUBE AND TUBELESS RADIALS

### ■ CAB

LEFT AND RIGHT DRIVING POSITIONS  
 BIFOLD DOORS, L.H. AND R.H.  
 AIR CONDITIONING  
 DRIVER SEAT AIR RIDE OR T BAR  
 PASSENGER SEAT, 2-MAN OR 3-MAN BENCH  
 AIR HORN  
 FAN, DASH MOUNTED  
 FIRE EXTINGUISHER  
 NEUTRAL COMMAND SYSTEM

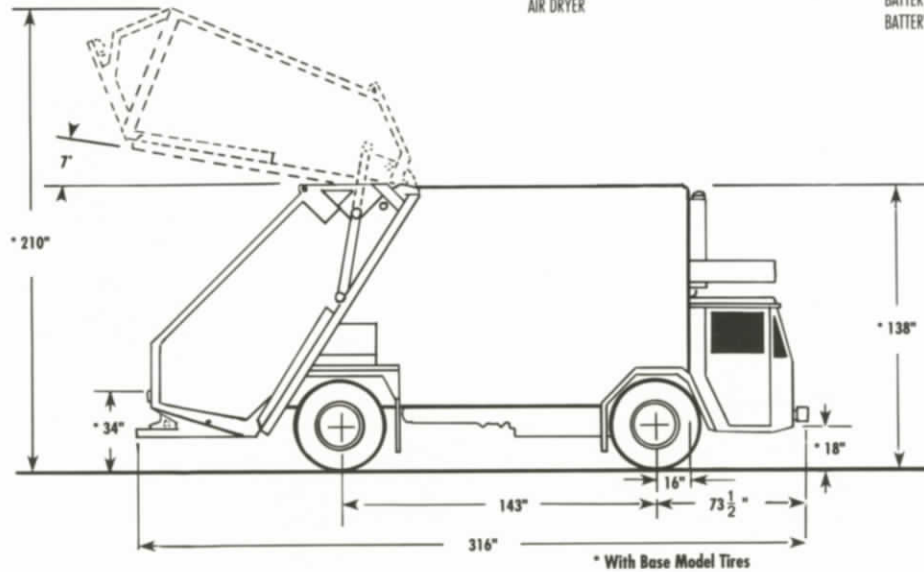
### ■ MISCELLANEOUS

BLOCK HEATER  
 ETHER START AID  
 FUEL/WATER SEPARATOR  
 TRANSMISSION OIL COOLER  
 AIR DRYER

### ■ BODY

REEVING CYLINDER CONTAINER MECHANISM  
 ROLL BAR CONTAINER MECHANISM  
 VALVE AND CONTROLS ONLY, FOR MECHANISM  
 RESIDENTIAL CART TIPPER(S)  
 DOCK HEIGHT CONTROLS  
 HOPPER FLOOR LINER  
 TAILGATE SIDE LINERS  
 L.H. AND R.H. SIGNAL BUZZER  
 DUPLICATE STOP AND TURN SIGNALS  
 HOPPER FLOODLIGHT  
 AMBER STROBE LIGHT

AIR DRAIN VALVE, AUTOMATIC  
 SLACK ADJUSTERS, BRAKE, AUTOMATIC  
 ALCOHOL INJECTOR  
 HAND CONTROL VALVE, BRAKE  
 BATTERY (IES), ADDITIONAL  
 BATTERY DISCONNECT SWITCH



Specifications subject to change without notice.



CRANE CARRIER COMPANY, P.O. BOX 582891, TULSA, OK. 74158 (918) 836-1651

# Base Model Specifications

# IRL

## INTEGRATED REAR LOADER



Illustration representative of model, but not necessarily of these specifications.

## 28 CU. YD. TANDEM AXLE HIGH COMPACTION

### MODEL IRL28-T

Complete refuse vehicle...built by one manufacturer.  
An innovative concept...using proven components.

### GENERAL DATA

#### DIMENSIONS

WHEELBASE, ins.	184
WEIGHT, est. lbs.	29,000
LENGTH, overall, ft.-ins.	32-4
HEIGHT, ft.-ins.	11-6
WIDTH, overall, ins.	96

#### BODY

VOLUME, cu. yds.	28
COMPACTION RATIO, lbs./cu. yds.	1,000
BODY SHAPE	Cylindrical
BODY WELDING	Full
CONSTRUCTION MATERIAL, Steel	

- Sides, ga., psi 10 - 80,000
- Floor, ga., psi 10 - 80,000
- Roof, ga., psi 12 - 80,000
- Rear Apron, in., psi 1/4 - 100,000

#### EJECTION SYSTEM

- Type Full sweep
- Method Hydraulic telescopic cylinder
- Controls Lever operated valve
- Location Left front of body

#### SIDE DOOR

- Location Left front of body
- Size, w x h, ins. 31 x 34

#### HYDRAULIC SYSTEM

PUMP, Type	Gear with dry valve
• Size, gpm @ 1000 rpm	35
• Material	Cast iron
• Bearings	Roller
P.T.O.	Crankshaft drive
SYSTEM RPM, approx.	1,500
SYSTEM FLOW, gpm	46
SYSTEM PRESSURE, psi	2,500
RESERVOIR, gals.	55

#### TAILGATE

HOPPER SIZE, cu. yds.	3.6
LOADING HEIGHT, above road, ins.	34
LOAD OPENING, w x h, ins.	82 x 66

#### CONTROLS

- Operation Semiautomatic
- Type Hydraulic release
- Actuation Dual lever, one-hand
- Location R.H. tailgate side

CYCLE TIME, full cycle, sec.	25
RELOAD TIME, secs.	10

#### TAILGATE RAISE

Automatic, hydraulic lock

#### TAILGATE CONSTRUCTION

- Hopper, ins., psi 3/16 - 100,000
- Lower Sides, ins., psi 3/16 - 80,000
- Upper Sides, ga., psi 12 - 45,000

COMPACTION FORCE, lbs. thrust	106,000
• lbs./sq. in., packer face	47

#### CYLINDERS

Double acting, chrome-plated rods	All
T.G. LATCH AND RAISE, dia., ins.	3
T.G. COMPACTION, cushioned, hardened rods, dia., ins.	6
T.G. BLADE, cushioned, hardened rods, dia., ins.	5
EJECTION, telescopic, 4 stage, dia., ins.	7

#### POWER SYSTEM

ENGINE	CUMMINS 6CT8.3 *
• Horsepower	250
• Governed Speed, r.p.m.	2400
• Lube Oil Filter	Full flow
TRANSMISSION	ALLISON MT653DR *
• 5 speeds forward, 1 reverse	
• Filter, Spin on	Remote
• Oil Cooler	Water to oil
PROPELLER SHAFTS	1710 HD
RADIATOR, Remote, 3 Row Serpentine Core, sq. ins.	1200
AIR CLEANER	intake above cab, 14" Donaldson
EXHAUST	Vertical
FUEL TANK, gal.	50

#### AXLES, SUSPENSION

FRONT AXLE, Eaton EFA-20F4, cap., lbs.	20,000
FRONT SUSPENSION, CCC, cap., lbs.	20,000
REAR AXLE, DS402, cap., lbs.	40,000 *
• Ratio	5.29:1
REAR SUSPENSION, Hendrickson RS400, lbs.	40,000 *
WHEELS, front and rear	20" Cast spoke
RIMS, front, ins.	20 x 10
rear, ins.	20 x 8
TIRES, front, Goodyear	14/80R20
rear, Goodyear	10.00X20

#### BRAKES

FRONT, S-CAM, ins.	16.5 x 6
REAR, S-CAM, ins.	16.5 x 7
RESERVOIR, cap., cu. ins.	6880
AIR COMPRESSOR, Midland, C.F.M.	16
PARKING, rear axle	Spring loaded

#### STEERING

DRIVER'S STATION	Left Side
TYPE, Sheppard	Integral gear S592
• Cap., lbs.	20,000
• Turning radius, wall to wall, (approx.) ft.	32

#### ELECTRICAL

SYSTEM TYPE	12 V. Negative Ground
ALTERNATOR, Delco, 27 SI, amps	80
BATTERIES, maintenance free, 12 volt	3
• Total cold cranking amps, CCA	2,250

Specifications subject to change without notice.

\* Optional components available.



THE REFUSE VEHICLE SPECIALISTS

## STANDARD EQUIPMENT

### CAB

LEFT HAND DRIVER'S STATION  
 LOW ENTRY FIXED CAB  
 ALL WELDED ALUMINUM  
 ALL TINTED FLAT SAFETY GLASS  
 AIR OPERATED WINDSHIELD WIPERS WITH WASHERS  
 BENCH TYPE DRIVER'S AND PASSENGER'S SEAT  
 RETRACTABLE SEAT BELTS  
 L.H. AND R.H. SUNVISORS  
 FRESH AIR HEATER WITH RECIRCULATING HEATER AND DEFROSTER

DUAL STAINLESS REAR VIEW MIRRORS  
 16" X 6" WITH 8.5" R.H. CONVEX SPOT  
 ROLL DOWN WINDOWS IN DOORS  
 REAR VIEWING WINDOW  
 ELECTRICAL SPEEDOMETER  
 ELECTRICAL TACHOMETER W/ HOURMETER  
 DUAL AIR PRESSURE GAUGE  
 MODULE PANEL W/REPLACEABLE GAUGES  
 VOLTMETER, ELECTRICAL OIL PRESSURE  
 WATER TEMPERATURE AND FUEL

### ELECTRICAL

MANUAL RESET CIRCUIT BREAKERS  
 COLOR CODED WIRING  
 EXTERIOR BODY WIRING INSTALLED IN CONDUIT W/WATERPROOF JUNCTION BOXES  
 P.T.O. "ON" INDICATOR LIGHT  
 PUMP ENGAGED OVERSPEED SWITCH  
 SINGLE HEADLIGHTS  
 FRONT AND REAR TURN SIGNALS  
 IDENTIFICATION AND CLEARANCE LIGHTS  
 SHOCK MOUNTED TAIL AND CLEARANCE LIGHTS  
 DOME LIGHT IN CAB  
 HAZARD WARNING FLASHER

SINGLE ELECTRICAL HORN  
 WARNING LIGHT AND BUZZER FOR:  
 • LOW AIR AND OIL PRESSURE  
 • HIGH WATER TEMPERATURE  
 INDICATOR LIGHT FOR:  
 • PARKING BRAKE  
 • TRANSMISSION HIGH TEMPERATURE  
 • TRANSMISSION NEUTRAL  
 • INTERAXLE DIFFERENTIAL  
 30 AMP RADIO WIRE  
 SPARE SWITCH - DASH MOUNTED IN CAB  
 BACK-UP ALARM  
 BACK-UP LIGHT IN REAR CLUSTER

### BODY

CRANKSHAFT MOUNTED DRY VALVE PUMP  
 RETURN LINE FILTER - REPLACEABLE ELEMENT  
 CONTROLLED FLOW TAILGATE CYLINDER  
 HYDRAULIC SIGHT GAUGE  
 BODY SIDE DOOR

AUTOMATIC HYDRAULIC TAILGATE LATCH  
 O-RING SEAL HYDRAULIC FITTINGS  
 CHROME PLATED CYLINDER RODS  
 CUSHIONED TAILGATE CYLINDERS  
 ANSI Z 245.1 COMPLIANCE

### PAINT

WHITE, POLYURETHANE ENAMEL:  
 CAB, BODY, BUMPER, FENDERS, WHEELS, AIR  
 CLEANER AND BACK OF EJECTOR PANEL

### MISCELLANEOUS

LATERAL TORQUE RODS  
 WHEEL OIL SEALS - ALL AXLES  
 MUD FLAPS REAR OF FRONT AND FORWARD OF REAR  
 WHEELS  
 GATE TYPE TRANSMISSION SHIFT CONTROL  
 WILLIAMS AIR THROTTLE CONTROL  
 AIR RESTRICTION INDICATOR - AIR CLEANER MOUNTED  
 TOW LOOPS, FRONT AND REAR

## OPTIONAL COMPONENTS

### ENGINE

(VARIOUS HORSEPOWER)  
 CUMMINS - 6CT8.3, L-10  
 CAT-3116, 3306  
 DETROIT - 6L-71TA DDEC

### TRANSMISSION

MANUAL, CONSULT FACTORY  
 AUTOMATIC TRANSMISSION MT654, HT740RS

### WHEEL

DISC, STEEL, FRONT AND REAR  
 DISC, ALUMINUM, REAR

### REAR SUSPENSION

HENDRICKSON RS460, 46,000#  
 RIDEWELL 48K, 48,000#

### REAR AXLE

EATON DS451p, 45,000#  
 EATON DS461p, 46,000#  
 ROCKWELL RT-40-145, 40,000#  
 ROCKWELL RT-46-160, 46,000#

### TIRE

FRONT, 315/80R22.5, 385/65R22.5, 425/65R22.5  
 REAR, VARIOUS, TUBE AND TUBELESS

### CAB

LEFT AND RIGHT DRIVING POSITIONS  
 BIFOLD DOORS, L.H. AND R.H.  
 AIR CONDITIONING  
 DRIVER SEAT AIR RIDE OR T BAR  
 PASSENGER SEAT, 2-MAN OR 3-MAN BENCH  
 AIR HORN  
 FAN, DASH MOUNTED  
 FIRE EXTINGUISHER  
 NEUTRAL COMMAND SYSTEM

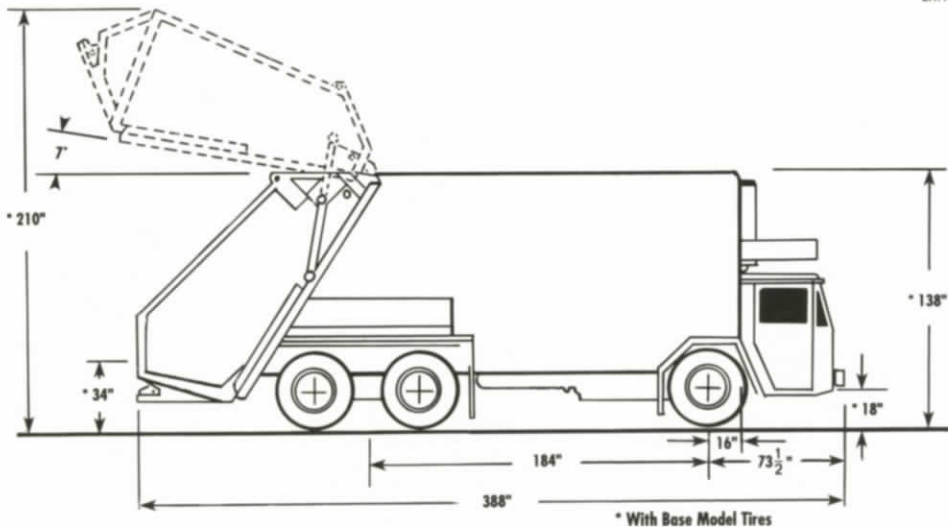
### MISCELLANEOUS

BLOCK HEATER  
 ETHER START AID  
 FUEL/WATER SEPARATOR  
 TRANSMISSION OIL COOLER  
 AIR DRYER

### BODY

REEVING CYLINDER CONTAINER MECHANISM  
 ROLL BAR CONTAINER MECHANISM  
 VALVE AND CONTROLS ONLY, FOR MECHANISM  
 RESIDENTIAL CART TIPPER(S)  
 DOCK HEIGHT CONTROLS  
 HOPPER FLOOR LINER  
 TAILGATE SIDE LINERS  
 L.H. AND R.H. SIGNAL BUZZER  
 DUPLICATE STOP AND TURN SIGNALS  
 HOPPER FLOODLIGHT  
 AMBER STROBE LIGHT

AIR DRAIN VALVE, AUTOMATIC  
 SLACK ADJUSTERS, BRAKE, AUTOMATIC  
 ALCOHOL INJECTOR  
 HAND CONTROL VALVE, BRAKE  
 BATTERY (IES), ADDITIONAL  
 BATTERY DISCONNECT SWITCH



Specifications subject to change without notice.



CRANE CARRIER COMPANY, P.O. BOX 582891, TULSA, OK. 74158 (918) 836-1651

# IRL

## INTEGRATED REAR LOADER



Illustration representative of model, but not necessarily of these specifications.

# Base Model Specifications

## 31 CU. YD. TANDEM AXLE HIGH COMPACTION

### MODEL IRL31-T

Complete refuse vehicle...built by one manufacturer.  
Ann innovative concept...using proven components.

### GENERAL DATA

#### ■ DIMENSIONS

WHEELBASE, ins.	200
WEIGHT, est. lbs.	29,600
LENGTH, overall, ft.-ins.	34-6
HEIGHT, ft.-ins.	11-6
WIDTH, overall, ins.	96

#### ■ BODY

VOLUME, cu. yds.	31
COMPACTION RATIO, lbs./cu. yds.	1,000
BODY SHAPE	Cylindrical
BODY WELDING	Full
CONSTRUCTION MATERIAL, Steel	
• Sides, ga., psi	10 - 80,000
• Floor, ga., psi	10 - 80,000
• Roof, ga., psi	12 - 80,000
• Rear Apron, in., psi	1/4 - 100,000
EJECTION SYSTEM	
• Type	Full sweep
• Method	Hydraulic telescopic cylinder
• Controls	Lever operated valve
• Location	Left front of body
SIDE DOOR	
• Location	Left front of body
• Size, w x h, ins.	31 x 34

#### ■ HYDRAULIC SYSTEM

PUMP, Type	Gear with dry valve
• Size, gpm @ 1000 rpm	35
• Material	Cast iron
• Bearings	Roller
P.T.O.	Crankshaft drive
SYSTEM RPM, approx.	1,500
SYSTEM FLOW, gpm	46
SYSTEM PRESSURE, psi	2,500
RESERVOIR, gals.	55

#### ■ TAILGATE

HOPPER SIZE, cu. yds.	3.6
LOADING HEIGHT, above road, ins.	34
LOAD OPENING, w x h, ins.	82 x 66
CONTROLS	
• Operation	Semiautomatic
• Type	Hydraulic release
• Actuation	Dual lever, one-hand
• Location	R.H. tailgate side
CYCLE TIME, full cycle, sec.	25
RELOAD TIME, secs.	10
TAILGATE RAISE	Automatic, hydraulic lock
TAILGATE CONSTRUCTION	
• Hopper, ins., psi	3/16 - 100,000
• Lower Sides, ins., psi	3/16 - 80,000
• Upper Sides, ga., psi	12 - 45,000
COMPACTION FORCE, lbs. thrust	106,000
• lbs./sq. in., packer face	47

#### ■ CYLINDERS

Double acting, chrome-plated rods	All
T.G. LATCH AND RAISE, dia., ins.	3
T.G. COMPACTION, cushioned, hardened rods, dia., ins.	6
T.G. BLADE, cushioned, hardened rods, dia., ins.	5
EJECTION, telescopic, 5 stage, dia., ins.	8

#### ■ POWER SYSTEM

ENGINE	CUMMINS 6CT8.3*
• Horsepower	250
• Governed Speed, r.p.m.	2400
• Lube Oil Filter	Full flow
TRANSMISSION	ALLISON MT653DR*
• 5 speeds forward, 1 reverse	
• Filter, Spin on	Remote
• Oil Cooler	Water to oil
PROPELLER SHAFTS	1710 HD
RADIATOR, Remote, 3 Row Serpentine Core, sq. ins.	1200
AIR CLEANER	intake above cab, 14" Donaldson
EXHAUST	Vertical
FUEL TANK, gal.	50

IRL 2/91

#### ■ AXLES, SUSPENSION

FRONT AXLE, Eaton EFA-20F4, cap., lbs.	20,000
FRONT SUSPENSION, CCC, cap., lbs.	20,000
REAR AXLE, DS402, cap., lbs.	40,000*
• Ratio	5.57
REAR SUSPENSION, Hendrickson RS400, lbs.	40,000*
WHEELS, front and rear	20" Cast spoke
RIMS, front, ins.	20 x 10
rear, ins.	20 x 8
TIRES, front, Goodyear	14/BOR20
rear, Goodyear	10.00X20

#### ■ BRAKES

FRONT, S-CAM, ins.	16.5 x 6
REAR, S-CAM, ins.	16.5 x 7
RESERVOIR, cap., cu. ins.	6,880
AIR COMPRESSOR, Midland, C.F.M.	16
PARKING, rear axle	Spring loaded

#### ■ STEERING

DRIVERS STATION	Left Side
TYPE, Sheppard	Integral gear 5592
• Cap., lbs.	20,000
• Turning radius, wall to wall, (approx.) ft.	35

#### ■ ELECTRICAL

SYSTEM TYPE	12 V. Negative Ground
ALTERNATOR, Delco, 27 SI, amps	80
BATTERIES, maintenance free, 12 volt	3
• Total cold cranking amps, CCA	2,250

Specifications subject to change without notice.

\* Optional components available.



THE REFUSE VEHICLE SPECIALISTS

## STANDARD EQUIPMENT

### ■ CAB

LEFT HAND DRIVER'S STATION  
LOW ENTRY FIXED CAB  
ALL WELDED ALUMINUM  
ALL TINTED FLAT SAFETY GLASS  
AIR OPERATED WINDSHIELD WIPERS WITH WASHERS  
BENCH TYPE DRIVER'S AND PASSENGER'S SEAT  
RETRACTABLE SEAT BELTS  
L.H. AND R.H. SUNVISORS  
FRESH AIR HEATER WITH RECIRCULATING HEATER AND DEFROSTER

DUAL STAINLESS REAR VIEW MIRRORS  
16" X 6" WITH 8.5" R.H. CONVEX SPOT  
ROLL DOWN WINDOWS IN DOORS  
REAR VIEWING WINDOW  
ELECTRICAL SPEEDOMETER  
ELECTRICAL TACHOMETER W/ HOURMETER  
DUAL AIR PRESSURE GAUGE  
MODULE PANEL W/REPLACEABLE GAUGES  
VOLTMETER, ELECTRICAL OIL PRESSURE  
WATER TEMPERATURE AND FUEL

### ■ ELECTRICAL

MANUAL RESET CIRCUIT BREAKERS  
COLOR CODED WIRING  
EXTERIOR BODY WIRING INSTALLED IN  
CONDUIT W/WATERPROOF JUNCTION BOXES  
P.T.O. "ON" INDICATOR LIGHT  
PUMP ENGAGED OVERSPEED SWITCH  
SINGLE HEADLIGHTS  
FRONT AND REAR TURN SIGNALS  
IDENTIFICATION AND CLEARANCE LIGHTS  
SHOCK MOUNTED TAIL AND CLEARANCE LIGHTS  
DOME LIGHT IN CAB  
HAZARD WARNING FLASHER

SINGLE ELECTRICAL HORN  
WARNING LIGHT AND BUZZER FOR:  
• LOW AIR AND OIL PRESSURE  
• HIGH WATER TEMPERATURE  
INDICATOR LIGHT FOR:  
• PARKING BRAKE  
• TRANSMISSION HIGH TEMPERATURE  
• TRANSMISSION NEUTRAL  
• INTERAXLE DIFFERENTIAL  
30 AMP RADIO WIRE  
SPARE SWITCH - DASH MOUNTED IN CAB  
BACK-UP ALARM  
BACK-UP LIGHT IN REAR CLUSTER

### ■ BODY

CRANKSHAFT MOUNTED DRY VALVE PUMP  
RETURN LINE FILTER - REPLACEABLE ELEMENT  
CONTROLLED FLOW TAILGATE CYLINDER  
HYDRAULIC SIGHT GAUGE  
BODY SIDE DOOR

AUTOMATIC HYDRAULIC TAILGATE LATCH  
O-RING SEAL HYDRAULIC FITTINGS  
CHROME PLATED CYLINDER RODS  
CUSHIONED TAILGATE CYLINDERS  
ANSI Z 245.1 COMPLIANCE

### ■ PAINT

WHITE, POLYURETHANE ENAMEL:  
CAB, BODY, BUMPER, FENDERS, WHEELS, AIR  
CLEANER AND BACK OF EJECTOR PANEL

### ■ MISCELLANEOUS

LATERAL TORQUE RODS  
WHEEL OIL SEALS - ALL AXLES  
MUD FLAPS REAR OF FRONT AND FORWARD OF REAR  
WHEELS  
GATE TYPE TRANSMISSION SHIFT CONTROL  
WILLIAMS AIR THROTTLE CONTROL  
AIR RESTRICTION INDICATOR - AIR CLEANER MOUNTED  
TOW LOOPS, FRONT AND REAR

## OPTIONAL COMPONENTS

### ■ ENGINE

(VARIOUS HORSEPOWER)  
CUMMINS - 6CT8.3, I-10  
CAT-3116, 3306  
DETROIT - 6L-71TA DDEC

### ■ TRANSMISSION

MANUAL, CONSULT FACTORY  
AUTOMATIC ALLISON MT654, HT740RS

### ■ REAR SUSPENSION

HENDRICKSON RS460, 46,000#  
RIDEWELL 48K, 48,000#

### ■ REAR AXLE

EATON DS451p, 45,000#  
EATON DS461p, 46,000#  
ROCKWELL RT-40-145, 40,000#  
ROCKWELL RT-46-160, 46,000#

### ■ WHEEL

DISC, STEEL, FRONT AND REAR  
DISC, ALUMINUM, REAR

### ■ TIRE

FRONT, 315/80R22.5, 385/65R22.5, 425/65R22.5  
REAR, VARIOUS, TUBE AND TUBELESS

### ■ CAB

LEFT AND RIGHT DRIVING POSITIONS  
BIFOLD DOORS, L.H. AND R.H.  
AIR CONDITIONING  
DRIVER SEAT AIR RIDE OR T BAR  
PASSENGER SEAT, 2-MAN OR 3-MAN BENCH  
AIR HORN  
FAN, DASH MOUNTED  
FIRE EXTINGUISHER  
NEUTRAL COMMAND SYSTEM

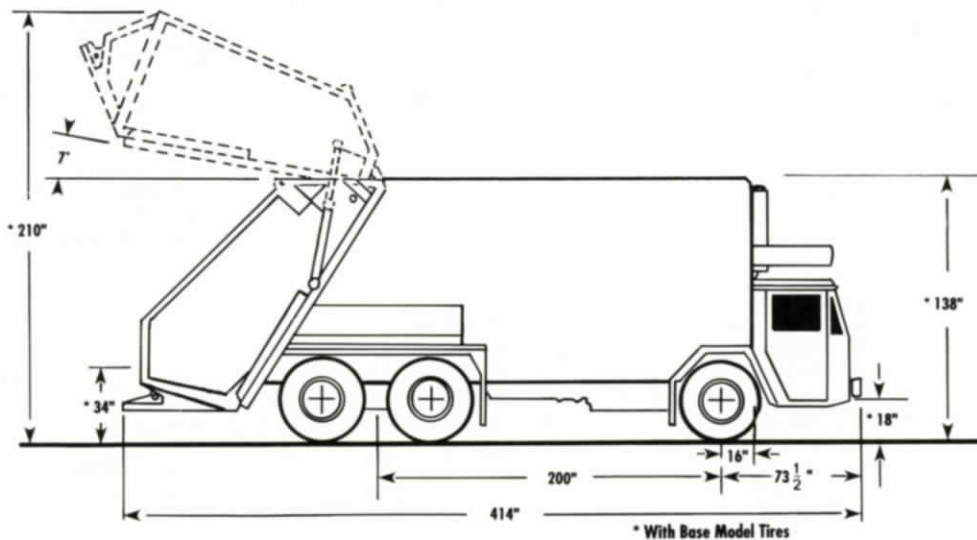
### ■ MISCELLANEOUS

BLOCK HEATER  
ETHER START AID  
FUEL/WATER SEPARATOR  
TRANSMISSION OIL COOLER  
AIR DRYER

### ■ BODY

REEVING CYLINDER CONTAINER MECHANISM  
ROLL BAR CONTAINER MECHANISM  
VALVE AND CONTROLS ONLY, FOR MECHANISM  
RESIDENTIAL CART TIPPER(S)  
DOCK HEIGHT CONTROLS  
HOPPER FLOOR LINER  
TAILGATE SIDE LINERS  
L.H. AND R.H. SIGNAL BUZZER  
DUPLICATE STOP AND TURN SIGNALS  
HOPPER FLOODLIGHT  
AMBER STROBE LIGHT

AIR DRAIN VALVE, AUTOMATIC  
SLACK ADJUSTERS, BRAKE, AUTOMATIC  
ALCOHOL INJECTOR  
HAND CONTROL VALVE, BRAKE  
BATTERY (IES), ADDITIONAL  
BATTERY DISCONNECT SWITCH



Specifications subject to change without notice.



CRANE CARRIER COMPANY, P.O. BOX 582891, TULSA, OK. 74158 (918) 836-1651

# IRL

## INTEGRATED REAR LOADER



Illustration representative of model, but not necessarily of these specifications.

# Base Model Specifications

## 31 CU. YD. TANDEM AXLE HIGH COMPACTION WITH PUSHER LIFT AXLE

### MODEL IRL31TP

Complete refuse vehicle...built by one manufacturer.  
An innovative concept...using proven components.

### GENERAL DATA

#### ■ DIMENSIONS

WHEELBASE, ins.	213
WEIGHT, est. lbs.	32,000
LENGTH, overall, ft.-ins.	34-6
HEIGHT, ft.-ins.	11-6
WIDTH, overall, ins.	96

#### ■ BODY

VOLUME, cu. yds.	31
COMPACTION RATIO, lbs./cu. yds.	1,000
BODY SHAPE	Cylindrical
BODY WELDING	Full
CONSTRUCTION MATERIAL, Steel	
• Sides, ga., psi	10 - 80,000
• Floor, ga., psi	10 - 80,000
• Roof, ga., psi	12 - 80,000
• Rear Apron, in., psi	1/4 - 100,000
EJECTION SYSTEM	
• Type	Full sweep
• Method	Hydraulic telescopic cylinder
• Controls	Lever operated valve
• Location	Left front of body
SIDE DOOR	
• Location	Left front of body
• Size, w x h, ins.	31 x 34

#### ■ HYDRAULIC SYSTEM

PUMP, Type	Gear with dry valve
• Size, gpm @ 1000 rpm	35
• Material	Cast iron
• Bearings	Roller
P.T.O.	Crankshaft drive
SYSTEM RPM, approx.	1,500
SYSTEM FLOW, gpm	46
SYSTEM PRESSURE, psi	2,500
RESERVOIR, gals.	55

#### ■ TAILGATE

HOPPER SIZE, cu. yds.	3.6
LOADING HEIGHT, above road, ins.	34
LOAD OPENING, w x h, ins.	82 x 66
CONTROLS	
• Operation	Semiautomatic
• Type	Hydraulic release
• Actuation	Dual lever, one-hand
• Location	R.H. tailgate side
CYCLE TIME, full cycle, sec.	25
RELOAD TIME, secs.	10
TAILGATE RAISE	Automatic, hydraulic lock
TAILGATE CONSTRUCTION	
• Hopper, ins., psi	3/16 - 100,000
• Lower Sides, ins., psi	3/16 - 80,000
• Upper Sides, ga., psi	12 - 45,000
COMPACTION FORCE, lbs. thrust	106,000
• lbs./sq. in., packer face	47

#### ■ CYLINDERS

Double acting, chrome-plated rods	All
T.G. LATCH AND RAISE, dia., ins.	3
T.G. COMPACTION, cushioned, hardened rods, dia., ins.	6
T.G. BLADE, cushioned, hardened rods, dia., ins.	5
EJECTION, telescopic, 5 stage, dia., ins.	8

#### ■ POWER SYSTEM

ENGINE	CUMMINS 6CT8.3 *
• Horsepower	250
• Governed Speed, r.p.m.	2400
• Lube Oil Filter	Full flow
TRANSMISSION	ALLISON MT653DR *
• 5 speeds forward, 1 reverse	
• Filter, Spin on	Remote
• Oil Cooler	Water to oil
PROPELLER SHAFTS	1710 HD
RADIATOR, Remote, 3 Row Serpentine Core, sq. ins.	1200
AIR CLEANER	intake above cab, 14" Donaldson
EXHAUST	Vertical
FUEL TANK, gal.	50

#### ■ AXLES, SUSPENSION

FRONT AXLE, Eaton EFA-20F4, cap., lbs.	20,000
FRONT SUSPENSION, CCC, cap., lbs.	20,000
REAR AXLE, DS402, cap., lbs.	40,000
• Ratio	6.14
REAR SUSPENSION, Hendrickson RS400, lbs.	20,000 *
PUSHER AXLE, (Air Lift) cap., lbs.	20,000
WHEELS, front, rear & pusher	20" Cast spoke
RIMS, front, ins.	20 x 10
rear, pusher, ins.	20 x 8
TIRES, front, Goodyear	14/BOR20
rear, pusher, Goodyear	10.00X20

#### ■ BRAKES

FRONT, S-CAM, ins.	16.5 x 6
REAR, S-CAM, ins.	16.5 x 7
RESERVOIR, cap., cu. ins.	5,502
AIR COMPRESSOR, Midland, C.F.M.	16
PARKING, rear axle	Spring loaded

#### ■ STEERING

DRIVERS STATION	Left Side
TYPE, Sheppard	Integral gear S592
• Cap., lbs.	20,000
• Turning radius, wall to wall, (approx.) ft.	37

#### ■ ELECTRICAL

SYSTEM TYPE	12 V. Negative Ground
ALTERNATOR, Delco, 27 SI, amps	80
BATTERIES, maintenance free, 12 volt	3
• Total cold cranking amps, CCA	2,250

Specifications subject to change without notice.

\* Optional components available.



THE REFUSE VEHICLE SPECIALISTS

## STANDARD EQUIPMENT

### CAB

LEFT HAND DRIVER'S STATION  
LOW ENTRY FIXED CAB  
ALL WELDED ALUMINUM  
ALL TINTED FLAT SAFETY GLASS  
AIR OPERATED WINDSHIELD WIPERS WITH WASHERS  
BENCH TYPE DRIVER'S AND PASSENGER'S SEAT  
RETRACTABLE SEAT BELTS  
L.H. AND R.H. SUNVISORS  
FRESH AIR HEATER WITH RECIRCULATING HEATER AND DEFROSTER

DUAL STAINLESS REAR VIEW MIRRORS  
16" X 6" WITH 8.5" R.H. CONVEX SPOT  
ROLL DOWN WINDOWS IN DOORS  
REAR VIEWING WINDOW  
ELECTRICAL SPEEDOMETER  
ELECTRICAL TACHOMETER W/ HOURMETER  
DUAL AIR PRESSURE GAUGE  
MODULE PANEL W/ REPLACEABLE GAUGES  
VOLTMETER, ELECTRICAL OIL PRESSURE  
WATER TEMPERATURE AND FUEL

### ELECTRICAL

MANUAL RESET CIRCUIT BREAKERS  
COLOR CODED WIRING  
EXTERIOR BODY WIRING INSTALLED IN CONDUIT W/ WATERPROOF JUNCTION BOXES  
P.T.O. "ON" INDICATOR LIGHT  
PUMP ENGAGED OVERSPEED SWITCH  
SINGLE HEADLIGHTS  
FRONT AND REAR TURN SIGNALS  
IDENTIFICATION AND CLEARANCE LIGHTS  
SHOCK MOUNTED TAIL AND CLEARANCE LIGHTS  
DOME LIGHT IN CAB  
HAZARD WARNING FLASHER

SINGLE ELECTRICAL HORN  
WARNING LIGHT AND BUZZER FOR:  
• LOW AIR AND OIL PRESSURE  
• HIGH WATER TEMPERATURE  
INDICATOR LIGHT FOR:  
• PARKING BRAKE  
• TRANSMISSION HIGH TEMPERATURE  
• TRANSMISSION NEUTRAL  
• INTERAXLE DIFFERENTIAL  
30 AMP RADIO WIRE  
SPARE SWITCH - DASH MOUNTED IN CAB  
BACK-UP ALARM  
BACK-UP LIGHT IN REAR CLUSTER

### BODY

CRANKSHAFT MOUNTED DRY VALVE PUMP  
RETURN LINE FILTER - REPLACEABLE ELEMENT  
CONTROLLED FLOW TAILGATE CYLINDER  
HYDRAULIC SIGHT GAUGE  
BODY SIDE DOOR

AUTOMATIC HYDRAULIC TAILGATE LATCH  
O-RING SEAL HYDRAULIC FITTINGS  
CHROME PLATED CYLINDER RODS  
CUSHIONED TAILGATE CYLINDERS  
ANSI Z 245.1 COMPLIANCE

### PAINT

WHITE, POLYURETHANE ENAMEL:  
CAB, BODY, BUMPER, FENDERS, WHEELS, AIR CLEANER AND BACK OF EJECTOR PANEL

### MISCELLANEOUS

LATERAL TORQUE RODS  
WHEEL OIL SEALS - ALL AXLES  
MUD FLAPS REAR OF FRONT AND FORWARD OF REAR WHEELS  
GATE TYPE TRANSMISSION SHIFT CONTROL  
WILLIAMS AIR THROTTLE CONTROL  
AIR RESTRICTION INDICATOR - AIR CLEANER MOUNTED  
TOW LOOPS, FRONT AND REAR

## OPTIONAL COMPONENTS

### ENGINE

(VARIOUS HORSEPOWER)  
CUMMINS - 6CT8.3, I-10  
CAT-3116, 3306  
DETROIT - 6L-71TA, D6EC

### TRANSMISSION

MANUAL, CONSULT FACTORY  
AUTOMATIC ALLISON MT654, HT740RS

### WHEEL

DISC, STEEL, FRONT AND REAR  
DISC, ALUMINUM, REAR

### REAR SUSPENSION

HENDRICKSON RS460, 46,000#  
RIDWELL 48K, 48,000#

### REAR AXLE

EATON DS451p, 45,000#  
EATON DS461p, 46,000#  
ROCKWELL RT-40-145, 40,000#  
ROCKWELL RT-46-160, 46,000#

### TIRE

FRONT, 315/80R22.5, 385/65R22.5, 425/65R22.5  
REAR, VARIOUS, TUBE AND TUBELESS

### CAB

LEFT AND RIGHT DRIVING POSITIONS  
BIFOLD DOORS, L.H. AND R.H.  
AIR CONDITIONING  
DRIVER SEAT AIR RIDE OR T BAR  
PASSENGER SEAT, 2-MAN OR 3-MAN BENCH  
AIR HORN  
FAN, DASH MOUNTED  
FIRE EXTINGUISHER  
NEUTRAL COMMAND SYSTEM

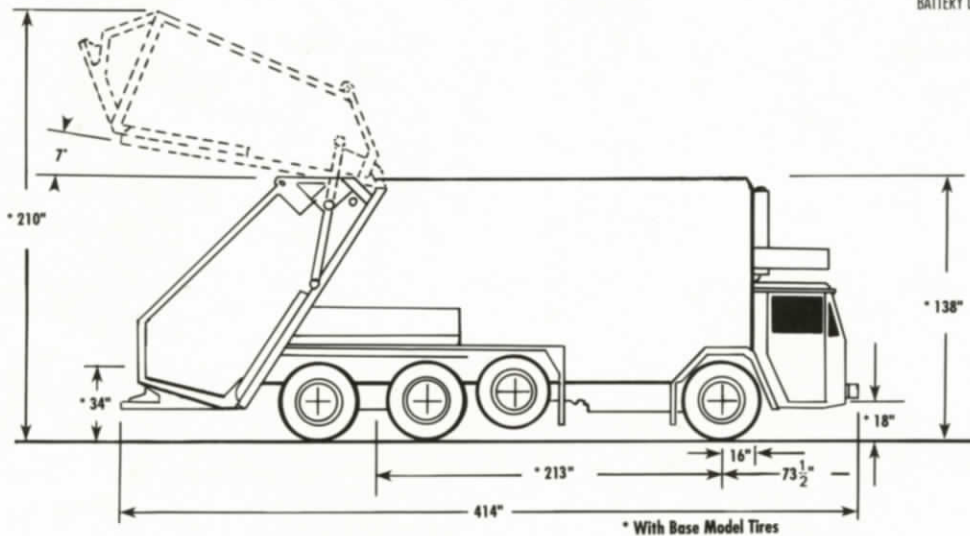
### MISCELLANEOUS

BLOCK HEATER  
ETHER START AID  
FUEL/WATER SEPARATOR  
TRANSMISSION OIL COOLER  
AIR DRYER

### BODY

REEVING CYLINDER CONTAINER MECHANISM  
ROLL BAR CONTAINER MECHANISM  
VALVE AND CONTROLS ONLY, FOR MECHANISM  
RESIDENTIAL CART TIPPER(S)  
DOCK HEIGHT CONTROLS  
HOPPER FLOOR LINER  
TAILGATE SIDE LINERS  
L.H. AND R.H. SIGNAL BUZZER  
DUPLICATE STOP AND TURN SIGNALS  
HOPPER FLOODLIGHT  
AMBER STROBE LIGHT

AIR DRAIN VALVE, AUTOMATIC  
SLACK ADJUSTERS, BRAKE, AUTOMATIC  
ALCOHOL INJECTOR  
HAND CONTROL VALVE, BRAKE  
BATTERY (IES), ADDITIONAL  
BATTERY DISCONNECT SWITCH



Specifications subject to change without notice.

**CCC**

CRANE CARRIER COMPANY, P.O. BOX 582891, TULSA, OK. 74158 (918) 836-1651



Crane Carrier offers a full range of container mechanisms for the Integrated Rear Loader. IRL options accept containers ranging from 60 to 90-gallon residential sizes, up to heavy duty 10-cu. yd. commercial sizes.

### REEVING CYLINDER

Rated at 15,000-pounds, this rugged option is available mounted on top of the IRL roof or recessed in the roof with hinged access cover. The reeving cylinder handles large containers smoothly and efficiently.

#### REEVING CYLINDER FEATURES

- Compatible with up to 10 cu. yd. containers.
- Positive latch and load lip increases hopper capacity to 4.4 yards.
- Operation is smooth, quick (less than 15 seconds).
- 15,000-lb. line pull rating with over two times safety factor.
- Tangle-free sheave design extends cable life.
- Thumb-activated throttle switch for fast, positive control.



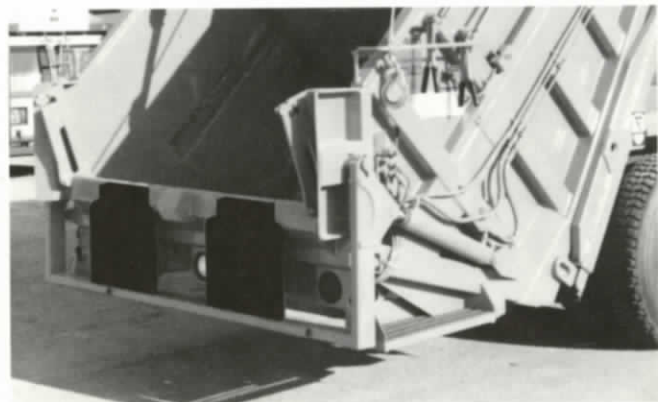
Shown with access cover open, the recessed version fits in top of body trough, adding less than 4" to vehicle height.



### RESIDENTIAL CART TIPPER

Single or dual residential cart tipper are available as factory installed options and are compatible with reeving cylinder and/or hydraulic lift bar options.

Offering excellent ground clearance and a slim profile the cart tipper are recessed into the latch/load lip extension when reeving cylinder or lift bar mechanisms are present. CCC's tipper system incorporates an interlock that prevents the compaction mechanism from damaging the tipper when in the dumped position.



Specifications subject to change without notice.



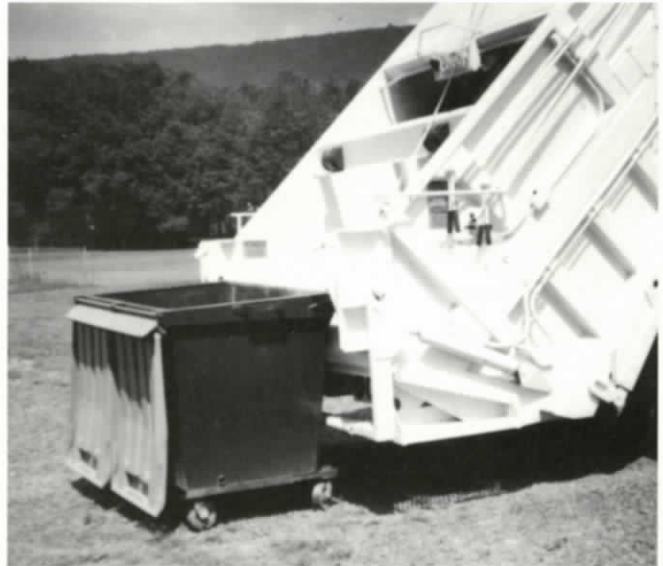
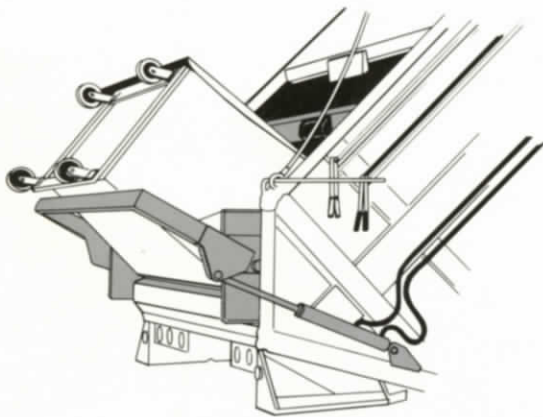
THE REFUSE VEHICLE SPECIALISTS

## HYDRAULIC LIFT BAR MECHANISM

Give efficiency a big lift with the CCC hydraulic lift bar mechanism. Rated at 3,000 lbs., it will quickly empty one to three cu. yd. containers into the massive IRL 4.4 cu. yd. hopper.

### LIFT BAR MECHANISMS FEATURES

- Compatible with containers of up to 3 cu. yds.
- Positive latch and load lip increases hopper capacity to 4.4 cu. yds.
- Smooth, positive control of container dump cycle.
- 3,000-lb. lift capacity protected by cylinder port relief



Specifications subject to change without notice.

**CCC**

CRANE CARRIER COMPANY, P.O. BOX 582891, TULSA, OK. 74158 (918) 836-1651

# Cab Options

The Low Entry Walk-Thru IRL cab can be equipped with productivity and comfort options to meet your specific needs. From multiple crew seating to time saving optional systems, the roomy walk-thru cab delivers maximum comfort while minimizing route time.

### BI-FOLD DOORS

In addition to the effort and time savings provided by the IRL's standard low entry height, take a step further in ease of operator entry and exit with bi-fold doors. Available for right side, left side, or both sides, doors fold forward and lock out of the way for unrestricted entry and exit.



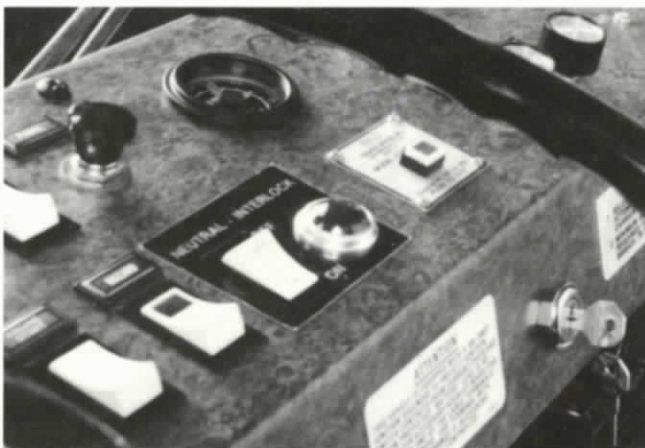
### DUAL STEERING

Maximum productivity from fewer crew members is accomplished with the dual steering option. Route time is reduced by allowing your driver/operator to remain curb side, close to the collection task, saving valuable time and energy. The entire assembly is factory-built and installed, not added by a modifier, so it works right—from the start. Turn a new corner in productivity with the dual steering option.



### NEUTRAL COMMAND SYSTEM

The Neutral Command System automatically sets the parking brake, turns on the hydraulic pump, energizes throttle advance circuit, and limits engine RPM when the transmission is placed in neutral. It's the automatic way to handle the entire procedure precisely and easily.



Specifications subject to change without notice.



THE REFUSE VEHICLE SPECIALISTS

IRL 2/91

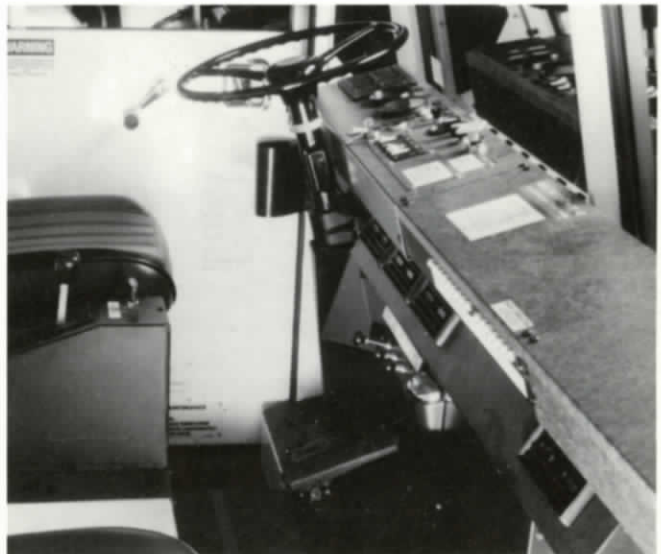
## CREW SEATING OPTIONS

The IRL cab has the right solutions for your crew space requirements. Multiple seating options include three independently adjustable bench seats, or single drivers seat with two-man or three-man bench passenger seat. Retractable seat belts are provided for all seating combinations.



## FACTORY INSTALLED AIR CONDITIONING

Integrally built into the IRL's heater, 40,000 BTU's can be directed through defrost, dash, or floor vents keeping you cool in the hottest of climates.



## MISCELLANEOUS OPTIONS

- Air Horn
- Drivers seat, air ride or T-bar
- Emergency Flare Kit
- Fan, Dash Mounted
- Fire Extinguisher

Specifications subject to change without notice.



CRANE CARRIER COMPANY, P.O. BOX 582891, TULSA, OK. 74158 (918) 836-1651