

Dempster Royal Dumpmaster



Dempster introduced the first clearance-arm front loader in 1958. Since that time it has been imitated, simulated, substituted and even counterfeited. Now Dempster introduces the first real change in front loaders since 1958—the Royal Dumpmaster—the ultimate front loader.



 **Dempster Systems[®]**
A Subsidiary of Technology Incorporated

Dempster



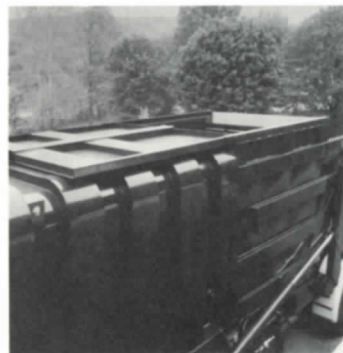
Setting new standards that others will be forced to copy

The Royal Dempster front loader is tomorrow's front loader today—establishing new industry design and performance standards by which all other front loaders will be measured. Lighter than any other high compaction front loader, the Royal Dempster significantly increases payload capabilities and operating productivity. Dempster's exclusive new reverse action compaction/ejection cylinder is mounted in reverse position for maximum compaction force throughout body length. The industry's first full-flow hydraulic system is designed to accommodate maximum pump flow. This system provides higher reliability and reduced maintenance and puts Dempster on the leading edge of cylinder and hydraulic technology.

Other features include: 8,000 lb. one-piece arms, constructed of pre-stressed tube, which are bolted to a torque tube held in place with split bearings, two large through bolts and composite bushings; and a fork-shaft held in place by split bearings and replaceable bushings. The Royal Dempster...just what you would expect from the leader—Dempster Systems.



Dempster's exclusive reverse cylinder offers the cylinder an... 21st century, now. Through its... Dempster can increase payload... compaction front loader. That... route and less trips to the land...

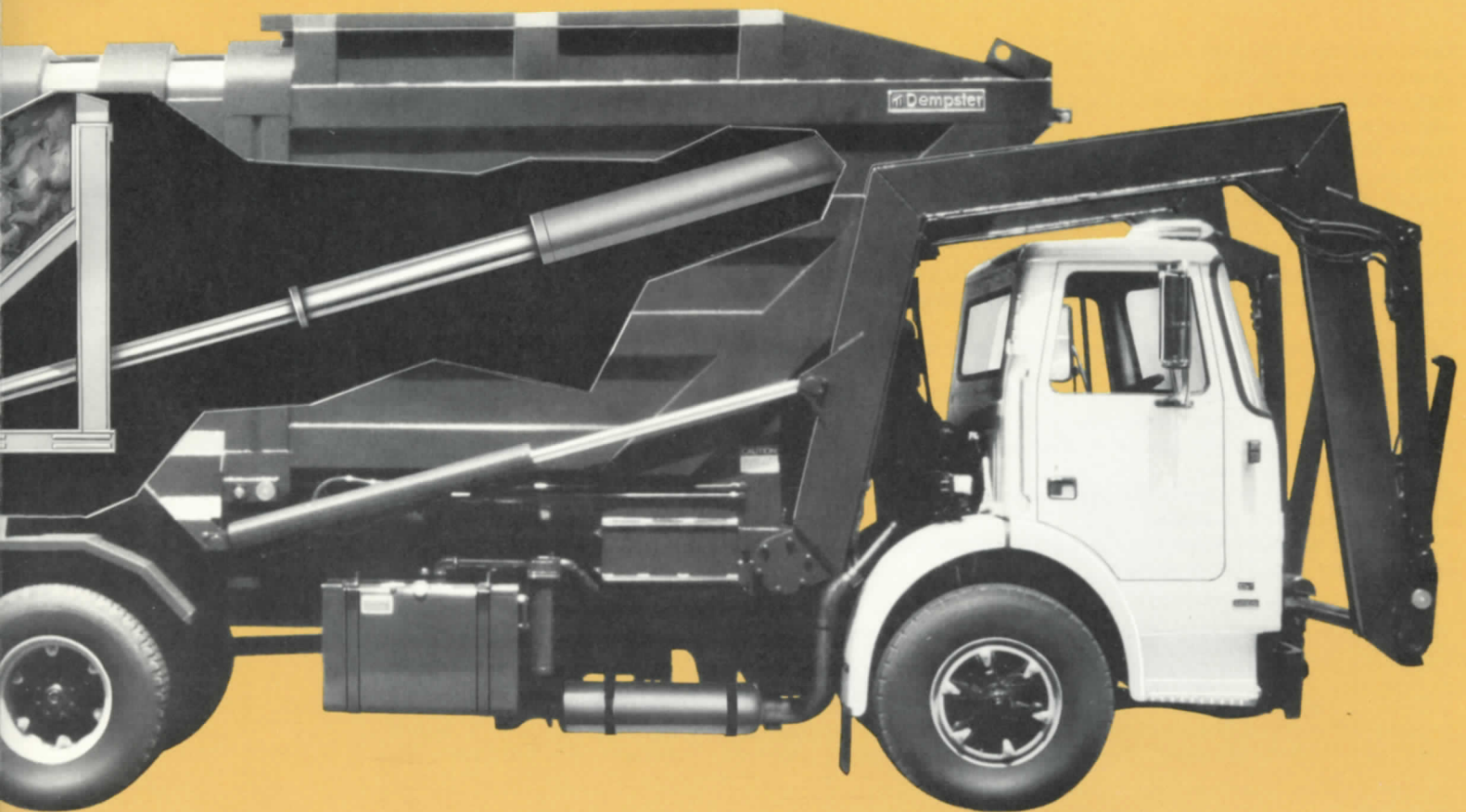


Round Cornered Body: Distributes the greater compaction forces and significantly reduces body weight resulting in increased payload capabilities.



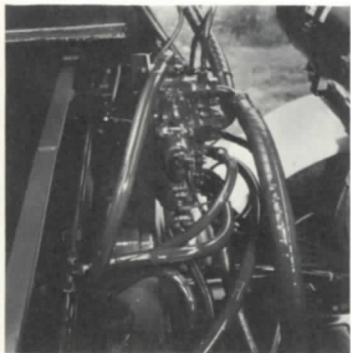
Air operated controls Single joystick provides one-hand control of arms and forks. Automatic pack control allows hands-off compaction between containers. Both combine to reduce driver fatigue.

Royal Dumpmaster



action compaction/ejection and hydraulic technology of the innovative cylinder design loads 25% over any other high means more pickups per d fill. Coupling Dempster's

advanced cylinder technology with our new full-flow hydraulics Dempster cycles faster resulting in faster pickup and handling of containers. And because of these features, driver fatigue is reduced and productivity is maximized. Add it all up and it means reduced operating and maintenance costs.



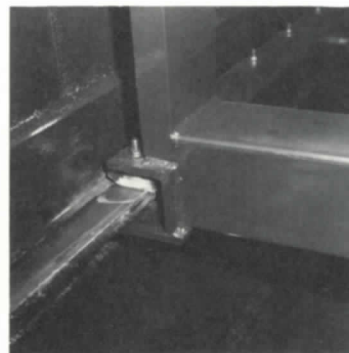
Full-flow hydraulics

Large control valve accommodates direct drive pump delivering 70 gpm at driver's command and requires only 3 hp in free flow.



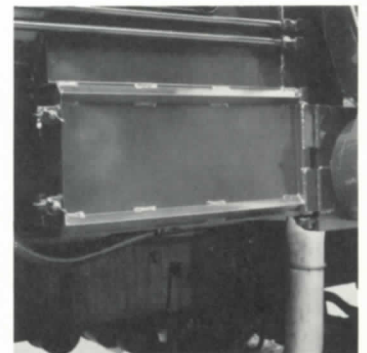
Roto-Dor tailgate

Hydraulic lift and latch allows driver to remain in cab while unlatching and raising Roto-Dor tailgate to eject load.



Packer head slides

Slides located 12" above floor level reducing abrasion and potential of freezing during extreme weather.



Large capacity sump

71 gallon capacity, located at front of body features 12" x 18" clean out doors on both sides permitting behind blade cleaning without entering body.

Royal Dumpmaster condensed specifications

Outside oil tank: 80 gallon capacity with 76 gallons of high quality all-weather hydraulic fluid.

Return line filter: DSI dual element, full flow six micron spin-on type with dirt indicator.

Power drive: Live pump with capacity of 70 gpm at 1800 rpm and 2500 psi.

Packer/ejector cylinder: Exclusive Dempster reverse action cylinder clears hopper in 12 sec. with 42 sec. full cycle and delivers 189,500 lbs. of continuous force from rear to front of body.

Arm packer interlock: Prevents dumping behind the packer blade.

Automatic sliding hopper cover: Automatically opens when arms are raised.

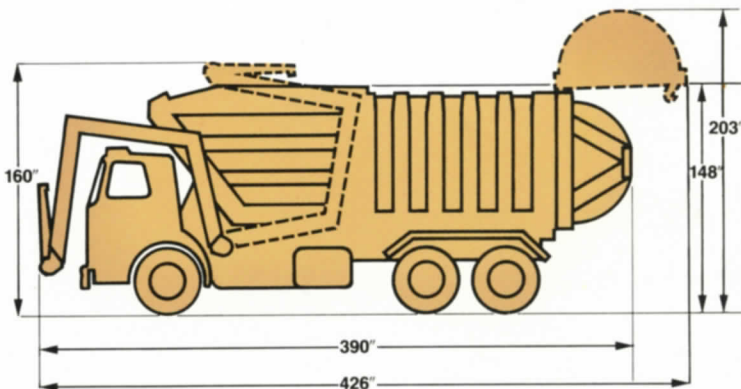
Rubber container bumpers: Located at front fork to reduce container damage and noise.

8,000 lb. variable cushioned bolt-on arms: Pre-stressed one-piece tube construction for lighter weight while maintaining rigidity.

Index forks: For travel with arms up or down while preventing loss of container in dump position.

Air controls: Direct to valve spool without intermediate air cylinders between cab controls and valve.

Built-in cab spillpan: Prevents spillage of refuse between body and cab and offers added cab protection.



Height dimensions based on 42" chassis frame height.

Model Number	Arm Capacity (Pounds)	Approx. Body & Loader Weight (Pounds)	Packing Force (Pounds)	Arm Cycle (Seconds)	Packing Cycle (Seconds)	Half Cycle Clear Hopper (Seconds)	Hopper Opening (Inches)	Hopper Capacity (Cu. Yards)	Body Capacity Rear of Hopper (Cu. Yards)	Tailgate Capacity (Cu. Yards)	Total Capacity (Net Cu. Yards)	Sump Capacity (Gallons)
RDU80-33	8,000	18,000	189,500	15	42	12	80 x 80	9	18	6	33	71

Bulletin No. RDU-0585
All specifications and equipment subject to change without notice



Dempster Systems®

A Subsidiary of Technology Incorporated

Printed in U.S.A.

P.O. Box 3127, Knoxville, TN 37917
Phone: 615/637-3711, Telex: 55-7478, Cable: Dumpster