

SECTION

10A

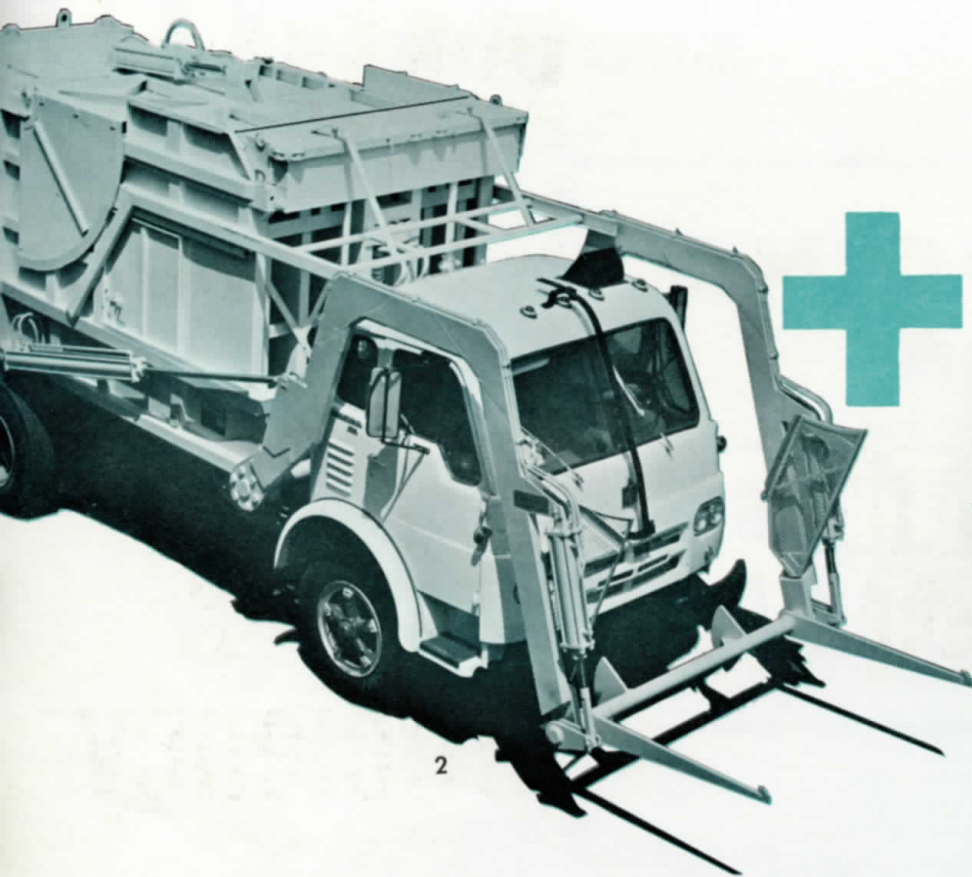
**HAND LOADING**  
with the

**DEMPSTER  
DUMPMASTER<sup>®</sup>**

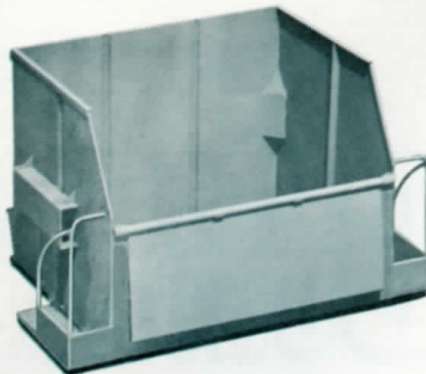


©1962

DEMPSTER BROTHERS,  
Inc.  
Knoxville, Tennessee



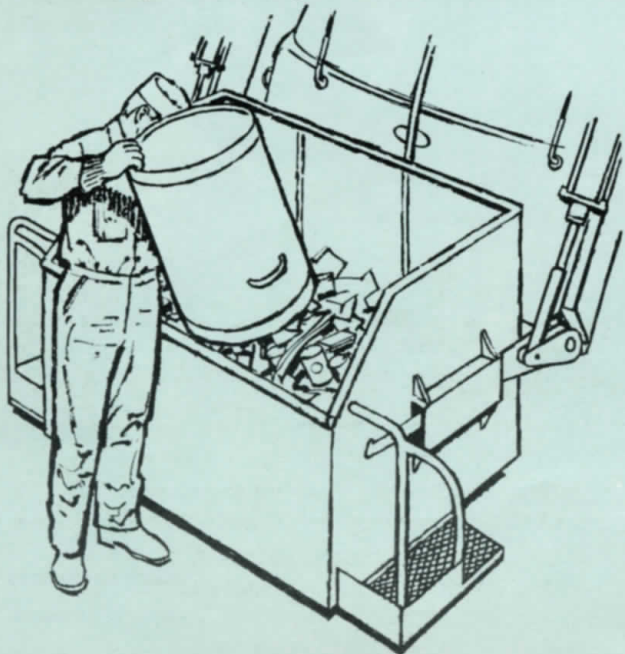
2



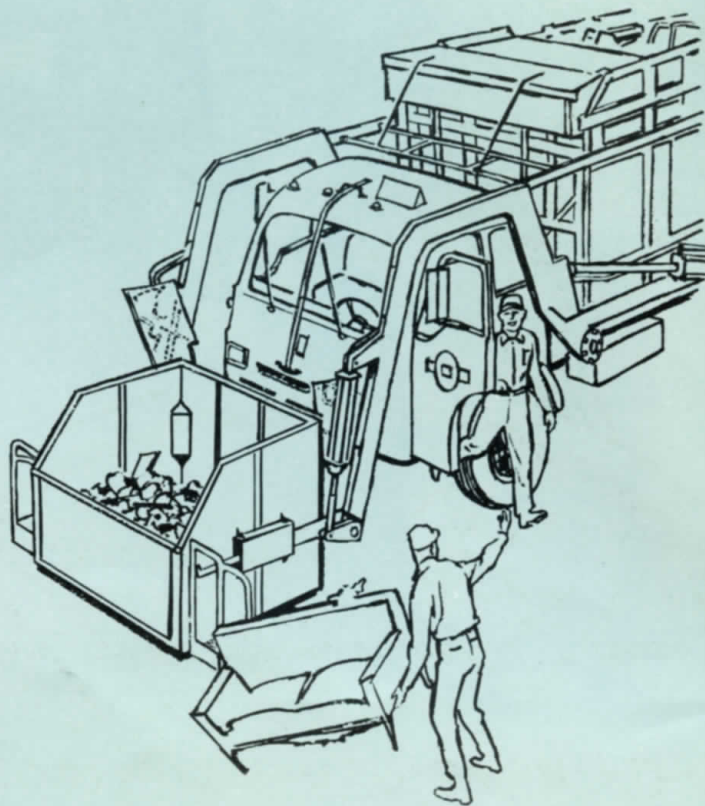
3

## Here's why... BIG CAPACITY HOPPER LOW LOADING HEIGHT

The big capacity 4 cu. yd. hopper with its low, 36" loading height permits quicker, injury-free loading without the spillage that is common where small capacity hoppers are involved. With no framework overhead, can may be held at vertical position for quick discharge.



2



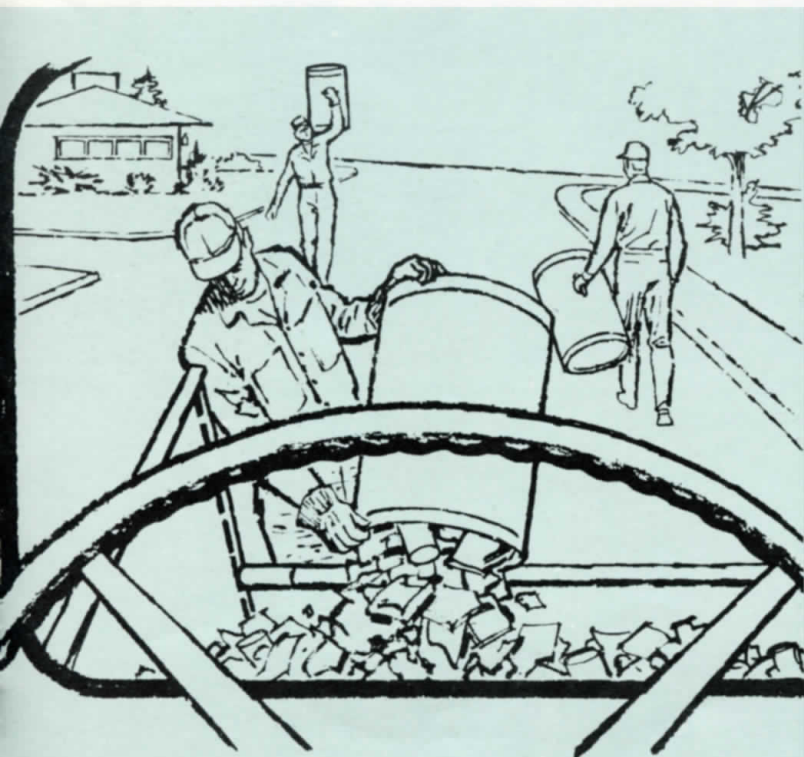
## CLEARANCE ARMS

The safe clearance arms of the Dumpmaster permit the driver to dismount at all times and assist the loading crews. No danger of injury to driver's arm or head . . . no chance of entrapment in cab.

# BIG\* Increase in Hand Loading Efficiency

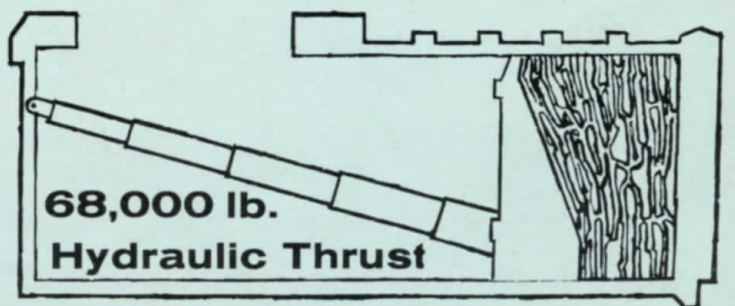
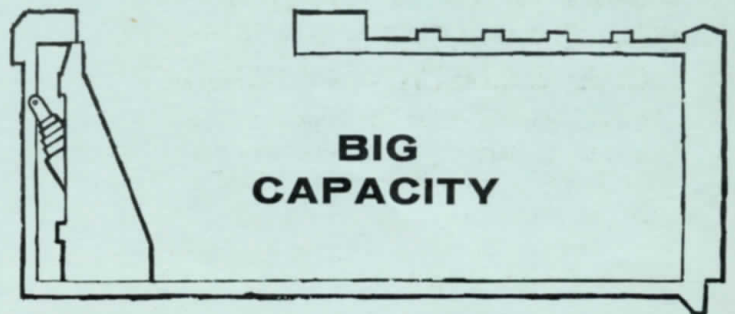


\*On hundreds of hand-collection routes . . . in coast-to-coast competitive demonstrations, the Dumpmaster has never failed to substantially increase hand-loading efficiency over the method previously used.



## OUT-FRONT VISUAL CONTROL

With the crew working out front in plain view of the driver at all times, chances of injury are greatly reduced. The crew and Dumpmaster become a smooth, fast-moving team. Visual control enables the driver to pace the speed of the collection work.



With a larger capacity compaction chamber and a 68,000 lb. packing force, the Dumpmaster gets bigger, denser payloads, covers more blocks . . . makes fewer trips to the disposal area.

## Carry-Out Service

■ Carry-out service in residential areas is a natural for the Dumpmaster. The driver can maintain visual contact and save his crew steps in many instances.



■ Photo 5, above, shows the teamwork of a coordinated crew. As one man dumps, another goes out for another load, and a third approaches the Dumpmaster with a tub of refuse.

5



■ Photo 6 illustrates the convenience of the big-capacity hopper, which enables two men to unload the refuse at the same time.



■ Photo 7 shows a two-man crew unloading household refuse into the low loading-height hopper.



■ Photo 8 shows a loading crew using 35 gallon carry-out tubs for collection of refuse in a residential area.

■ Photo 9, below, is a driver's eye-view of the crew in front of the Dumpmaster.

■ Photo 10. A Pennsylvania municipality collects residential municipal refuse with this Dumpmaster.

■ Photo 11. When the container is filled, the clearance arms raise it overhead for emptying into the compaction chamber.



# Alley and Curbside Pickup

■ With the short carrying distances involved, alley and curbside pickup is the fastest method of hand collection. Because of the fast progress, out-front visual control of the crew is even more important.



12



■ Photos 13, 14 and 15 illustrate the high-speed travel possible with the Dumpmaster. The progress shown

was accomplished in the 53 seconds that elapsed between the first and last photo.

■ Photo 17 shows Dumpmaster serving a collection route along a busy street. Where parked cars are involved, the possibility of accident is increased, making visual control a vital safety factor.

■ Photo 16, below, shows a crew performing curbside pickup in a Southern municipality.

■ Photo 18. Driver on curbside pickup route empties loaded container.



# Non-Selective Loading

■ With the Dumpmaster, non-selective loading of all trash, refuse, trimmings and large discarded household objects is possible with one trip. The large - capacity hopper will accommodate huge loads and eliminate the necessity of sending out open-bed trucks on special trips.



19

■ Photo 19 shows how two men with pitchforks quickly load a large pile of limbs and trimmings.



20

■ Photo 20, above, shows the open-bed method previously used by a Florida city.



21

■ Photo 21 shows how the Dumpmaster solved the problem through use of its big capacity hopper.



22

■ Photo 22 shows collection of leaves with pitchforks.

■ Photo 23 illustrates how easily large, discarded household items are accommodated by the container.



23



24

■ Photo 24. Another shot illustrates the teamwork of the crew and the Dumpmaster in quick clean-up of big-volume trimmings.



25

■ Photo 25. The trimmings are transferred to the compaction chamber where they are reduced to a fraction of their former volume.

■ Photo 26. Dumpmaster approaches loaded container with lifting forks preparatory to emptying the contents into its compaction chamber.

## Containerized Service

■ The Dumpmaster is unexcelled for collection of containerized refuse. It is not limited to small-capacity containers. One man, the driver, can handle collections of containerized refuse without leaving the cab. A Dumpmaster can put off its hand-loading hopper and perform containerized collection when commercial areas are encountered along a hand-collection route.



26



27

■ Photo 27, above, shows the unsightly conditions present at a school where trash cans were used for storage.



28

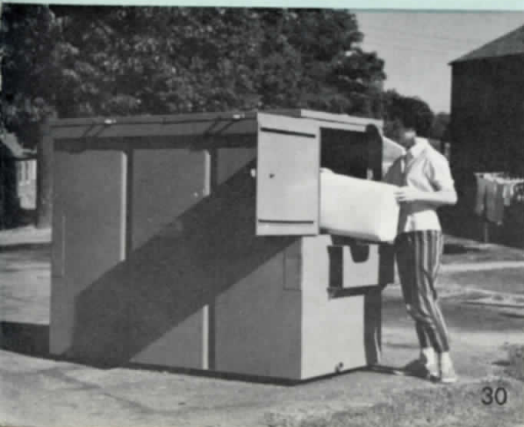
■ Photo 28 shows the school with one 3 yd. container, located closer to kitchen, completely enclosing the unsightly refuse.



29

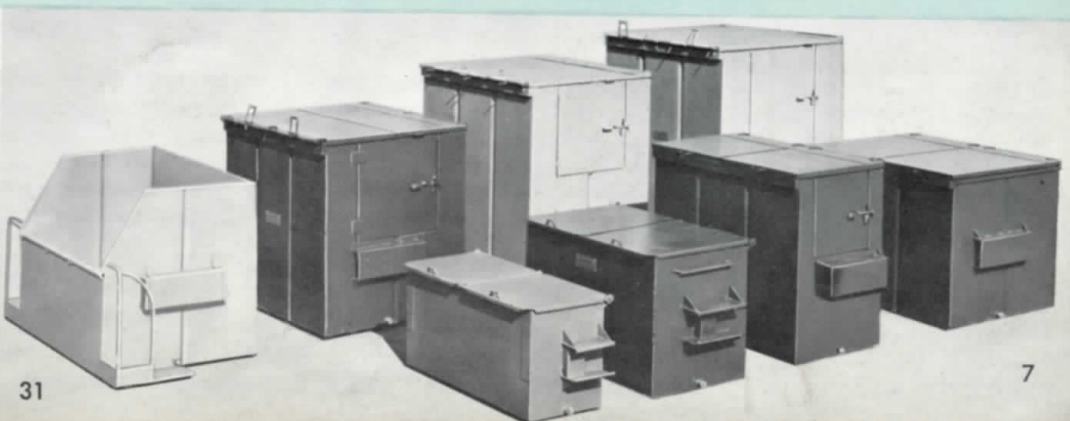
■ Photo 29. Dumpmaster on a hand-collection route stops to service a 6 yd. container at a variety store.

■ Photo 30 illustrates how one 4 yd. container serves a large number of families in a housing project.



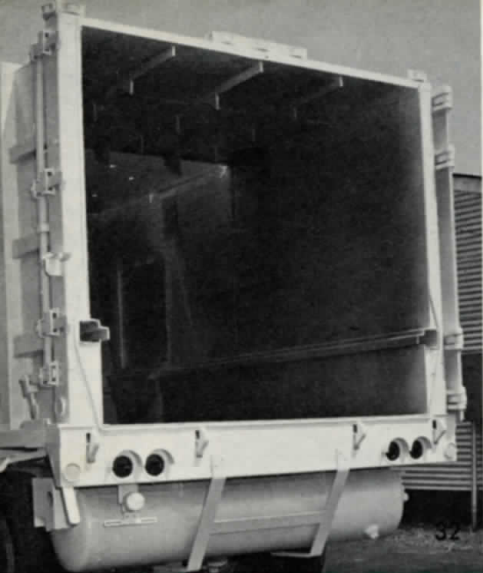
30

■ Photo 31 below illustrates the wide variety of containers available to meet any refuse storage requirement. Containers range from one to eight cu. yd. capacity and are built to provide years of satisfactory service.



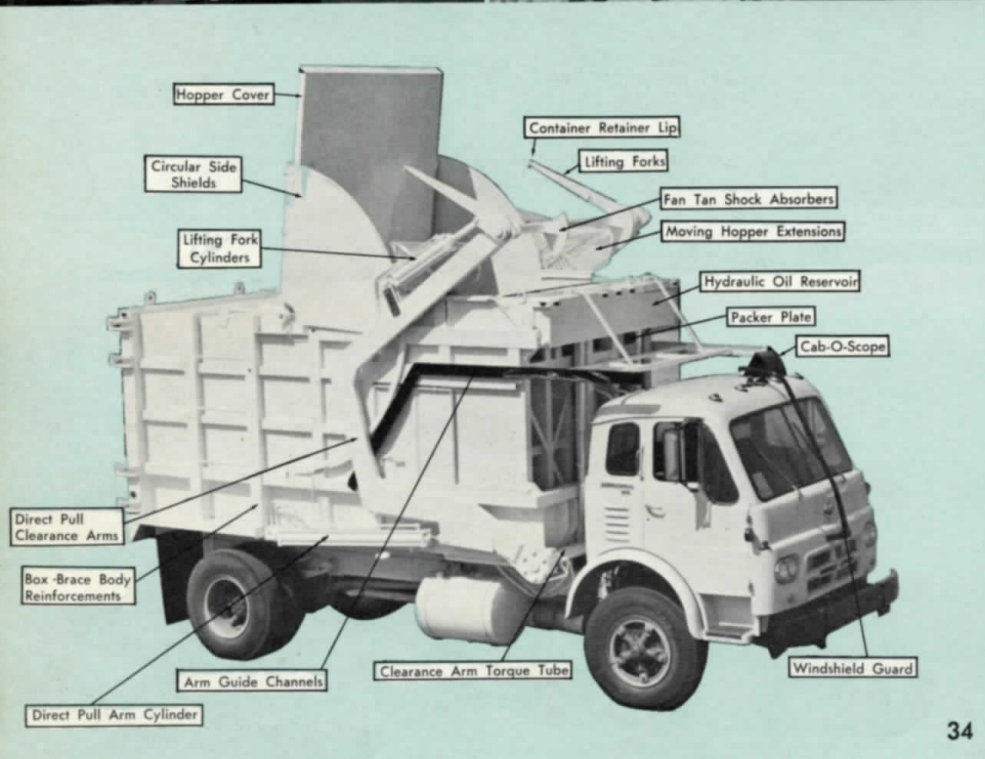
31

7



■ Photo 32, at left, shows the optional side hinged door which permits the Dumpmaster to be used for conventional purposes when it is not in use for refuse collection.

■ Photo 33 shows the Dumpmaster equipped with a snow removal bucket which converts it into a highly efficient snow removal unit. It clears its own path, does not tie up traffic and compacts an amazing amount of snow into its body.



## The DP 30-20 DB

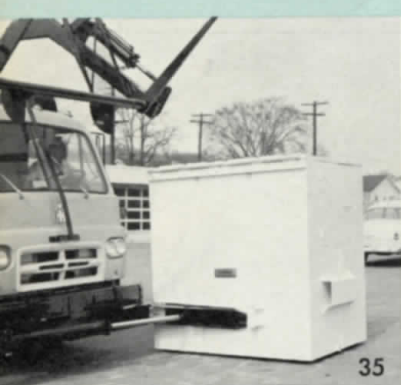
■ The DEMPSTER-DUMPMMASTER DP 30 - 20 DB is highly efficient for the combined work of hand collection and container service.

■ In most instances it can be mounted on a single axle truck\* effecting substantial savings in truck costs and expenses of operation.

■ The DP 30 - 20 DB is highly maneuverable and readily negotiates various alleys and tight places.

■ In density of packing and big pay load, this model is unbeatable. The hydraulically operated packer plate generates a thrust of 68,000 pounds which reduces the material to a fraction of its former volume.

\*Please do not specify truck without checking with the factory.



■ Photo 35 illustrates the optional right angle pickup attachment which enables the operator to align the container with the truck in narrow alleys.

■ Photo above shows hand loaded container equipped with non-slip grating steps and a grab rail for the convenience of crews between loading stops.

■ Photo 37 shows the optional Cab-O-Scope attachment which enables the driver to keep the container in view during dumping operations.

■ Photo 38 shows the optional wash-out tank and hose which permits quick and easy cleaning of containers.

**D E M P S T E R B R O T H E R S Inc.**  
**KNOXVILLE 17, TENNESSEE**  
 and

**California Branch / 19826 S. Alameda / Compton, California**