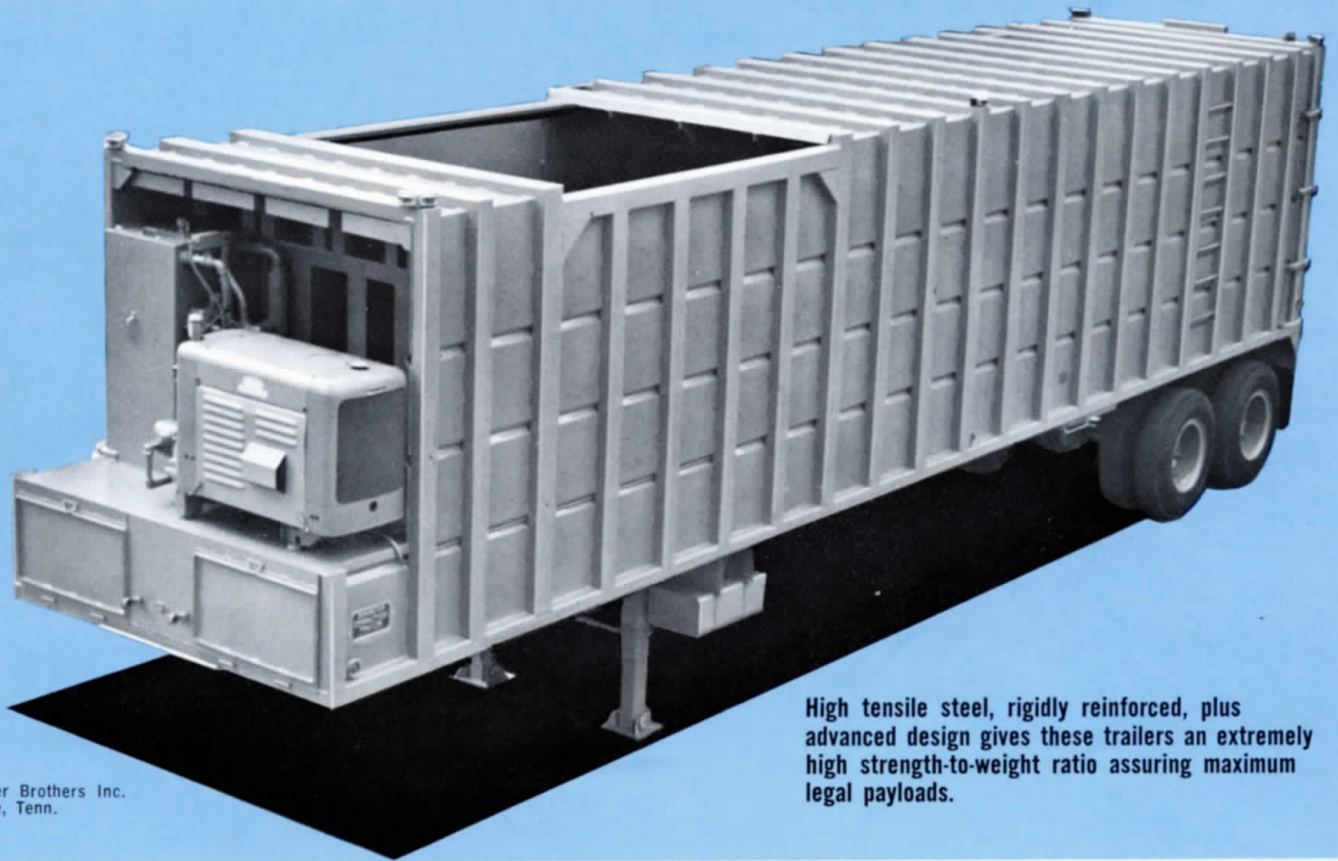


# THE DEMPSTER Compaction Trailer 65 & 75 Cu. Yd.

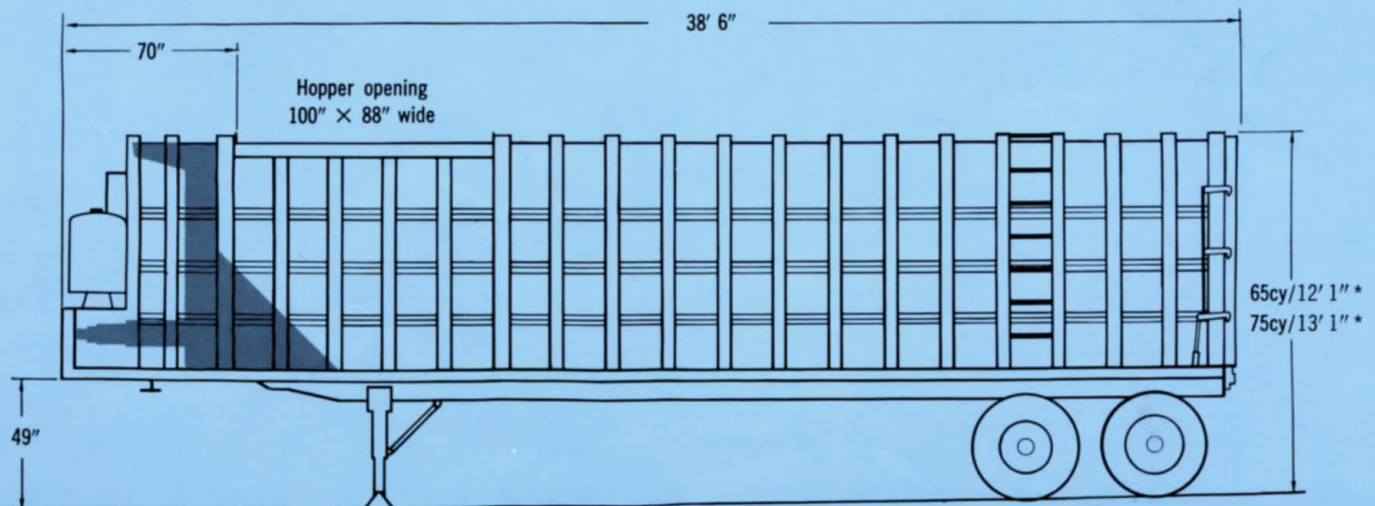


© 1968 Dempster Brothers Inc.  
Knoxville, Tenn.

High tensile steel, rigidly reinforced, plus advanced design gives these trailers an extremely high strength-to-weight ratio assuring maximum legal payloads.

The Dempster Compaction Trailer, available in 65 and 75 cu. yd. models, is used as a transfer station under a chute, or as a traveling collection unit loaded by the high dumping Dempster-Dumpster GRD-304-F2. Material is dumped through the top hopper opening and is forced back and compacted to a fraction of its former volume by action of its packer head which is

actuated by a five-stage hydraulic cylinder powered by an engine driven hydraulic pump mounted on the front deck of the trailer. When full, trailer is hauled to the disposal area by a conventional fifth-wheel tractor, the tailgate is unlatched and the compacted material is ejected by the packer head.

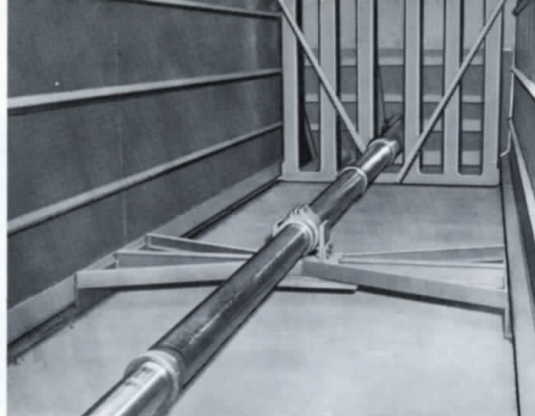


\*Based on 49" fifth wheel height. Add approximately 4" for optional hopper cover.



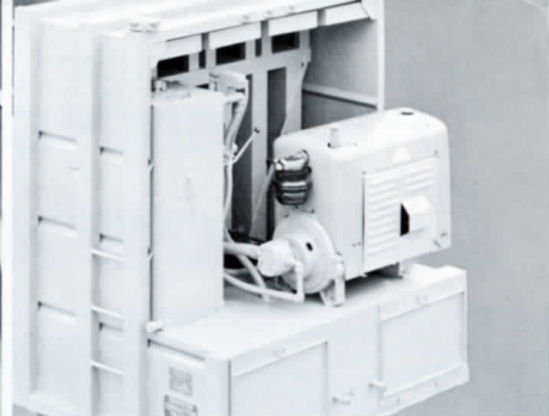
### REAR DOOR LATCHES

Four wedge latches on the bottom and three side latches firmly hold rear door against a double-lip Neoprene gasket to provide a watertight seal. All latches are operated from ground level by a single handle located at side of trailer.



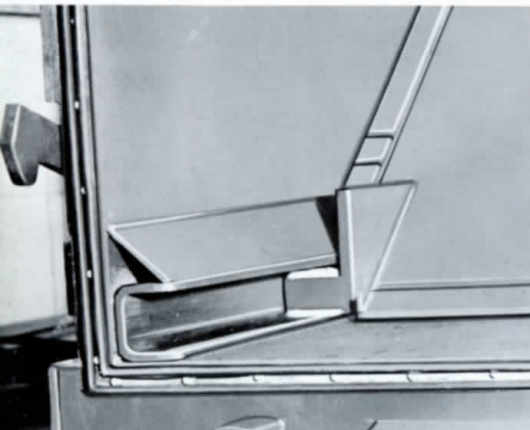
### MID CYLINDER SUPPORT

Patented Mid-cylinder support travels with center section of telescopic cylinder to prevent sag in cylinder during packing and ejection cycles. This unique feature prevents the undue wear experienced with telescopic cylinders which are unsupported.



### POWER UNIT

A hydraulic 47½ GPM gear pump coupled to a water-cooled, 67 HP gasoline engine delivers hydraulic power to the five-stage telescopic packer cylinder. Oil reservoir has 100 gallon capacity and is supplied with 90 gallons anti-wear hydraulic oil.



### GUIDE CHANNEL

Guide channel mounted at side wall provides full width, unobstructed floor and assures maximum stability of packer head. Full length, heavy duty steel guide channel is seam welded to the floor and side wall to assure a water tight interior and reinforced with a diagonal brace for added strength.



### LOADING HOPPER

Large capacity hopper handles largest detachable containers. Two optional hopper covers are available; a chain-driven manually operated type, or a hydraulically operated cover.



### LANDING GEAR

120,000 pound capacity, two speed, retractable landing gear with pad type feet and diagonal bracing provides maximum stability and ease of operation.

## SPECIFICATIONS

### BODY CONSTRUCTION

**Floor:** 10 ga. Hi-tensile steel, reinforced  
**Walls and Top:** 12 ga. Hi-tensile steel, reinforced  
**Door:** 12 ga. steel, reinforced  
**Packer Head:** 10 ga. Hi-tensile steel, reinforced

### TRAILER CONSTRUCTION

**Suspension and Axles:** 40,000 lb. suspension spring and torque arms. Two, 20,000 lb. oil lubricated axles.  
**Landing Gear:** Two-speed retractable, pad feet, 120,000 lb. capacity, diagonal bracing.

### Kingpin:

Standard SAE for 49" high fifth wheel.

### Tires:

Eight, 10:00 × 20 12-ply plus tubes and contour flaps.

### Wheels:

20" Spoke-type.

### Brakes:

Air, 16½" × 7" × ¾" HD axle-mounted with adjusters, service and emergency connections.

### Lighting:

Conforms to Federal Motor Vehicle Safety Standard 108.

### Power Unit Controls:

#### Manual:

From operator's platform.

#### Remote:

Quick-disconnect, push-button type optional for transfer stations

Model	Approx. Weight	OVERALL				Hopper Opening	Hopper Capacity	Sump Capacity	TELESCOPIC CYLINDER		
		Length	Height*	w/Cover*	Width				Stages	Diameters	Thrust
65 cu. yd.	25,200 lb.	38' 6"	12' 1"	12' 6"	8'	100" × 88"	16 cu. yd.	16 gal.	5	8½"—4½"	85,000 lbs.
75 cu. yd.	26,200 lb.	38' 6"	13' 1"	13' 6"	8'	100" × 88"	19 cu. yd.	16 gal.	5	8½"—4½"	85,000 lbs.

\*Based on 49" fifth wheel height.

## DEMPSTER BROTHERS, INC. KNOXVILLE, TENN./Western Division; Compton, California

Dempster Brothers, Inc. constantly seeks ways to improve and upgrade its products. For this reason, design changes are sometimes made. If any dimension or capacity is critical, check with the factory for current specifications.