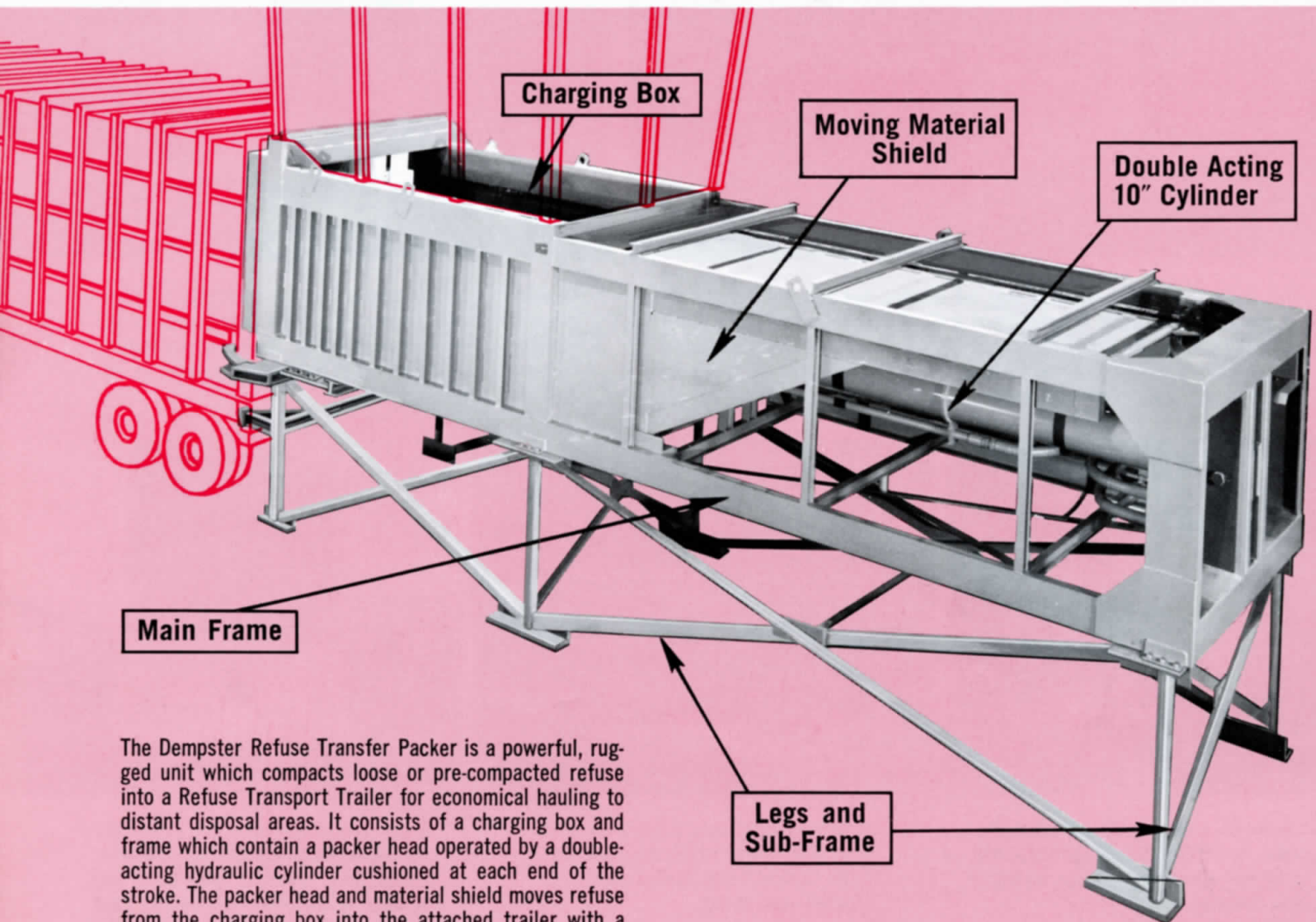


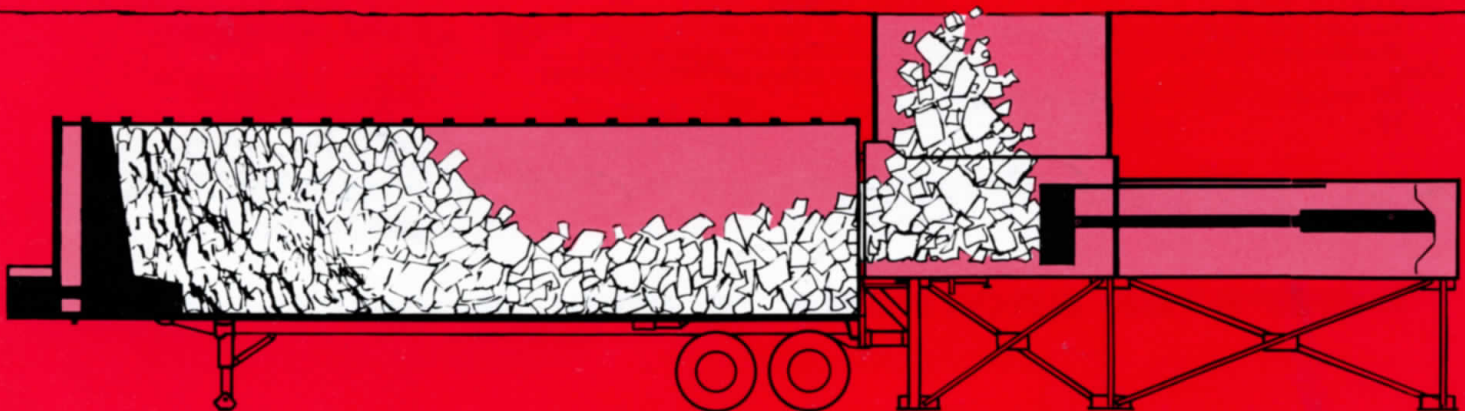
THE DEMPSTER

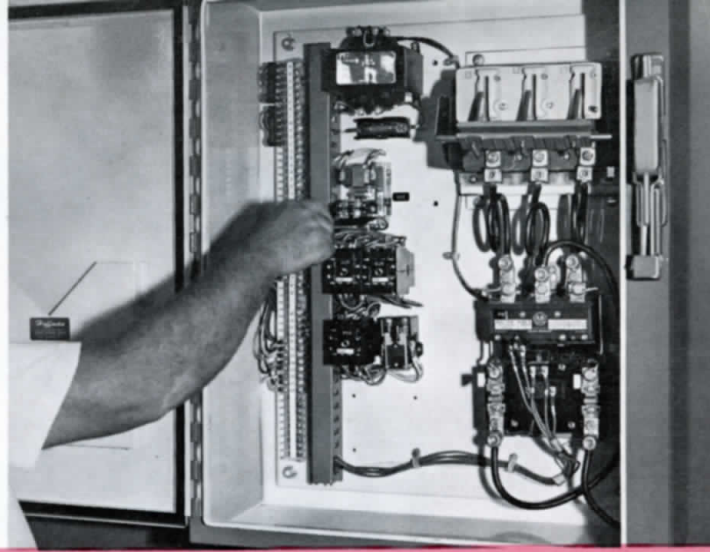
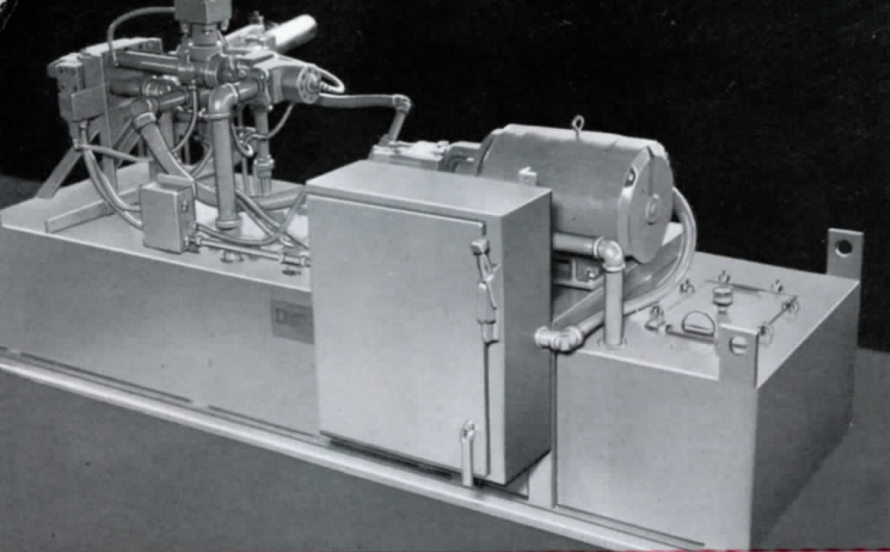
Refuse Transfer Packer



The Dempster Refuse Transfer Packer is a powerful, rugged unit which compacts loose or pre-compacted refuse into a Refuse Transport Trailer for economical hauling to distant disposal areas. It consists of a charging box and frame which contain a packer head operated by a double-acting hydraulic cylinder cushioned at each end of the stroke. The packer head and material shield moves refuse from the charging box into the attached trailer with a force of 127,240 lbs. The hydraulic power unit may be located beneath the packer, or at any convenient remote location. A pressure-sensed hold cycle is featured on all of a variety of pre-programmed automatic cycling patterns, operated by a convenient push button control. Maximum boost pressures for difficult loads, etc. can be achieved by the operator using the manual push button control.

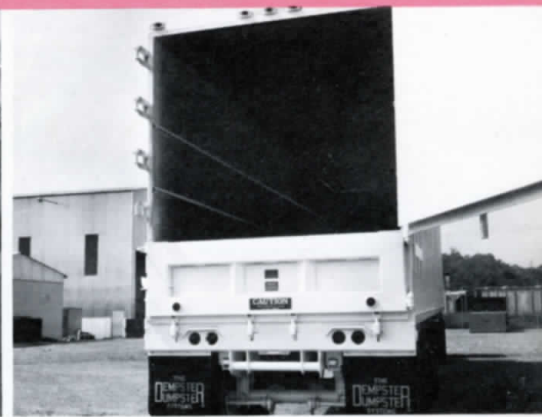
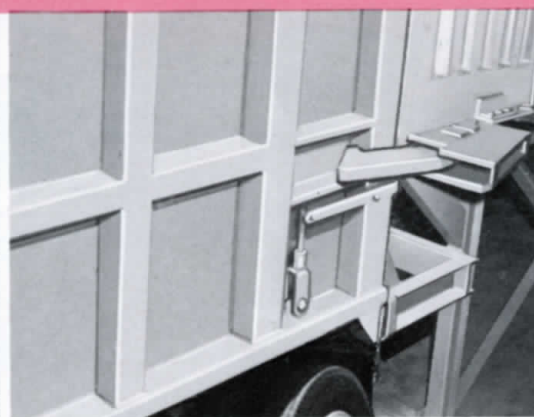
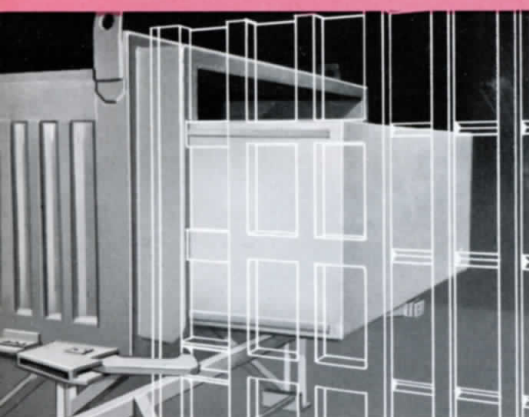
A 65 or 75 cu. yd. Transport Trailer is secured to the Packer by lock hooks. Material, dumped from above, is guided into the charging box by a hopper. The packer head pushes material into the trailer. As the trailer fills, the force of the head crushes and reduces the refuse to a fraction of its former volume. At the disposal area, the trailer's ejection plate, powered by a telescopic cylinder, pushes the material out of the body.





The self-contained power unit may be located beneath the packer, or at any remote location. It consists of a 40 HP motor coupled to a 106.5 GPM pump and all necessary control and check valves. The skid-based 366 gallon capacity oil tank is furnished with 300 gallons anti-wear hydraulic oil, has clean-outs, vents and four 50 GPM intake strainers.

Controls offer push button manual operation or three pre-programmed cycles; automatic continuous cycle, automatic one-cycle and motor stops, or automatic one-cycle and motor runs. Cycle change-over is an easy and simple operation.



The packer head travels well inside the trailer to achieve maximum loads and force the material well away from the door opening.

Automatic lock-hooks engage the trailer as it is backed into loading position. Hard rubber pads absorb shock of coupling operations.

Doors of Refuse Transport Trailer are reinforced for maximum strength. Lower door prevents feed back and spillage of material . . . insures easy closure of top door.

SPECIFICATIONS

OVERALL DIMENSIONS

Length 26' 9½"
Width 118"
Loading height with legs 132¼"

CHARGING BOX

Opening: 122" long × 74¼" wide
Depth: 54⅞"

PACKER HEAD & SHIELD

Four-point guide alignment on head, separate adjustable guides for material shield.

CYCLE

Full cycle approx. 45 sec. displacing 11.02 cu. yds.

CYLINDER

Ten inch diameter × 153" stroke exerting 127,240 lbs. thrust.

POWER UNIT

Self-contained, see description at top of page.

LOCK HOOKS & BUMPER PADS

100,000 psi yield steel. Hard rubber pads.

ELECTRIC CONTROLS

Option of 230 or 460 volt 3-phase, 60 cycle starter and disconnect. Self-contained 115 volt 60 cycle push button control transformer.

OPERATION

Manual push button "Pack," "Return" and "Boost" controls or option of three pre-programmed cycles described at top of page. Pressure-sensed hold cycle control selectively maintains packing pressure to meet changing material resistance.

Where dimensions, packing pressures or electrical power demands are critical to a specific installation, check with factory for possible changes made after publication of this sheet.

DEMPSTER BROTHERS, INC. KNOXVILLE, TENN./California Branch, Compton