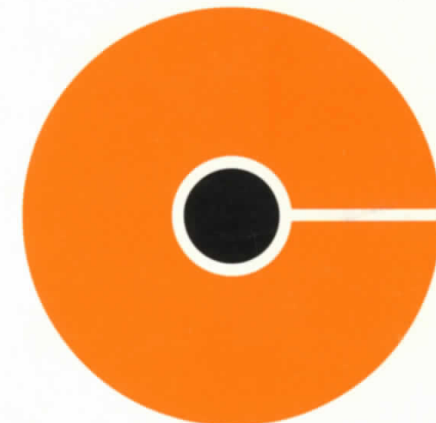


Dempster Dumpster Systems



For the Management, Collection,
Transportation, and Disposal of Waste and Refuse.



How it all began...

Forty years ago, almost all residential, commercial, and industrial waste was stored in metal cans or crude wooden bins to await collection by an open truck. A crew of three or four men and one driver moved slowly along the collection routes throwing heavy cans up to the collectors who stood thigh deep in trash. Cans were emptied by banging them on the side of the truck and then thrown back to crash on the pavement.

It is no wonder that back injury, and minor concussions from falling cans made refuse collection a very hazardous occupation. Almost as bad were the effects of noise, bent

cans, scattered trash from an occasional misdirected can, and the billowing clouds of blowing paper that followed the truck from point to point.

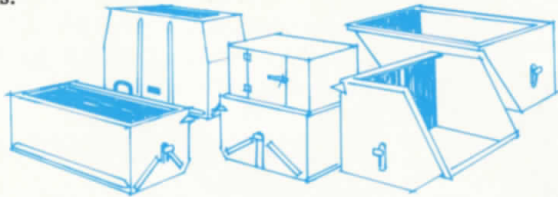
Storage conditions were just as bad. Bent cans lost their lids, scavengers kicked them over and spilled their contents, while dogs, cats, and rats did the rest of the damage, scattering debris over the neighborhood. Occasionally, a fun loving inebriate would break the monotony by setting fire to the contents of the wooden bins.

Ultimately, refuse collection became so expensive that better ways had to be found. The answer was the birth of the detachable

container system pioneered by Dempster in 1934. By enlarging container capacity, and providing enclosed storage to eliminate trash scattering, the Dempster Dumpster System achieved worldwide popularity. One Dempster Dumpster unit and one driver, serviced containers at many different locations and replaced five to six trucks and their crews. Today, Dempster is still recognized as the leader in the refuse equipment industry because of their continued research, engineering, and development of new systems and components to speed, simplify, and lower the cost of solid waste handling.

DEMPSTER DUMPSTER

This is the original system for handling large numbers of containers at many collection points where there is a slow accumulation of material. One truck-mounted unit handles refuse containers up to 15 cubic yard capacity and weights up to 23,000 lbs. Although the concept is over 40 years old, thousands of units are still in service. Dumpster containers are still a favorite with chemical and food processing plants for storing hard-to-handle liquids, sludge, spent catalyst, and other waste material. Water treatment plants and municipalities use Dumpster containers for handling sand, grit, sludge, and pressure vessels for chlorination. Today's Dumpster model is highly advanced over the earlier types, yet they are still interchangeable in service. Several Dumpster models are available with varying capacities to meet many types of applications.



The Dragon has the strongest tipping frame in the industry. ▶



DINOSAUR AND DRAGON

The Dempster Dinosaur, pioneered and developed by Dempster, is another detachable container system that is ideal for handling big capacity and long haul situations. Large storage containers handling loads up to 25 tons are pulled on, pushed off the Dinosaur tipping frame by the smooth hydraulic power of a reciprocating bail. The Dempster Dinosaur can easily handle heavy loads of construction debris, scrap metal, or giant stationary packer containers. It is known throughout the world for dependable, low maintenance operation. A trailer mounted unit, called the Dinotrailer, is also available.

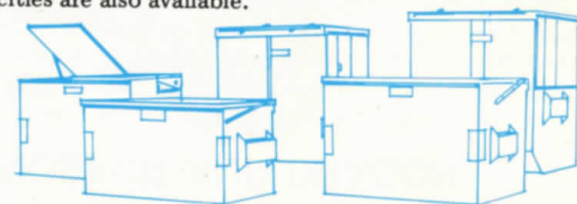
Like the Dinosaur, the Dragon picks up, hauls, and dumps large detachable storage containers up to 45 cubic yards capacity. Unlike the all hydraulic Dinosaur, the Dragon employs a single sheave/cable drive cylinder system with guide rails to accommodate most roll-off containers, including straddle and inside rail types. Its rugged construction and superior design greatly reduce cable wear and high maintenance that normally plague competitive units.





DEMPSTER DUMPMASTER

The Dempster Dumpmaster System combines the best features of enclosed containerized storage with the advantage of high density compaction and handling. One truck-mounted Dumpmaster services many trash and waste accumulation points where material is stored in containers ranging up to 8 cubic yards in capacity. The self-loading Dumpmaster picks up each container, empties the contents into its body, returns the container, then hydraulically crushes the material to a fraction of its former volume. One man and truck handles the entire operation — collection, compaction and hauling, allowing the Dumpmaster to carry the contents of many containers on each trip to the disposal area. Dumpmaster storage containers are available in many different sizes and capacities to meet varying accumulation volumes. Several Dumpmaster body and arm capacities are also available.

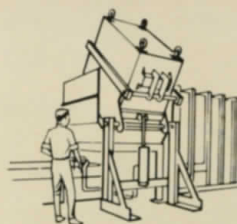


STATIONARY PACKERS

Backed by more than 40 years experience in building heavy duty refuse handling units, Dempster's high performance stationary packers are leaders in the industry with their top operational efficiency, longevity and low maintenance. Dempster compactors are low-investment, high-speed refuse packers that compact and store material in attached reinforced containers. When a container is full of tightly compacted refuse, it is detached from the packer and a Dinosaur or Dragon truck mounted unit picks it up, hauls, dumps and returns the empty container, ready for more storage service.



Through-the-wall loading into a stationary packer gives you tighter security plus an all-weather disposal system that can cut your hauling costs.



Hydraulic Packer Dumper Attachment lifts container and dumps refuse into Stationary Packer. Models available for ground or dock loading.



DEMPSTER ROUTEKING II

When Dempster introduced the RouteKing in 1971, it revolutionized the rear loading packer market. The powerful bi-directional packing force with higher hydraulic pressure increased body payloads as much as 30% over conventional units. RouteKing II is a heavy-duty, high performance unit used in the residential, commercial and industrial markets for high speed, high compaction refuse handling. Three optional dumping attachments are available to handle containers 1 through 10 cubic yards in capacity for maximum flexibility.

ECONOMITE

The Dempster EconoMite is a compact rear loading packer designed to fit lighter weight truck chassis. This provides for low fuel consumption and, when combined with simplified hydraulics, it makes the EconoMite very economical to operate. Its design allows for a short turning radius permitting travel and collection on narrow alleys and other confined areas where access is limited. The Dempster EconoMite is versatile. Three optional dumping attachments are available to handle 1 through 4 cubic yard containers for maximum versatility.



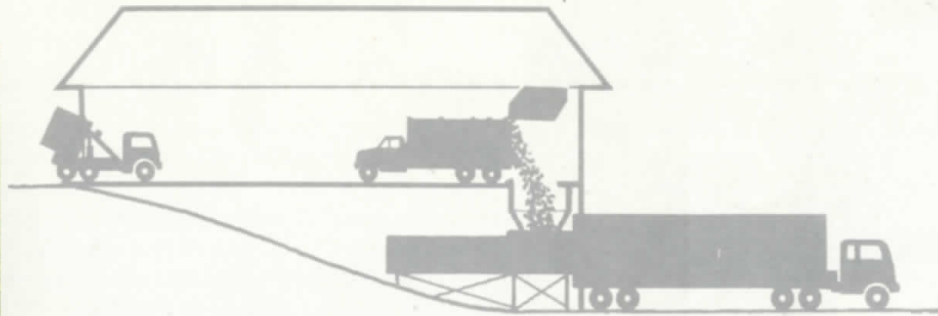
DEMPSTER TRANSFER STATIONS



Push Pit provides temporary refuse storage.



Remotely located, self-contained Power Unit.



When the transfer station concept first became popular in the late 1960's, Dempster had already developed a highly successful mobile transfer station in 1954, using a compaction trailer to follow a high-dump Dempster Dumpster on its routes. Today, a modern, centrally located transfer station can dramatically reduce expensive long hauls and help relieve traffic congestion. You can cut costs and increase efficiency with a Dempster Transfer Station. One Dempster Transport Trailer tightly packed with refuse, can usually carry the contents of six or seven smaller collection trucks on each trip to the landfill. There are many factors to be carefully analyzed and Dempster will help you plan and design a Transfer Station, as simple or complex as your needs and budget dictate. Dempster Dumpster Systems has the experience, planning assistance and equipment to make your station a successful operation in handling refuse.

Heavy-duty hydraulic Transfer Packer.



High tensil steel constructed Transport Trailer.



Two Transfer Packers and two Push Pits provide space for several collection vehicles to unload at one time.



Transport Trailers pick-up from two Transfer Packers.



Refuse is chute fed into an economical SP78-90 Stationary Packer at a low volume Transfer Station.



Single Push Pit with one Transfer Packer.

PLANT FACILITIES

The experienced engineering staff, sales and executive department work together to assure its customers that Dempster products are designed and built to meet the requirements of each type of solid waste system.



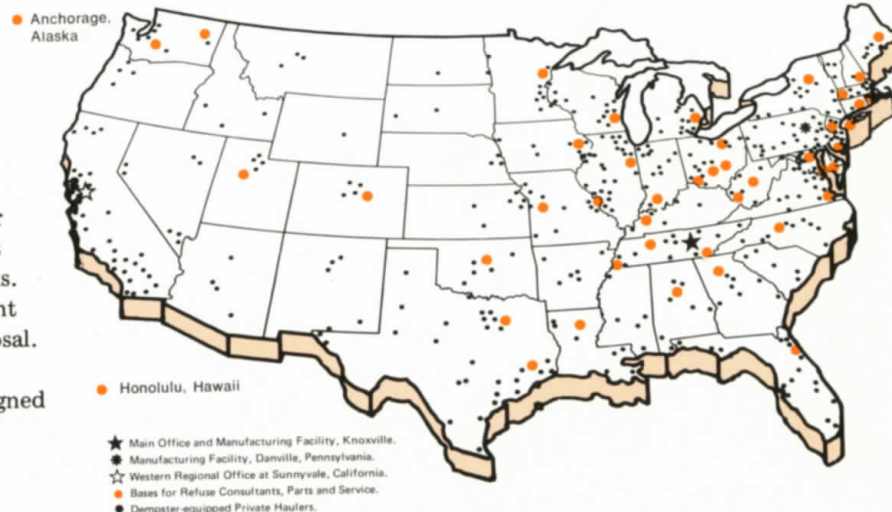
Dempster's manufacturing plant is a well-equipped facility where strict quality control is maintained. In the plant, advanced fabricating, automatic welding, and precision tape-programmed machine tools are used to assure high quality products. A complete parts department gives quick service to thousands of owners and operators of Dempster equipment.

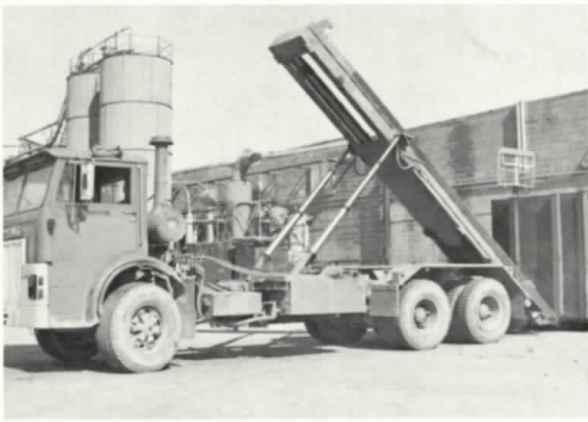
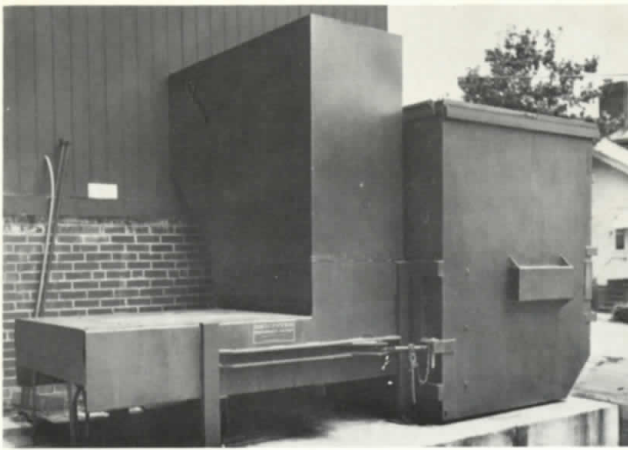

Next time you invest in refuse handling equipment, look to Dempster for engineering excellence and dependable performance. It's the best value you can buy.



DEMPSTER CONSULTANT

To assist owners, operators and prospective purchasers of Dempster equipment, a nationwide network of over 100 highly-trained refuse consultants is maintained. These consultants help the small merchant who uses one container as well as designing and implementing vast complex systems employing many types of equipment and hundreds of trucks. He makes studies and recommendations for the most efficient method of handling refuse for storage, collection, and disposal. Backing the consultant is the industry's largest engineering department and the finest equipment and components designed to solve every type of refuse handling problem.

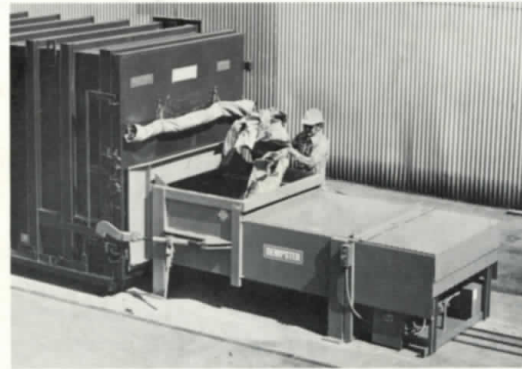


Division of
Carrier Corporation

Dempster Dumpster Systems

Home Office: P.O. Box 3127, Knoxville, Tennessee 37917
With offices in principal cities throughout the world



Product information for the asking!

Use these handy postpaid inquiry Cards to obtain more information on the products and services in this brochure.

FIRST CLASS
Permit No. 238
Knoxville, Tenn.

BUSINESS REPLY MAIL
No Postage Necessary If Mailed In The United States

Postage will be paid by

Dempster Dumpster Systems
Product Information Department
P. O. Box 3127
Knoxville, Tennessee 37917



**Dempster
Dumpster
Systems**

- Please have a Dempster representative call. Rush! Normal
Purpose is:
 Technical information immediate purchase future purchase
 Please send the name of the nearest Dempster private hauler.
 Please send complete information on the:
 Dumpster Dinosaur Dragon Dumpmaster RouteKing
 EconoMite Stationary Packer Containers
 Transfer Stations Transport Trailers Transfer Packers

Name _____ Title _____

Address _____

Company _____ Phone No. _____

City _____ State _____ Zip _____

- Please have a Dempster representative call. Rush! Normal
Purpose is:
 Technical information immediate purchase future purchase
 Please send the name of the nearest Dempster private hauler.
 Please send complete information on the:
 Dumpster Dinosaur Dragon Dumpmaster RouteKing
 EconoMite Stationary Packer Containers
 Transfer Stations Transport Trailers Transfer Packers



**Dempster
Dumpster
Systems**

Name _____ Title _____

Address _____

Company _____ Phone No. _____

City _____ State _____ Zip _____

FIRST CLASS
Permit No. 238
Knoxville, Tenn.

BUSINESS REPLY MAIL
No Postage Necessary If Mailed In The United States

Postage will be paid by

Dempster Dumpster Systems
Product Information Department
P. O. Box 3127
Knoxville, Tennessee 37917



Product information for the asking!

Use these handy postpaid inquiry Cards to obtain more information on the products and services in this brochure.

BUSINESS REPLY MAIL
No Postage Necessary If Mailed In The United States

Postage will be paid by

**Dempster Dumpster Systems
Product Information Department
P. O. Box 3127
Knoxville, Tennessee 37917**

FIRST CLASS
Permit No. 238
Knoxville, Tenn.



Division of
Dempster Corporation
**Dempster
Dumpster
Systems**

- Please have a Dempster representative call. Rush! Normal
Purpose is:
 Technical information immediate purchase future purchase
 Please send the name of the nearest Dempster private hauler.
 Please send complete information on the:
 Dumpster Dinosaur Dragon Dumpmaster RouteKing
 EconoMite Stationary Packer Containers
 Transfer Stations Transport Trailers Transfer Packers

Name _____ Title _____

Address _____

Company _____ Phone No. _____

City _____ State _____ Zip _____

- Please have a Dempster representative call. Rush! Normal
Purpose is:
 Technical information immediate purchase future purchase
 Please send the name of the nearest Dempster private hauler.
 Please send complete information on the:
 Dumpster Dinosaur Dragon Dumpmaster RouteKing
 EconoMite Stationary Packer Containers
 Transfer Stations Transport Trailers Transfer Packers



Division of
Dempster Corporation
**Dempster
Dumpster
Systems**

BUSINESS REPLY MAIL
No Postage Necessary If Mailed In The United States

Postage will be paid by

**Dempster Dumpster Systems
Product Information Department
P. O. Box 3127
Knoxville, Tennessee 37917**

FIRST CLASS
Permit No. 238
Knoxville, Tenn.



Name _____ Title _____

Address _____

Company _____ Phone No. _____

City _____ State _____ Zip _____