

Dempster DumpMaster



From experienced engineering design to first-rate fabrication, the Dempster DumpMaster sets the standard for front loaders. It's performance has been a benchmark for years. Features like high-density compaction increase payloads and reduce trips to the landfill, lowering cost of operation. Durability is excellent. Many popular options are now standard. Compare and you'll choose the Dempster DumpMaster.



Dempster Systems

A Subsidiary of Technology Incorporated



Feature for feature, dollar for dollar, the DumpMaster gives you more for your money.

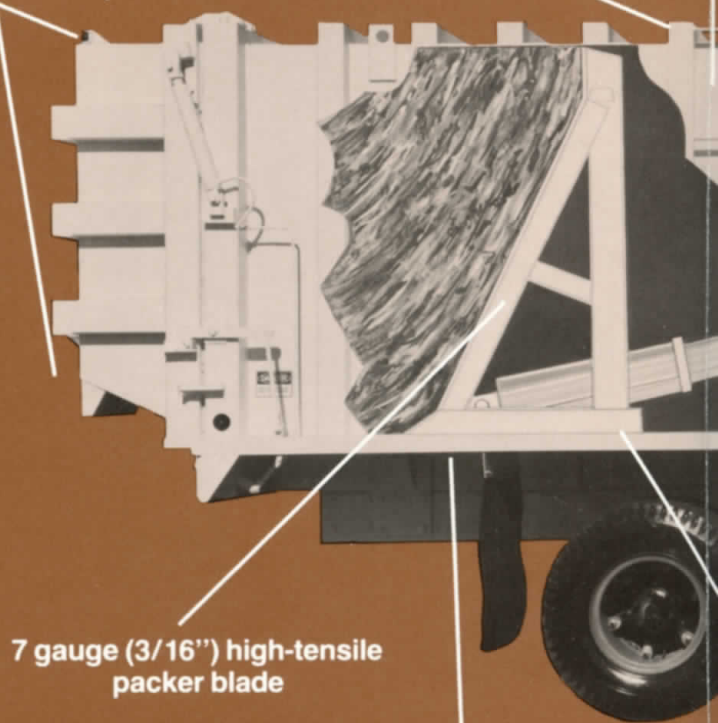
Arms are available in your choice of 4,800 or 8,000 pound gross lifting capacities. Lateral supports stabilize arms during the entire lifting cycle. Other important features include: full length 1/4" steel floor, high tensile steel body, continuous welding for greater strength, Dempster's acrylic finish for longer life, and chevron cylinder shaft packing for reliability and easy maintenance. Dash mounted warning light indicates open hopper cover, arms up or tailgate open, to meet ANSI. These and other high performance features are why the DumpMaster outlasts, outperforms and outpicks all competitive front loaders.

Dempster

Access

Tail lights located on tailgate for better protection

Heavy-duty body reinforcing

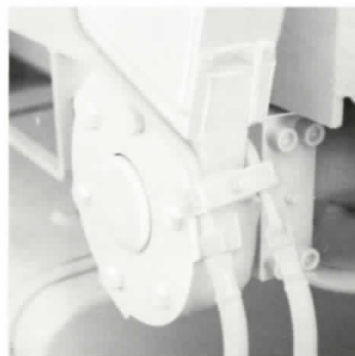


7 gauge (3/16") high-tensile packer blade

Body spring mounted directly to chassis frame



Rubber arm stops
Heavy-duty rubber arm stops prevent arm over-travel.



Bolt-on arms
Arms bolted directly to the body-mounted torque tube for ease of maintenance. Torque tube rotates in replaceable bronze bushings.

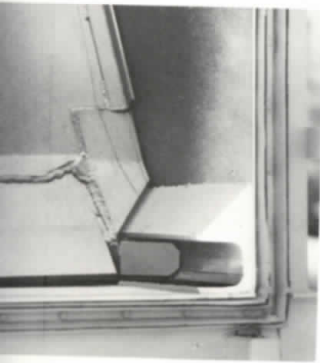
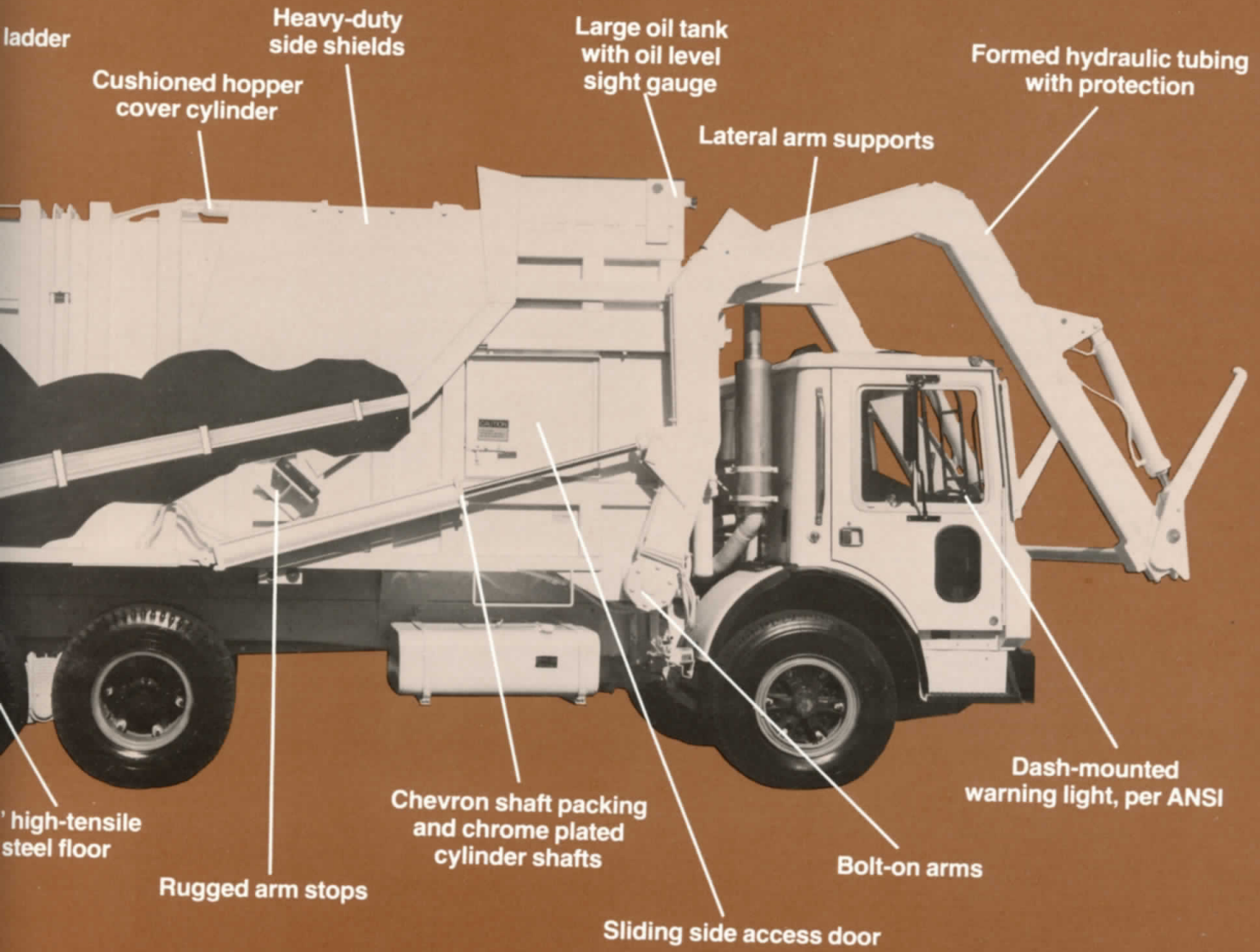


Fork assembly
Fork shaft mounted in split bearings for ease of maintenance.



Dump arm limit device
Mechanical device which makes it impossible to dump containers until packing blade is in the full forward position.

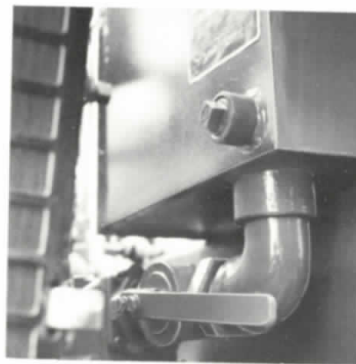
DumpMaster features



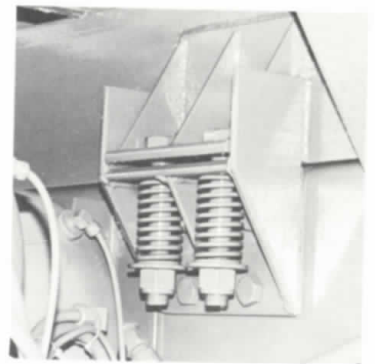
Cleaning guide channels
Hopper blade guides are angled to
keep refuse away from guide
channels and back into hopper,
ensuring smooth jam-free
operation during compaction
cycle. Deflector bar of 6" x 1/4"
provides additional
protection.



Side shields
Bolt-on 1/4" side shields protect
against spillage. Hopper cover
opens beyond vertical for
dumping large containers.



Hydraulic oil tank
74 gallon oil tank provides
hydraulic system cooling for
longer component life and is
equipped with sight gauge, J.I.C.
breather cap and shut-off valve.



Spring tie-down mounting
Body longitudinals mounted
directly to chassis frame with
spring tie-downs for less
maintenance.

DumpMaster condensed specifications

Lifting arms

Capacity: DP-48 — 4,800 pound gross load. DP-80 — 8,000 pound gross load. (Both DP-48 and DP-80 are rated at the center of an 8 cubic yard standard container at ground level.)

Arm construction: One-piece, box-type steel construction, contoured for cab door clearance at all times.

Dumping forks: 1½" high-tensile steel plate welded to a 4" tubular cross member mounted in replaceable steel bushings.

Torque tube: 4½" in diameter, extends full width of compaction body and is mounted in replaceable bronze bushings, attached to the lower portion of the body.

Arm cylinders: Two double-acting cylinders, 4" diameter with 51" stroke (DP-48) and 5" diameter with 55" stroke (DP-80).

Dumping fork cylinders: Two double-acting cylinders, 3½" diameter with 24" stroke (DP-48); and 4" diameter with 24" stroke (DP-80).

Arm stops: Reinforced, rubber, bolt-on stops located on both sides of body.

Cab controls: Manual lever-operated cab controls activate hydraulic valves, which raise, lower, dump and return the container.

Tailgate

Rear door: 25, 31 and 38 HD compaction bodies—10-gauge high-tensile steel reinforced with 3/16" and 10-gauge high-tensile box bracing.

Stor-dor tailgate: Standard on 28, 34 & 41 HD compaction bodies—10-gauge high-tensile steel face sheet and 12-gauge high-tensile steel side sheet, framed and strongly reinforced by 10-gauge and 7-gauge steel channels; contoured to provide up to 3.5 cubic yards of storage area.

Hydraulics: Operating pressure 1600 PSI with a pump capacity of 37 GPM at 1200 RPM.

Body construction

Floor: ¼" high-tensile steel reinforced with 3" structural channel located on an 11" maximum span in the hopper area and 12" in the rear. Two 8" structural channel longitudinals extend full length for mounting directly to steel chassis rails.

Side walls: 12-gauge high-tensile steel reinforced with continuously welded pressed steel channels.

Top: 12-gauge high-tensile steel reinforced by 12-gauge high-tensile box bracing for maximum strength.

Packer head construction: 7-gauge high-tensile steel face sheet heavily reinforced by structural members. Complete cycle time approximately 60 seconds.

Packer head slide: Low-friction, wear resistant, ultra-high molecular weight polymer.

Welding: Floor, side walls and top sheets continuous seam welded.



Model Number	Approx. †† Arm Capacity (Pounds)	Approx. Body & Loader Weight (Pounds)	Overall Dimension			Hopper Opening	Hopper Capacity (Cu. Yards)	Capacity Rear of Hopper (Cu. Yards)	Total Capacity (Net Cu. Yards)	Sump Capacity (Gallons)	Packing Cylinder	Packing Force (Pounds) @ 1600 PSI	Loading Cycle Time (Seconds) ††††
			Width	Height †††	Length								
DP48-25 HD	4,800	17,200	8'	8' 1"	31' 7"	87" x 80"	8.9	15.5	24.4	21	8 1/2" x 13 1/2" 5 Stage	90,800	22
DP48-28 HD †	4,800	17,600	8'	8' 1"	33' 6"	87" x 80"	8.9	18.3	27.2	21	8 1/2" x 13 1/2" 5 Stage	90,800	22
DP48-31 HD	4,800	18,400	8'	8' 1"	35' 3"	87" x 80"	8.9	21.0	29.9	21	9 1/2" x 16 1/2" 6 Stage	113,000	22
DP48-34 HD †	4,800	18,800	8'	8' 1"	37' 3"	87" x 80"	8.9	23.9	32.8	21	9 1/2" x 16 1/2" 6 Stage	113,000	22
DP48-38 HD	4,800	19,200	8'	9' 4 1/2"	35' 3"	87" x 80"	11.3	25.3	36.6	21	9 1/2" x 16 1/2" 6 Stage	113,000	22
DP48-41 HD †	4,800	19,800	8'	9' 4 1/2"	37' 3"	87" x 80"	11.3	28.8	40.1	21	9 1/2" x 16 1/2" 6 Stage	113,000	22
DP80-25 HD	8,000	17,700	8'	8' 1"	31' 7"	87" x 80"	8.9	15.5	24.4	21	8 1/2" x 13 1/2" 5 Stage	90,800	32
DP80-28 HD †	8,000	18,100	8'	8' 1"	33' 6"	87" x 80"	8.9	18.3	27.3	21	8 1/2" x 13 1/2" 5 Stage	90,800	32
DP80-31 HD	8,000	18,900	8'	8' 1"	35' 3"	87" x 80"	8.9	21.0	29.9	21	9 1/2" x 16 1/2" 6 Stage	113,000	32
DP80-34 HD †	8,000	19,300	8'	8' 1"	37' 3"	87" x 80"	8.9	23.9	32.8	21	9 1/2" x 16 1/2" 6 Stage	113,000	32
DP80-38 HD	8,000	19,700	8'	9' 4 1/2"	35' 3"	87" x 80"	11.3	25.3	36.6	21	9 1/2" x 16 1/2" 6 Stage	113,000	32
DP80-41 HD †	8,000	20,300	8'	9' 4 1/2"	37' 3"	87" x 80"	11.3	28.8	40.1	21	9 1/2" x 16 1/2" 6 Stage	113,000	32

† 28 HD, 34 HD & 41 HD bodies include Stor-Dor Tailgate

†† Rated for 8 Yd. container pickup at ground level

††† For total height, add height of truck chassis and stringer

†††† Add 3.8 Seconds for Hydraulic Hopper Door

Bulletin No. DM-1885
All specifications
and equipment
subject to change
without notice



Dumpster Systems

A Subsidiary of Technology Incorporated

Printed in U.S.A.
CA 1962-5M8/82 Copyright © 1982

P.O. Box 3127, Knoxville, TN 37917
Phone: 615/637-3711, Telex: 55-7478, Cable: Dumpster

ClassicRefuseTrucks.com Library