



# PHOENIX

HESTAIR

PHOENIX

*Where seconds count and reliability reigns supreme...*

## **PHOENIX 2M Series**

(Three sizes  
8m<sup>3</sup>, 10m<sup>3</sup>, 12m<sup>3</sup>)

***Slim, powerful, manoeuvrable  
Payloads from 4½ - 7½ tonnes***



The **original** narrow 16 ton GVW refuse collector gives you unbeatable access without sacrificing payload. The slim compact vehicle eases itself into previously inaccessible locations and manoeuvres around obstacles other narrow vehicles might find impossible. Turning circles start at a mere 13.4 metres (44ft.). The strength and durability of the Phoenix bodywork is fast becoming legendary.

## **PHOENIX MAJOR**

18m<sup>3</sup>, 20m<sup>3</sup>, 23m<sup>3</sup>  
and 28m<sup>3</sup> capacities

***Fast Loading, Large Appetite,  
Quick Discharge.***



The natural progression from the UK's No.1 Phoenix 15 was the Phoenix Major. Large payloads coupled with the renowned Phoenix reliability and low maintenance costs make the 24 ton version a natural success. Highly manoeuvrable with wheelbases less than some 2 axle vehicles, the Phoenix Major has brought double figure payloads into the reach of almost every domestic refuse collection round.

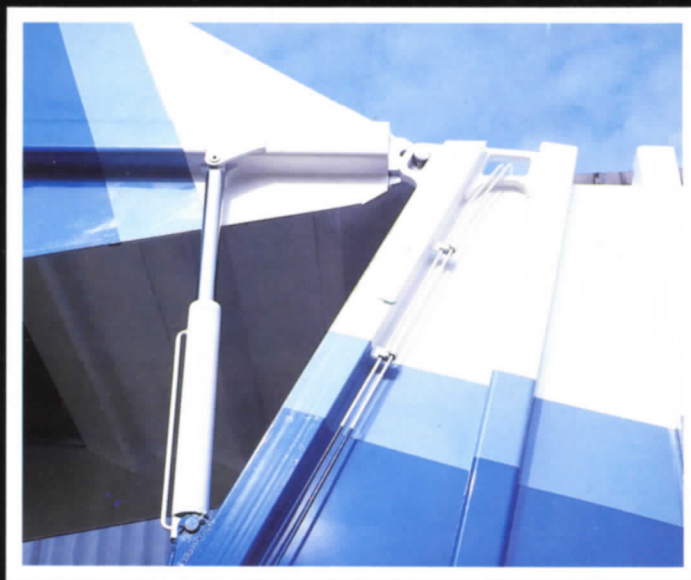


# The Phoenix features others

## CAB CONTROLS



## DISCHARGE CONTROL STATION



## SAFETY

### Cab Controls

Convenient in-cab master control station prevents operator error from the driver. All auxiliary switches for lights, beacons etc, are contained in the same module.

### Discharge Control Station

All controls grouped for operator convenience and safety. Easy plug in gauges allow operating pressures to be checked at roadside. Also contains single cycle button to clean out rubbish from the raised hopper when at the tip.

### Safety

- Full width emergency stop bar at knee height.
- Shielded system controls prevent accidental operation.
- All lift rams have in-built fail safe locking mechanism.
- No shear trap along rave rail.
- Full width packing plate minimises risk of projectiles when packing.
- No need for operators to approach rear of the vehicle during discharge due to nose cone free ejector barrier.
- Cycling of hopper mechanism to clear raised hopper.
- Introduction of automatic tailgate locks.

## RELIABILITY

### Reliability

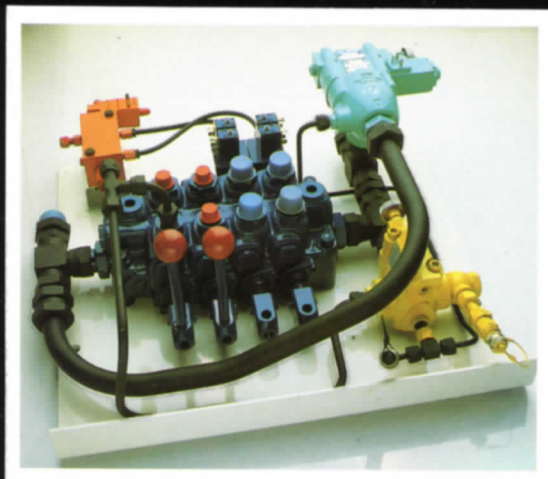
All body, hopper and packing mechanism parts are of high tensile steel and are continually welded for strength and durability. To our knowledge no hopper floor has ever been replaced due to wear. An authoritative report on maintenance costs showed the Phoenix to be up to 50% less than most of its rivals.

# rs are still trying to match!

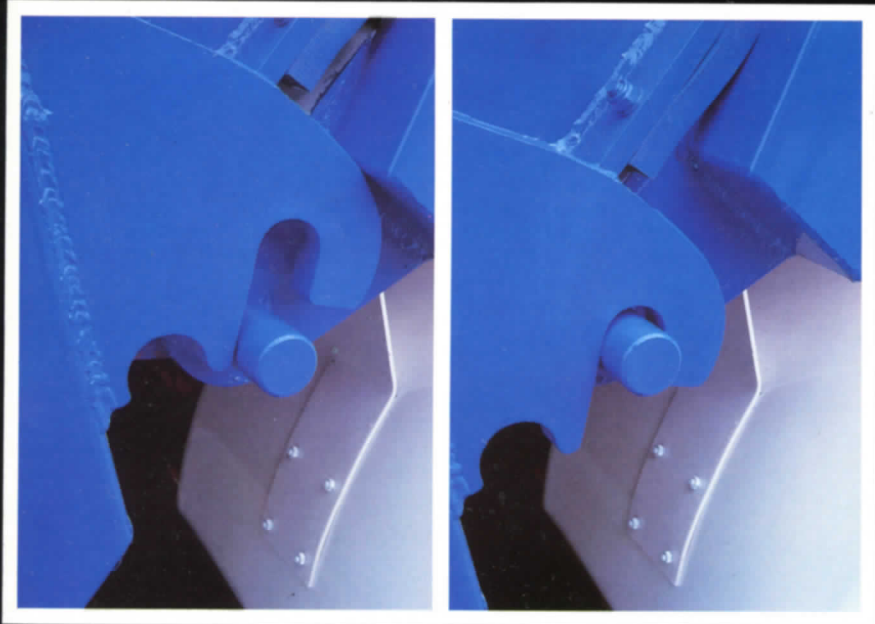
## VERSATILITY



## MODULAR HYDRAULIC TRAY



## CONTROLS



## THE PHOENIX

"More Phoenix refuse vehicles are sold in the UK than any other model."

"Hestair has been awarded the Queens Award for export as a result of selling the Phoenix into over 25 countries."

"The Phoenix is the only UK specialist municipal refuse vehicle designed and built in volume by a UK owned company."

## AUTOMATIC TAILGATE LOCKS

### Versatility

All Phoenix vehicles can be adapted to pick up -

- Skips
- Eurocarts
- Paladins
- All square bins
- All 'wheeled' European bins.

Our range of mechanisms offered will pick up all these bins individually or in the combination required by the user. Most of our bin lifts offer quick and easy removal for conversion to domestic collection and some may be used for both bin lift and domestic work at the same time.

### Modular Hydraulic Tray

The modular tray is still unique to the Phoenix. It houses all the necessary hydraulic components, is easily removable (less than ½hr) and can be changed, if necessary, at the roadside. Phoenix hydraulics are simple to maintain and the reliability is an important factor in reducing vehicle fleet sizes.

### Electrical Controls

All electrical systems operate from a single loom and a main control box. All wires and terminals are colour coded and numbered thus reducing the need for highly skilled electricians. All buttons are water-tight and the mechanism can only be operated from the rear of the vehicle. The Phoenix electrics are the simplest to operate and maintain.



**THE PHOENIX operates in:**

London

Amsterdam

Oslo

Hong Kong

Melbourne

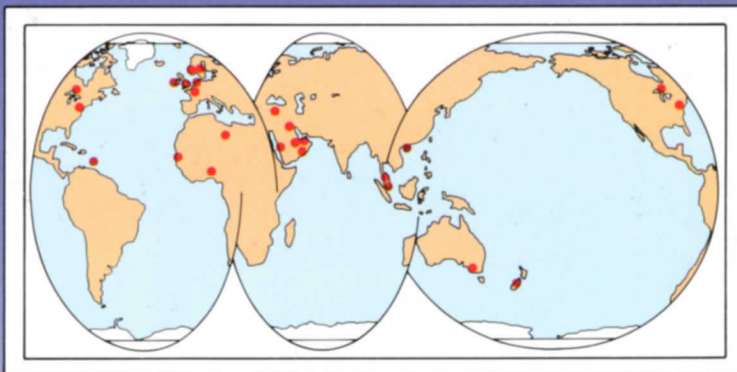
Toronto

New York

Jeddah

Singapore

*to name but a few.*



- British Designed
- British Built
- British Owned Company
- Britain's No.1 Refuse Vehicle

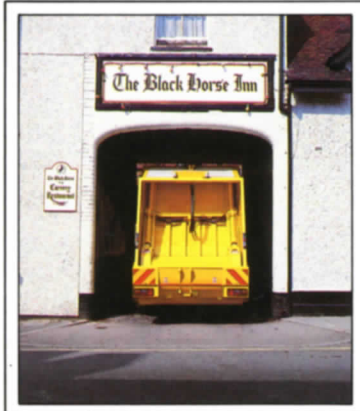


**BRITISH DESIGN AT ITS BEST**

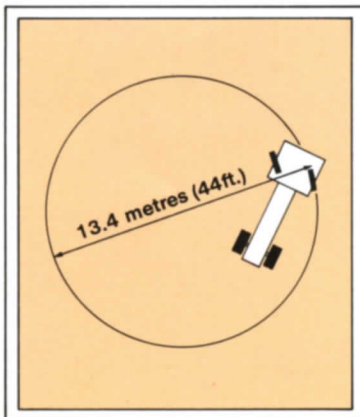


# DENNIS - The leader in Municipal Chassis Design

## 2M Series



**Outstanding Manoeuvrability  
at 16 Tonnes - unrivaled**



**Turning Circle,  
unmatched**



**60° Cab Tilt  
unbeatable access**



**Walk-in Cab,  
none better**

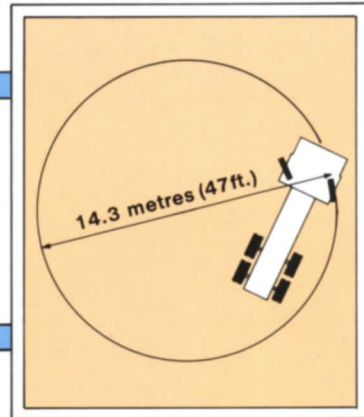


**Daily Service Access,  
none easier**

## 6 x 4 Series



**V8 Engine Power,  
others can't fit it**



**24 Ton Turning Circle,  
the envy of all**



**Dennis Eagle Limited**

Heathcote Way, Heathcote Industrial Estate, Warwick CV34 6TE.  
Telephone: 0926 316000 Telex: 31450