

**solid wastes
control:
the E-Z Pack[®]
systems approach
starts with
E-Z Pack products.**



Peabody

Solid Wastes
Management

Put our strength behind you.

The Proven Authority on Solid Wastes Handling Equipment and Systems

E-Z Pack[®] Total Systems

the capability, products and engineering
for totally modern waste handling requirements.

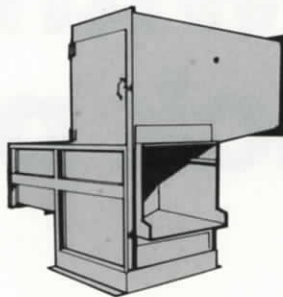
Total waste handling systems capability...

... that's the way we do things at Peabody. Because of our experience and capability, we make more refuse removal equipment and systems than anyone in the world. The same capability and product diversity allows us to customize waste handling systems to match specific needs, like yours, with resulting efficiency in installation, maintenance and costs.

We're doing a job all over the country. Contact us soon and we'll put our strength behind you.

Stationary Compactors

One of the broadest lines in the industry... from 1/2 yd. to 6.7 cu. yds.; includes exclusive Dry Pack™ sloped-sill models.



Mobile Equipment

Front loaders—high compaction; 25, 30 and 35 cu. yd. bodies; lift up to 7500 lbs.; the recognized leader in the field.

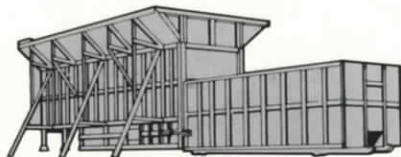
Rear loaders—the family of rear loaders—the M200, C250 and HC300 (high compaction) offer 2, 2½ and 3 cu. yd. hoppers, capacities to 25 cu. yds.

Side loaders—the newest addition is the HCSL-1410 (high compaction) with 14 cu. yd. capacity for efficient pick-up operations.



Transfer Stations

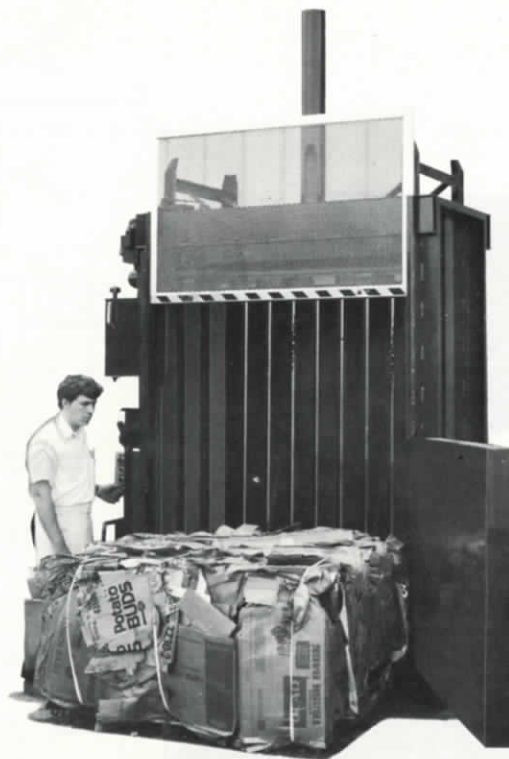
Unitized Transfer Station—Compact, movable, low freight and erection costs. For high refuse generation problems where full-sized transfer station would be impractical. 6.3 cu. yd. compactor, roll-off container, and tilt frame truck, or compactor trailer.



E-Z Pack[®]

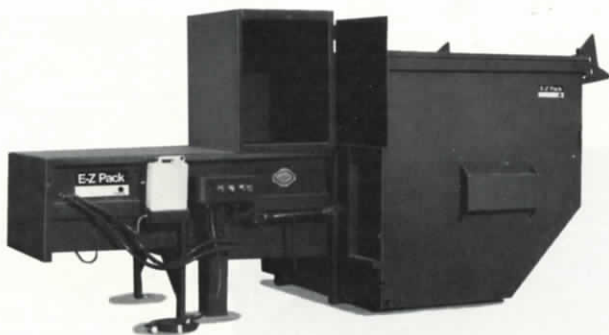
Resource Recovery:

A combination system...one for handling recycleable material, the other to handle high liquid content waste.



The E-Z Bale[™] Vertical Down-Stroke Baler

Solidly packed bales of corrugated or paper up to 1,000 pounds with this safe, easy to use baler. Just dump recyclables into the opening, activate controls and watch 40,000 pounds of pressure go to work. When the 1.8 cubic yard baling chamber is full, simply open the lower door, put the ties in place and secure. After ejection, the tied off bale is picked up and carried away for recycling. Helps keep work areas cleaner, too.



The E-Z Pack Dry Pack[™] Compactor

Take care of all your other refuse material with a .5 Series Dry Pack unit. Especially designed to handle high-liquid content waste. Without mess. All the liquids run into the container . . . not onto the ground. Fast, safe, convenient. Operating from a standard 115V outlet and packing into standard containers.

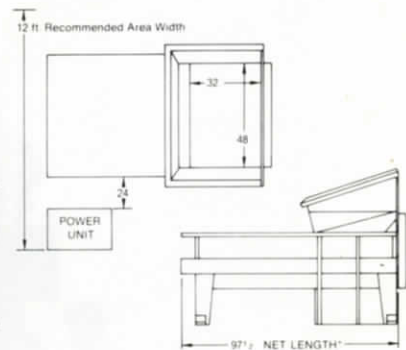
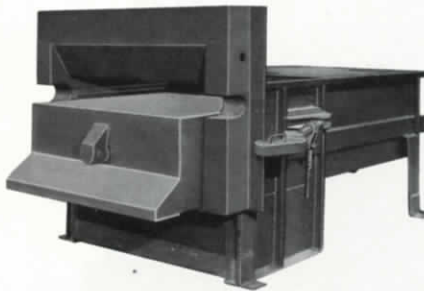
E-Z Pack[®] Stationary Compactors:

a size for any design demand...
industrial, commercial, institutional, residential

1 Cubic Yard Compactor

This versatile, all-around stationary compactor can be fed by thru-the-wall chute, or directly into the charge box, allowing space previously used as a "loose trash" room to be utilized for more profitable use. Deep ram penetration assures maximum packing density.

Compaction Force 25,000 lbs.
Length of Stroke 46"
Cycle Time 31 secs.
Charge Box (top)
Opening Dimensions 48" x 32"
Total Weight 3900 lbs.

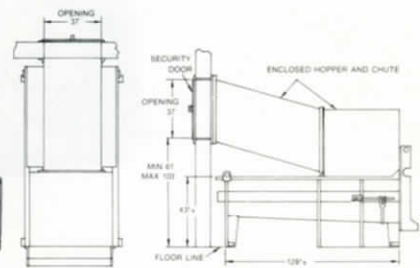
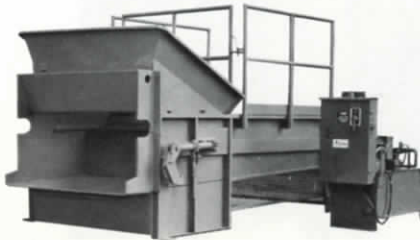


*Add compactor net length to receiving container net length to determine overall length when both units are combined.

2.3 Cubic Yard Dry Pack™

The big one. Same sloped-floor design concept as the 1/2 yard model, but more powerful. Handles the larger high-liquid-content wastes. Rapid cycle time packs more refuse faster. And it has the deepest ram penetration of the Dry Pack™ compactor series. Ideal for corrugated.

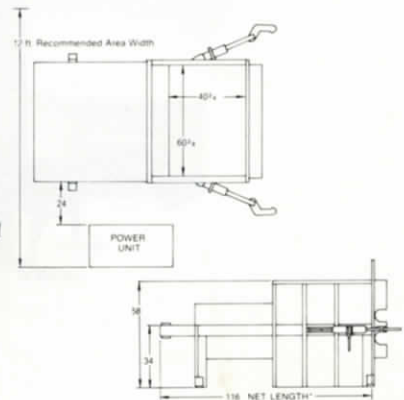
Compaction Force 56,000 lbs.
Length of Stroke 65"
Cycle Time 42 secs.
Charge Box (top)
Opening Dimensions 60 3/8" x 40"
Total Weight 6150 lbs.



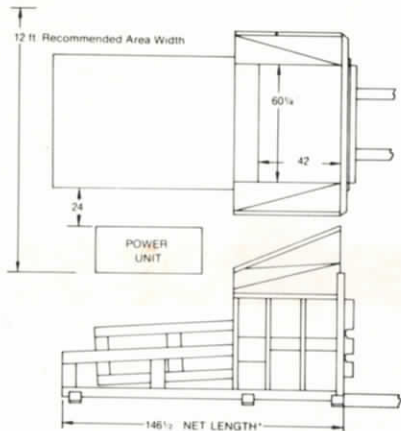
2.5 Cubic Yard Compactor

An ideal solution to high-volume commercial or industrial solid waste problems. Extra-large charge box and high compaction force assures high-density reduction of nearly all types of solid waste.

Compaction Force 39,000 lbs.
Length of Stroke 52 3/4"
Cycle Time 40 secs.
Charge Box (top)
Opening Dimensions 60 3/8" x 39 1/8"
Total Weight 5500 lbs.



*Add compactor net length to receiving container net length to determine overall length when both units are combined.



*Add compactor net length to receiving container net length to determine overall length when both units are combined.

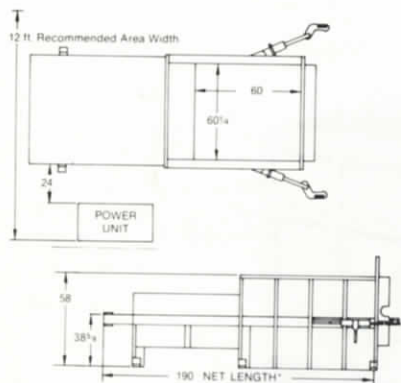


3 Cubic Yard Compactor

Engineered for heavy-duty, high-volume refuse compaction use. Waste can be collected at various points throughout the facility, then brought to the compactor for fast, easy reduction. Keeps working areas cleaner, safer.

- Compaction Force 56,000 lbs.
- Length of Stroke 65"
- Cycle Time 42 secs.
- Charge Box (top)
- Opening Dimensions 60 1/4" x 42 1/2"
- Total Weight 9750 lbs.

There's also a heavy-duty 3 yd. with a 90,000 lb. compaction force.



*Add compactor net length to receiving container net length to determine overall length when both units are combined.

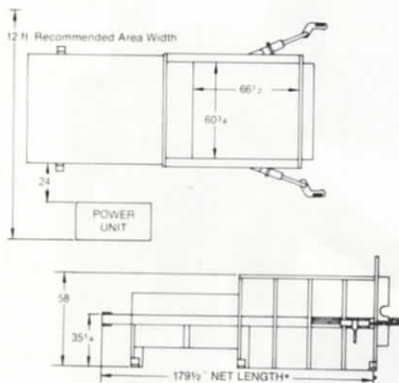


3.8 Cubic Yard Compactor

Engineered for heavy commercial and light to medium industrial applications. Compatible with most major brands of containers used by private haulers. Compaction force of 28 tons handles a wide variety of high volume refuse and solid waste.

- Compaction Force 56,000 lbs.
- Length of Stroke 82 3/4"
- Cycle Time 56 secs.
- Charge Box (top)
- Opening Dimensions 60" x 60 1/4"
- Total Weight 10,200 lbs.

There's also a heavy-duty 3.8 cu. yd. model with a 90,000 lb. compaction force.



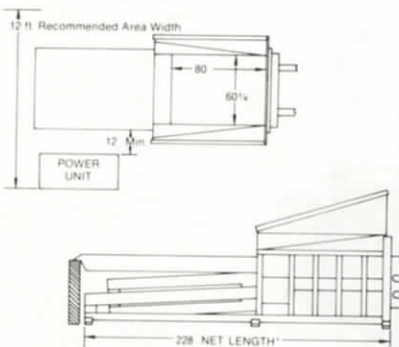
*Add compactor net length to receiving container net length to determine overall length when both units are combined.



4 Cubic Yard Compactor

High compaction force for commercial and medium to heavy industrial application. Compatible with most major brands of containers used by private haulers. Separate power pack can be mounted adjacent to unit or away from it for remote control.

- Compaction Force 56,000 lbs.
- Length of Stroke 82 3/4"
- Cycle Time 49 secs.
- Charge Box (top)
- Opening Dimensions 66 1/2" x 60 3/8"
- Total Weight 7200 lbs.



*Add compactor net length to receiving container net length to determine overall length when both units are combined.



5 Cubic Yard Compactor

For heavy industrial use. Forty-five tons of compaction force easily reduces the largest pallets and timbers. Deep ram penetration offers dense compaction. Perfect for larger industrial facilities with heavy refuse generation.

- Compaction Force 90,000 lbs.
- Length of Stroke 108"
- Cycle Time 38 secs.
- Charge Box (top)
- Opening Dimensions 60 1/4" x 80"
- Total Weight 14,900 lbs.

For heavy-duty industrial applications, there's also a 6.7 cu. yd. compactor.

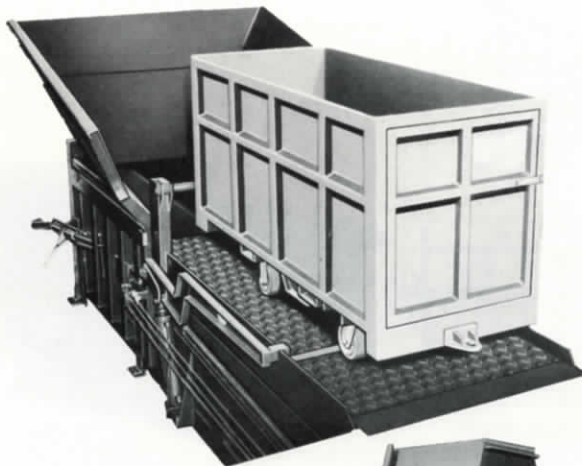
E-Z Pack[®]

Optional Equipment:

expanding the utility of your
E-Z Pack stationary compactors.

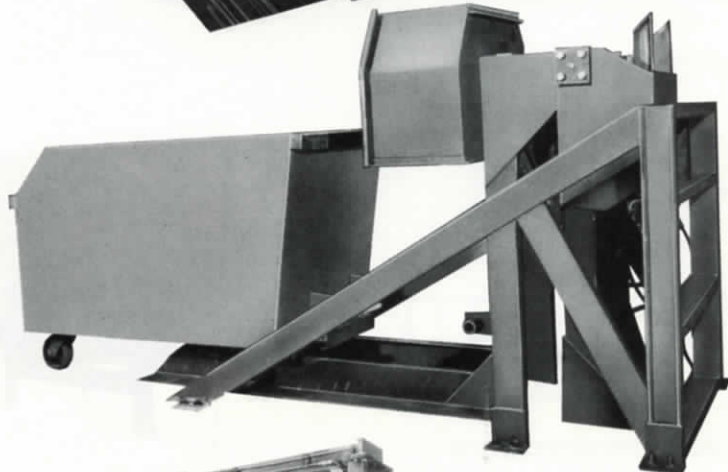
Rear Dock Level Dumper

A 3500 lb. capacity dock dumper, handling 2 to 5 cu. yd. in-plant trash carts, will lower refuse handling costs and increase compactor efficiency. Here's how it works: The cart is automatically locked onto the lift bar. Then the cylinder rotates over charge-box hopper for emptying and the empty cart is set back down at floor level . . . all in less than 20 seconds.



Side Dumper/Ground Level Dumper

Increases utilization of compactor or container through greater location versatility. Available compactor-attached (rotates carts from ground level over compactor) or free-standing (rotates carts from ground level to dump position over nearly any kind of open-top container). Two models for both . . . 2000 and 4000 lb. capacity.



3.8 Cubic Yard Pre-Crusher Compactor

Assures maximum density in reduction of high-cube refuse. A special guillotine bulkhead offers a non-distorting surface for crushing bulky metal, fiber, glass or corrugated refuse prior to compaction in container. Specifications: Compaction Force: 56,600 lbs., Length of Stroke: 82 $\frac{3}{4}$ " , Cycle Time: 44 secs., Charge Box (top) Opening Dimensions: 60 $\frac{1}{4}$ " x 60", Total Weight: 13,100 lbs.



E-Z Pack[®]

Compactor Options:

**more optional equipment that
increases waste handling efficiency.**

Security Chute and Door

Consists of a totally enclosed through-the-wall chute for installation between the building and the compactor charge box. Commonly used by department stores and supermarkets, this chute helps prevent theft or vandal entry into the building.

Outside Controls for Load Pinning

NEMA oil-tight enclosure with remote control switch located on charge box outside wall. Allows operator to have visual pin-off ram control when pinning load for container removal and dumping.

Hoppers

Sturdy, bolt-on hoppers provide extra storage capacity for compactor loading. They can be mounted for loading from the rear or from either side of the compactor.

Dock Ramp, Ram Cover

Walk-on or drive-on dock ramps are available for different dock heights for all models.

Oil Immersion Heater

Maintains temperature of oil in reservoir tank to counteract sluggish operation of hydraulic system in cold weather.

Sanitizer Spray Kit

Effectively controls odor and bacteria problems by spraying contents within the charge chamber with each stroke of the ram.

Sonac Sensing Device

Automatically starts the operation cycle when refuse within the charge chamber interrupts a sound beam. Available only on fully chuted operations for safety.

Key-Operated Start Switch

Provides greater security over compactor operation by requiring use of pass key in control box before "start" push buttons will operate. Also offers key operated boost pressure control for pin-off and key lock "dead man" switch for safety.

E-Z Pack[®] Mobile Equipment:

a total high compaction line
for private and public collection systems.

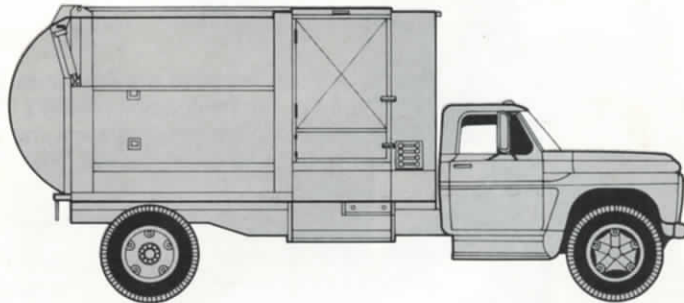
Front Loaders

E-Z Pack front loaders are the acknowledged leaders in the field after years of hard use. The new high compaction models allow haulers to increase their number of pick-ups and save money. One man can operate an E-Z Pack front loader for low cost, yet speedy service. The large capacity units lift up to 7500 pounds with ease. Available in 25, 30 and 35 cubic yard body sizes. Use with E-Z Pack containers of 1 through 8 cu. yds. at convenient pick-up points.



Side Loaders

For reliability and economy, the new HCSL-1410, high compaction side loader, is your best choice. Unique ram geometry and ejection give this unit greater capacity and simple operation for a driver and pick-up crew. Capacity . . . a full 14 cu. yds. A great side show for almost every hauling situation, especially curbside.



Rear Loaders

The E-Z Pack family of rear loaders offers maximum performance and versatility for every hauling operation. Starting with the big HC300 that offers high compaction and a 3 cu. yd. hopper to the C250 and M200, the E-Z Pack line has total refuse handling ability. The C250 and M200 offer 2½ and 2 cubic yard hoppers; models offer either 16, 20 or 25 cubic yard body capacities.



E-Z Pack[®] Tilt-Frame Units:

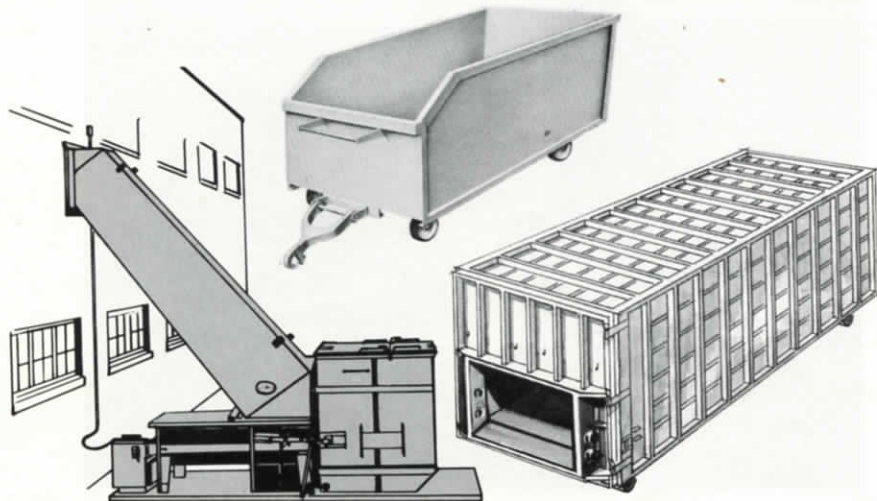
for efficiency and economy
with high volume waste removal.



One man and one truck do the same hauling job that normally takes several men and a fleet of trucks. It's the most versatile carrier developed . . . with standard or inside-outside tilt frame models, capacities of 30,000 and 50,000 pounds. For hauling refuse, scrap, cargo. For use with open top or closed top containers.

E-Z Pack[®] Containers and Carts:

for use with all E-Z Pack
mobile and stationary equipment.



Roll-off containers are constructed of hi-tensile steel and are available in 15 through 42 cu. yd. capacities in open top models as well as receiver containers for use with all E-Z Pack compactor models. Front loader containers available in 1 through 8 cu. yd. capacities.

E-Z Pack Trash Carts are available in 5 models designed specifically for use with the Dock Dumper output on E-Z Pack stationary compactors. Capacities from 2 through 4 cu. yds.

E-Z Pack[®] Transfer Stations:

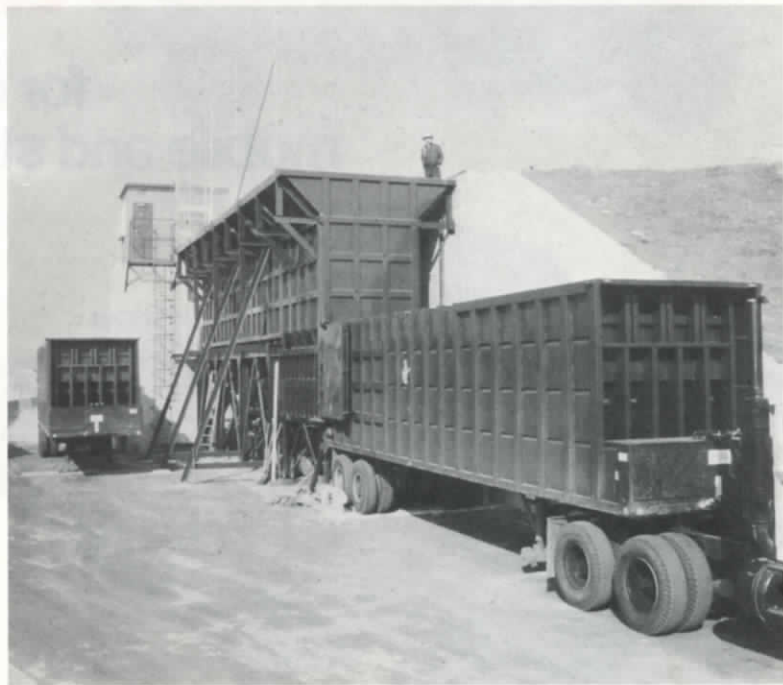
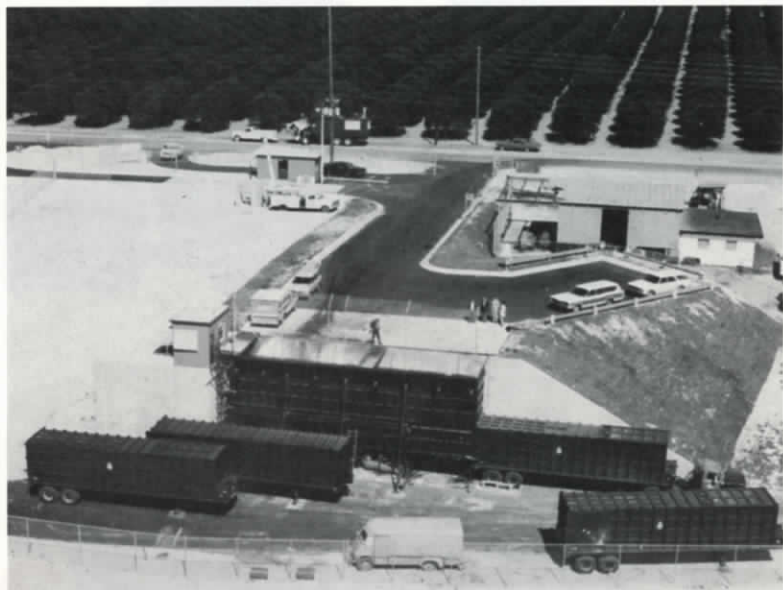
any or all E-Z Pack equipment at work... or a specially engineered system to meet your demands.

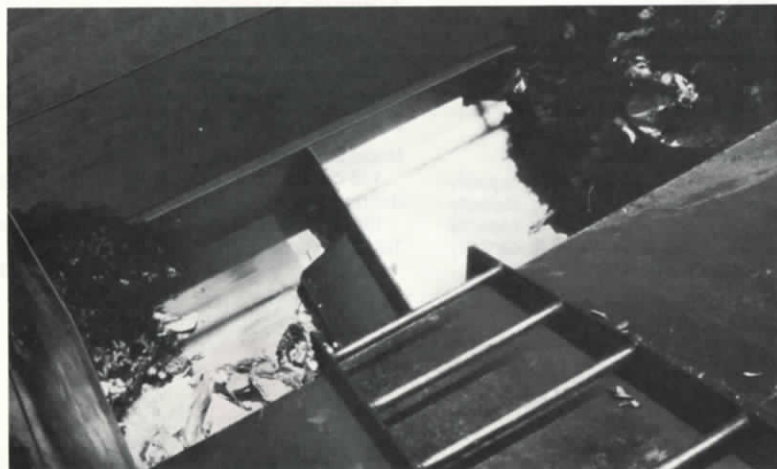
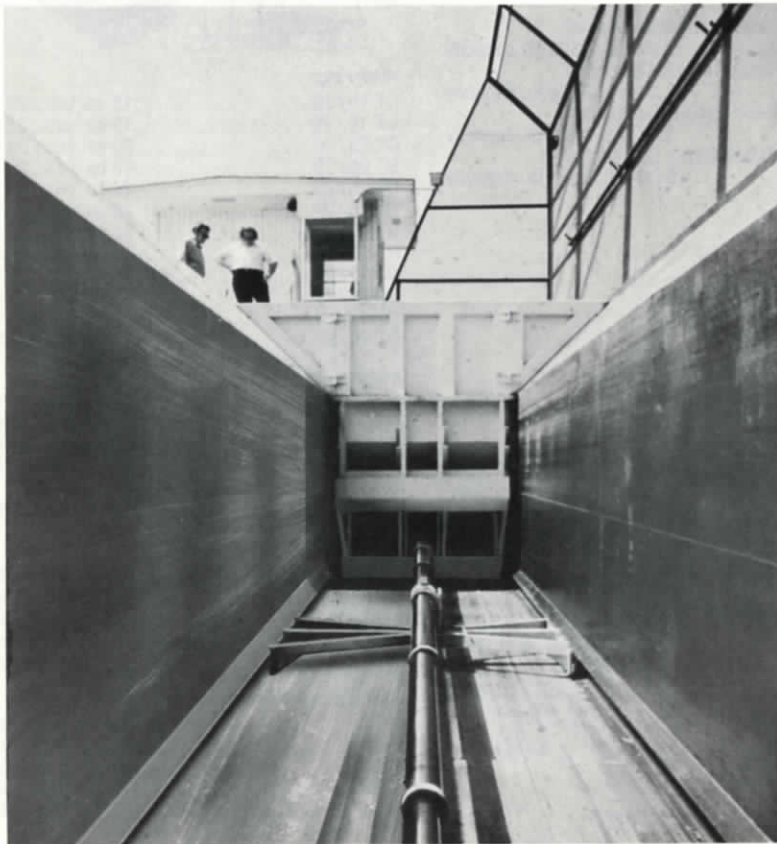
Here, all the E-Z Pack equipment can be on the job: push-pit, stationary compactors, mobile units, roll-off containers with tilt frame trucks or trailers—whatever is needed to get the work done. Our engineering staff will work closely with you in developing such an operation — to make certain it functions at optimum levels at all times.

The transfer station concept is particularly important today as people are carefully watching the costs of fuel and construction. A centrally located transfer station will help reduce operating costs and cut mobile equipment maintenance costs, too.

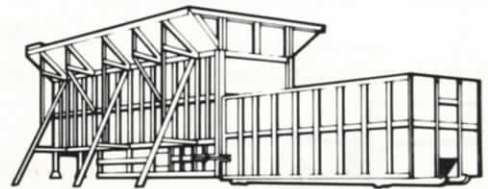
Modular Transfer Station

The Modular Transfer Station has found a new application in replacing municipal incinerators that have been closed. The transfer station can be erected in existing holding pits and incinerator conversion is complete.





Unitized Transfer Station



For the refuse handling operation that isn't as large, but still needs a transfer station, Peabody offers a Unitized Transfer Station. It is a combination of a 100 cu. yd. push-pit, 6.3 cu. yd. compactor, a roll-off container and tilt frame truck or a compactor trailer. It is easy to set up and can be installed quickly for special situations.



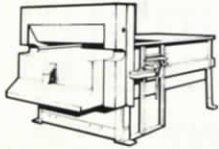
E-Z Pack[®] Components:

Baler



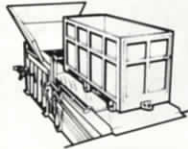
Model 60 Down-stroke Vertical Baler

Stationary Compactors



MODEL	TYPE
0.5 cubic yard	
Dry Pack™	Light Commercial (FPDP)
1.0 cubic yard	Light Commercial (FPLC)
2.3 cubic yard	
Dry Pack	Heavy Commercial (FPDP)
2.5 cubic yard	Light Commercial (FPLC)
3.0 cubic yard	Light Industrial (FPLI)
3.0 cubic yard	
Heavy Duty	Heavy Industrial (FPHI)
3.8 cubic yard	Light Industrial (FPLI)
3.8 cubic yard	
Heavy Duty	Heavy Industrial (FPHI)
3.8 cubic yard	
Pre-Crusher	Heavy Industrial (FPHI)
4.0 cubic yard	Light Industrial (FPLI)
5.0 cubic yard	Heavy Industrial (FPHI)
6.7 cubic yard	Heavy Industrial (FPHI)
11.0 cubic yard	Heavy Industry (FPTP) and Transfer Stations

Compactor Dumpers



3-D-3500 Dock Dumper Compactor	3 cu. yd., 3500 lb. capacity
5-D-3500 Dock Dumper Compactor	5 cu. yd., 3500 lb. capacity
3-S-4000 Side Dumper Compactor	3 cu. yd., 4000 lb. capacity
5-S-4000 Side Dumper Compactor	5 cu. yd., 4000 lb. capacity

Mobile Compactors



front loaders

HCFL60-25	6000 lb. lift, 25 cu. yds.
HCFL60-30	6000 lb. lift, 30 cu. yds.
HCFL60-35	6000 lb. lift, 35 cu. yds.
HCFL75-25	7500 lb. lift, 25 cu. yds.
HCFL75-30	7500 lb. lift, 30 cu. yds.
HCFL75-35	7500 lb. lift, 35 cu. yds.

rear loaders

M200	16, 17, 20 and 25 cu. yds.
C250	20 and 25 cu. yds.
HC300	25 cu. yds.

side loader

HCSL-1410	14 cu. yds.
-----------	-------------

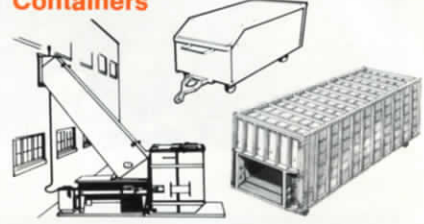
Tilt Frame Units



for use with roll-off containers

TF-30	30,000 lb. capacity
TF-50	50,000 lb. capacity
UTF-30	30,000 lb. capacity
UTF-50	50,000 lb. capacity

Containers



open top

OT 15/20	15 cu. yds., 20 ft.
OT 15/22	15 cu. yds., 22 ft.
OT 20/20	20 cu. yds., 20 ft.
OT 20/22	20 cu. yds., 22 ft.
OT 25/20	25 cu. yds., 20 ft.
OT 25/22	25 cu. yds., 22 ft.
OT 30/20	30 cu. yds., 20 ft.
OT 30/22	30 cu. yds., 22 ft.
OT 35/30	35 cu. yds., 20 ft.
OT 35/22	35 cu. yds., 22 ft.
OT 40/20	40 cu. yds., 20 ft.
OT 40/22	40 cu. yds., 22 ft.

closed, receiver

POC-33	33 cu. yds., 20 ft.
POC-37	37 cu. yds., 22 ft.
POC-38	38 cu. yds., 20 ft.
POC-42	42 cu. yds., 22 ft.

closed, receiver-ejector

POC-40E	40 cu. yds., 22 ft.
---------	---------------------

front loader-compactor

F2PC	2 cu. yds.
F3PC	3 cu. yds.
F4PC	4 cu. yds.
F6PC	6 cu. yds.
F8PC	8 cu. yds.

standard trash carts

K-32	2 cu. yds.
K-33	3 cu. yds.
K-52	2 cu. yds.
K-53	3 cu. yds.
K-54	4 cu. yds.

Transfer Stations



Modular Transfer Station	140 cu. yd. push-pit/11.0 cu. yd. Compactor
Unitized Transfer Station	100 cu. yd. push-pit/6.3 cu. yd. Compactor
Transfer Trailers, Long-Haul	65, 75 cu. yd. capacity

For fast, professional service and expert engineering guidance, call:

419-468-2120

Put our strength behind you. **Peabody** Solid Wastes Management

a division of Peabody Galion Corporation, Galion, Ohio 44833
The Proven Authority on Solid Wastes Handling Equipment and Systems