

THE TOUGH  
REAR LOADERS

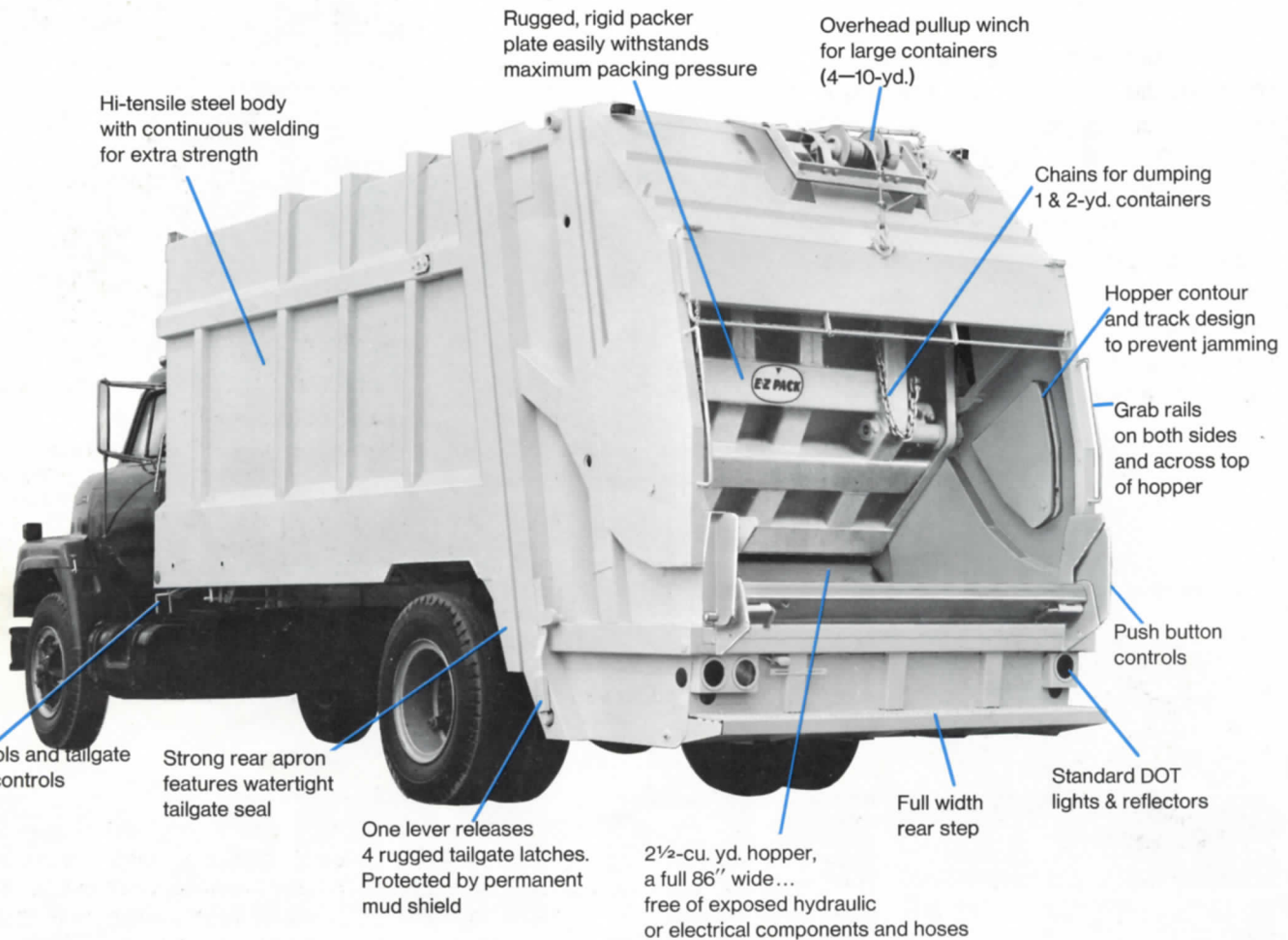


# PACKING POWER STAYING POWER

for the big job • Municipal, Institutional, Commercial pick-ups

# the big demand loader

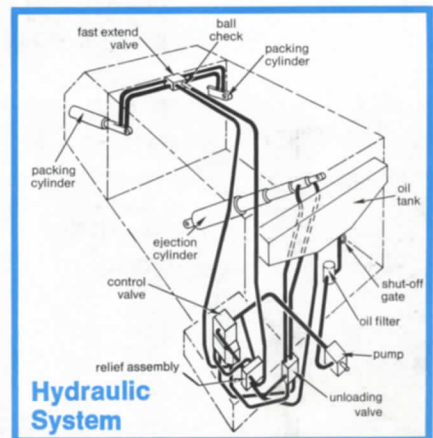
built to pack more, pack better, pack longer



**Design Simplicity.** The rugged E-Z Pack Auto-Manual design is a quick responding system—a simplified system that has low maintenance, servicing ease and longer life built in. Only 3 hydraulic cylinders, for instance, do the job other packers need 7 to do . . . actually do it better, in fact, while cutting the hydraulic cylinder requirement by more than half. Consider *that* service savings. And, the centralized linking of electrical control and hydraulic systems

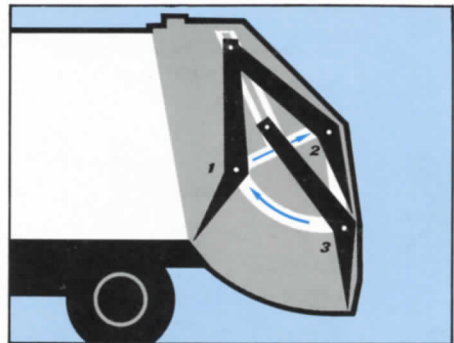
means the most dependable response possible.

**Service Simplicity.** Fewer parts . . . more efficient systems . . . more accessible design make the E-Z Pack Rear Loaders the easiest to service. Every part that must be lubed or tightened is easy to reach, quick to handle. You'll find lube points accessible from the outside for convenience—and safety. Of course, fewest possible trouble spots means minimum down-time.



# quick cycle, big compaction packing

Every 25 seconds (actual reload is 10 seconds) the E-Z Pack Rear Loaders can put away 2½ cubic yards of refuse—or about sixteen 30-gallon cans full. Add that to the crushing, upward-acting compaction force that squeezes excess cubage from every load, and you are profiting from more pick-ups per man-hour, more loads per day. With E-Z Pack's longer life and most dependable operation, you are making more on your investment, making it faster.



#### Automatic Packer Plate Cycle

- (1) Packer plate is at full-forward position.
- (2) When actuated, it rides along heavy duty tracks in the hopper, (3) passes hopper lip and sweeps refuse into the body. The plate stops at full-forward position, forcing load against the movable ejector plate. This means fullest compaction throughout the entire body.



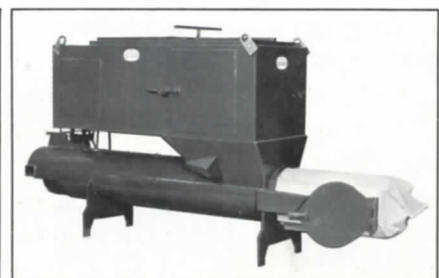
## built to be versatile

With their 86" full-width hopper; quick cycling time; "bonus capacity" packing; and low-maintenance dependability, the E-Z Pack Auto-Manual Rear Loaders are made for the Tough Job demands of the big municipal, institutional and commercial refuse handling jobs. Fit the capacity to the need with 16, 20 and 25 cubic yard models.

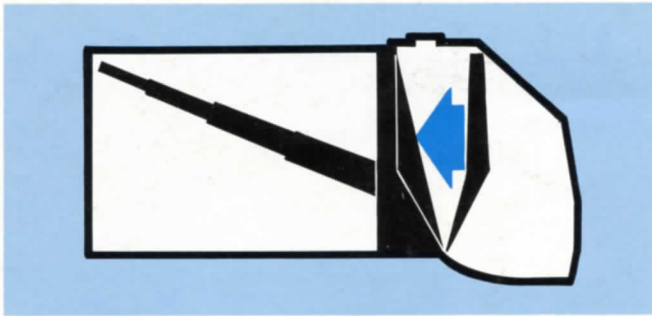
Use for optional container dumping, too. Quick-connect chains pick

up 1 and 2-yard containers for quick, easy unloading into hopper. A hefty overhead winch easily, safely raises large containers (4 to 10-yard) for complete gravity discharge of refuse loads. Choose either option or both for your E-Z Pack Rear Loader collection system.

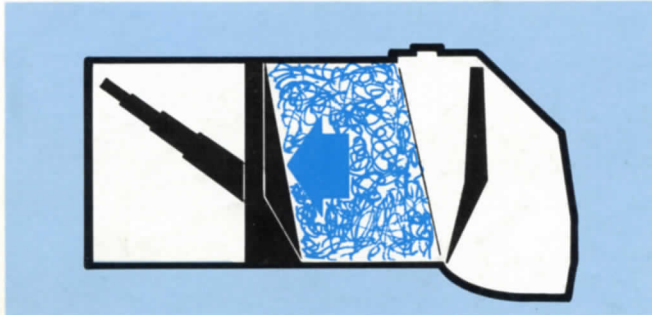
And E-Z Pack Rear Loaders can service E-Z Pack Apartment Packer RL containers, and the E-Z Pack Bag Packer.



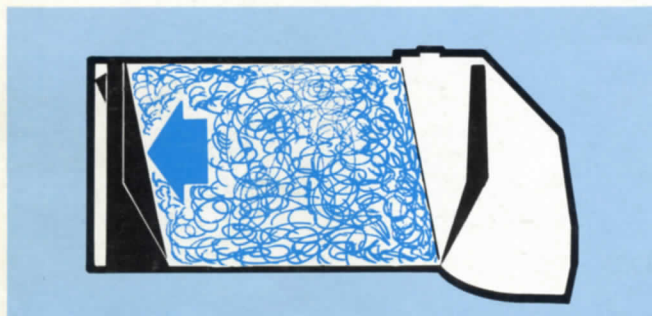
## SYNCHRONIZED PACKING CYCLE



Packer plate pushes refuse from hopper into body and stops at forward position, compacting load against ejector plate.

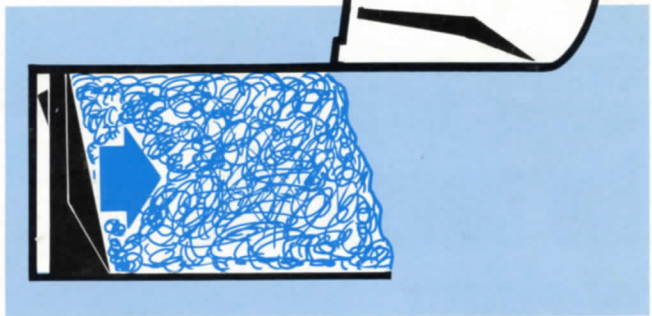


When hopper is reloaded, packer plate sweeps in the additional refuse, which packs upward against the ejector plate.

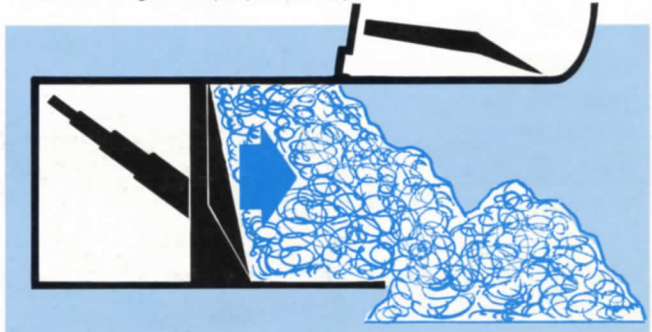


The ejector plate moves forward in synchronized movement with the packer plate action at a controlled rate. Pressure squeezes out excess cubage and makes room for bigger load . . . more pounds per cubic yard.

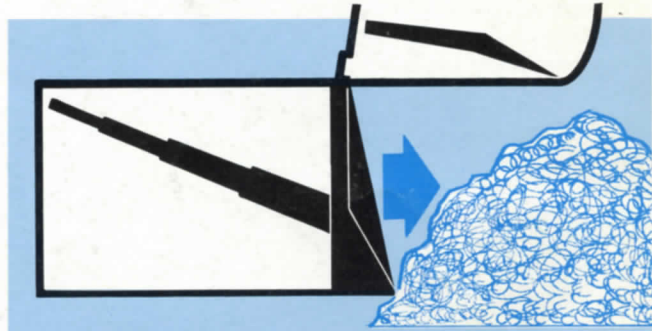
## CLEAN SWEEP EJECTION CYCLE



Single lever releases 4 tailgate latches. Packer plate cylinders raise the tailgate to prepare for ejection.



Ejector plate moves rearward to push compacted refuse load out of body.



Non-obstructing ejector plate is designed especially for smooth, clean unloading without tilting the body.

# FOR PACKING POWER STAYING POWER

choose the pick of the packers



auto-manual

## REAR LOADERS

E-Z PACK REAR LOADER BODIES AND REPAIR PARTS  
are available through a nationwide distributor network.  
AUTHORIZED DISTRIBUTOR

E-Z PACK COMPANY Division of Hercules Galion Products, Inc., Galion, Ohio 44833, U.S.A.