

# A STATIONARY REFUSE COMPACTOR

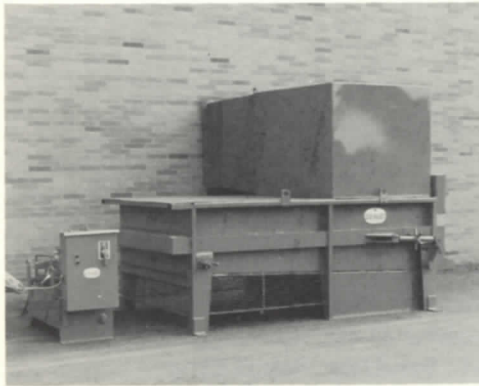
**E-Z PACK**

**DESIGNED FOR THE SANITARY HANDLING  
OF HIGH LIQUID CONTENT MATERIAL**

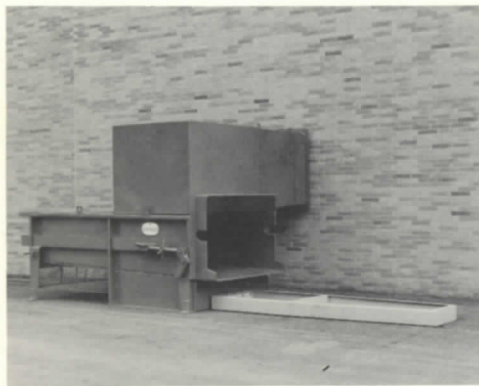
**"PICK OF THE  
PACKERS"**

**E-Z PACK "DRY PACK"**

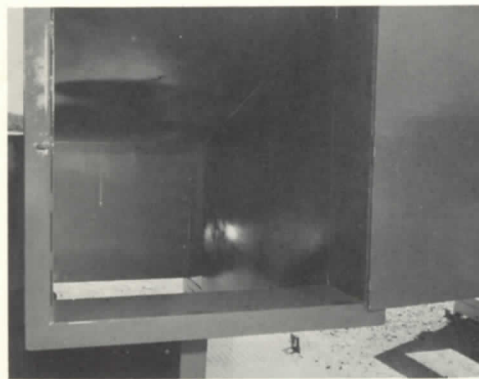
## Check These Design Features



**SAFETY — UNIT IS COMPLETELY ENCLOSED. RUGEDLY CONSTRUCTED AND EASILY INSTALLED.**

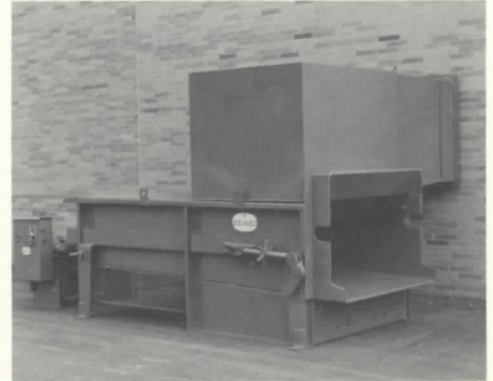


**CONTAINER GUIDE ASSURES PERFECT ALIGNMENT OF CONTAINER TO COMPACTOR.**

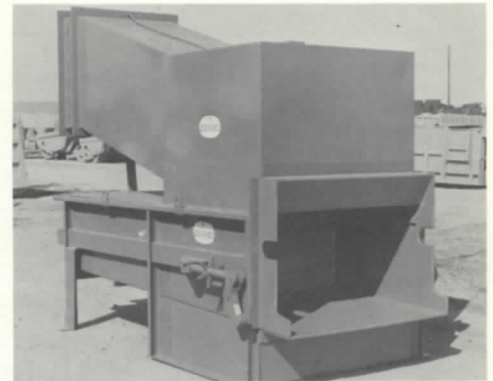


**SECURITY DOOR OPENS INTO CHUTE. SAFETY CUT-OFF CORD SHOWN IN HOPPER.**

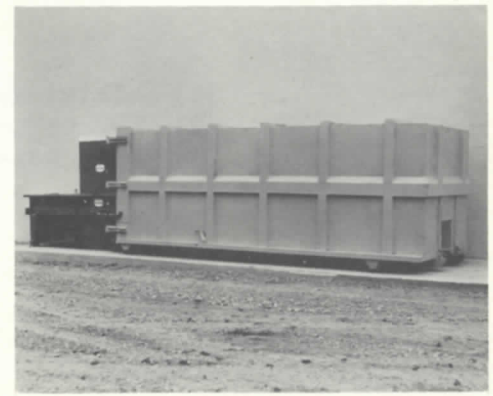
1. Drip pan lip extension into container.
2. Ram enclosed for safety.
3. Down slope for complete drainage.
4. Special chute with safety cut-off cord.
5. Special telescopic chute mounting to hopper.
6. Heavy-duty 10-inch breaker bar.
7. Heavy-duty turn-buckle for rapid container exchange.
8. Massive heavy-duty construction overall.
9. Hydraulic cylinder manufactured by E-Z Pack.
10. Easy installation features.
11. Deodorant spray device available.
12. Simple pin-off of load.
13. Expanded metal enclosure around lower portion of compactor.
14. Available with either side loading chute (standard) or rear loading chute (optional).



**THROUGH-THE-WALL MOUNTING PERMITS INSIDE LOADING. POWER UNIT PLACEMENT CAN BE INSIDE OR OUTSIDE.**



**SLOPED CHARGE BOX WITH LIP EXTENSION INSURES FLOW OF LIQUIDS INTO CONTAINER. REAR LOADING CHUTE IS OPTIONAL.**



**LARGE CAPACITY RECEIVING CONTAINERS — UP TO 42 CUBIC YARDS — CAN BE USED WITH DRY PACK.**

**E-Z PACK COMPANY**

a division of

**HERCULES GALION PRODUCTS, INC.**

**GALION, OHIO 44833, U.S.A.**

## SPECIFICATIONS

### FEATURES:

- (1) Two (2) Cubic Yard Capacity
- (2) Top Opening Dimension 60-5/8" X 40"
- (3) Ram Stroke 60"
- (4) Penetration Into Container 12"
- (5) Extra Heavy Duty Construction. All Steel.
- (6) Packer to Container Locks, 1-1/4" - 12 Thread Hand Wheel Turnbuckle with Extra Heavy Duty Lock Hooks.
- (7) All Structural Members Designed to Resist Bending Resulting from Max. Forces of the Hydraulic System plus Large Safety Factor.

### ELECTRICAL & HYDRAULIC

- (1) Motor 7-1/2 HP, 1750 RPM, 208-416/230-460 3 Phase, 60 Cycle
- (2) 110V Control Circuit
- (3) Automatic Cycling - Multi-Cycle Counter 1 to 10 Cycles
- (4) Manual Cycle - Jog
- (5) Pump Capacity - 8 G.P.M.
- (6) Cycle Time - 45 seconds.
- (7) Area of Ram Face: 19" X 60"
- (8) Compaction Force - 40,000 Lbs. Total
- (9) Compaction Force per Square Inch - 35 Lbs.
- (10) Cylinder - 5" with 4" Shaft - 60" Stroke
- (11) Operating Pressure 2000 PSI

### WEIGHTS & OIL CAPACITY

- (1) Total Weight 6500 Lbs.
- (2) Power Unit - Approximately 700 Lbs. Including Oil.
- (3) Oil Reservoir Capacity - 20 Gallons