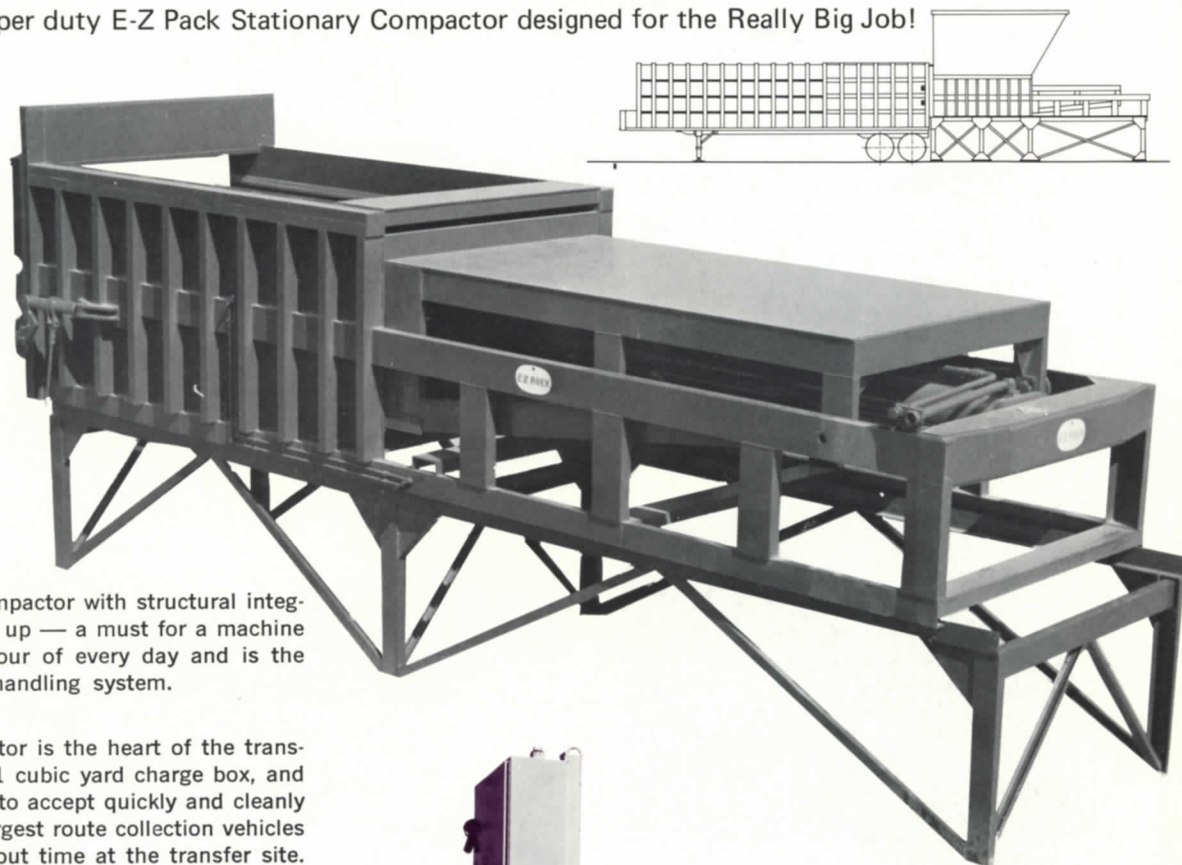


# Transfer Compactor

The super duty E-Z Pack Stationary Compactor designed for the Really Big Job!



**E-Z PACK** — A Transfer Compactor with structural integrity built in from the ground up — a must for a machine that must function every hour of every day and is the keystone of a solid waste handling system.

#### AS THE KEYSTONE:

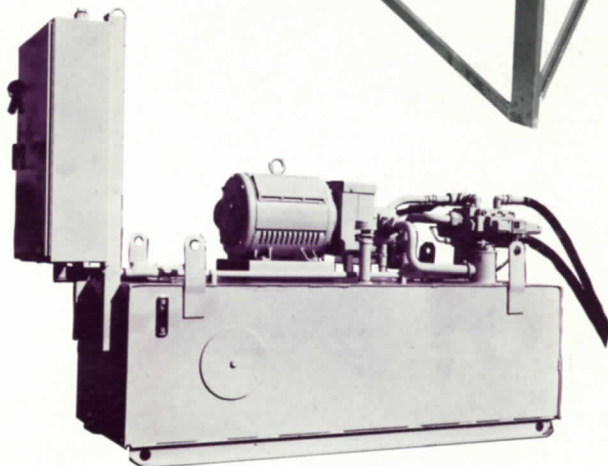
E-Z Pack's Transfer Compactor is the heart of the transfer operation. Its massive 11 cubic yard charge box, and hi-speed operation combine to accept quickly and cleanly the entire contents of the largest route collection vehicles — minimum vehicle in and out time at the transfer site.

**NOW—WITH A CENTRALLY LOCATED TRANSFER STATION** — Routes can be laid out for Maximum Operating Route Efficiency. Collection vehicles stay on routes — reduces vehicle size and/or quantity required. Manpower costs are reduced (collection laborers do not spend hours riding to disposal sites). The disposal site trips are handled by the E-Z Pack Long Hauler Transfer Trailer.

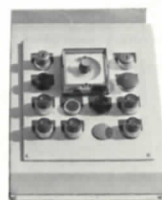
Simplified Remote Controls contained in standard NEMA 12 Enclosures can be located to optimum advantage permitting one-man operation of the entire system. Safety is insured when the control panel can be located where operator has an unobstructed view of the entire system during operation.

#### POWER SOURCE:

The self contained power pack may be located under the Transfer Compactor or any remote location. The hydraulic system is energized by a 60 H.P., epoxy encapsulated wound, electric motor. The regenerative hydraulic system through E-Z Pack's exclusive valving provides 149 GPM oil flow. The entire hydraulic system is protected by E-Z Pack "Micron Screen" Filters. The 360 gallon reservoir/pump/motor/valves/panel are skid mounted for ease of handling.



ELECTRIC POWER PACK



REMOTE STATION

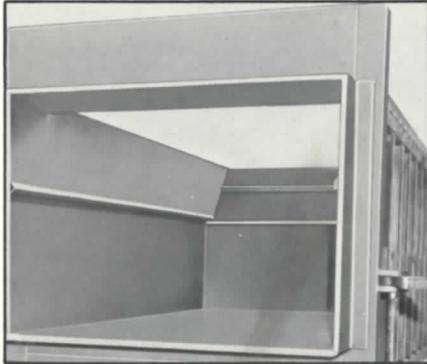
SPECIFICATIONS OTHER SIDE



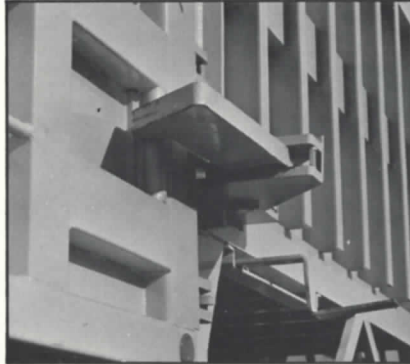
**E-Z PACK COMPANY**  
A Peabody Galion Company  
Galion, Ohio 44833

*THE AUTHORITY ON REFUSE REMOVAL  
EQUIPMENT AND SYSTEMS*

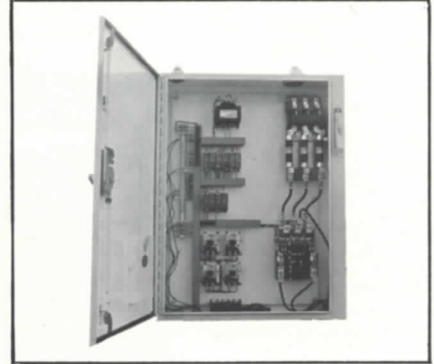
# E-Z PACK'S TRANSFER COMPACTOR ... Tremendous Compaction Reduces Costs!



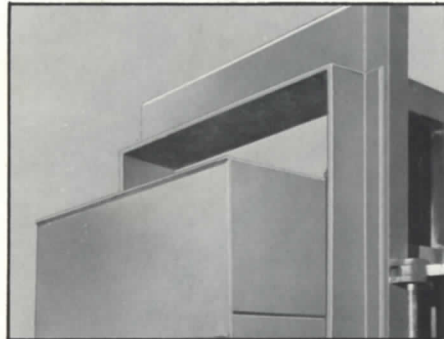
Front Charge Box Opening—Breaker Bar features massive construction to withstand maximum forces of hydraulic system.



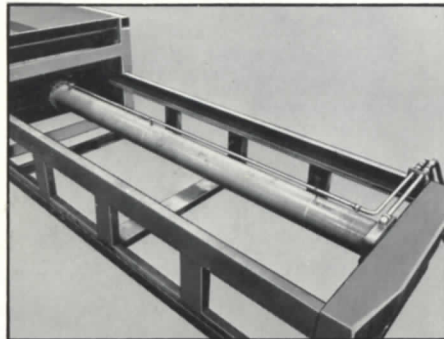
Lock-hooks engage the trailer as it is backed into loading position, to assure secure mating of trailer and compactor.



Simplified control panel with numbered circuits for ease of maintenance fully conforms to all JIC standards. Panel has multiple built-in safety and offers automatic or manual control from remote or local station.



Compactor Ram—has a deep penetration into Trailer Body and provides dense compaction of load.



Massive 10" Diameter Double Acting Ram Cylinder and Heavy Duty construction of Transfer Compactor join together to insure continuous performance.

## SPECIFICATIONS

### Overall Dimensions:

Length—27' 10"

Width—9' 7"

Loading Height w/stand—10' 11" (min.)

### Charging Box Opening:

Width—80½" (clear top opening)

Depth—55"

Length—114⅝" (clear top opening)

Cycle Time — 45 seconds

### Cylinder:

Size—10"

Stroke—153"

### Power Pack and Electric Control Circuit:

60 HP, 1750 RPM, 460 V, 3 Phase, 60 Cycle

### Weight:

Compactor—27,500 lbs.

Power Unit—5,600 lbs.

Standard Stand—2,350 lbs.

Reservoir Capacity — 360 gallons

E-Z PACK COMPANY A Peabody Galion Company, Galion, Ohio 44833

**E-Z PACK**