

FAUN

Sita

HEAVY DUTY GARBAGE COMPACTION SUPERSTRUCTURE

MODEL 1200 P · MODEL 1600 P · MODEL 2000 P

12 cbm

15 cbm

19 cbm



non polluting
economical
reliable

FAUN Sita Heavy Duty Garbage Compaction Trucks



Garbage Compaction Superstructure

equipped with continuously by moving hydraulic compaction unit as well as pressure-ejector plate. The superstructures are suitable for all commercial truck chassis for municipalities.

The superstructures correspond in every respect to the German standards DIN 30 701, DIN 30 703 and DIN 30 710.

The following sizes can be delivered:

| | useful container volume | loading capacity depending on the nature of garbage |
|--------------|-------------------------------|---|
| Model 1200 P | 12 cbm | 40-60 cbm |
| Model 1600 P | 15 cbm | 50-70 cbm |
| Model 2000 P | 19 cbm | 70-90 cbm |

The superstructures are suitable for the processing of garbage sacks or can be equipped with ZÖLLER lifting and tipping devices for all commercial dustbins or containers. The lifting and tipping devices for bins are mounted on an exchangeable door.

Technical Specification



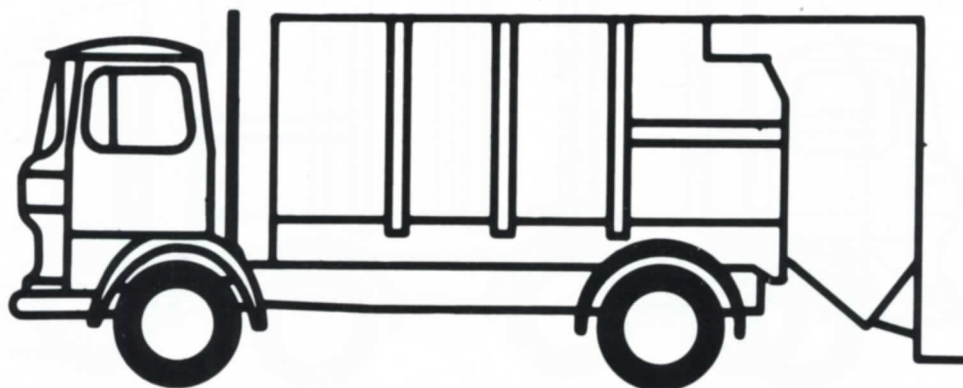
Sita

1200 P

| | | |
|--|-----|------------|
| Superstructure | | |
| volume | cbm | 12 |
| weight* | kg | 4550 |
| length | mm | 4860 |
| height | mm | 2085 |
| width | mm | 2420 |
| Compaction unit | | |
| hydraulic nominal pressure | bar | ● 210 |
| max. operating pressure | bar | 105 |
| max. pressing capacity | kp | 8300 |
| compaction up to | | 1:5 |
| Truck chassis | | |
| optional admissible weight | t | ● 14—16 |
| wheelbase with normal cab | mm | 3500—3900 |
| with Pullman cab | mm | 4000—4400 |
| Over-all dimensions | | |
| height, empty ** | mm | 3000—3050 |
| rear part lifted, empty (discharge position) | mm | 4550—4650 |
| overhang | mm | 1950—2030 |

* including auxiliary frame, without exchangeable door and lifting and tipping device

** depending on the truck chassis

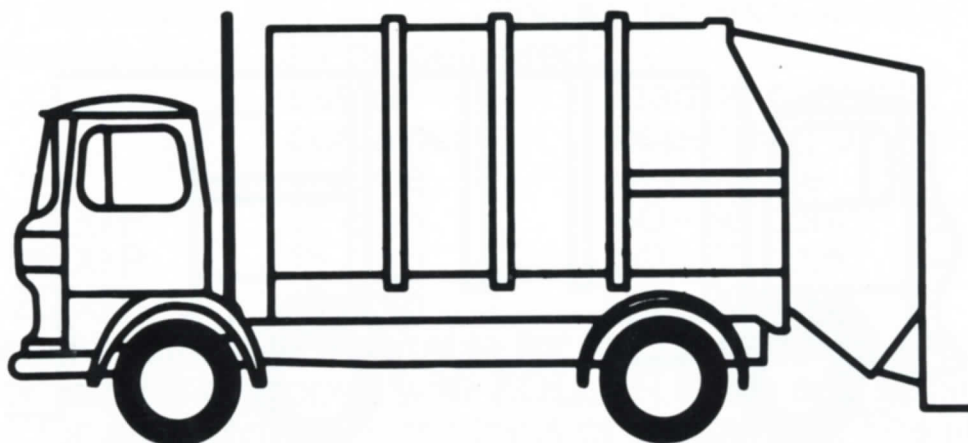




| | | |
|---|-----|-----------|
| Superstructure | | |
| volume | cbm | 15 |
| weight* | kg | 4700 |
| length | mm | 4860 |
| height | mm | 2370 |
| width | mm | 2420 |
| Compaction unit | | |
| hydraulic | | ● |
| nominal pressure | bar | 210 |
| max. operating pressure | bar | 105 |
| max. pressing capacity | kp | 8300 |
| compaction up to | | 1:5 |
| Truck chassis | | |
| optional | | ● |
| admissible weight | t | 15—18 |
| wheelbase | | |
| with normal cab | mm | 3500—3900 |
| with Pullman cab | mm | 4000—4400 |
| Over-all dimensions | | |
| height, empty** | mm | 3300—3400 |
| rear part lifted, empty (discharge position) | mm | 4570—4670 |
| overhang | mm | 1950—2030 |

* including auxiliary frame,
without exchangeable door and
lifting and tipping device

** depending on the truck chassis

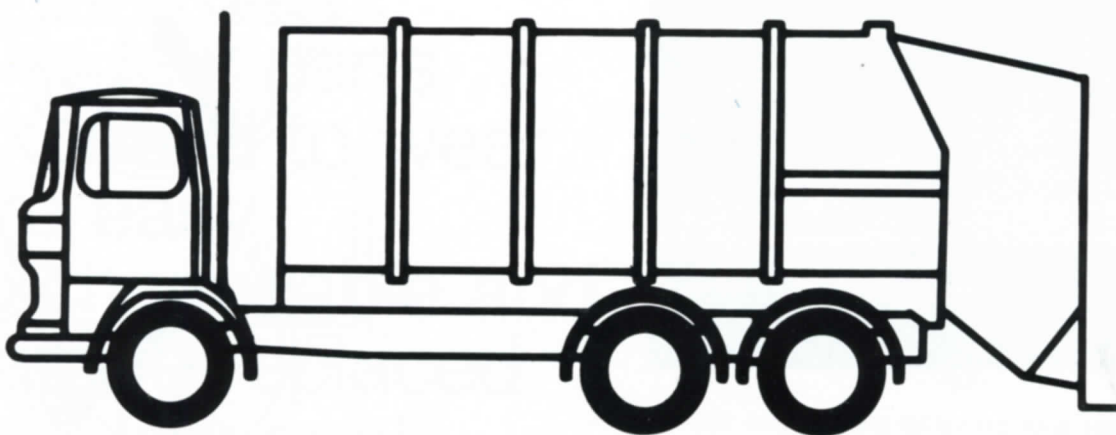




| | | |
|--|-----|--------------|
| Superstructure | | |
| volume | cbm | 19 |
| weight* | kg | 5100 |
| length | mm | 4960 |
| height | mm | 2370 |
| width | mm | 2420 |
| Compaction unit | | |
| hydraulic nominal pressure | bar | ● 210 |
| max. operating pressure | bar | 105 |
| max. pressing capacity | kp | 8300 |
| compaction up to | | 1:5 |
| Truck chassis | | |
| optional admissible weight | t | ● 22—26 |
| wheelbase with normal cab | mm | |
| with Pullman cab | mm | upon request |
| Over-all dimensions | | |
| height, empty** | mm | 3350—3480 |
| rear part lifted, empty (discharge position) | mm | 4620—4750 |
| overhang | mm | 1950—2030 |

* including auxiliary frame, without exchangeable door and lifting and tipping device

** depending on the truck chassis

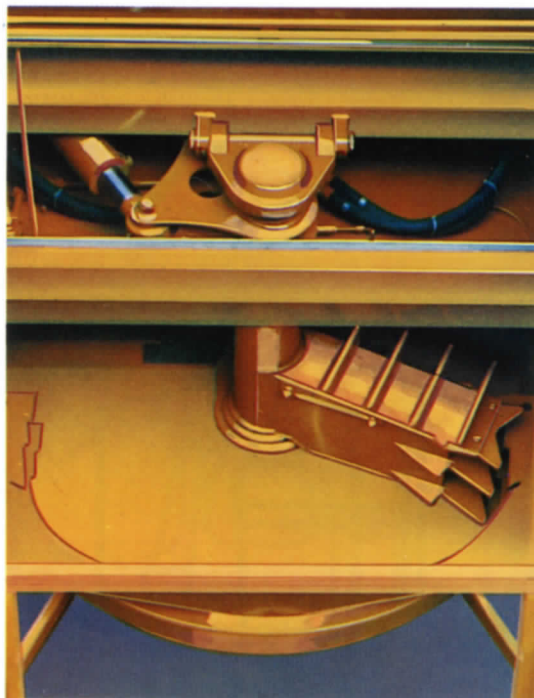


**FAUN
Sita**

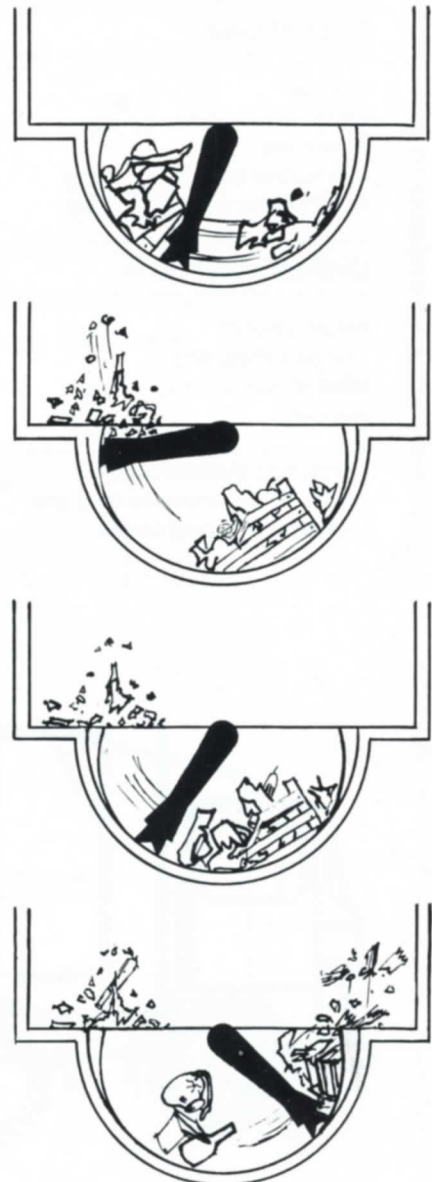
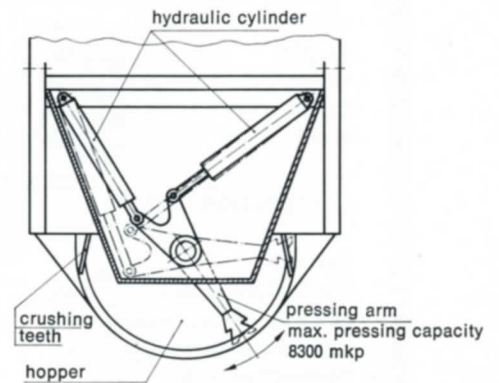
high garbage compaction

by crushing the garbage
in the hopper before
pressing and compaction
by means of the
pressure-ejector plate.

The high compaction will be achieved by the heavy duty pressing arm installed in the hopper which continuously crushes and presses the garbage against the pressure-ejector plate. The garbage will be automatically crushed by the crushing teeth mounted on the pressing arm and in the hopper. Garbage sacks for instance will be nearly completely torn. Depending on the nature and the quantity of the garbage the movements of the pressing arm are adjustable.



Hopper with pressing arm. Above the hydraulic installation with a cover against dust and dirt.



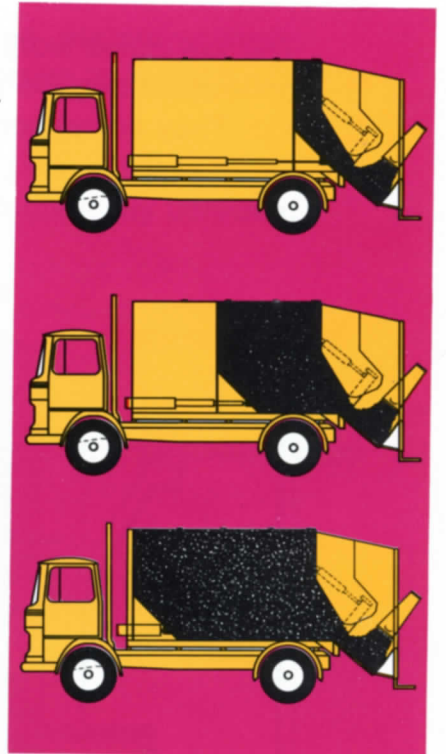
FAUN
Sita

utmost
reliable
in operation

by simple design
of the
patented compaction
unit.

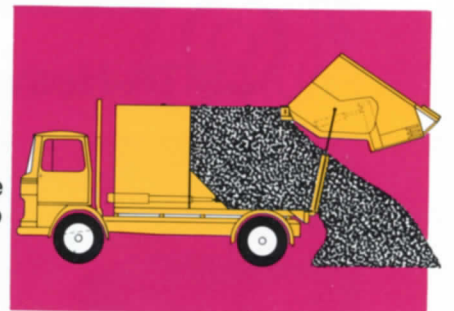
The hydraulic compaction unit is operated with low pressure of 105 bar only. It works simple with very few moving parts and is thus very reliable in operation. The few parts exposed to wear are easy exchangeable and can be replaced with low costs.

During charging the pressure-ejector plate will be pushed forward until the whole volume of the container is filled with compacted garbage.



CHARGING

During discharging the pressure-ejector plate pushes the garbage to the rear and the outside.



DISCHARGING

**FAUN
Sita**

smooth operation

by hydraulic drive
of the
compaction unit.

The low-noise working allows to operate the FAUN-Sita garbage truck in residential centres and recreation areas and in the early morning hours, too. They correspond to modern noise suppression.



mounted on MERCEDES truck chassis

FAUN-SITA-HeavyDutyGarbage Compaction Superstructure



mounted on Magirus-Deutz truck chassis



mounted on MAN truck chassis

simple handling

by easy to be reached control elements and automatic locking and unlocking of the rear part for discharge operation.

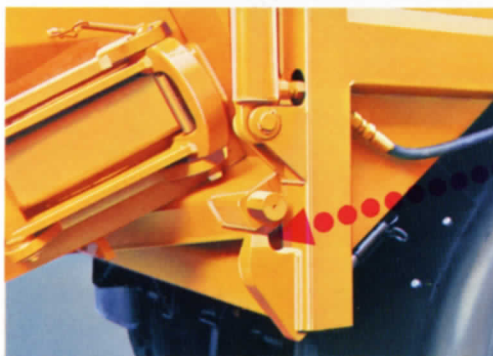
The hydraulic unit will be quickly switched in by an electromagnetic clutch and a toggle switch installed on the gearshift lever in the driver's cab.

The operating panel for the control of the rear part and discharge is installed on the left side of the vehicle. The rear part is automatically unlocked when lifting and locked when lowering.



1

rear part
locked



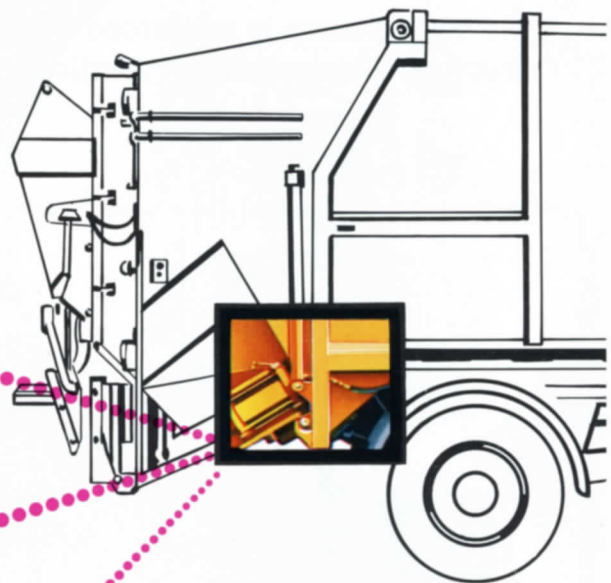
2

rear part
unlocked



3

rear part
lifting



rear part
lifted for
discharge

FAUN
Sita

rigid construction

made of wear and
weather resistant steel

FAUN-products are recommended by their rigid construction which also resist to high stress.

The superstructures are made of weather resistant steel and additionally the wearing parts are made of high wear resistant steel.

The truck chassis is reinforced by an auxiliary frame on which the superstructure is mounted with elastically connected front part.



**FAUN
Sita**

easy mounting

of the ZÖLLER lifting and tipping devices by means of exchangeable doors with snap closures.

FAUN-Sita garbage superstructures can be equipped with all kinds of lifting and tipping devices and can be mounted on all commercial truck chassis for municipalities according to the customer's request. They correspond to the German standards DIN 30701, DIN 30703 and DIN 30710.

The rear doors are easy exchangeable and interchangeable.

twin lifting and tipping device
suitable for 35/50 ltr. DIN bins



lifting and tipping device suitable
for 110 ltr. barrels



lifting and tipping device suitable
for 220/120 ltr. barrels



lifting and tipping device both for
1.1 cbm containers and 220/120 ltr. barrels

FAUN

Sita

Heavy Duty Garbage Compaction Body

The convincing technical conception with the patented compaction system gives maximum efficiency with a minimum of technical effort.

The outstanding features of this construction add-up to a reliable vehicle with high economy which helps to keep costs for the Municipal Cleansing Departments down.



FAUN-WERKE

Factory Osterholz
D-286 Osterholz-Scharmbeck · Bremer Straße 28—30
Telefon 0 47 91 / 5 55 · Telex 24 723 · West Germany

