

FL3000

FRONT LOADER

DESIGNED TO DOUBLE PRODUCTIVITY

by **GarWood**[®]
DIVISION OF **SARGENT**
INDUSTRIES





Productivity Improvements for Increased Profits

Performance, design and engineering superiority are the combination that make the FL-3000 the most advanced Front Loader in the industry. From its unique packing principle to its matched body construction, the FL-3000 means profit for its owner . . . in greater compaction, faster operation, greater route productivity and reduced operating costs.

**WHY BUY TWO
WHEN ONE WILL DO**

BIGGER PAYLOADS

Designed To Double Route Productivity

The FL-3000 achieves greater density compaction than any other Front Loader in the Industry with an advanced packing principle which places concentrated packing forces deep into the compacted load. This compaction technique enables the FL-3000 to outperform anything on the market today. The following page explains this remarkable packing principle.

FASTER OPERATION

Save Time And Valuable Manpower Hours

The FL-3000 has the fastest cycle time of any front loader in the industry. Coupled with the Gar Wood Silencer System it provides "live" power at all times allowing the operator to cut hours off his regular route time. The FL-3000 also has many other features that save time on the route and at the dump . . . self-leveling forks, automatic top door, spill shields and hydraulically operated tailgate lock and unlock.

GREATER RELIABILITY

Less Downtime—Higher Productivity

The FL-3000 has undergone the most exhaustive testing program ever introduced to this industry. Utilizing a special testing facility, the FL-3000 has worked around the clock to provide an accelerated 5-year wear test exceeding the toughest conditions it would ever encounter on the most demanding routes. It comes standard with 8000-lb. lift arms or an optional 10,000 lb. to handle your biggest loads. The floor is manufactured from 1/4" Sargeoy, 165,000 p.s.i. yield steel and has greaseless bearings throughout for longer life and less maintenance.

GREATER ECONOMY

Assures You Of Lower Total Ownership Costs

All of the above productivity improvements are designed for one purpose . . . to make your refuse collecting operation more profitable. If you look closely at your present equipment, you will find that in many cases a single FL-3000 can do the job of two competitive units. On actual route demonstrations all over the United States and Canada, the FL-3000 more than doubled the productivity of other Front Loaders.

Revolutionary Packing Principle

The FL-3000 achieves its greater density compaction by utilizing a revolutionary patented packing principle which places concentrated packing forces deep into the compacted load. In all other Front Loaders, when the ram panel reaches peak compaction pressures against the load, the panel stops and so does any further compaction. However, in the FL-3000 when the main panel reaches its maximum compaction, two augmenting panels, set into the face of the main panel and powered by two hydraulic cylinders, push into the compacted refuse like two giant fists forcing out any voids left by the larger surface of the main panel. As these voids are punched into the refuse, the pressure of the main panel forces ahead to fill any additional air space. This relentless effort between the two augmenting panels and the main panel continues until a near solid state is achieved in the compacted refuse.

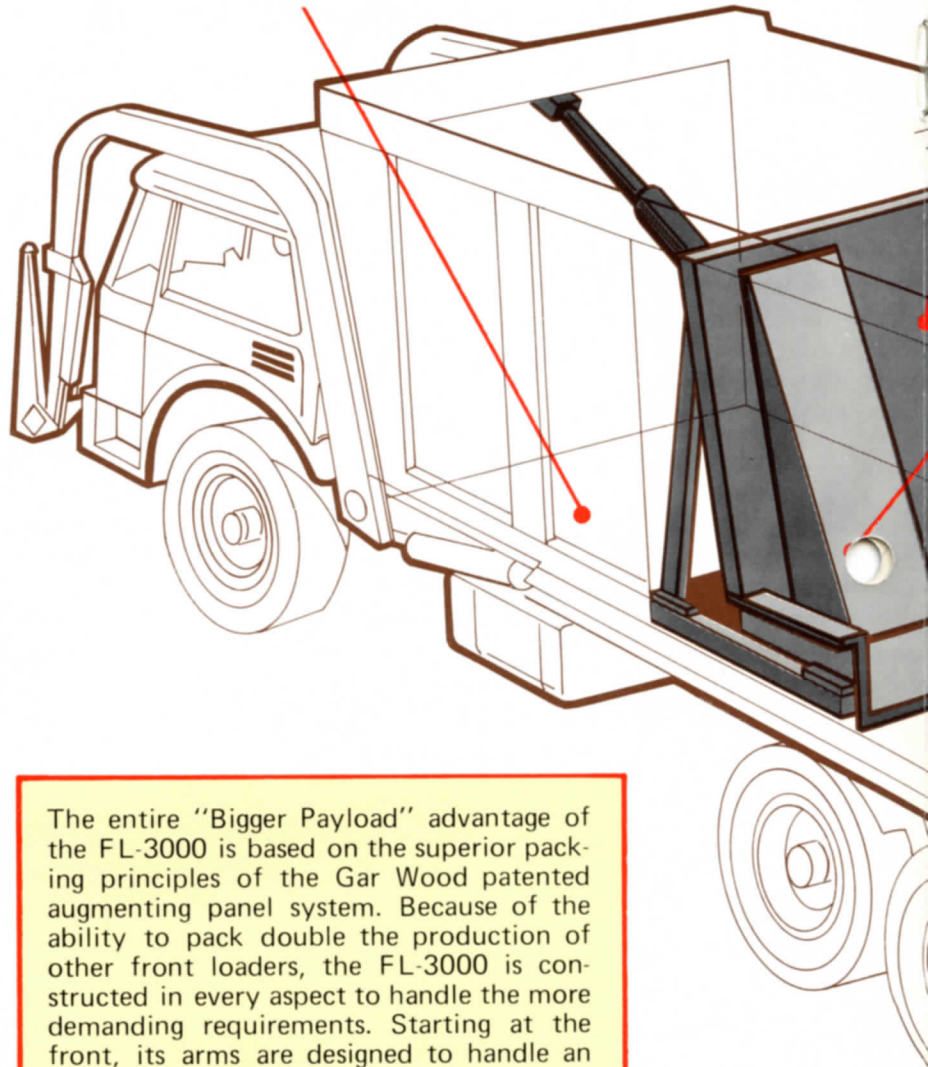
The theory behind the greater compaction principle of the FL-3000 comes from the principle used for years in the sheeps foot rollers used to compact refuse at the dump site. Greater densities are achieved when a small concentrated pressure is applied to a given area. It provides the greatest concentrated compactive effort obtainable. The action of the augmenting panels in combination with the main ram panel gives you this same concentrated compactive effort.

Dyna-Action Tailgate

The precision curvature of the FL-3000 tailgate design provides the same effective refuse against refuse action that helps produce more complete compaction in the LP-900 rear loading packer. We term this Dyna-Action; the rolling, churning interaction of the refuse as it is forced upward along the geometrically designed curvature of the FL-3000 tailgate. The refuse is pulverized against itself as the ram panel and augmenting panels compact the abrasive refuse into the tailgate area.

BIGGER PA

**1/4" SARGELOY 165,000
P.S.I. YIELD STEEL FLOOR**

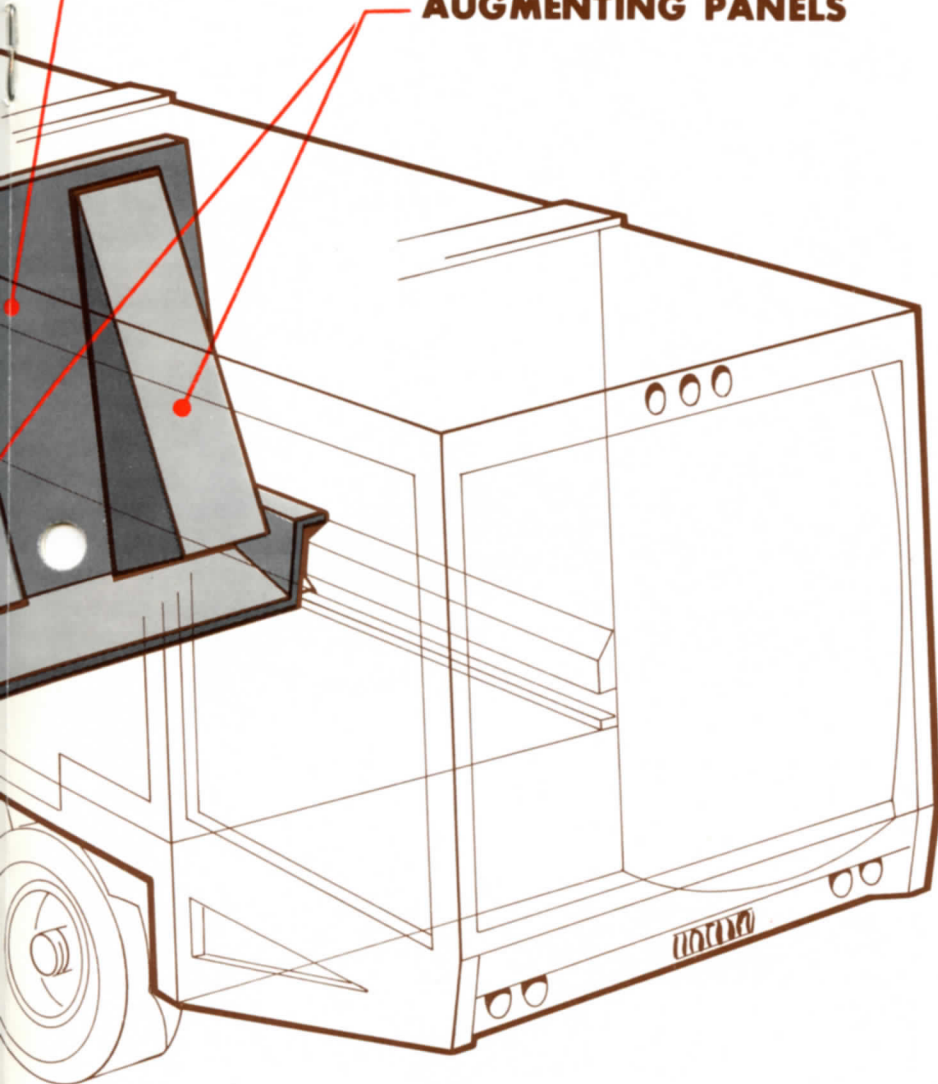


The entire "Bigger Payload" advantage of the FL-3000 is based on the superior packing principles of the Gar Wood patented augmenting panel system. Because of the ability to pack double the production of other front loaders, the FL-3000 is constructed in every aspect to handle the more demanding requirements. Starting at the front, its arms are designed to handle an 8,000 lb. load. When you plan for this kind of load to be dumped an average of eight feet to the floor of the body, you provide a floor that can handle that kind of punishment. The FL-3000 has a 1/4" Sargeloy 165,000 p.s.i. yield steel armor plate floor. You then provide the unit with a proven hydraulic system to move and compact that kind of load. Along with a body stress analysed to withstand the higher loading. From every conceivable aspect the FL-3000 is designed to make your refuse hauling operation more profitable while providing you with the toughest best looking front loader on the market.

PAYLOADS

MAIN PANEL

AUGMENTING PANELS



On actual routes in demonstrations held over the United States and Canada the FL-3000 has amazed owners and operators alike with its ability to outpace anything in the Front Loader market. Those who have seen it in action know that this is the machine the Front Loader market has been waiting for. Contact your local Gar Wood Distributor for a look at the new FL-3000 and be convinced.

How The FL-3000 Increases Your Route Productivity

A mechanical interlock system is built into the FL-3000 to prevent the possibility of a loaded container being dumped ahead of the ram panel. This interlock system designed into the arm raising mechanism prevents the arms from being raised until the ram panel is fully forward in the body.

Once a loaded container is dumped, the operator moves the ram panel to pack the load against the automatically locked tailgate. When the main telescoping cylinder reaches its peak operating pressure, the ram panel is exerting its maximum force against the load. At that point, the ram panel is locked in position, a sequencing valve then diverts hydraulic oil through a reciprocating valve to the two cylinders which operate the augmenting panels built into the main ram panel.

These powerful augmenting panels move forward and upward, applying great concentrated force into the refuse that has already been compacted behind the ram panel. When the augmenting panels reach their maximum stroke and start to withdraw, the hydraulic sequencing procedure is repeated and the entire ram panel moves forward again. This results in an entirely different degree of compaction. The refuse is exposed to far greater concentrated crushing, combined with an upward, rolling, mulching action.

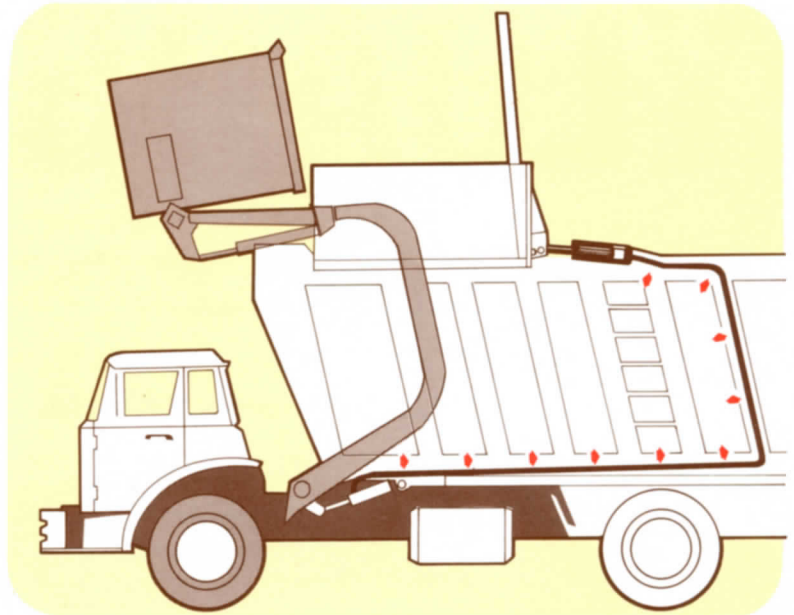
Faster Operation Saves Time and Dollars

The Gar Wood FL-3000 Front Loader is the fastest in the industry. It will lift a loaded container to full dump position in (11) seconds at 1500 R.P.M. This faster operation allows the operator to save many hours on his route and still handle more containers than he is handling with his present equipment. For example: if you could save an average of 2 hours per day, it would total (10) hours per week or projected to a year total 500 hours. If you converted that to dollars using \$8.00 per hour as your base, you would be saving \$4000.00 per year. That's not all, you would still have to add the additional saving in fuel and maintenance.

FASTER OPERATION

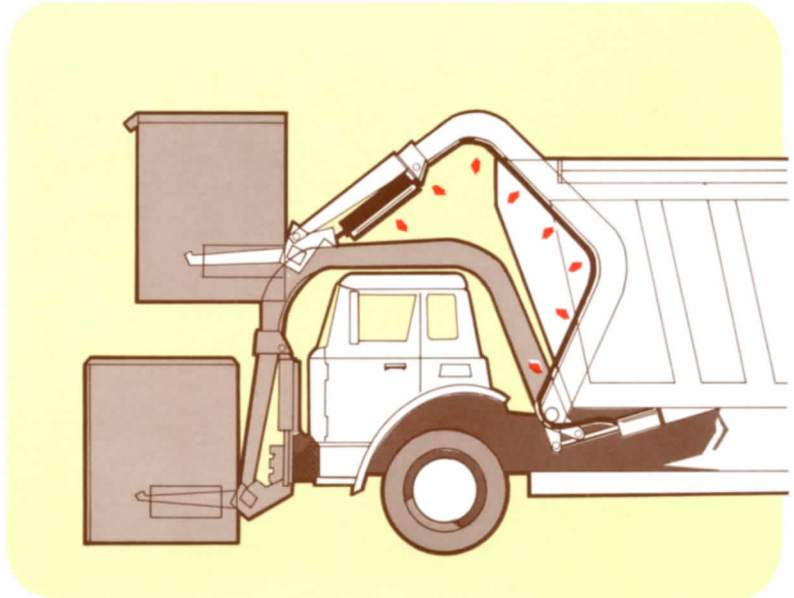
Automatic Top Door System

The top loading door on the FL-3000 is designed to perform several operations during loading. The main door, which opens from front to rear, is powered by a hydraulic cylinder. Beside providing a cover for the refuse, when closed, it also exerts packing pressure on the dumped refuse forcing it down into the body where the main ram panel thoroughly compacts it. As the top loading door opens, two litter guards also raise to keep the refuse being dumped contained within the body opening.



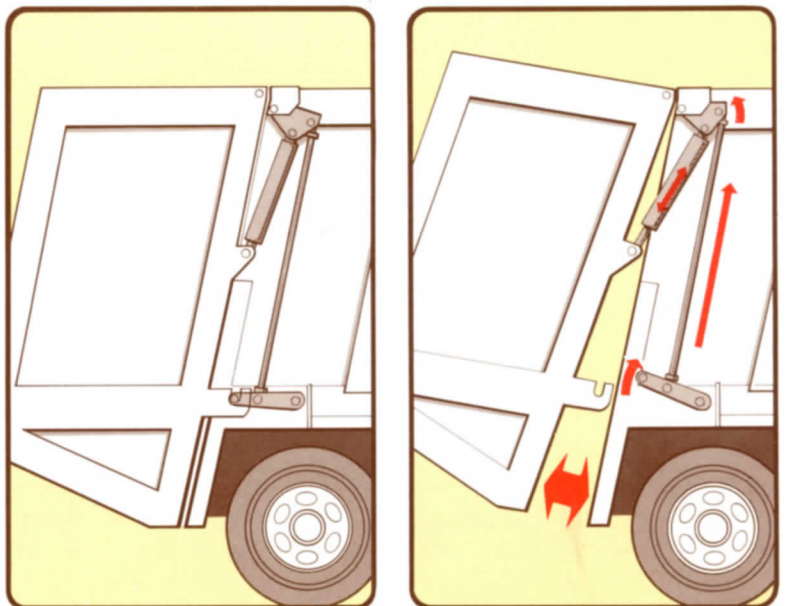
Self-Leveling Forks

The FL-3000 is an Operator Designed Unit with many automatic functions designed to save time and effort on the route or at the dump. Self-leveling forks allow him to handle a variety of container sizes and still concentrate on fast, efficient service to his customers. The FL-3000 offers a powerful 8000-lb. lift arm capability as standard equipment and a 10,000-lb. option. The use of high-strength steel allows for better operator visibility. These arms have been stressed and static tested to 20,000 lbs.



Automatic Tailgate Latching System

The automatic tailgate latch and unlatch systems on the FL-3000 allow the operators to remain in the cab during all dumping operations. They stay warm and dry while competitive operators wade through mud, water and refuse to unload their units.





GREATER RELIABILITY

Production Tested For Longer Life

The FL-3000 is built to stand up to the toughest refuse handling job day in and day out. It is equipped throughout with life time self-lubricating bearings. A quarter inch Sargeloy floor under the hopper area provides armor plate strength of 165,000 p.s.i. yield steel to handle the 8,000 to 10,000 lb. loads dumped into the body. The FL-3000 is built from the ground up to stay on the job, giving you a more profitable refuse hauling operation.

The FL-3000 has undergone the most extensive test program in this industry. A specially designed collection station was created to give it the roughest punishment a front-loader could encounter. This test operation goes on 22 hours a day, 6 days a week. An average of 30 times a day with 60% of the load at the 10,000 lb. level. This accelerated test of five years operation guarantees you a machine that will stand up to the job with less downtime and greater route productivity.

The FL-3000 is equipped to handle from 2 to 8 yard containers, with a variety of options to satisfy the most discriminating owner. Contact your local Gar Wood Distributor for a list of available options.

Refuse Equipment Designed To Produce Profit



LP-700-9
High Speed Residential Packers



LP-900 Series
High Density Bulk Packers

WORLDWIDE SALES AND SERVICE

The Gar Wood distributor organization covers the world . . . each distributor receives complete sales and service training from factory specialists . . . each has replacement parts in stock and service personnel ready to assist you. Complete attention is yours when you deal with your local Gar Wood Distributor. He is an independent businessman in your area who you can depend upon. See him for the finest in refuse handling equipment.

TRUCK EQUIPMENT

BOSTON INC.

300 NORTH BEACON STREET

BRIGHTON, MASS. 02135

improving the environment through modern technology

GarWood®

DIVISION OF **SARGENT** ENTERPRISE, ALA.
INDUSTRIES