



FOR CLEAN, HEALTHFUL CITIES

Specify

GAR WOOD

**STREET FLUSHERS
AND PRESSURE SPRINKLERS**

STREAMLINED AND DE LUXE SERIES

Street Flushers

CLEAN BEST

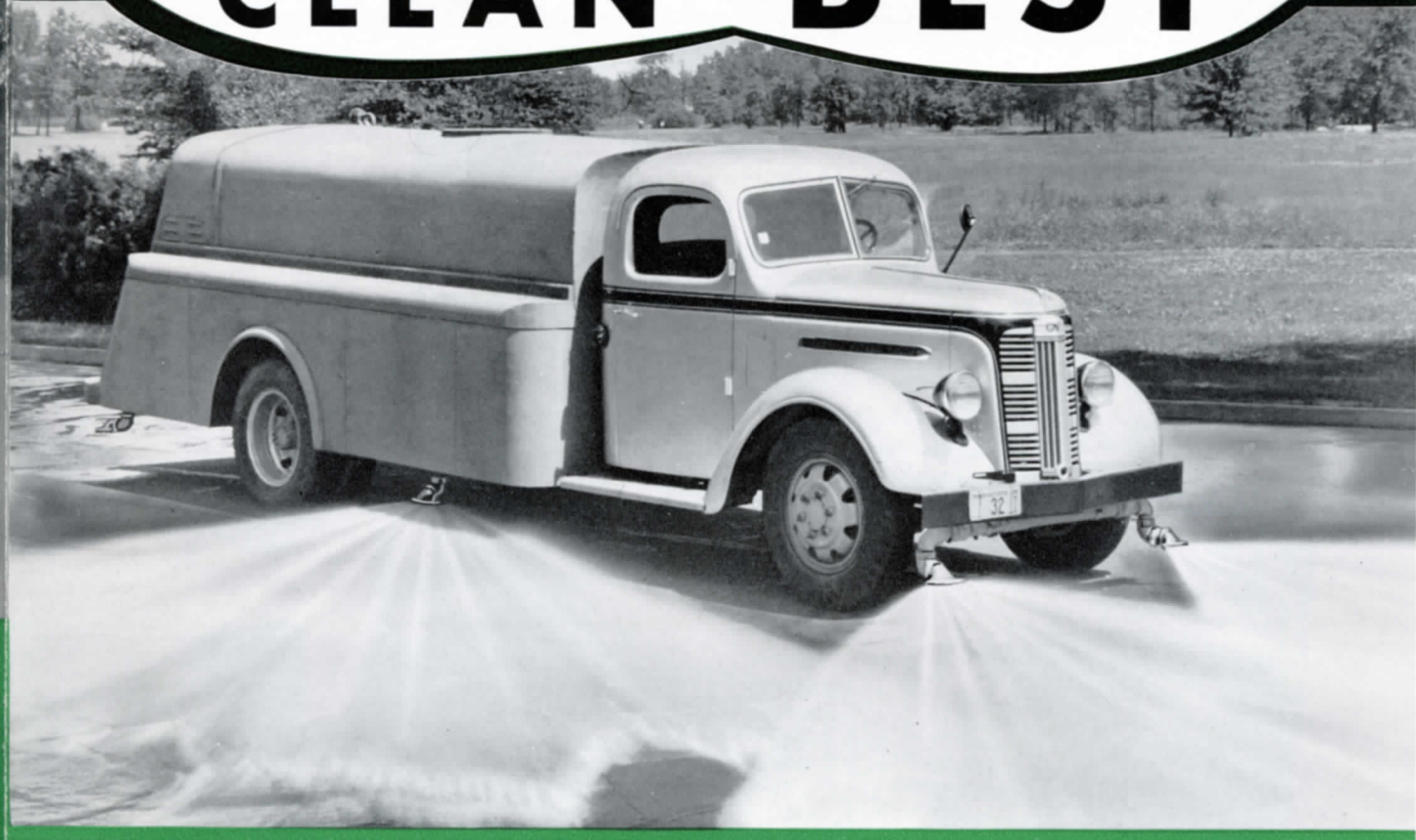


FIG. 9 STREAMLINED MODEL—3 NOZZLE FLUSHER (2 SPRINKLER NOZZLES AT REAR)

CLEAN STREETS are not only a matter of community pride, but also one of the most important requirements for protecting the civic health. Consequently, public officials are today confronted with the necessity of meeting this requirement in the *most efficient and most economical* manner.

CLEANING STREETS by washing them with water which is carried in a mobile tank and applied in fan shaped streams under pressure against the surface to be cleaned, is termed *Street Flushing*. Street flushing long ago, in hundreds of cities, proved its advantages over other street cleaning methods. The continued improvement of street flusher equipment has provided so many new, additional economies of operation that an entirely new listing of accomplishments is required.

LOWER FIRST COST—lower upkeep than any other type of street cleaning equipment.

EFFECTIVELY WASHES dust, heavy dirt, leaves, slush and snow from every type of hard surface pavement, in one operation.

WASHES DIRT TO CURB even under parked cars. Reduces amount of residue—less handling.

MORE SANITARY—eliminates dust. Wet residue does not blow away.

FASTER YEAR AROUND CLEANING. Covers more miles of streets. Cleans strip 42 feet wide with three nozzles.

EASIEST ONE-MAN OPERATION under worst traffic conditions.

GAR WOOD

LEAD IN EXC

Gar Wood has developed many recent improvements—combining modern design with efficient operation. Below is a partial list of the most important features found exclusively on Gar Wood Flushers. Many of the largest cities are demanding these exclusive features when purchasing flushers—

INCLUDE THEM IN YOUR SPECIFICATIONS.

All-welded steel suction and discharge water lines (heavy, troublesome screwed fittings eliminated). (Fig. 1)

Clamp type, flexible pipe couplings installed in all water lines—flexibility without strain—disassembly simplified. Troublesome hose connections and clamps eliminated. (Fig. 1)

Lightweight suction strainer—oversize, easily-removable, perforated brass basket—flexible inlet and outlet connections (harmful materials collected on inside walls of basket) (Figs. 1 and 2)

Pump-motor system supported on rubber springs, (rubber "in shear")—vibration and noise effectively reduced—quiet, night operation of flusher (unnecessary to insulate pump-motor housing). (Fig. 3)

Centrifugal pressure pumps, gasoline motors and flexible drive couplings. All regular production models (supplied by reputable manufacturers) assuring prompt service and parts at minimum cost. (Figs. 4 and 5)

Bronze flusher nozzles, machined to deliver smooth fan shaped streams of water at varying pressure—nozzles fully adjustable—proper angu-

larity of stream—all classes of pavement cleaned effectively. (Fig. 6)

Bronze, Globe-type flusher valves, air opened, spring closed (with renewable soft rubber valve disc). Easily serviced. (Fig. 7)

Ample air for valve operation supplied from chassis air brake system or individually mounted air compressor. Air system provided with necessary control valves and fittings for safe and efficient operation under all service conditions.

Cab valve control assembly—maximum operating accessibility without obstructing driver's vision. Actual "Finger Tip" control of flushing operation at all times. (No mechanical control mechanism to damage cab structure) (Fig. 8)

Standard or streamlined tanks engineered for correct load distribution. All-welded construction—tank quality steel—rugged without excessive weight.

Rustproof, internal fill pipe strainer with brass external cleanout plug—Gooseneck fill connection and hose adapter on top of tank or near top of rear head as desired. Cocks drain motor-pump system and all water lines.

Fig. 1

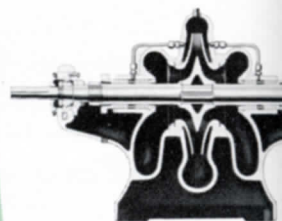
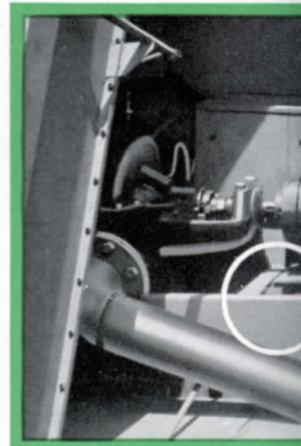
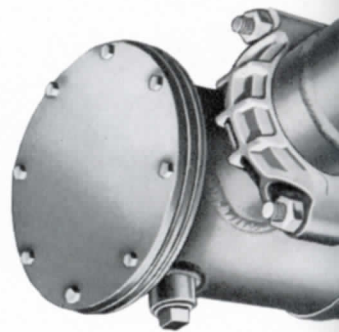


Fig. 4

Fig

STREET FLUSHERS and Pressure Sprinklers

LUSIVE FEATURES

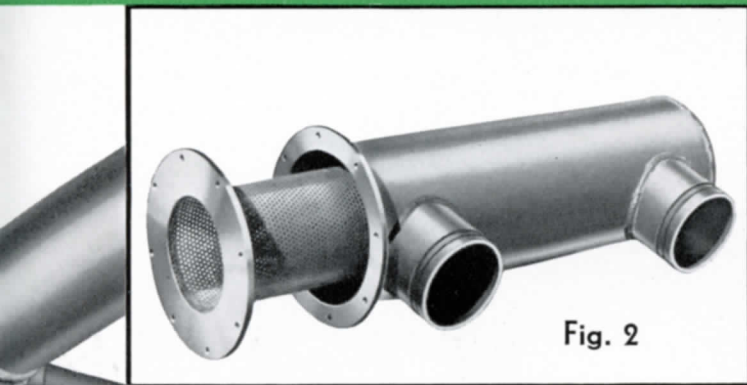


Fig. 2



Fig. 6

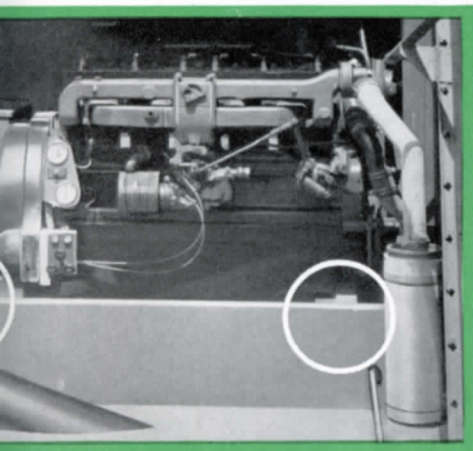


Fig. 3

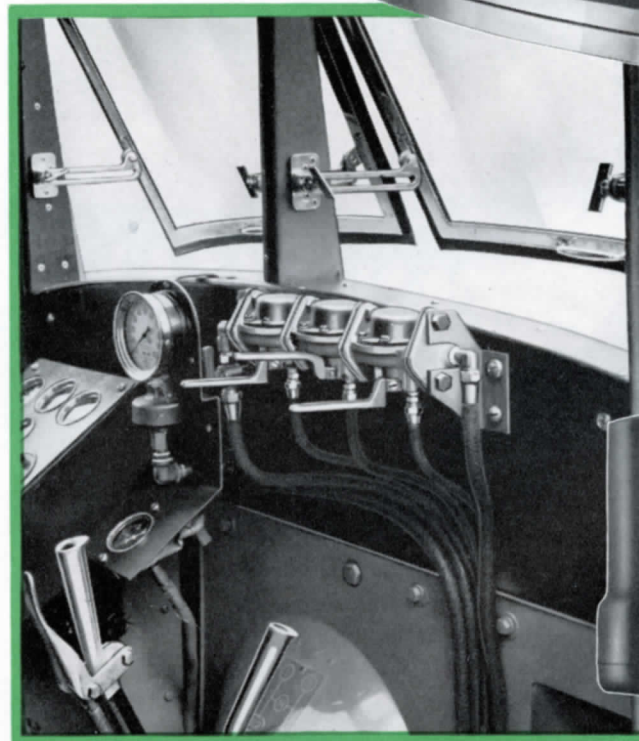
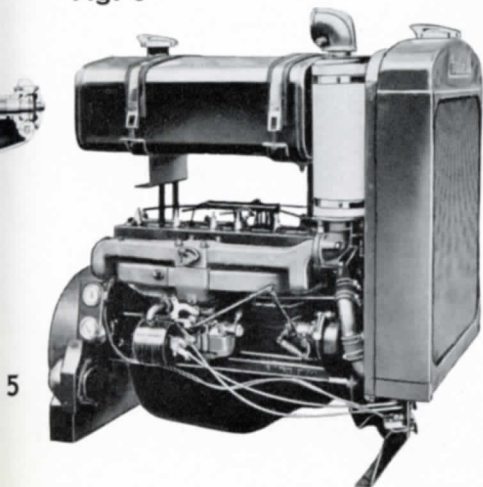
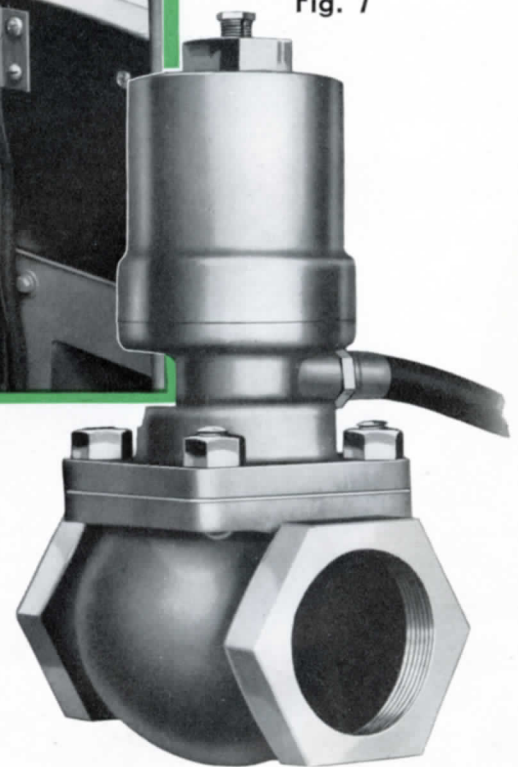


Fig. 8

Fig. 7



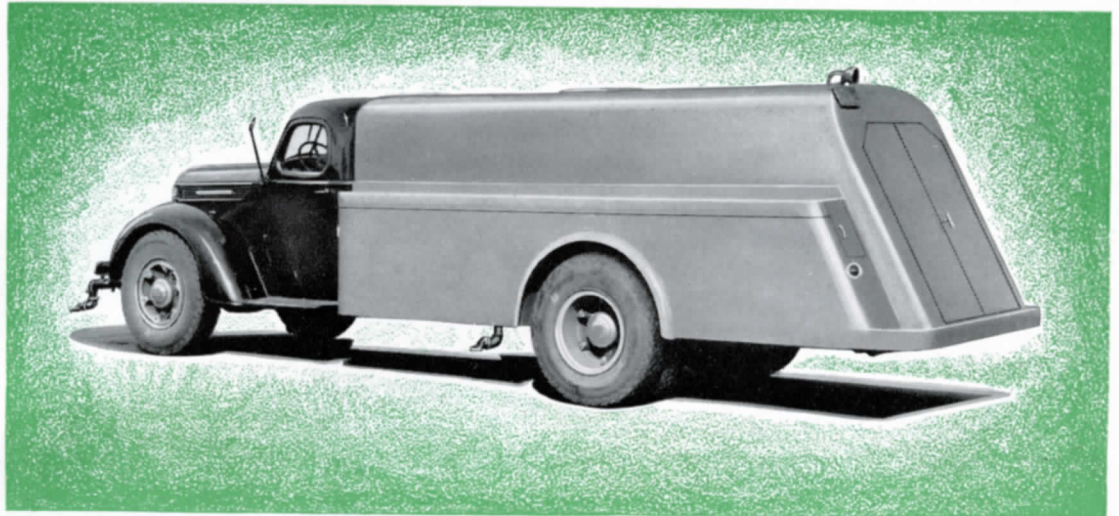
5

GAR WOOD

Streamlined SERIES

SANITARY STREET FLUSHERS

Fig. 10—1500-gallon Streamlined Model—4-Nozzle Flusher with 2 sprinkler heads at front. (See also page 1—Fig. 9.)



ALL GAR WOOD EXCLUSIVE FEATURES are incorporated as an attractive practical operating unit in the STREAMLINED SERIES. The pump-motor unit installed at rear provides greater ease of adjustment, more quiet operation, complete protection from accidental damage and weather and permits proper weight distribution.

SPECIFICATIONS

TANK—Mild tank steel—arc welded. (Hi-tensile steel if specified.) Semi-rectangular shape conforming to contour of cab. "Smooth skin" shell construction, dished heads, full height surge plates. Beavertail pump-motor housing with side hinged doors, rounded corners and rigid built-in rear bumper. Steel tread plate side walkways. Streamlined partial or full skirting with fenders. Flush manhole with water-tight bolted cover and hinged cap. Steel cradle mounting. Rustless internal fill strainer with swivel hose adapter and external clean-out. Internal overflow pipe. Prime painted.

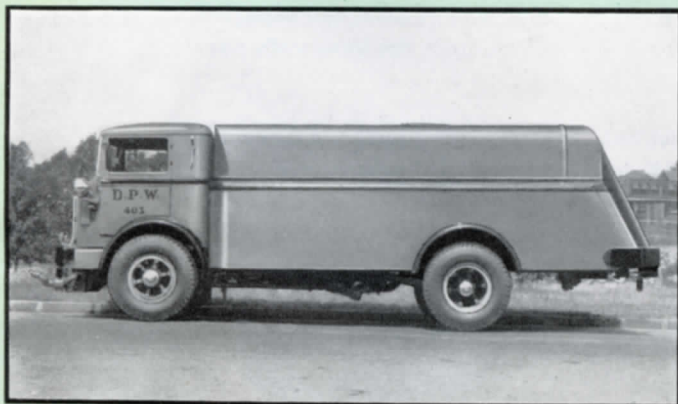


Fig. 11—2500-gallon Streamlined—3 Nozzle Flusher

LOCATION—PUMP AND MOTOR—In rear beavertail. Enclosed at front of tank if specified.

PUMPS—Centrifugal, single stage, horizontally split cast iron case, bronze enclosed impeller on alloy steel shaft—ball bearing mounted. Bronze impeller wearing rings and shaft sleeves. Automatic grease cup lubrication. Direct drive to motor through enclosed chain flexible coupling. Sizes for 2, 3 or 4 nozzles (50 lb. pressure.)

MOTOR WITH SELF STARTER—Choice of 4 or 6 cylinder open models—nationally known makes. Ample continuous duty B.H.P. for size pump used. Force feed lubrication. Water cooled. 6 volt starter, distributor ignition, ammeter, fuel pump or tank, radiator, fan, muffler, governor, etc.

VALVES AND NOZZLES—2, 3 or 4 nozzle operation as ordered—Gar Wood air valves. (Mechanical valves—if specified.)

CONTROLS—Gar Wood Air Controls for flusher valves. (Mechanical type—if specified.) Choke, starter, throttle and ignition in cab.

GAUGES AND ACCESSORIES—Illuminated capacity fill gauge in rear beavertail. Discharge pressure gauge on dash. 15 feet, 2½-inch double jacket cotton covered fire hose and female coupling.

GAR WOOD

De Luxe SERIES

CHICAGO OFFICE & SHOW ROOM

301 W. 37th ST.

Telephone BOULEVARD 2546

SANITARY STREET FLUSHERS

Fig. 12—2000-gallon De Luxe 4-Nozzle Flusher with valve and 2½" hose coupling on front pressure line. Four 50 ft. lengths of flat type firehose for parkway sprinkling carried on 4 reels in R. S. cabinet. Air controls. (See 1200-gallon De Luxe Model on cover.)

SPECIFICATIONS

TANK—Full compound curved streamlining (cab may be enclosed with tank)—mild or hi-tensile steel. Special streamlined designs.

PUMPS, MOTORS, VALVES, NOZZLES, CONTROLS AND ACCESSORIES—See Streamlined Series.



Fig. 13—Typical Fleet of Gar Wood Flushers.



Fig. 14 (above, right)—Sprinkling attachment. Adjustable brass horizontal sprinkling heads or nozzles installed at front (or rear, optional). Cab control.

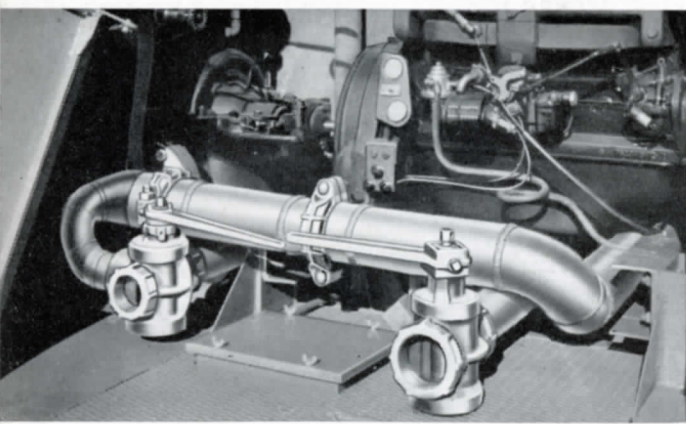


Fig. 15 (left) BOOSTER PUMP ATTACHMENT—Permits taking water from flusher tank or hydrant and using flusher pump to boost pressure through fire hose with nozzle.

SUCTION FILLING EQUIPMENT (left)—Allows filling tank from stream or other source when hydrant not available, also for pumping out flooded basements. Includes Booster attachment plus automatic pump primer, two 10-foot lengths three-inch suction hose with strainer.

ALL FLUSHERS CARRY GAR WOOD GUARANTEE!