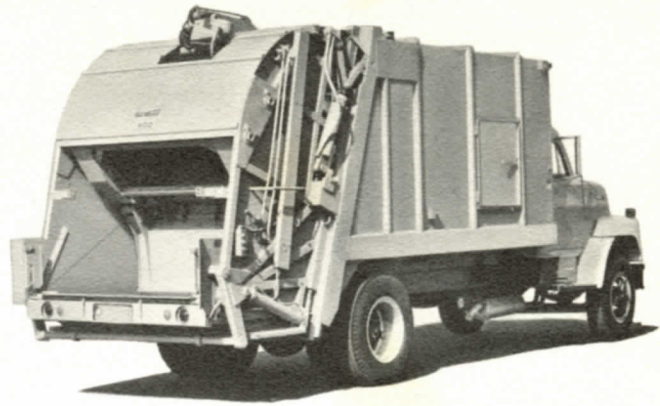


GarWood
800

GarWood
LOAD-PACKER® 800
Establishing New Standards
FOR BULK REFUSE PACKERS

GarWood

LOAD-PACKER® 800



*New Standards for
Speed, Compaction, Weight
Distribution, Ejection and Lowest.....*

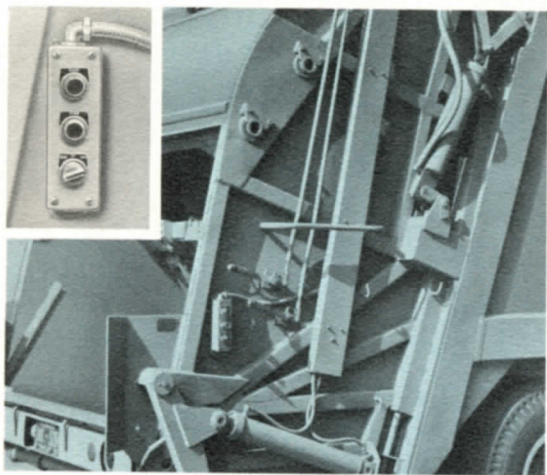
Now, in one great Load-Packer, you get all the features you need for lowest cost collection of bulk trash and refuse. A big 2-yard plus hopper, large enough to take just about everything. Fast 17-second loading cycle with only 7-second reload time . . . saves time and cuts fuel costs. Constant Density Compaction builds maximum payloads. New weight distribution characteristics for trash packers transfers more weight to the front axle. Continuous thrust, dozer-type ejection speeds up dump time. Fully enclosed front end! The all-new Gar Wood Load-Packer 800 outperforms all other bulk refuse packers, insures you lowest T.O.C.

T.O.C.*

Of Any Bulk Refuse Packer

*TOTAL OWNERSHIP COSTS





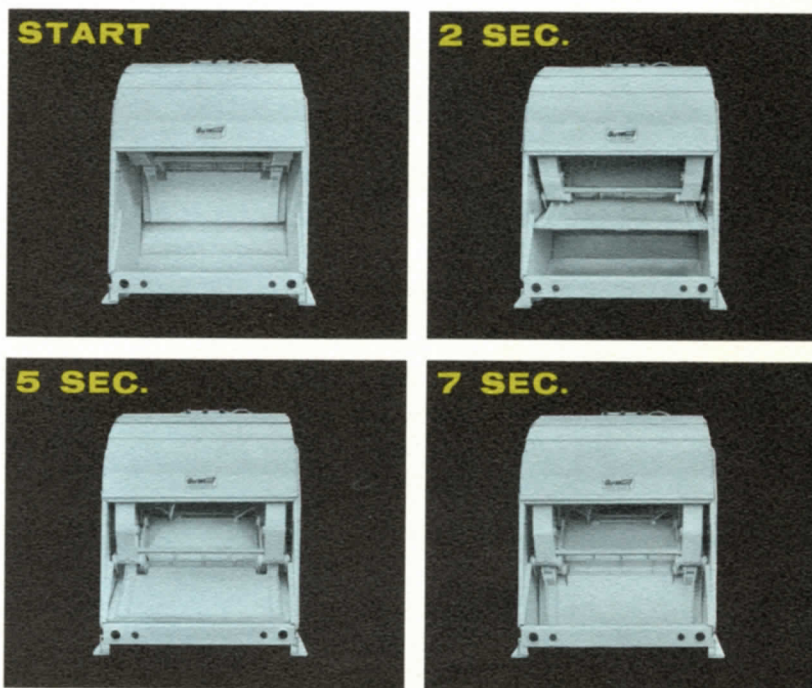
Electro-Hydraulic Controls

The Load-Packer 800 features full power controls, with electric actuation of a hydraulic control system which shifts the main valve. With this system, one touch of the start button and the unit automatically goes through its entire cycle.

In case the ram panel stops during its descent into the hopper, the operator turns an easy-to-operate selector switch from the AUTO position to RAISE. The panel then retracts and raises to the cycle stop position. The switch is turned to AUTO again, the start button is actuated and the automatic cycle is underway.

Faster, Safer Cycle... 7 Second Hopper Reload Saves Time Cuts Fuel Costs

Fast cycle time and fast reload time are important to every operator interested in reducing costs. With the Load-Packer 800 you reload in only 7 seconds, eliminating crew waiting time. The complete cycle takes only 17 seconds against as much as 38 seconds for other bulk refuse packers. This means the engine runs at high accelerated speeds a full 20 seconds less each packing cycle, adding up to huge fuel savings each year. Faster cycle time is an important factor in establishing lowest T.O.C. for the Load-Packer 800.



BIG 2-YARD PLUS HOPPER takes about everything

Refrigerators, desks, 55-gallon drums, sofas, large crates, old furniture, fenders . . . the 2-yard plus hopper takes just about everything you might encounter on residential or commercial pick-up routes. This means you can pick up everything the first time around, providing more complete service or eliminating special trash pickups. Packing panel retracts high over big refuse items such as refrigerators.

Gar Wood Transfers Over 1000 lbs. More Packer Weight to Front Axle

The superior engineering of the body and tailgate assembly plus the use of hi-tensile steel permits the transfer of over 1000 lbs. more packer weight to the front axle than other bulk refuse packers.

This better weight distribution means the Load-Packer 800 can carry an extra 1000 lbs. plus payload on the rear axle and still be legal.

1000 lbs. plus additional payload is a bonus from Gar Wood . . . it means bigger profits at no extra cost to you.



SIMPLIFIED, NO-STOP EJECTION: No Center Guide to Hinder Flow

At the dump, the rugged dozer-type ejector panel pushes out the load in one swift move. No fuel-wasting, time-wasting "start and stop, start and stop" operation. With the Gar Wood Load-Packer 800, you get complete clean-out in just 25 seconds. Because ejector panel moves on tracks located at the sides of the body, floor is unobstructed, with no center guide to hinder the free outflow of the load. Result: No hang-ups at the dump. And there's no telescopic cylinder housing that protrudes from the ejection panel surface to impede a smooth material movement or cause the load to hang between the housing and tailgate. Another important Load-Packer 800 feature: One lever automatically unlocks and raises tailgate . . . relocks tailgate after lowering automatically, too . . . speeds up dumping, driver does not have to go to back of truck.

CONSTANT DENSITY COMPACTION . . . Builds Up Maximum Loads

Gar Wood's powerful Multi-Lever design, described on page nine together with its exclusive Constant Density Compaction means unequalled payloads. With Constant Density Compaction, the ejection panel circuit provides uniquely controlled resistance against the packing action to insure loads of uniformly high density the entire length of the body. The inward movement of the ejection panel is controlled by a pressure sensing valve actuated by the packing cylinder rather than by a relief valve on the ejection panel circuit. This means that the compaction of each hopper load is the same regardless of number of stages of the

telescopic hoist that are extended. With competitive units utilizing relief setting in the telescopic cylinder circuit, resistance pressure is fully extended, at the beginning of loading . . . a time when packing resistance is most important. With Gar Wood, packing forces do not vary . . . there's no void caused by lowered resistance pressure during early loading. Retention of the compacted material doesn't vary either . . . there's no squeeze-and-let-go as with other bulk refuse packers. Multi-Lever design combined with the Constant Density Compaction gets the biggest payloads.

GarWood

LOAD-PACKER 800 HAS LOWEST T.O.C.

Of Any Bulk
Refuse Packer

**Better Design, Lighter Weight Means More Payload
Hauls Over One Million More Pounds of Refuse Per
Year at No Extra Cost to you!**

Yes, the Load-Packer 800 gives an extra 2,210 lbs. more legal payload per load and over one million per year over other bulk refuse packers. This tremendous weight saving was accomplished through better design, weight distribution and use of hi-tensile, high-yield steels.

If you are now using a competitive bulk packer, the Gar Wood 800 will give you over 2000 lbs. more payload. *Why haul dead weight?* Payload is what pays off. With the Gar Wood 800 you have more payload . . . up to 2120 lbs. more. And if you don't need that extra payload then think of the savings when you buy a truck chassis with a 2000 lb. less GVW requirement. Less initial cost . . . less insurance . . . less maintenance and less license fees too. That's why we say the Load-Packer 800 has lowest T.O.C.

YOU Put Your Dollar Value on This Extra Payload

What is this one million extra pounds of payload worth to you in extra profit . . . or think of this . . . what does it cost you to haul a million pounds of dead

Here is how the Load-Packer 800 can haul over a million pounds more!

Published weight of a competitive Bulk Refuse Packer, 20 yards	12,600 lbs.
Published weight of Gar Wood Load-Packer 800, 20 yards	10,390 lbs.
WEIGHT SAVINGS PER TRIP	2,210 lbs.
Number of trips (loads) per day	×2
WEIGHT SAVINGS PER DAY	4,420 lbs.
WORKING DAYS PER YEAR	×250
EXTRA POUNDS PER YEAR	1,105,000 lbs.

weight? How much would you save in fuel, maintenance, insurance and license fees. Over-the-highway haulers say it costs from \$1.50 to \$3.00 per year for each pound of dead weight hauled. Think of this . . . a savings of from \$3,000 to \$6,000 savings per year. A substantial amount you must admit.

3210 LBS. MORE PAYLOAD WITH THE LOAD-PACKER 800

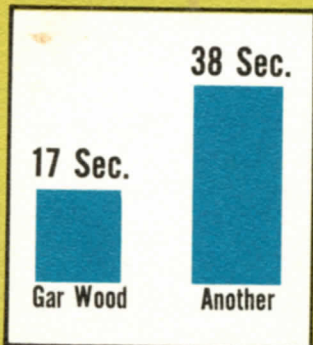
	20 yds.	25 yds.
Weight of Another Competitive Unit	12,600 lbs.	12,900 lbs.
Weight of Load-Packer 800	10,390 lbs.	10,900 lbs.
Weight Savings	2,210 lbs.	2,000 lbs.
Additional Packer Weight Transferred to the Front Axle by Load Packer 800	1,000 lbs.	1,000 lbs.
	3,210 LBS. SAVINGS	3,000 LBS. SAVINGS

Think about it . . . the Load-Packer Model 820 will give you 3210 lbs. more payload than another 20 yard single panel packer. You get a weight savings of 2210 lbs. in the weight of the unit plus the Load-Packer 800 transfers 1000 lbs. more weight to the front axle. This almost unheard of weight savings is yours in the 800. Why not satisfy yourself . . .

SHORTEST CYCLE MEANS LOWEST T.O.C.

And the Load-Packer 800 has the shortest cycle . . . just 17 seconds . . . reload in just 7 seconds. Now, the longer the engine must operate at the higher speeds for packing cycle, the higher the fuel consumption and the greater the engine wear. A shorter packing cycle also has the advantage of less wear on the transmission, the PTO, hydraulic pump and the components of the refuse unit. Obviously, the longer the cycle, the longer and harder the engine must work to do the same job.

The Gar Wood Load-Packer 800 with a short, 17-second cycle reduces fuel consumption, maintenance and prolongs the life of the truck engine, chassis and packer.



Look to the **GarWood** **LOAD-PACKER 800**

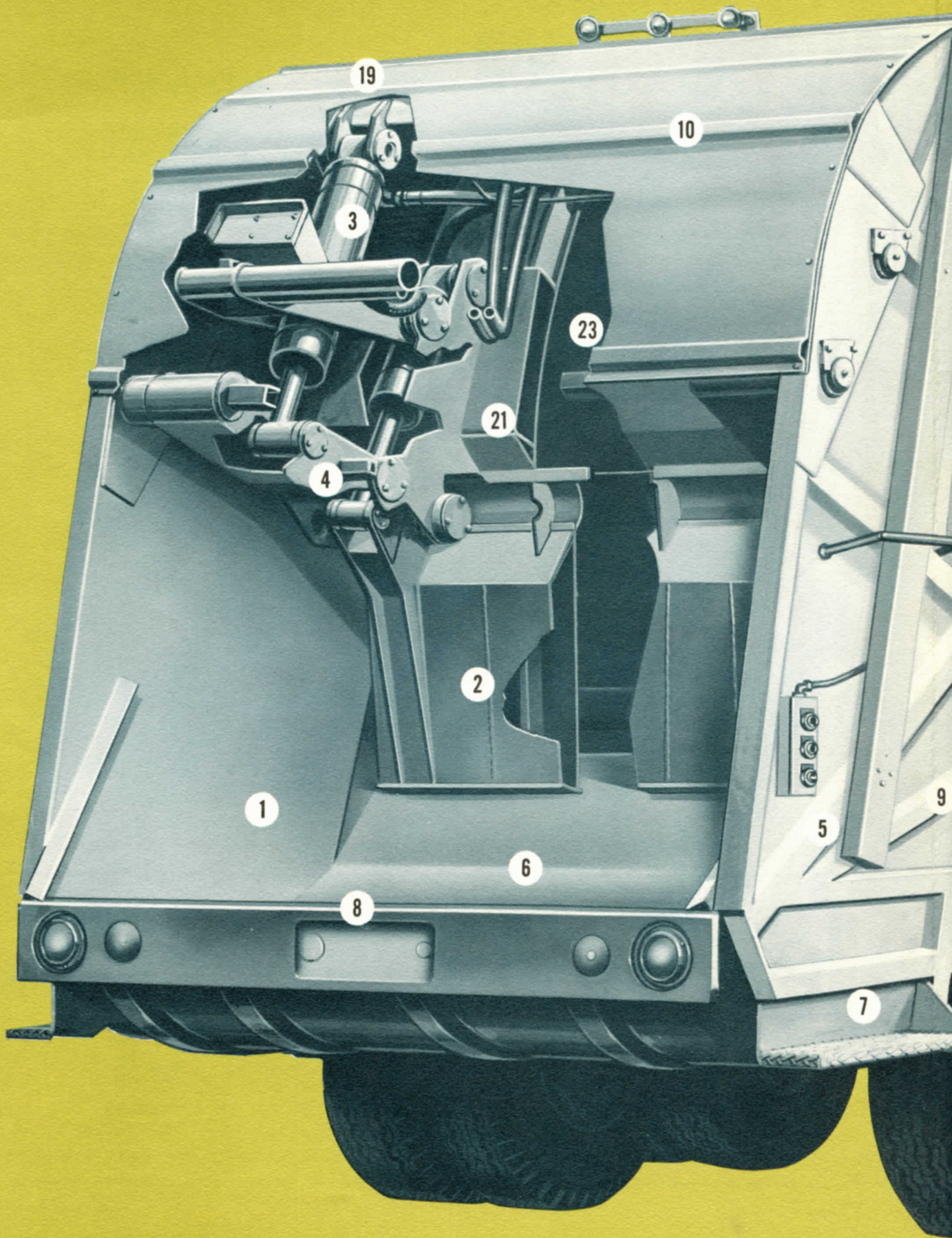
*for the Speed, Compaction
and Weight Distribution to
Handle Bulk Trash and Lower Your*

T.O.C.

Here's why: **1** **BIG 2-YARD** plus Hopper takes almost everything . . . desks, refrigerators, furniture, boxes, sofas, and bulk commercial refuse. High overhead clearance plus wide, low hopper has ample room for three men to load at once. **2** **RUGGED HI-TENSILE STEEL PACKING PANEL** fabricated for long life. Extra heavy duty linkage keeps panel in alignment. There are no roller and travel paths to clog, untrack or misalign. Entire cycle takes but 17-seconds . . . reloads in just 7 seconds. **3** **POWERFUL HYDRAULIC CYLINDERS** in combination with multiplying mechanical leverage exert over 120,000 pounds of force to the packing panel. **4** **MASSIVE LEVER ARMS** multiply packing force many times over . . . keep packing panel in alignment. **5** **ELECTRIC HYDRAULIC CONTROLS** provide electric actuation of full hydraulic control system. **6** **HEAVY DUTY HOPPER** with floor and bottom side panels constructed of 3/16" 100,000 pound yield hi-tensile, heat treated steel to resist impacts and wear. **7** **FULL LENGTH RIDING STEP** with non-skid surface. **8** **STURDY LOADING SILL** stands up under heavy abuse . . . neat appearance with recessed lights and directional signals. **9** **RUGGED TAILGATE** construction boxed for strength, yet light in weight and contoured into body for better weight distribution. **10** **MAIN HYDRAULIC VALVE MANIFOLD** reduces number of hydraulic lines and connections. **11** **AUTOMATIC POWERED TAILGATE LOCKS**—one lever unlocks and raises gate . . . locks automatically, too . . . no necessity for driver to go behind truck. **12** **CURB SIDE DOOR** for easy access to body interior is standard. **13** **CONSTANT DENSITY COMPACTION** provides the biggest loads . . . unlike competitive units, packing resistance is the same from first to last hopper load. The smooth surface

of the ejection panel with no cylinder housing, together with dozer-type curvature "rolls" refuse to top and front for greatest full load compaction. **14** **DOZER-TYPE EJECTION PANEL** pushes out load cleanly in approximately 25 seconds . . . a fraction of the time required by other bulk packers. Load can't hang up or wedge between protruding cylinder housing and the tailgate. **15** **TIME-PROVED GAR WOOD TELESCOPIC CYLINDER** powers ejection panel in one, fast continuous thrust . . . no time-consuming sequences . . . no locks and linkage to slip. Cylinder protected from weather when extended during early route pickups. **16** **EFFICIENT SIDE TRACKS** guide ejector panel . . . save space and weight over bulky center-type guides. **17** **TAILGATE CYLINDERS** unlock and raise tailgate completely above body opening. **18** **EXCLUSIVE BALL AND SOCKET HINGES** eliminate binding, insure smooth tailgate raising . . . reduce downtime and maintenance. **19** **FULL WIDTH HINGE CHANNEL** provides maximum strength and rigidity for landfill dumping. **20** **FULLY ENCLOSED BODY FRONT**; refuse can't blow out into streets and yards . . . there's less odor. Weather and dirt can't get in. **21** **REAR ENCLOSURE PANEL** extends from packing panel to top of body, sealing off the load completely. Load is not exposed as with other bulk refuse packers. **22** **LEAK-PROOF SEAL** between body and tailgate for greater sanitation. **23** **ENCLOSED HYDRAULIC COMPONENTS** protected from outside rain, salt spray and ice . . . do not work in refuse as with the other bulk refuse packers. Yes, The Gar Wood 800 is best anyway you look at bulk refuse packers . . . faster, better designed, improved weight distribution . . . on the route or at the dump, the 800 out-performs in the ways that mean reduced costs and greater profits.

for **FASTER COLLECTION** and **BIGGER PAYLOADS** of



S of BULK TRASH REFUSE



Famous Gar Wood Hydraulics

Depend on Gar Wood to give you the best in hydraulics. Hydraulic system of the Gar Wood Load-Packer 800 has been simplified by utilizing a central manifold mounted valve block to reduce the tubes and hoses. Gar Wood 3-piece laminated design hydraulic pump can be serviced in the field. High capacity bearings on all shafts. Gears and shafts are one piece, for greater strength and to eliminate deflection due to pressure. Finest quality hydraulics reduce maintenance cost, insure lowest T.O.C.

HOW THE LOAD-PACKER 800

Packs More...Packs Faster

The revolutionary new packing principle of the Gar Wood Load-Packer 800 is based on a system of packing force multipliers . . . Gar Wood calls it "Multi-Lever Compaction". The mechanism is geometrically designed to multiply its original force many times over. It operates on the principle of a powerful press as used in stamping of heavy metal components such as automobile fenders. Other bulk packers utilize a direct hoeing action with no mechanical leverage advantage.

Let's watch it go through its complete cycle.

- 1.** Panel in loading position. The panel is forward and up; the panel cylinder is fully extended while the packing cylinder, attached to the lever arm, is retracted.
- 2.** As the cycle starts, the panel cylinder retracts raising the packing panel high over the hopper refuse load.
- 3.** The packing cylinder then extends, forcing the panel down and back, crushing the refuse in the hopper.
- 4.** During the packing cycle, the panel cylinder first extends and moves the panel into the hopper. Up to this point the cycle has taken just 7 seconds and reloading can begin.
- 5.** The powerful packing cylinders now take over, pulling up on the lever arm and packing the refuse into the body. Note how the leverage angle increases as the packing cylinders pull the lever arm, multiplying the force of the panel in increasing degrees until the end of the cycle.



No Column Build Up . . . Another Reason Gar Wood Packs Bigger Loads

In addition to Multi-Lever design and Constant Density Compaction, there is a third reason that helps the 800 pack the biggest load. At the end of the compaction stroke, the panel moves upward. This short upward thrust eliminates column build up. In conventional packers, the continual packing tends to build a column straight to the front of the body . . .

until this column is broken by pressure of the ejection panel, none of the load moves to the top of the body.

The 800's final upward movement of the panel assists packing the top of the body right from the start.

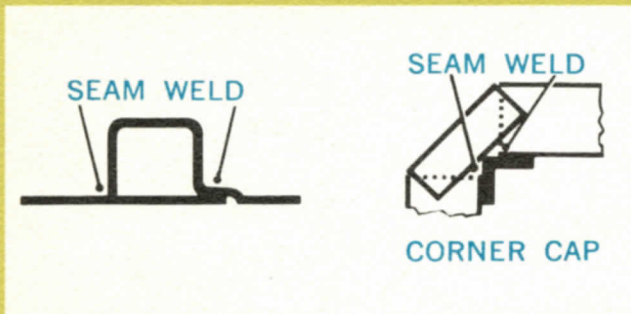
GarWood LOAD-PACKER® 800

MEANS LOWEST

T.O.C.

Here's Why Gar Wood Can Build A Strong Body and Still Weigh Less

The use of modern, hi-yield steels, together with advanced engineering design enables Gar Wood to build a lighter weight body of greater strength. In today's modern technology, greater weight does not mean greater strength. Contributing to its strength to weight ratio is Gar Wood's new Uni-Brace design. Braces for the sides and top are stamped into 11 gauge, hi-tensile steel with 50,000 pound yield, then overlapped and seam-welded to the next panel at both edges. Channel caps tie the stamped Uni-Braces together at each corner, providing a continuous, integral band around the entire body. Sides, top and bottom are continuously seam-welded. This advance design keeps the body square . . . provides strength without dead weight . . . eliminates rust pockets inherent in separate skin and brace design.

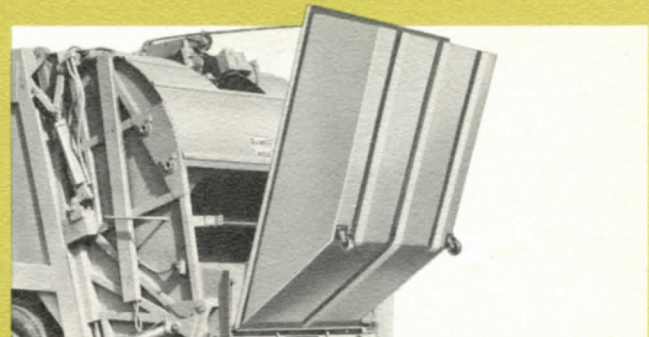


Stronger Hopper, too!

In order to withstand the powerful crushing of the Gar Wood 800, double strength has been built into the hopper. The floor and lower side panels are constructed of 3/16" 100,000 pounds yield, heat treated, hi-tensile steel. Ribbing and braces are engineered to provide reinforcement where it's required. This use of today's newest steels and superior engineering insure the ruggedness to stand up under the powerful compaction force but keeps weight to a minimum.

Up to 10-Yard Containers

A complete line of container systems is available for the Gar Wood Load-Packer 800 in sizes from one to ten cubic yard capacity with hydraulic load-lift attachment for one and two yard containers or overhead hydraulic winch loading mechanism for all container sizes. For complete details on Gar Wood container system, see Form W-295.



NATION'S FINEST DISTRIBUTOR PARTS AND SERVICE BACK-UP



The Gar Wood distributor organization covers the world . . . each distributor receives complete factory sales and service training. Each has replacement parts in stock and service personnel ready to assist you. Complete attention is yours when you deal with your local Gar Wood distributor. He is an independent businessman in your area upon whom you can depend.



LOAD-RUNNER



LOAD-PACKER 700



LOAD-PACKER 800



T-100 REFUSE TRUCK

FIRST FAMILY OF PACKERS

GAR WOOD-LOS ANGELES TRUCK EQUIPT., INC.
811 South Timson Ave.

City of Industry, Calif. 91745

Phone: 968-4634

GarWood INDUSTRIES, INC. TRUCK EQUIPMENT SALES OFFICES, WAYNE, MICHIGAN

Specifications Subject to Change Without Notice.