

• PUBLIC EVENTS

• PLAYGROUNDS

• COLLEGES & UNIVERSITIES

• PLANTS

• MISSED PICK UPS

• RURAL PICK UPS

• REST AREAS



• PRIVATE DRIVEWAYS

• HOSPITALS

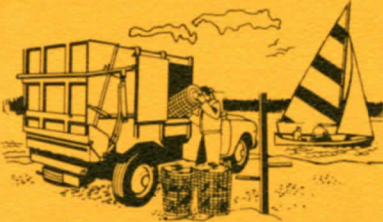
• NARROW ALLEYS

• AMUSEMENT PARKS

• TIGHT AREAS

• TRAILER PARKS

THE *GarWood* LOAD-RUNNER



• BEACH AREAS

• PARKS, PICNIC AREAS

• EMERGENCY SERVICE VEHICLE

• HIGHWAY DEPARTMENTS



**A versatile utility packer
designed to handle those special pickups**

GarWood LOAD-RUNNER

a versatile utility packer that sets new performance standards in flexibility, low cost operation

From Gar Wood, leader in the refuse industry, comes this versatile utility packer designed to handle those special collections that normally require taking a large unit out of scheduled service.

The 6½ cubic yard packer mounts on an economical one ton truck which gives it unequalled performance and maneuverability. For its application, it guarantees better fuel economy, lower maintenance, reduced insurance rates, lower cost license fee, and less initial

investment than with a large packer, plus the economies of one man operation.

Its unique design allows it to be used on many routes not suited to the larger packers or as part of a system that permits it to work with a large packer in picking up private driveways, narrow streets and alleys, missed pickups, rural and distant routes. It is capable of dumping its load directly into the larger packer, eliminating time consuming trips to the dump.

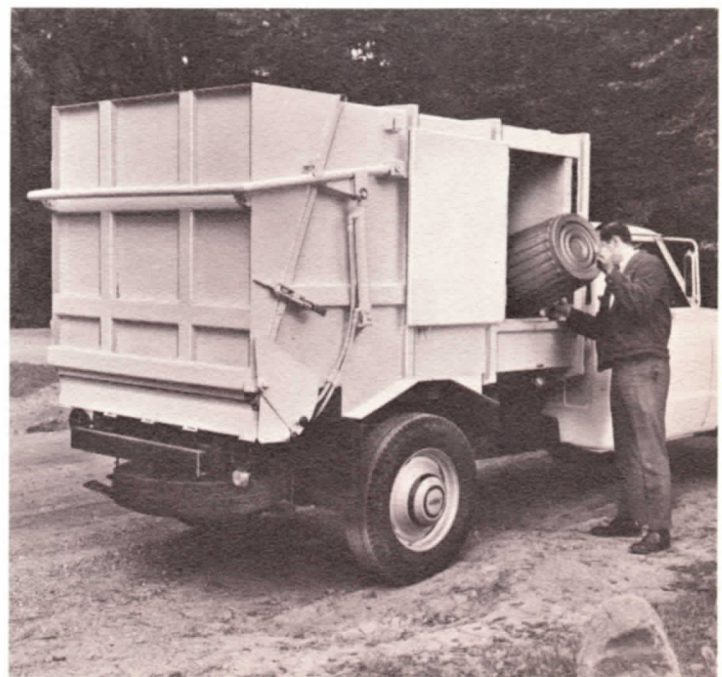
OPERATES ON ITS OWN...

Reduces the cost of special pickups

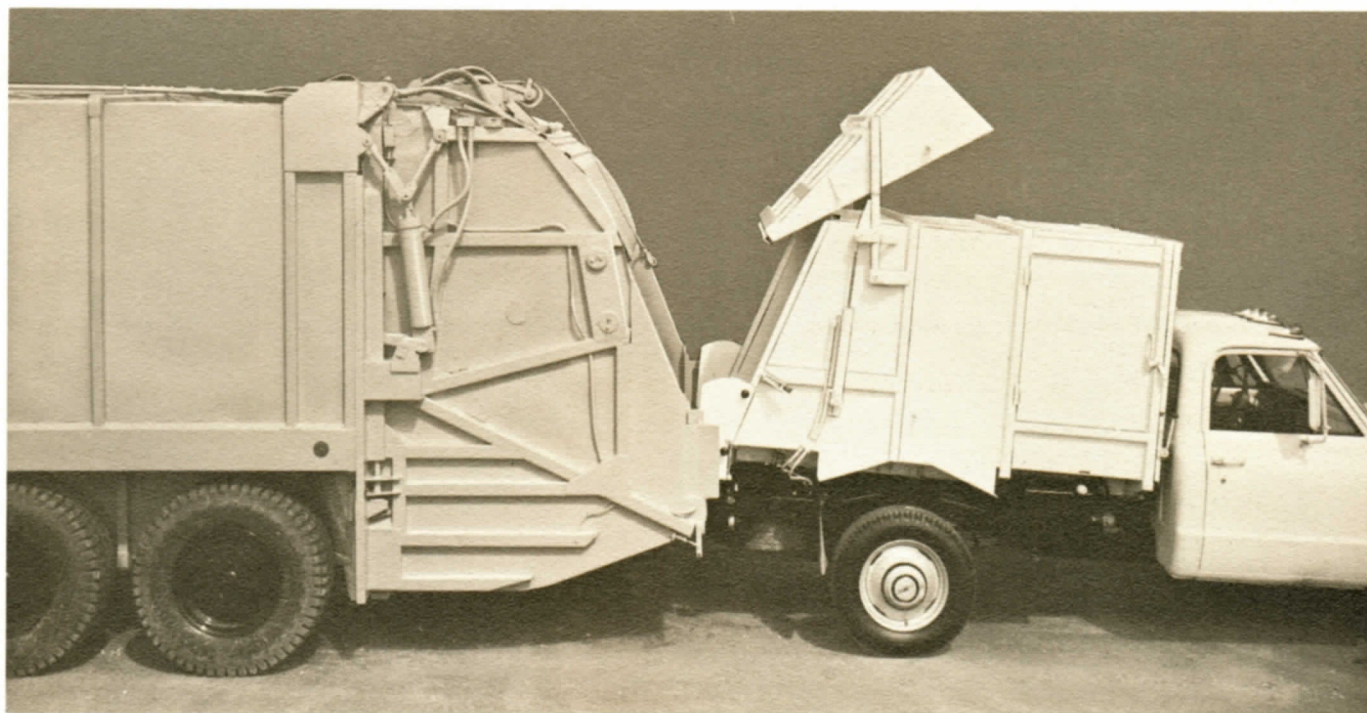
The savings of owning a Gar Wood Load-Runner are very apparent when faced with the problems of special pickups. The one-ton truck which handles this unit operates on less than one-half the fuel needed for one of the big route packers. The cost savings in fuel alone in a year's operation warrants owning a new Load-Runner. Its lighter weight also results in license fees savings over a year's service.

Doubles as a route supervisor's vehicle

One ideal application for the Load-Runner is as a route supervisor vehicle. The low operating expense plus the all-round flexibility gives this unit an advantage over any other method. With this unit the route supervisor can cover his route, handle missed pickups, improve service and create additional customer good will.

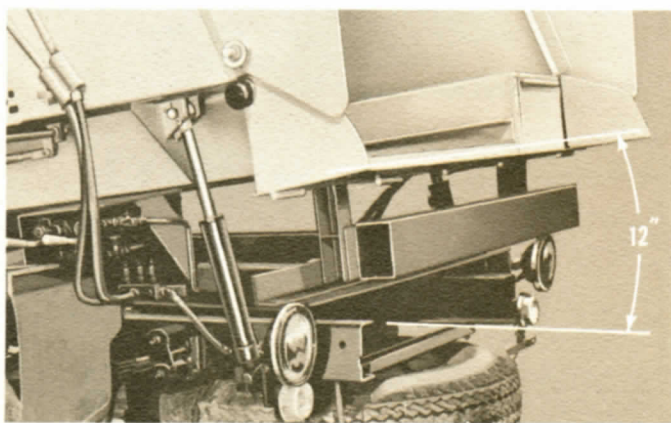


A Gar Wood exclusive! Load-Runner dumps into big rear loading units



...OR AS PART OF A SYSTEM!

Body raises hydraulically to match larger packers!



A Gar Wood exclusive on the Load-Runner allows its body to raise as much as 12 inches to match the height of the loading hopper on any rear loading packer. A single control lever hydraulically raises or lowers the body to the desired height. Twin 1½" single action cylinders provide enough power to handle any load. This loading feature, found only on the Gar Wood Load-Runner, saves time and money in trips to and from the dumps.

Operates as a Satellite

Many refuse collection routes cover high volume areas where large 25 yard packers are the only economical unit to use. These same areas, however, include narrow alleys, trailer parks and other tight spots that make pickups difficult with larger units. The Gar Wood Load-Runner, with the maneuverability of a pick-up truck, is the answer. It negotiates tight areas, makes pickups where crews often had to carry out containers by hand. The loaded Load-Runner backs up to the large packer and dumps its payload quickly and easily into the hopper of the packer. It then returns for another load, eliminating any lost time to the dump.

HOW LOAD-RUNNER CAN IMPROVE YOU

1. Dumps Into Rear Loading Packers — A Gar Wood exclusive . . . only Load-Runner is able to adjust its body height to dump its load directly into a big rear loading packer. Eliminates time consuming trips to the dump. Fewer trips mean less operating expense and longer unit life.

2. Highly Maneuverable — Mounted on a one-ton chassis, the Load-Runner handles like a pick-up truck. It negotiates narrow alleys and tight turns easily. It goes up and down private driveways without causing damage to the pavement.

3. Easy Loading—Large loading doors, located on each side, provide ample loading area. A low 48" loading height requires minimum lifting. Another loading advantage is that the tailgate can be raised for hauling large objects like washers, dryers and refrigerators.

4. Complete Load Ejection — An ejection panel powered by a two-stage hydraulic cylinder insures complete load ejection. The cylinder is positioned horizontally, extending into the cab between the two bucket seats for straight power thrust.

5. Better Weight Distribution—The 6½ yard body on a one ton chassis permits maximum payload without overloading the rear axle and tires. The high density load, being achieved with the Load-Runner, would put a large body overweight with minimum loading. The Load-Runner body design positions the center of the load forward of the rear axle. This better weight distribution improves handling characteristics and increases tire and drive component life.

6. Lower Operating Costs — The size and weight of the Gar Wood Load-Runner assures lower initial costs, lower fuel costs, less maintenance, lower license fees, plus the economies of one man operation. The Load-Runner is also economical for use as an emergency service vehicle when not out on special collections.

7. High Density Compaction — The trade mark of all Gar Wood packers is high density compaction. The right combination of hydraulic pressure with a properly designed packing panel and overall load designed body, provides the extra measure of quality that guarantees you full packing performance at all times.

8. Built Like The Big Ones — Gar Wood designed and built the first compaction type packer way back in 1938 and has set the pace ever since. The new Load-Runner has many of the features found in Gar Wood's line of rear Load-Packers. The hydraulics, for example, are the same basic design as that found on its larger packers. The body, like the larger units, is manufactured from high tensile steel which results in a stronger, lighter weight unit.

7

Mounts on one-ton chassis for greater economy and maneuverability.

1

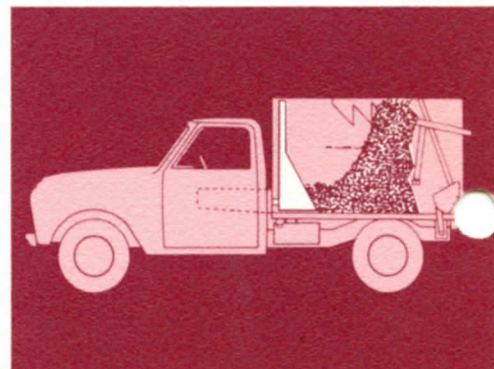
Large rear door swings up and away for close contact with rear loading packers during load transfer.

Load retainer teeth are located on the inside of the body to aid load compaction.

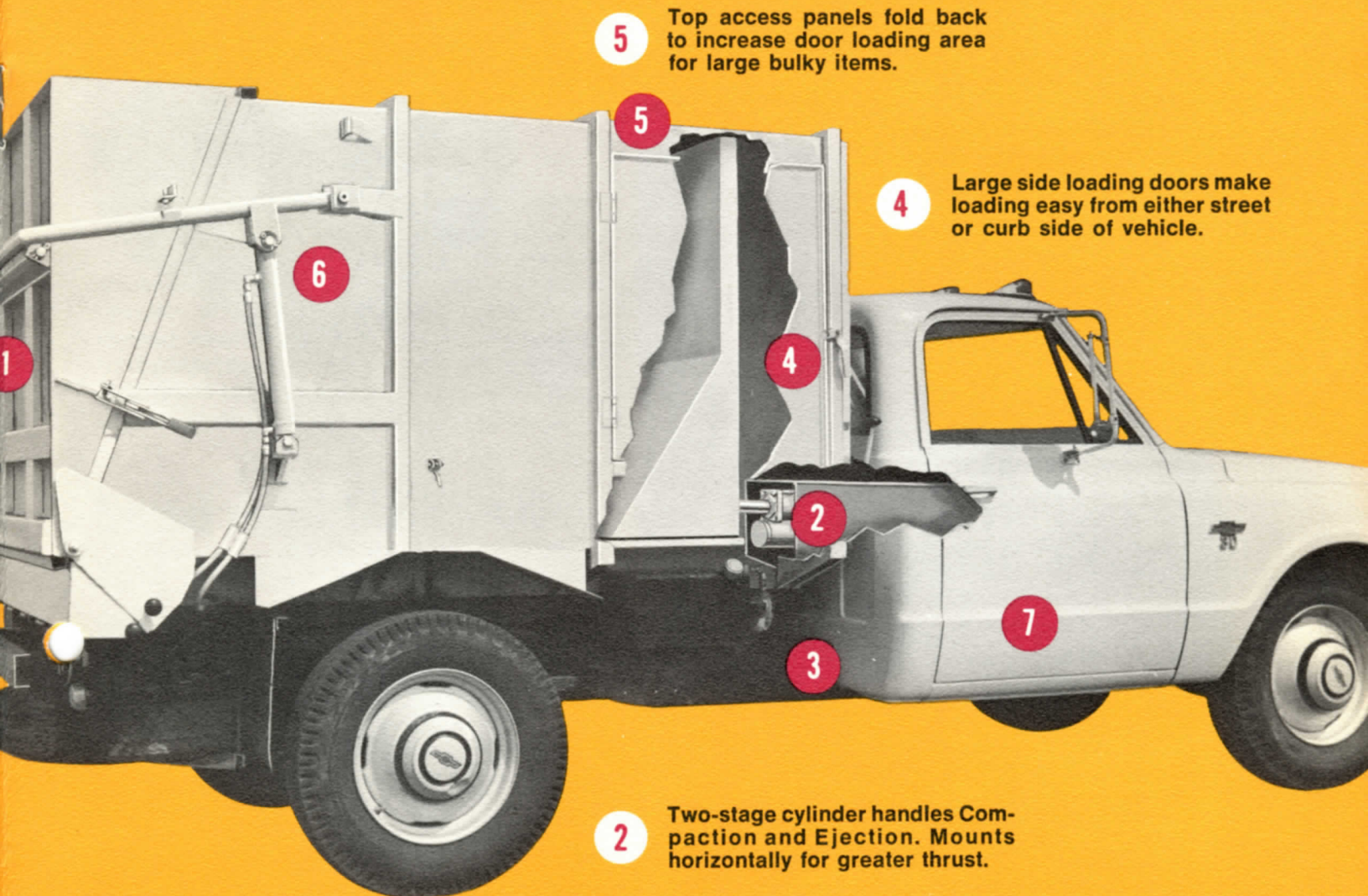
Built from the same hi-tensile steel used on large packers for greater strength and longer life.

Simplified controls for packing and ejecting loads and raising body for load transfers.

LOAD



OUR REFUSE OPERATION...



5 Top access panels fold back to increase door loading area for large bulky items.

4 Large side loading doors make loading easy from either street or curb side of vehicle.

2 Two-stage cylinder handles Compaction and Ejection. Mounts horizontally for greater thrust.

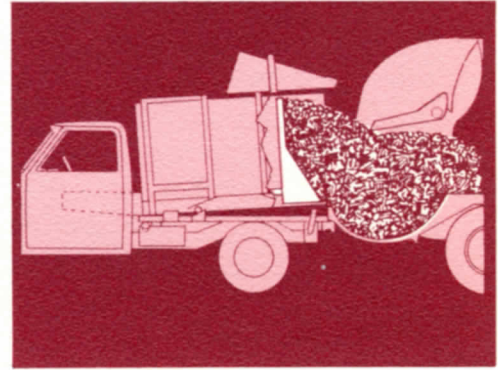
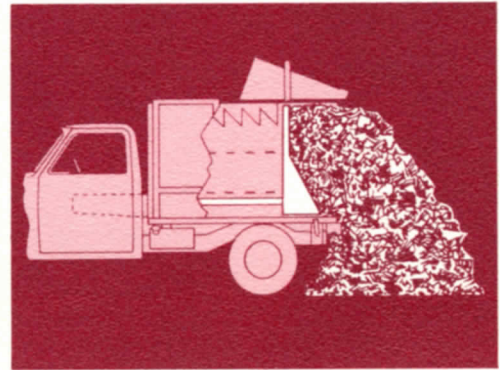
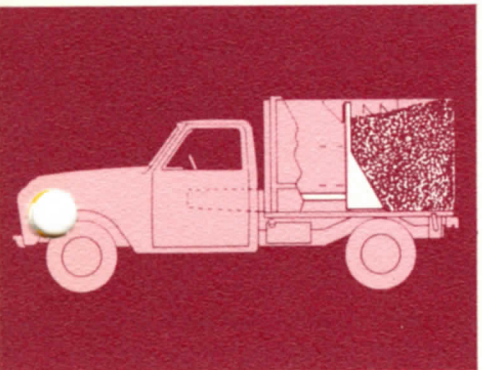
3 All packing ejection and body lift operations are handled hydraulically.

6 Body lifts as much as 12 inches at the rear to match height of most rear loading packers.

COMPACT

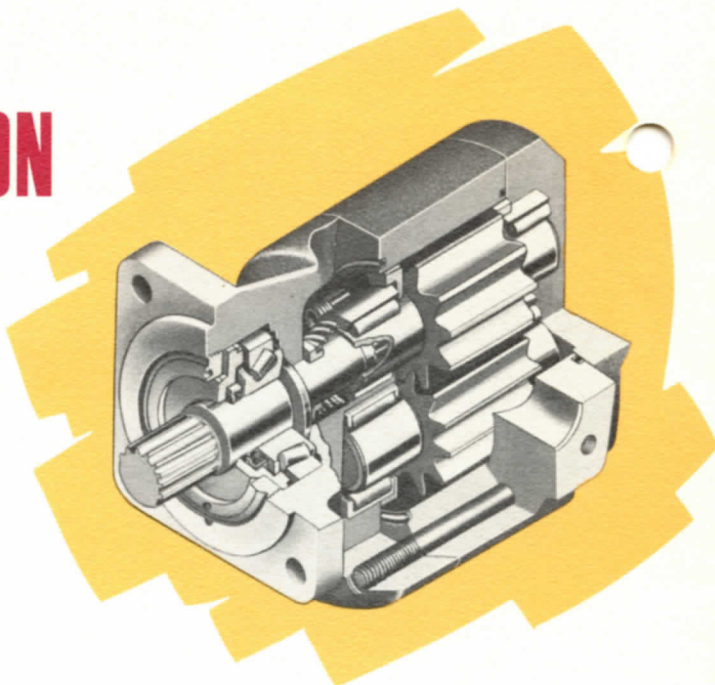
EJECT

TRANSFER



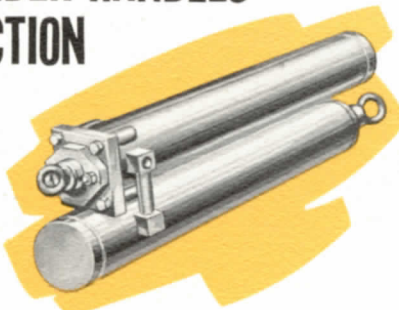
LOAD-RUNNER OFFERS FULL HYDRAULIC OPERATION

All packing, ejecting and body lift operations are performed effortlessly with work saving hydraulics. The 10 GPM gear pump is 3-piece laminated design that can be serviced in the field. High capacity bearings are fitted on all shafts for longer life. Gears and shafts are one piece construction for greater strength and the elimination of deflection due to pressure. The pump is bolted directly to the P. T. O., eliminating drive lines and universal joints. Gar Wood hydraulics have been job proven in millions of hours of operation.



TWO-STAGE CYLINDER HANDLES COMPACTION-EJECTION

The two most important functions a packer must perform are compacting the load and insuring complete clean ejecting of the load. In the Gar Wood Load-Runner these functions are handled by a two-stage telescopic cylinder. This cylinder, unlike those in other one-ton mounted packers, lies horizontally. During packing and ejecting operations, the thrust of the cylinder is straight out exerting the greatest force where it is needed, directly in the direction of the load. This unique cylinder arrangement in the Load-Runner is simple because no mechanical devices are needed to clutter the front of the body. The cylinder on the Load-Runner extends through an opening in the truck cab between the bucket seats, utilizing an area which is normally wasted space.



HYDRAULICALLY OPERATED TAILGATE



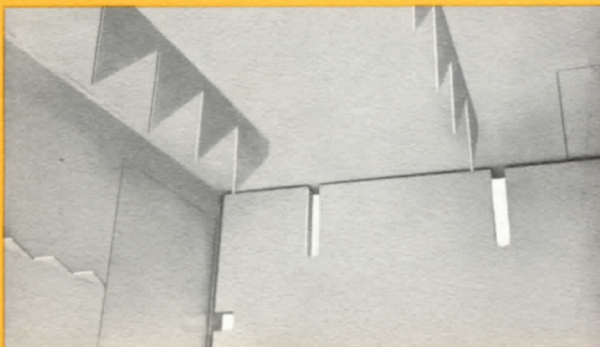
The large 62" x 59" tailgate on the Load-Runner opens vertically to allow contact with big rear loading packers during load transfer operations. The tailgate hydraulic mechanism is designed so that the gate remains closed to contain the load until the two vehicles are properly mated. Another advantage of the large tailgate . . . the Load-Runner can handle refrigerators, washing machines and a wide variety of furniture and rubbish through the rear opening. Two double acting hydraulic cylinders provide the power to operate the tailgate.

FEATURE FOR FEATURE BUILT LIKE THE BIG ONES

Large 30" x 38" side door loading

Cans, barrels, boxes or containers are all easily loaded into the Load-Runner through large side loading doors. These doors, one on each side of the body, are located just a step away from the operator or passenger side of the cab. A 48" loading height makes loading the body easy from either the street or curb side of the vehicle. Both doors are fitted with pivot type door latches and spring catches for open travel.

Load retainer teeth aid compaction



Welded to the inside top of the packer body are two rows of load retainer teeth. They are approximately 10 inches long and 1/8 inches thick. Their function is to snag boxes, cardboard or other loose refuse and hold them firmly against the packed load. They prevent large loose items from falling back into the loading area or falling out onto the street.

Top access panels increase loading area

For increased loading area, hinged panels are provided at the top portion of each side loading door. These panels fold over, eliminating the top section of the door opening and move it back into the roof line by approximately 8". Large barrels and cans are then easily positioned so their entire contents can be dumped.



BACKED BY THE LEADER IN REFUSE COLLECTION EQUIPMENT



LOAD-PACKER 700



LOAD-PACKER 800

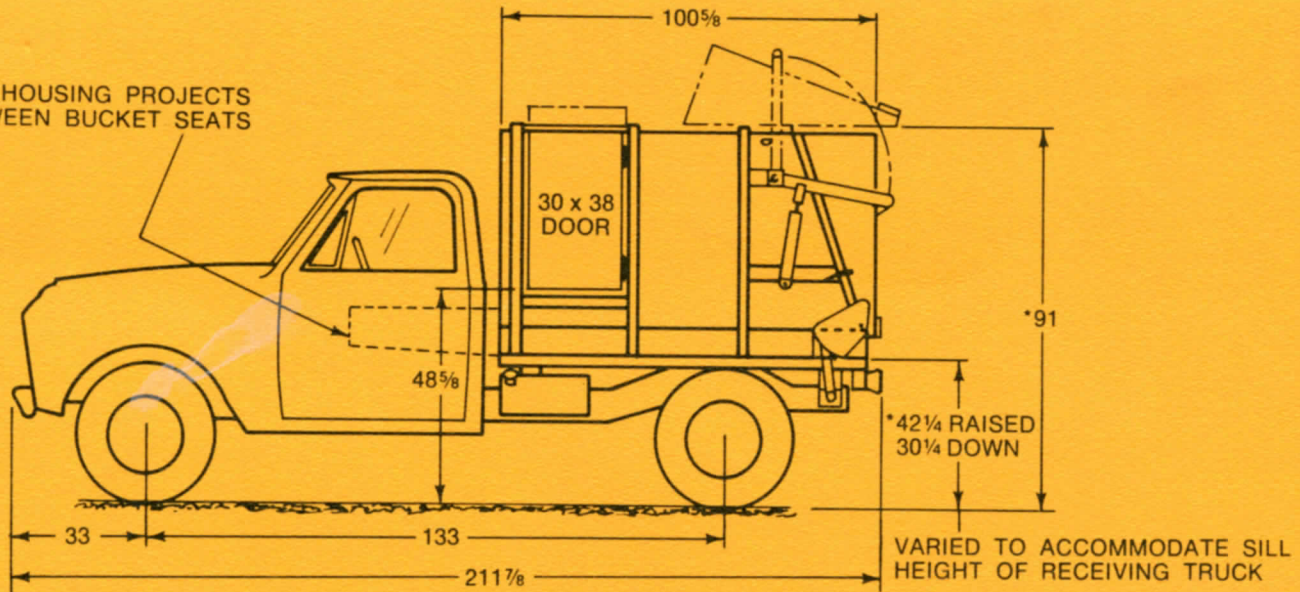


T-100 REFUSE TRUCK

More than 30 years ago Gar Wood designed and built the first compaction type packer and since that time has lead the way in every major innovation in the refuse industry. Now with the Load-Runner in its line, Gar Wood can serve the smallest special pick up to those requiring capacities of 16, 18 and 25 yards or conventional mounted packers to 30 and 40 yard capacities in their line of unitized packers. The packer body on the Load-Runner is built from the same hi-tensile steel used on the larger packer line.

GarWood LOAD-RUNNER

CYL. HOUSING PROJECTS BETWEEN BUCKET SEATS



SUGGESTED VEHICLE SPECIFICATIONS

Capacity 1 Ton
 Wheel base 133 - 60" CA
 Engine V6 or In Line (292-305 Cu. In. Disp.)
 Transmission 4 Sp. Stick Shift—Optional Automatic
 Standard Cab with Bucket Seats
 Tires 8-19.5-10 PR. Front & Rear & Spare
 Heavy Duty Front & Rear Springs
 Auxiliary Rear Springs
 Vacuum Brake Booster
 Heavy Duty Clutch
 Heavy Duty Battery
 Chassis—GMC (CM 3600V) (1969)
 Chassis—Chev. (CS 31003) (1969)
 Chassis—IHC (1300C) (1969)
 Chassis—Ford (F-350) (1969)

PACKER SPECIFICATIONS

Packer Body Capacity 6 1/2 yds.
 Side Loading Door (2) 30" x 38"
 Tail Gate 62" x 59"
 Ejection Cylinder 2 Stage
 Body Raise Cylinder Single Acting
 Tail Gate Cylinder Double Acting
 Pump 10 gpm (hp)
 Packer Body Length 100 5/8"
 Height from Ground 91"
 Loading Height 48 5/8"
 Body Width 65"
 Body Raised (Ground to chassis) 42 1/4"
 Body Lowered (Ground to chassis) 30 1/4"
 Single Control Packing & Ejecting
 Weight 2750 Lbs.



Nation's Finest Distributor Parts and Service Back-Up

The Gar Wood distributor organization covers the world . . . each distributor receives complete factory sales and service training. Each has replacement parts in stock and service personnel ready to assist you. Complete attention is yours when you deal with your local Gar Wood distributor. He is an independent businessman in your area upon whom you can depend.

GAR WOOD-LOS ANGELES TRUCK EQUIPT., INC.
 811 South Stimson Ave.
 City of Industry, Calif. 91745
 Phone: 968-4634



INDUSTRIES, INC. TRUCK EQUIPMENT SALES OFFICES, WAYNE, MICHIGAN