

*GarWood*

**DISPOS-HAUL  
SYSTEM**



loads . . . unloads and parks containers  
in  $\frac{1}{2}$  the time of other units.

# GarWood DISPOS-HAUL

loads . . . unloads and parks contained

Two hydraulic motors protected by steel plate provide power

Maximum dump angle 50°

Five-step ladder for inside inspection

Handles legs on two, three capacities to

Heavy-duty box-section steel frame

Double-acting twin cylinder direct lift underbody hoist

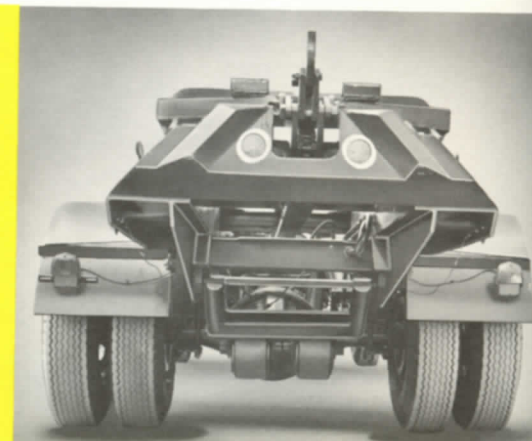
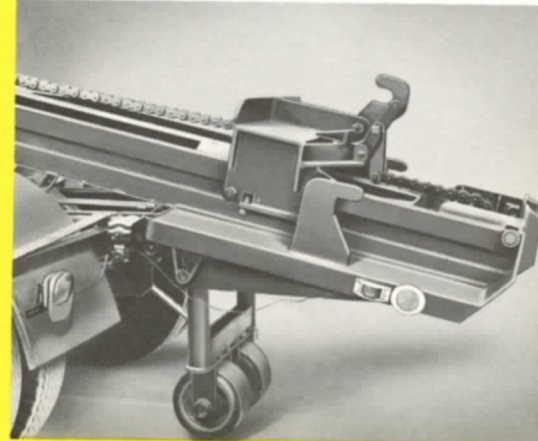
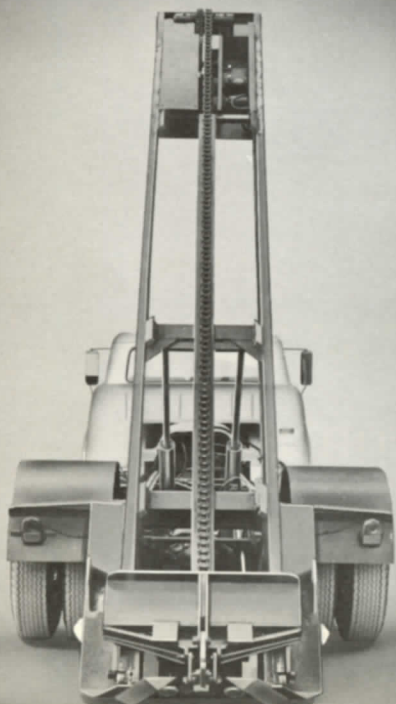
Easily accessible hydraulic valve, piping and oil tank

Positive 3-point container hold down

Hydraulically operated stabilizer wheels controlled from cab

Four-wheel roller carriage with hook

Solid rubber container rollers



**Automatic Positioning of Container Hook . . .**  
Carriage hook springs into vertical position to engage large catch on lower portion of container.

**Dependable Continuous Chain Drive . . .**  
Two hydraulic motors located at the front of the tilt frame loader drive the 38' long durable roller chain . . . no winch or cable.

**Self-aligning Loader Carriage . . .**  
Sloping guides on either side of carriage help center container on the tilt frame to make exact manual or cable positioning unnecessary.



# L SYSTEM

## rs without the operator leaving the cab!

payloads  
axle truck chassis  
0 cu yd

Lightweight, strong  
12-gauge steel  
container

Faster cycle only  
32 seconds

Split-barn door  
type tailgate

Discharges  
container  
quickly

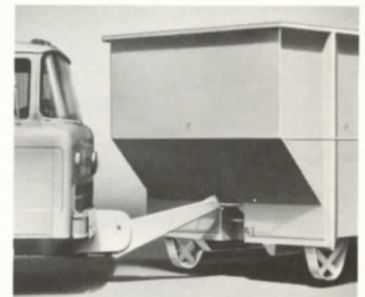


### *Gar Wood Dispos-Haul System increases efficiency... reduces cost...*

Loading . . . Unloading and parking drop-off containers are no longer time-consuming, inefficient operations with the Gar Wood Dispos-Haul Loader and Container System. The Gar Wood Dispos-Haul System offers more than other conventional bulk refuse hauling units . . . in operation time . . . in providing more safety . . . in increasing overall operating efficiency. The fully automatic hydraulic power system makes loading, unloading and parking containers a continuous cycle operation. The Gar Wood Dispos-Haul system is easy to operate. The operator never leaves the cab to make cable hook-ups or any other adjustments, except to unlatch the split-barn door type tailgate when dumping container contents. It's the newest approach to reducing labor and bulk hauling operational costs . . . the Gar Wood Dispos-Haul System.

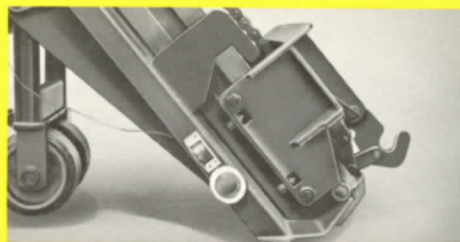
### **Power up . . . power down front bumper hook**

Parking empty containers is no problem with hydraulically powered front bumper hook. It extends to a 50-inch length and engages a smaller catch on the empty container . . . works the same as backing a semi-trailer into position.

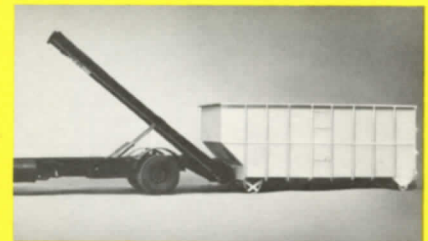


## Positions and loads container in **32** seconds

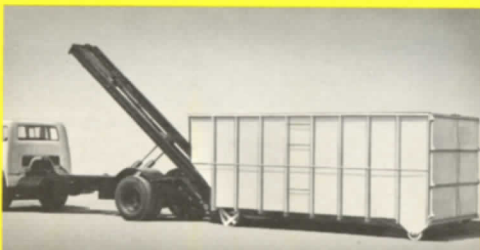
The following five photo sequence shows the Gar Wood Dispos-Haul System in action . . . loading a container in 32 seconds.



**Carriage Hook Cocked**



**Container Positioning**



**Container Hookup**



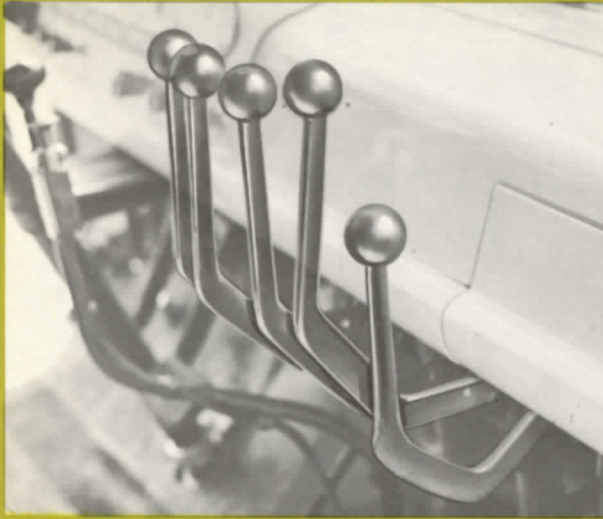
**Container Ascent**



**Loaded Securely**

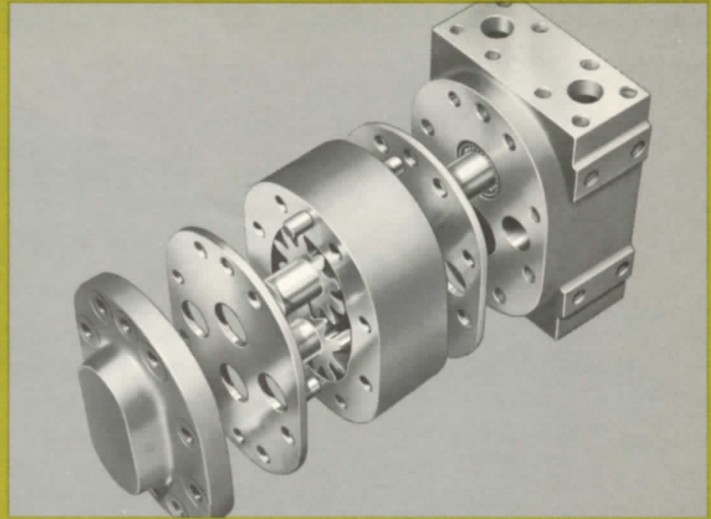
# GarWood DISPOS-HAUL SYSTEM

... fast ... efficient ... economical



### Fully Controlled from Cab

Power-Take-Off and four knob levers control loading . . . unloading . . . hoist lifting of tilt frame . . . and parking container operations.



### Famous Gar Wood Three-Piece Laminated Pump

The Gar Wood gear pump design insures positive accuracy, long life and greatest operational economy. The precision design with roller bearings on all shafts insures longer life and less damage from wear and extreme pressures.



### BACKED BY NATION'S FINEST DISTRIBUTOR ORGANIZATION

The Gar Wood distributor organization covers the world . . . each distributor receives complete sales and service training from factory specialists . . . each has replacement parts in stock and service personnel ready to assist you.

## SPECIFICATIONS

### OPERATIONAL

Capacities . . . . .	10, 20, 30, 40 cu. yd.
Weight . . . . .	5,250 lbs.
Dumping Angle . . . . .	50°
Length (Loader tilt frame) . . . . .	20 feet
Height above truck frame . . . . .	10½ inches
Front Hook Length (Extended) . . . . .	50 inches
Chain Length, Overall . . . . .	38 feet
Operational Chain Length . . . . .	18 feet

### HYDRAULIC

Operating Pressure . . . . .	1,300 psi
Pump Capacity (1,000 rpm) . . . . .	23 GPM
Two underbody direct lift cylinders (double acting) . . . . .	5 in. dia.
One front bumper hook cylinder (double acting) . . . . .	4 in. dia.
One rear stabilizer wheels cylinder (double acting) . . . . .	4 in. dia.

### TRUCK REQUIREMENTS

G.V.W.—dependent on load to be carried. Minimum suggested G.V.W. rating is 27,500 pounds.

Tilt cab recommended so operator can have complete visibility to operate front bumper hook and provide better maneuverability.

Back of cab to rear axle—138 inches to 148 inches.

### AVERAGE OPERATING TIMES:

Pull up container to full loaded aboard position . . . . .	32 seconds
Set off container on-ground unhooked . . . . .	32 seconds

### CONTAINER

Design is 12 gauge sheet steel throughout . . . 3" structural channel cross bolsters . . . 5" structural longitudinal beams . . . formed side braces . . . and split-barn door type tailgate.

**GarWood INDUSTRIES, INC.** TRUCK EQUIPMENT SALES OFFICES • WAYNE, MICH. • RICHMOND, CALIF.  
TRUCK EQUIPMENT PLANTS IN: WAYNE, MICH.; RICHMOND, CALIF.; EXETER, PA.; ENTERPRISE, ALA.; and MINDEN, LA.

Specifications Subject to Change Without Notice.