



# The New **LOAD-PACKERS**



The Most Famous  
**REFUSE COLLECTOR**

... **NOW** Better Than Ever

## **15 MAJOR IMPROVEMENTS**

- 1 Larger Capacity
- 2 Fully Automatic
- 3 Finger Tip Control
- 4 Wider Hopper
- 5 Lower Loading Height
- 6 Safety Riding Step
- 7 Greater Compaction
- 8 Improved Retaining Panel
- 9 Optional Sump Tank
- 10 Improved Hydraulic System
- 11 Streamlined Modern Design
- 12 Leak Proof
- 13 Simplified Mounting
- 14 Tapered Body
- 15 Improved Dumping Hoist

# GarWood LOAD-PACKERS for L

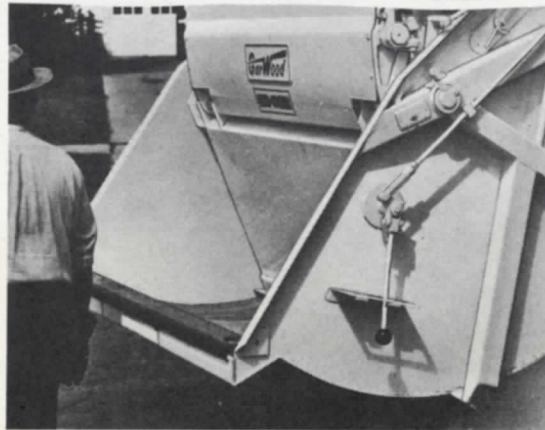
**1. LARGER CAPACITY WITH STANDARD WHEEL BASE:** Advanced engineering increases capacities and still keeps wheel base requirements to a minimum. New 10, 13 and 16 cu. yd. Load-Packers cut costs with larger loads and fewer trips.

**2. FULLY AUTOMATIC . . . NO LABOR:** No heavy doors to close or refuse is compacted from the loading body in one, fast operation. Ram opening automatically while crew makes ne



**3. FINGER-T**  
accessible lev  
ing cycle . . .

**5. LOWER LOADING HEIGHT:**  
Less physical effort to lift and  
Crew men can keep a faster p



Automatic ram means loading crews can make next pick-up during compacting cycle. Hopper reopens automatically.

**6. SAFETY RIDING STEP:** Greater stand  
easier accessibility. Less walking between pick

**7. GREATER COMPACTION:** More direct  
material being compacted . . . insures larger l

**8. NEW HYDRAULICALLY CONTROLLED**  
retention of all refuse in body. Less space b

**9. OPTIONAL SUMP TANK:** Provides for  
cess liquids drained from refuse being compac

**10. IMPROVED HYDRAULIC SYSTEM:** M  
low pressure reduces maintenance requireme

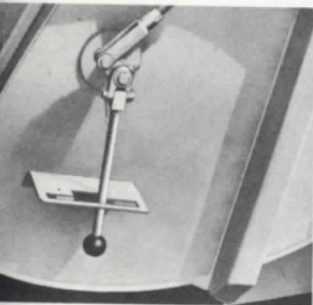
# LOW-COST Sanitary Refuse Collection

## 15 MAJOR IMPROVEMENTS

### BACKPACKING

or latch. All types of  
ding hopper into the  
ens ready for reload-  
next pick-up.

**CONTROL:** Just one,  
lever controls entire compact-  
easily operated.



**4. WIDER HOPPER MEANS FASTER LOADING:** Ample space for crew to load from either side simultaneously . . . no delays.

**HEIGHT REDUCES CREW FATIGUE:**  
and dump heavy refuse containers.  
pace all day long.

anding area, greater safety and  
pick-ups.

ct line of force exerted against  
r loads and fewer trips.

**RETAINING PANEL:** Positive  
between panel and hopper rim.

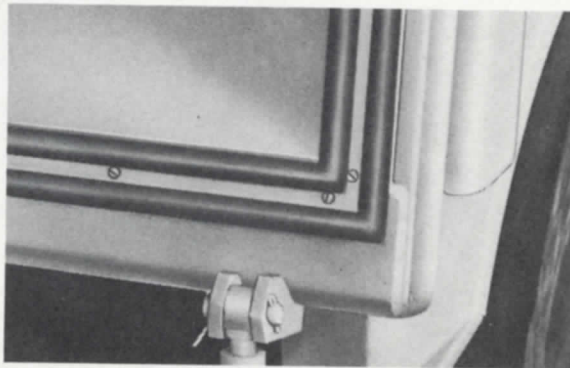
r separation and disposal of ex-  
acted into body.

Maximum operating efficiency at  
ments to an absolute minimum.

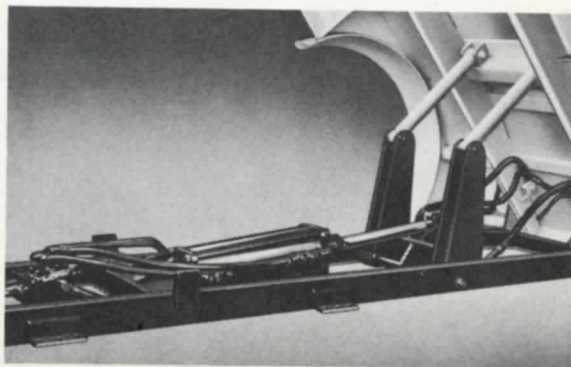
## Proved and Preferred By 2000 Communities...Now Even Better

Load Packer, long the most famous name in fully-enclosed, sanitary refuse collection units, now offers an even greater Load-Packer. Designed to incorporate the time-proved features that have reduced collection cost for approximately 2000 cities, the new Gar Wood Load-Packer offers 15 major improvements which add up to even faster collection schedules and lower operating costs. Gar Wood's engineering experience, manufacturing skill and pioneering leadership is the Load Packer guarantee of the most sanitary, low-cost refuse collection.

**11. STREAMLINED, MODERN DESIGN CREATES CIVIC PRIDE:** Load-Packers enhance city, make citizens sanitary conscious . . . help keep city clean.



**12. LEAK PROOF:** Double tubular seal prevents odorous fluids from dripping onto street.



**13. SIMPLIFIED INSTALLATION:** Hoist and body offered as "Packaged Unit." Reduces mounting time and costs . . . facilitates changing Load-Packer body from one chassis to another.

1 Larger Capacity

2 Fully Automatic

3 Finger Tip Control

4 Wider Hopper

5 Lower Loading Height

6 Safety Riding Step

7 Greater Compaction

8 Improved Retaining Panel

9 Optional Sump Tank

10 Improved Hydraulic System

11 Streamlined Modern Design

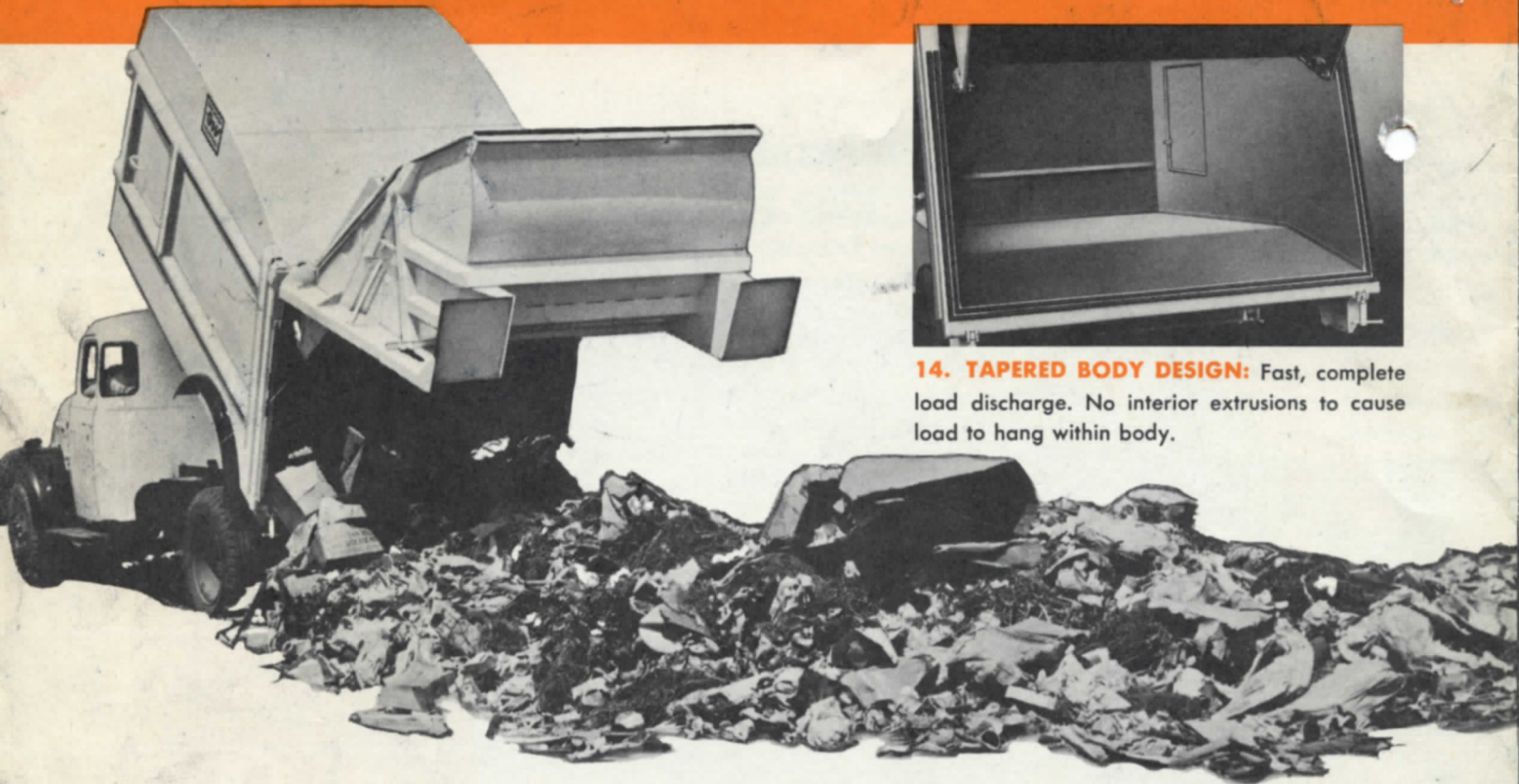
12 Leak Proof

13 Simplified Mounting

14 Tapered Body

15 Improved Dumping Hoist

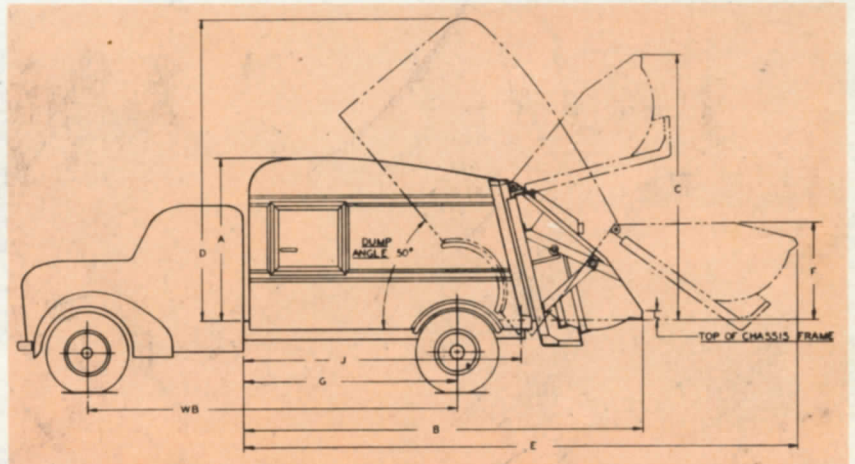
# NO TIME LOST AT THE DUMP!



**14. TAPERED BODY DESIGN:** Fast, complete load discharge. No interior extrusions to cause load to hang within body.

**15. IMPROVED DUMPING HOIST:** Insures adequate ability to dump heaviest loads and is designed for long trouble free operation.

**Load-Packer . . . the original Packing-Type Refuse Collection Unit . . . more popular today than ever before.**



## SPECIFICATIONS

RATED CAPACITY	A	B	C	D	E	F	G	OVERALL UNIT		J	*K	L
								WIDTH	WEIGHT			
10 CU. YDS.	76 <sup>5</sup> / <sub>8</sub>	169	153 <sup>3</sup> / <sub>8</sub>	141 <sup>1</sup> / <sub>8</sub>	245 <sup>1</sup> / <sub>8</sub>	69 <sup>3</sup> / <sub>8</sub>	84	95 <sup>1</sup> / <sub>2</sub>	7197	105	5760	1 <sup>1</sup> / <sub>2</sub>
13 CU. YDS.	77 <sup>7</sup> / <sub>8</sub>	192 <sup>5</sup> / <sub>8</sub>	153 <sup>7</sup> / <sub>8</sub>	154 <sup>1</sup> / <sub>8</sub>	264 <sup>1</sup> / <sub>4</sub>	69 <sup>3</sup> / <sub>8</sub>	102	95 <sup>1</sup> / <sub>2</sub>	7410	123	5938	1 <sup>1</sup> / <sub>2</sub>
16 CU. YDS.	84 <sup>1</sup> / <sub>8</sub>	200	153 <sup>1</sup> / <sub>2</sub>	153 <sup>7</sup> / <sub>8</sub>	275 <sup>7</sup> / <sub>8</sub>	69 <sup>3</sup> / <sub>8</sub>	102	95 <sup>1</sup> / <sub>2</sub>	7923	134	6331	1 <sup>3</sup> / <sub>16</sub>

GENERAL NOTE — Unit weight includes body, hoist, subframe and drive.  
\*K = weight of body and tailgate only. (All weights estimated.)

Specifications subject to change without notice

**GAR WOOD INDUSTRIES, INC.**  
Wayne Division, Wayne, Michigan

