

LOAD- PACKER 600

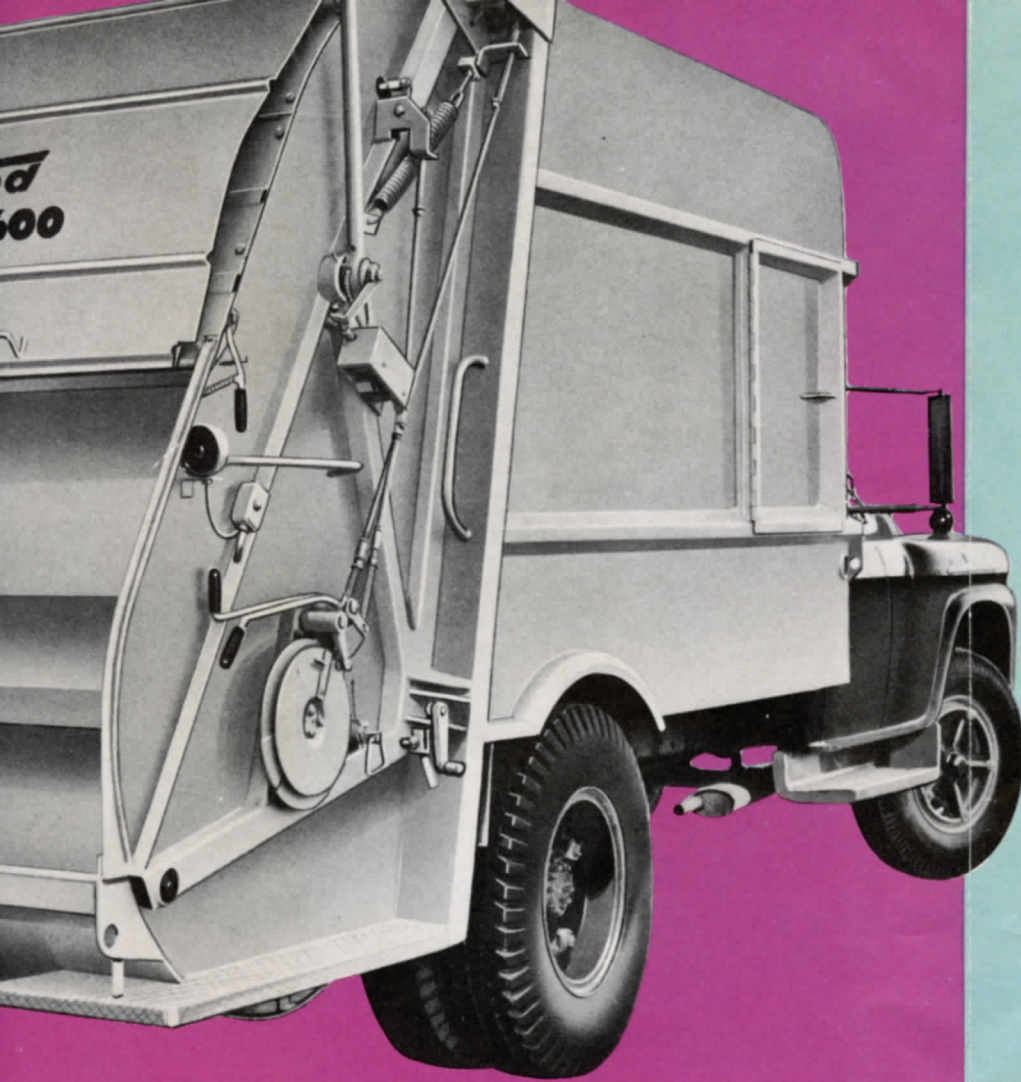
NEWEST: THE ULTIMATE!

ONLY FROM GAR WOOD:

BIG SIX

PERFORMANCE

1. FASTEST OPERATION
2. GREATEST COMPACTION
3. BIGGEST LEGAL PAYLOADS
4. LARGEST, LOWEST HOPPER
5. SAFEST, MOST DEPENDABLE
6. GREATEST ECONOMY



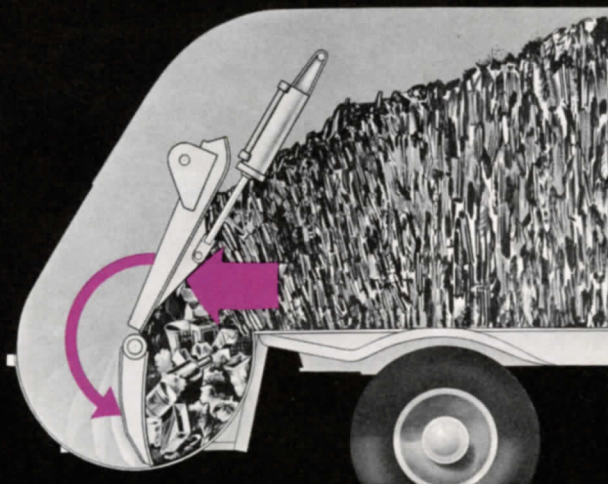
BIG SIX

your new standard

Now, for the first time, one refuse collection Body that excels in all the prerequisites of performance. It is, of course, from Gar Wood, originators of modern, sanitary refuse collection. Its name, naturally, the LOAD-PACKER, the first, most famous name in packer bodies. Here's BIG SIX performance; the ultimate in refuse collection efficiency. Ask your Gar Wood Dealer about the LOAD-PACKER 600 . . . the refuse collection Body that's first in everything that counts . . . the only Packer that gives BIG SIX performance.

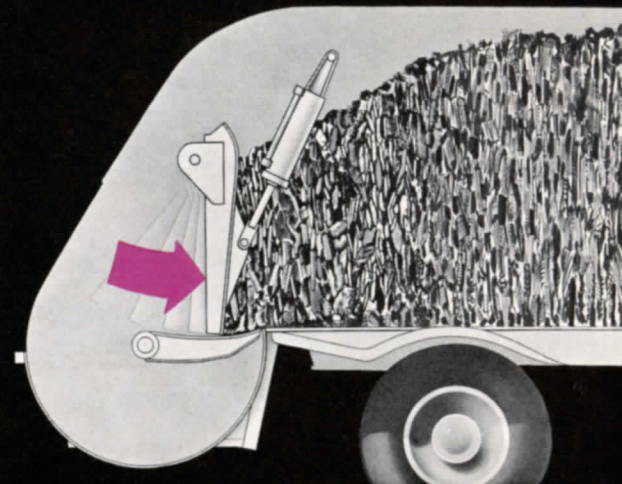
THE LOAD PACKER 600

OOD:
SIX



1. FASTEST OPERATION

Crew starts reloading in just 4 seconds . . . full cycle takes only 10 seconds. That's four times faster than the second most popular packer . . . almost three times as fast as the third. Speed means better service .



2. GREATEST COMPACTION

Packs more than any competitive body by actual tests. Rotary panel sweeps refuse to floor level . . . packing panel makes powerful direct thrust against load. Piston rods are hardened, chrome plated.

3. BIGGEST LEGAL PAYLOAD

Biggest loads on any given chassis. Two reasons . . . First: Gar Wood engineers cut dead weight to a minimum. Second: exclusive new feature results in unexcelled weight distribution. Revolutionary chassis-mount telescopic hoist eliminates heavy, conventional hoist sub-frames. Dual purpose packing cylinders keep tailgate weight down. With the 600 you carry more, yet stay within road limits.

5. SAFEST, MOST DEPENDABLE

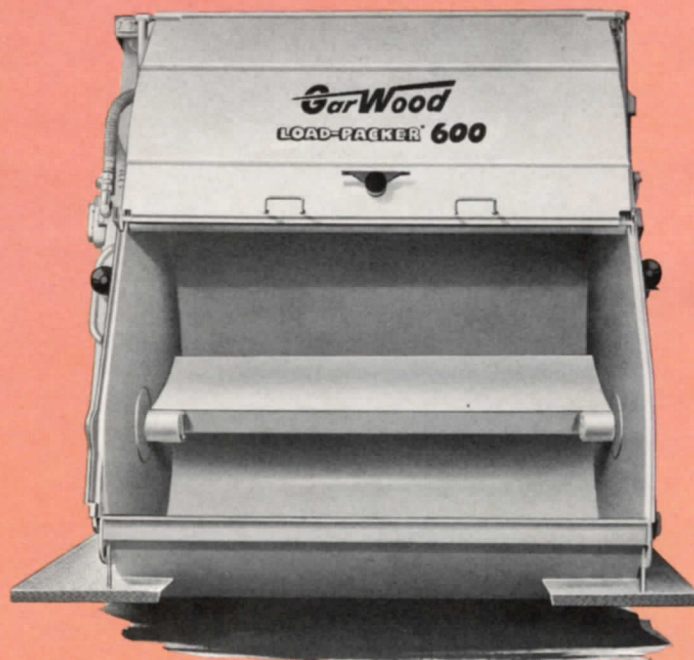
Controls are simple, foolproof . . . operator has positive control . . . can stop mechanism instantly. And, the 600 is built to last . . . Engineered for less maintenance. There are fewer moving parts to go wrong. It's tops for crews and public works management alike.

6. GREATEST ECONOMY

Big hopper cuts down packing cycles . . . moreover, the 10 second packing speed means the engine runs at accelerated, solenoid speeds as much as 30% less than other packers. This, of course, means less fuel consumption . . . less wear and tear on packer, chassis and engine.

4. LARGEST, LOWEST HOPPER

Big 1½ yard, 74 inch wide hopper, plus low loading height speeds collection, makes crew's job easier. Three men work side-by-side . . . there's no overhead restrictions . . . crew handles biggest refuse easily. And the biggest hopper means fewer packing cycles.



LOAD PACKER: THE ULTIMATE *plus...*

The BIG SIX is but a part of the 600 story. Here are still more of the many reasons why it's a must to get the complete facts from your Gar Wood distributor:

- Simplified Design . . . fewer moving parts, less linkage, fewer adjustments. All parts easily accessible.
- Non-Selective loading . . . no delays to crush big objects . . . assures complete service.
- Hydraulic system operates at lower pressures for less strain on hydraulic system.
- Exclusive dual volume pump reduces strain of drive line by 33%.
- A body size for every operation . . . *10, 13, 16, 18 and 20 yard capacities.
- Unmatched distributor service . . . the world's top truck equipment specialists sell and service your Load-Packers. Prompt parts delivery . . . factory trained service personnel.

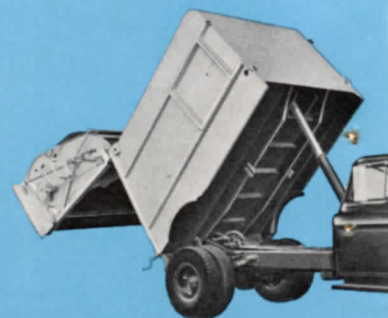
HYDRAULIC CONTAINER EMPTIED IN 15 SECONDS

Yes, your containers will operate with the 600's exclusive hydraulic Load-Lift. And Gar Wood's popular Roll-away, Pax-all containers can cut costs and improve sanitation on your commercial route. For the complete Gar Wood container story, see Bulletin W-211A.



GREATER STABILITY . . . LESS WEIGHT

Gar Wood, inventors of the telescopic hoist, now offer a dumping mechanism that combines fast, positive cleanout and maximum stability, with less weight and better weight distribution. Ball and socket mounting ends side load stresses. This advanced, job proved hoist from the world's leader in dump truck equipment can be counted on for long, trouble-free operation.



*10 yd. model—1 yd., 58 in. wide hopper.

LOAD-PACKER®

600

a product of



Richmond, California

Wayne, Michigan

BIG SIX STORY

Get the complete 600 story . . . ask your Gar Wood distributor to see the colorful, sound film presentation, "The BIG-6 Story."