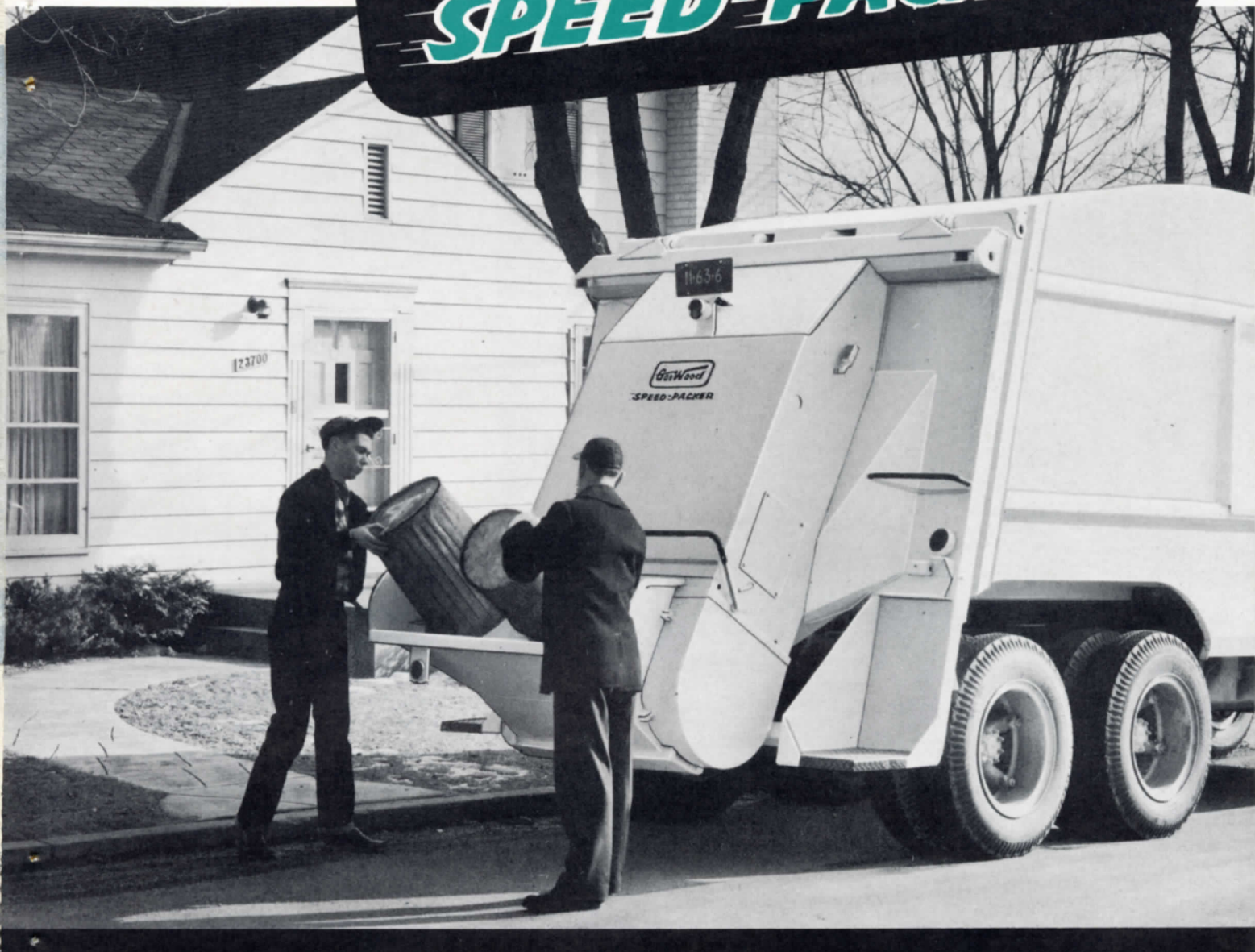


Introducing

The GAR WOOD

SPEED-PACKER



For the

first time

a continuous
loader that

... crushes and shreds refuse

... really compacts the load

... eliminates selective loading

... keeps maintenance costs low

... combines speed with safety

GREATER PAY LOADS PER CUBIC YARD OF CAPACITY

CRUSHING **plus** PACKING



A Gar Wood **SPEED-PACKER**

There's a new high in refuse collection service in store for you with the Gar Wood Speed-Packer. This outstanding unit is designed to *crush* and *pack* all kinds of refuse . . . handle *far bigger pay loads* than have ever been considered possible!

Because refuse is crushed before it is packed, the Speed-Packer handles maximum loads every time. Greater compaction means fewer trips to the dump and the ability to maintain far more efficient collection schedules.

The Gar Wood Speed-Packer was designed and built by the company that pioneered packing-type refuse collection units. The experience

Non-selective loading

The only continuous loader that loads, crushes and compacts almost any material



of refuse



Exclusive

gained in building Load-Packers for more than 2600 municipalities is your assurance of the quality and performance now reflected in the Speed-Packer.

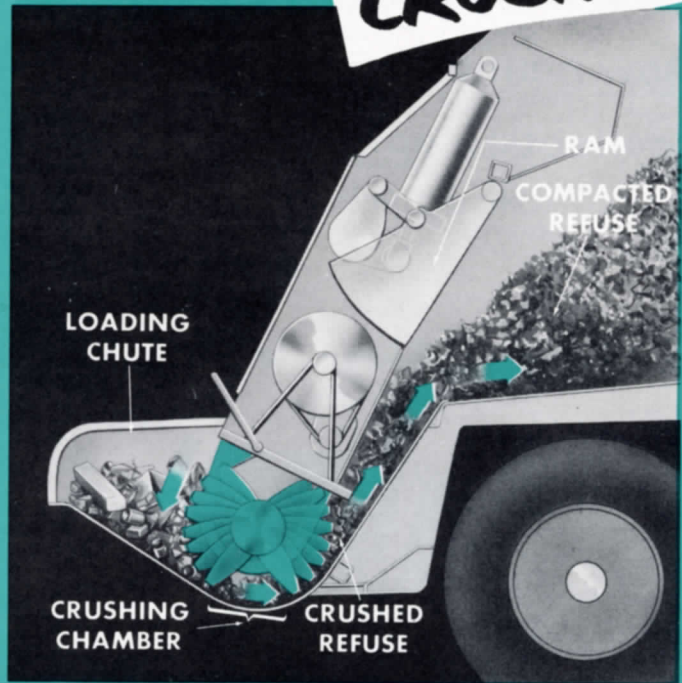
But that's not all! The continuous loading Speed-Packer has a long list of advantages over other continuous-type refuse collectors. It handles almost any material . . . there's less maintenance . . . it's convenient and safe to operate. And there's a choice of either 16 or 20 cu. yd. models.

Add it all up. For far bigger pay loads . . . for better, more economical refuse collection . . . the Gar Wood Speed-Packer tops them all!

Unlike escalator-type collection units, the Speed-Packer is a non-selective loader. It loads, crushes and compacts almost any material . . . wooden crates, tin cans, bottles, discarded metal toys, automotive tires, building materials such as bricks or cinder blocks, lumber of all sizes and shapes, tree limbs and heavy brush . . . even those extra long branches . . . anything the Speed-Packer can get its "teeth" into. Materials disappear just as fast as two men can fill the low, wide loading chute. There's no waiting, no delay. Collection crews can maintain a faster pace.

First it

CRUSHES

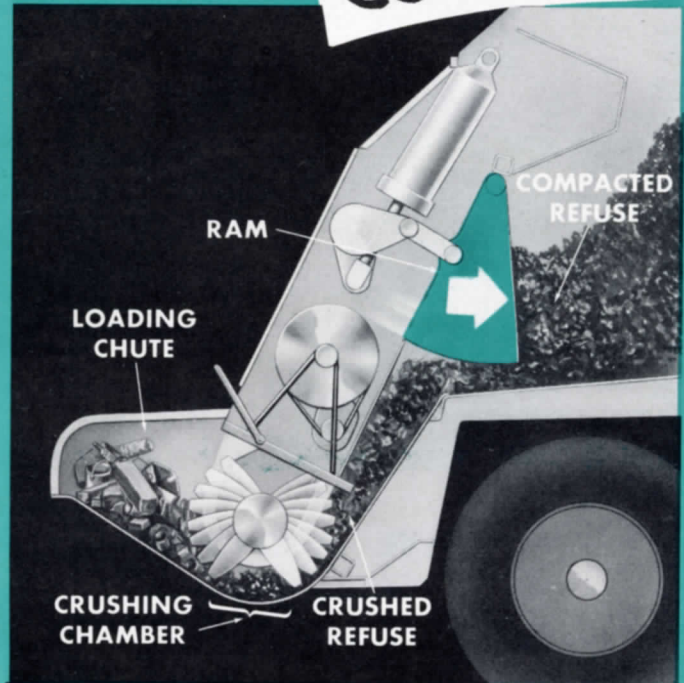


POWERFUL CRUSHING FORCE

reduces refuse, eliminates voids by shredding and crushing, makes the load easier to compact. 46 heavy duty crushing teeth exert plenty of force to handle almost any material with ease.

...then

COMPACTS



DIRECT PACKING ACTION

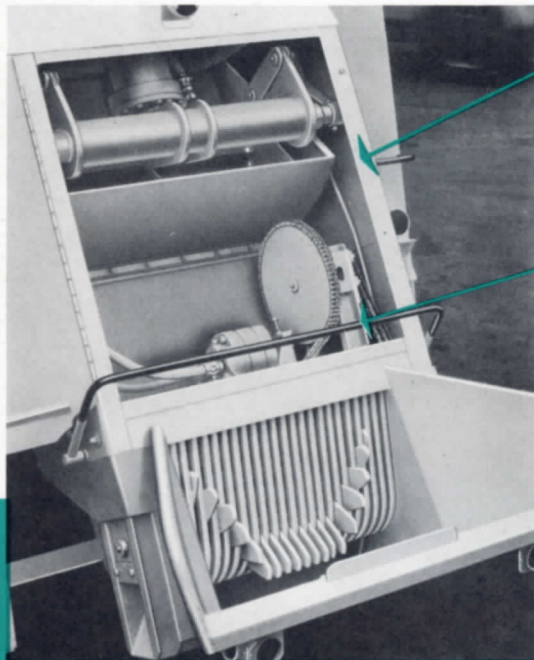
compacts refuse after crushing teeth have distributed material across full width of Speed-Packer body. Packing ram is low where it compacts entire load with a forward action for bigger pay loads.

You'll benefit from

- ... low maintenance costs
- ... collection speed
- combined with safety



... in the Gar Wood **SPEED-PACKER**



A new low in MAINTENANCE

Simplified design and rugged construction mean extra long life. Replacement parts cost less . . . all drive units are completely enclosed and protected . . . there's no contact with refuse or exposure to the weather.

A new high in SAFETY

Collection crews work in greater safety. Powerful crushing takes place deep down in the hopper for maximum crew protection . . . eliminates possibility of crushed materials flying back. And just a slight touch on this safety control bar stops or reverses teeth instantly.

plus many more outstanding performance features

- Short wheel-base requirements for maximum maneuverability
- Dependable, long-life hydraulic system for better operation
- Large safety riding steps reduce crew fatigue
- Fully enclosed for leakproof, odorproof collection
- Simplified installation reduces cost of chassis changes
- Nation-wide parts and service through Gar Wood-St. Paul distributors

Specifications

MODEL	RATED CAPACITY	CA DIMENSION—Single Axle	CA DIMENSION—Tandem Axle
SP-416	16 cu. yds.	102"	102"
SP-420	20 cu. yds.	135"	131"

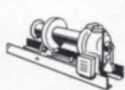
GAR WOOD INDUSTRIES, INC.

Wayne, Michigan • Richmond, California

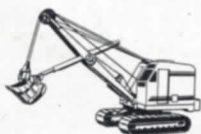
Plants in Wayne and Ypsilanti, Mich.; Findlay, Ohio; Mattoon, Ill.; Richmond, Calif.



Gar Wood Truck Cranes



Gar Wood Winches



Gar Wood Excavators



Gar Wood-Buckeye Ditchers



Gar Wood Load-Packers



Gar Wood-Buckeye Spreaders



Gar Wood—St. Paul Hoists & Bodies