

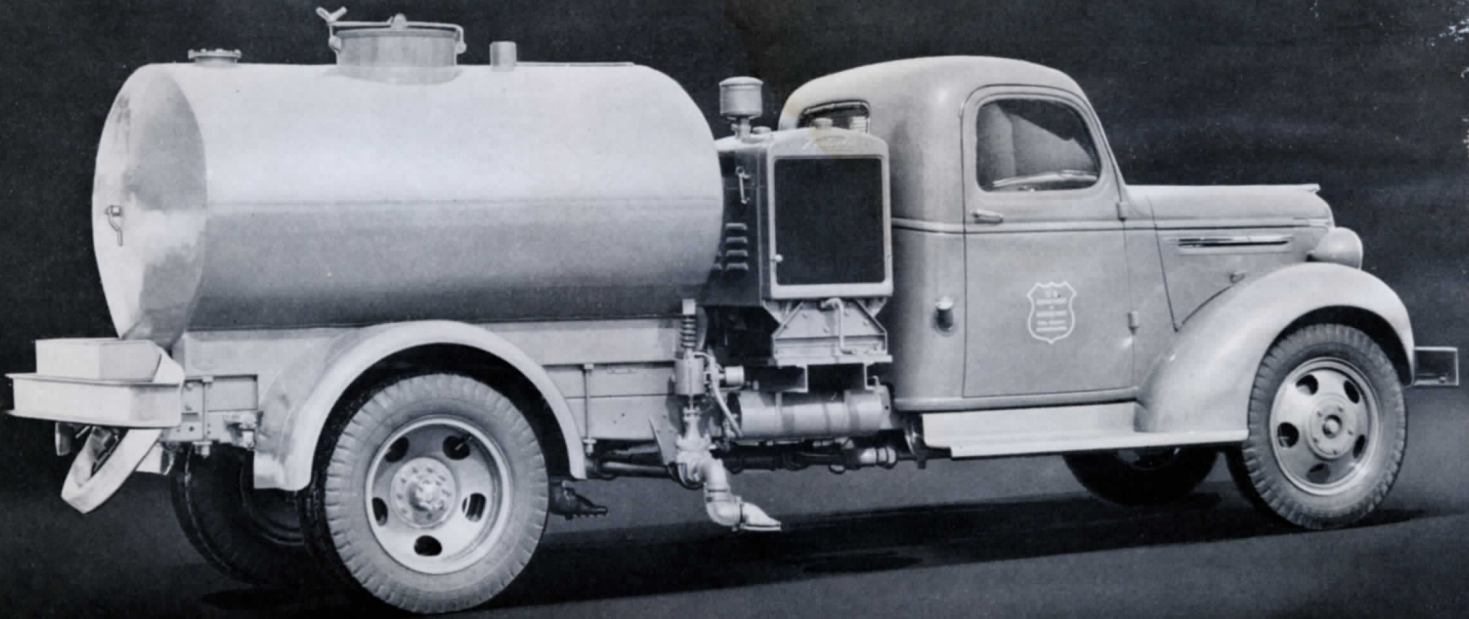


Above: 3500 Gallon
capacity Heil Stream-
line Flusher Tank.

HEIL

STREET FLUSHERS *and* SPRINKLERS

BULLETIN No. TT 639



800 gallon Heil Street Flusher. Also see Illustration No. 2 below.

CLEANER STREETS AT LO

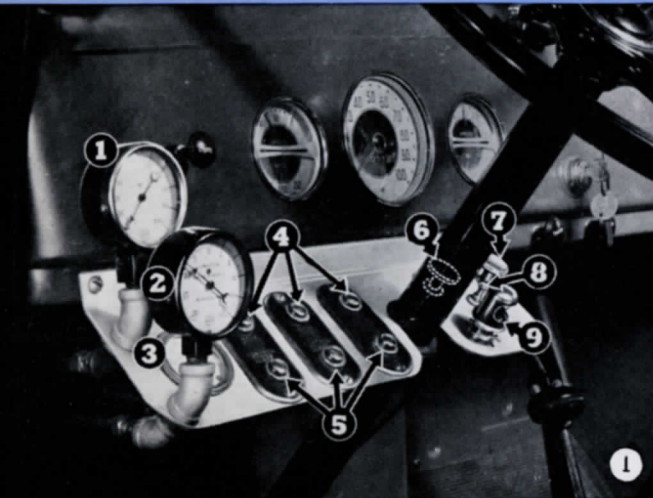
HEIL Quality-Built Street Flushers are produced by the same experienced manufacturing organization that since 1901 has led the field in the fabrication of transportation tanks of all types for all kinds of service. Heil street flushers are carefully engineered and ruggedly built for long life and satisfactory service. Each unit consists of an all-welded tank of the proper capacity and shape to fit the chassis, a gasoline engine driven pump which builds up water pressure for flushing, specially designed nozzles, and cab controls.

Heil Flushers are built in two standard models.* The model FOUR has a 450 G.P.M. pump operated by a four cylinder engine; The Model SIX has a 625 G.P.M. pump operated by a six cylinder engine. Either of these models can be equipped with one, two, three or four brass flusher nozzles depending on the effective cleaning area desired. For general service, the three-nozzle flusher is recommended.

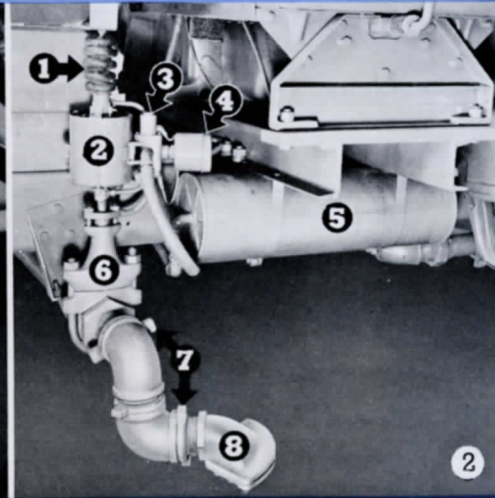
*Heil flushers also can be furnished in a variety of streamline styles. Ask for special quotation covering streamline design.



1800 gallon combination Heil flusher and sprinkler.



Cab control panel. (1) Water pressure gauge (2) Vacuum or air gauge (3) Ammeter (4) Buttons to open nozzles (5) Buttons to close nozzles (6) Throttle (7) Choke (8) Starter Button (9) "Empty" indicator light.



Vacuum control system. (1) Bellows seal (2) Vacuum cylinder (3) Solenoid valve (4) Air Cleaner (5) Vacuum Tank (6) Gate Valve (7) Adjusting lock nuts (8) Flusher nozzle.



ONE NOZZLE CLEANS 16 FT.

TWO NOZZLES CLEAN 28 FT.

THREE NOZZLES CLEAN 40 FT.

Diagram illustrating the effective cleaning area of Heil flusher nozzles. The water is ejected under pressure from the nozzles as indicated above. The pressure of the water jet cleans the pavement. Heil Flushers can



1800 gallon Heil Street Flusher. Unit has 625 GPM centrifugal pump, three flushing nozzles and two sprinkling nozzles.

LOWER COSTS WITH HEIL STREET FLUSHER UNITS

Specifications

TANK: Standard or Streamline design, elliptical or rectangular in shape (elliptical recommended). Capacities from 500 to 3500 gallons. Fabricated of mild steel, hi-tensile steel, or aluminum. All-welded construction. Heads are hot pressed, flanged and deep-dished for strength. Manhole is 18" in diameter and fitted with hinged, removable cover. Fill pipe connection is at bottom of tank with fill pipe running to top inside the tank. Incoming water passes through vertical rust-proof, cylindrical strainer which can be removed through capped opening at top of tank and cleaned through brass cleanout at bottom of tank. Tank is equipped with overflow pipe. Number of surge plates furnished depends on tank length and cross-section. Flanged outlet in bottom of tank is fitted with brass cleanout plug. Inside of tank is thoroughly cleaned and painted with rust resisting paint. Outside of tank painted prime coat. (Finish paint job and lettering at extra cost.) Rolled edge steel fenders cover rear truck wheels.

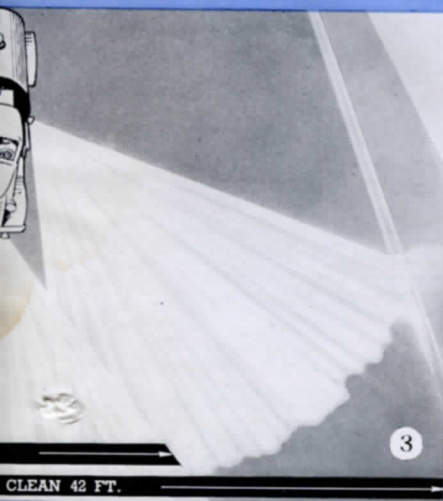
SUBFRAME: Efficient Heil subframe construction insures minimum weight by eliminating cross-bolsters and tie bands;

also improves appearance by providing a smooth external tank surface and by eliminating unsightly gaps between the tank and truck frame.

ENGINE: Model FOUR Engine: Waukesha XAHU, 4 cylinder, 3 $\frac{5}{8}$ " bore, 4 $\frac{1}{2}$ " stroke, displacement 186 cubic inches, 33 B.H.P. at 1800 RPM. Model SIX Engine: Waukesha 6BLU, 6 cylinder, 3 $\frac{1}{2}$ " bore, 4 $\frac{1}{4}$ " stroke, displacement 245 cubic inches, 50 B.H.P. at 1800 RPM. Full pressure lubrication. Radiator cooling system with water pump and fan. Magneto ignition with impulse coupling. Carburetor with air filter. 6 or 12 volt starter operated from truck battery. Ignition switch; governor; oil pressure gauge; gasoline tank; muffler; crank; Complete engine assembly is protected by a steel housing fitted with removable side panels.

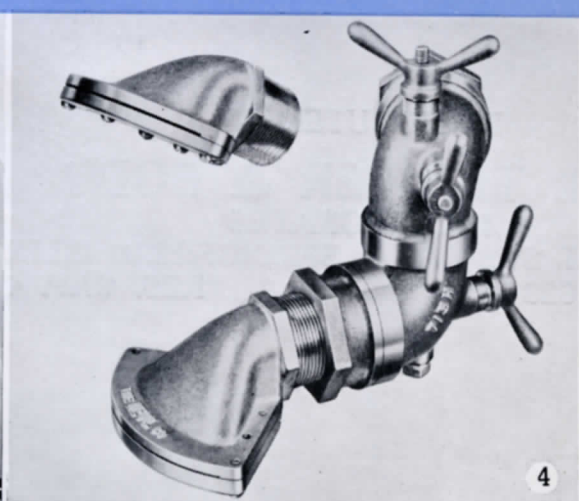
Note: Other makes of engines can be furnished if desired.

NOZZLES: Special Heil design. Made of rustproof brass, in two pieces, split horizontally. Machined and fitted with brass lock nuts for holding nozzles in any desired position (See Illustration 2). Elbows with special hand adjustment fittings (See Illustration 4) can be furnished at additional cost.



CLEAN 42 FT.

aning area of one, two and three
er pressure through specially designed
rating force of the spray thoroughly
also be equipped with four nozzles.



Two views of Heil Flusher nozzles. Illustration above shows scientifically designed, two-piece brass flusher nozzle. Illustration below shows triple action swing joint elbow which can be adjusted without tools.



Streamline Flusher tank with pump mounted inside rear housing. Flusher pump is driven by truck motor through specially designed transmission and power-take-off hook-up.

SPECIFICATIONS HEIL *Quality-Built* STREET FLUSHERS

PUMP: Model FOUR Pump: 450 GPM pump with 3½" suction and 3" discharge. Model SIX Pump: 625 GPM pump with 4" suction and 3½" discharge. Pump has pressure capacity up to 125 pounds (Average flushing pressure is 50 to 55 pounds). Single stage centrifugal pump, vertically split, cast iron case. Enclosed bronze impeller. Impeller is double keyed and locked to shaft. Ball-bearing end thrust bearing. Ball bearings and wearing rings. All bearings are lubricated by automatic grease cups. Flexible coupling connects pump to engine.

CONTROLS: Self starter, choke and throttle for flusher engine, and operating controls for nozzles are located in cab. Three types of nozzle control systems are offered:

- (a) Manual control using rods and levers. Operating levers are located in the cab, convenient to operator.
- (b) Vacuum control (Illustration 2) using a vacuum cylinder operated off the intake manifold of the truck engine.
- (c) Westinghouse air control using air pressure principle similar to air brakes on a truck or trailer.

Cab controls for vacuum or air control systems are mounted on a panel in cab as shown in Illustration 1. Manual or vacuum

control systems are optional at the base price. Air control systems are available at extra cost.

GAUGES: Float gauge on tank indicates when tank is nearly full. Warning light in cab indicates when tank is nearly empty. Gauge on dash indicates pressure at which water is discharged.

MISCELLANEOUS: Tank is furnished with 15 feet of 2½ inch heavy-duty, rubber-lined-filling hose (Hydrant coupling to be furnished by customer). Auxiliary equipment for fire fighting and street sprinkling can be furnished.

● If desired, a Heil "TRAILERIZED" Tank can be furnished in place of a Conventional Trailer-Tank. "TRAILERIZED" is the Heil trade name for a frameless tank and running gear "All-In-One." Heil "TRAILERIZED" construction provides a lower center of gravity and accomplishes a remarkable saving in weight through the elimination of trailer frame, tank subframe and hold-down bands.

Every Heil Flusher Unit is custom-built to insure proper load distribution and provide low center of gravity. It is customary to furnish flusher tanks of a greater capacity than the rated truck overload because the load diminishes rapidly and the unit operates at slow speed on paved streets.

The following table lists the approximate weights and recommended cab-to-axle measurements for each capacity tank. Longer or shorter cab-to-axle trucks can be used, depending on special mounting conditions and truck capacities.

Capacity Gallons	STEEL		WEIGHTS (Flusher Unit Only)				RECOMMENDED CAB-TO-AXLE		Capacity Gallons	STEEL		WEIGHTS (Flusher Unit Only)				RECOMMENDED CAB-TO-AXLE	
	Shell	Heads	Standard Tank		DeLuxe Streamline		4-Wheel Chassis	6-Wheel Chassis		Shell	Heads	Standard Tank		DeLuxe Streamline		4-Wheel Chassis	6-Wheel Chassis
			Empty	Loaded	Empty	Loaded						Empty	Loaded	Empty	Loaded		
600	9/64"	3/16"	2100	7080	2500	7480	84"		1750	3/16"	1/4"	4580	19105	5155	19680	102"	108"
800	9/64"	3/16"	2350	8990	2750	9390	84"		2000	3/16"	1/4"	4790	21390	5415	22015	120"	108"
1000	3/16"	3/16"	3380	11680	3805	12105	84"		2250	3/16"	1/4"	5350	24025	6050	24725		126"
1250	3/16"	3/16"	3770	14145	4245	14620	102"		2500	3/16"	1/4"	5715	26465	6365	27115		126"
1500	3/16"	3/16"	4050	16500	4575	17025	102"		3000	3/16"	1/4"	6200	31100	7000	31900		126"

Specifications subject to change without notice.

DISTRIBUTED BY
CAPITOL TRAILER & BODY CO.
 INCORPORATED
 241 N. FIRST ST. SPRINGFIELD, ILLINOIS
 OFF. MAIN 623 RES. CAP. 4635

THE HEIL CO.

Street Flushing and Sprinkling Equipment—Transportation Tanks for Gasoline and Fuel Oil—Roto-Gear Pumps—Valves—Stainless Steel Tanks—Hydraulic Dump Units—Hydraulic



Milwaukee, Wis. — Hillside, N. J.

Scrapers—Bottle Washers—Pasteurizers—Dehydrators—Oil Heating and Air Conditioning Equipment—Individual Water Systems—Water Softeners—Free Literature sent on request.