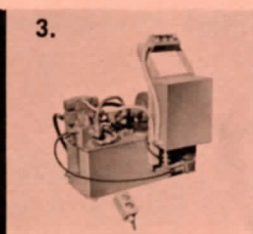
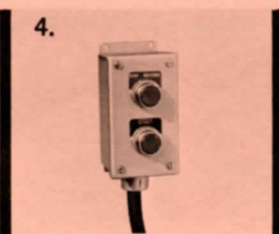
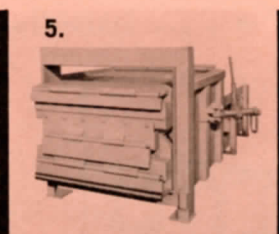
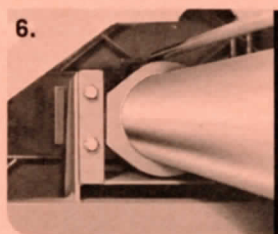
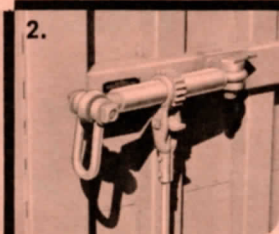
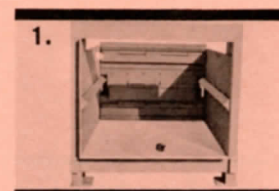
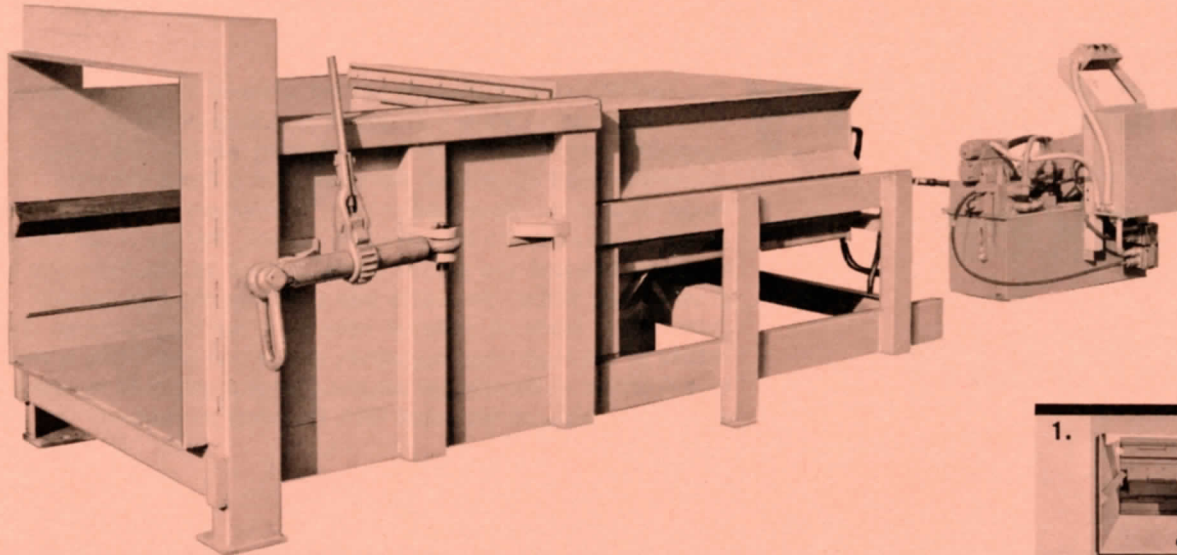


From **THE SOLID WASTE SYSTEMS PEOPLE**

HEIL HUGE-PAC

Model 0722A*



SPECIFICATIONS

Opening Size in Tailgate of Container	52 x 44 ³ / ₄
Electric Motor — H.P.	7 ¹ / ₂
Rated Size (cubic yards)	2.2
Capacity — Yds. per Hr., 80% Utilization	89
Cycle Time — Sec.	53
Charging Area, Inches	40 x 48
Max. Packing Force, Lbs.	60,000
Packer Plate Dim., Inches	31 ¹ / ₂ x 48
PSI on Packer Plate, Max.	39.8
Header Bar Height Above Packer Plate	6
No. of Cylinders	1
Cylinder Bore, Inches	6 ¹ / ₂
Cylinder Stroke, Inches	56 ¹ / ₂
Pump GPM @ 1000 PSI	9.2
Hyd. Tank Capacity (Gals.)	20
Max. Packing Press. PSI	1800
Overall Dimensions, Packer Frame Only	57 x 125
Weight, Lbs. (Shipping)	7000

*Model 0722A PACKER can be ordered with 10 H.P. motor to provide faster cycle time of 44 seconds.

1. Hinged metal cover plates keep waste out of sword area, assuring easy sword placement.
2. Quick connect ratchet turnbuckles make container hook-up easy, even in close quarters.
3. Self contained power unit with complete control station can be located away from packer.
4. Auxiliary remote control can be placed near container.
5. Packing blade rides on shimmed nylon guides to eliminate wedging. Note rubber wipers on rear header bar and bottom of packer plate.
6. Trunnion type ram cylinder mounting provides flex and reduces wear on cylinder rod.

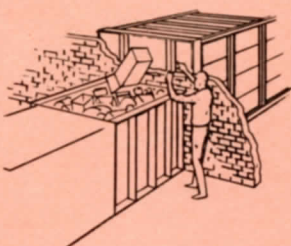
TRUCKWELD EQUIPMENT CO.
739-9th NORTH SEATTLE, WASH. 98109
PHONE AT 4-1172

HEIL HUGE-PAC[®]

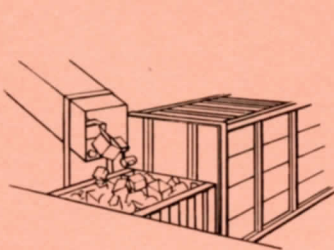
Stationary Packer System

The Heil Huge-Pac stationary system is made up of three basic units designed to solve your waste handling problems. The ruggedly constructed Huge-Pac stationary packer, the closed Hi-Tensile steel Huge-Haul container and a truck-mounted Huge-Haul or Uni-Haul mechanism. Almost any discarded material is easily handled with this efficient system. Refuse is fed into the charging box and the packer plate, pushed by the hydraulic ram, crushes and forces the waste into the Huge-Haul container. Subsequent loads of material exercise a packing force on the refuse in the Huge-Haul container, and refuse and waste is reduced to a fraction of its original volume. More material is handled with fewer trips at less cost with the least manpower.

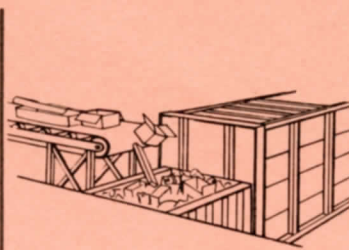
Install Heil HUGE-PAC anywhere . . . inside or out



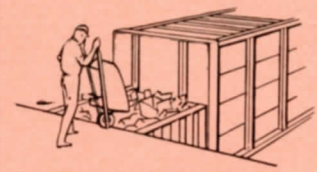
THROUGH THE
WALL



LOAD BY CHUTE

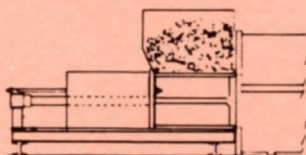


LOAD BY
CONVEYOR

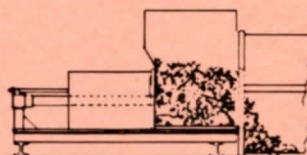


LOAD BY
HAND

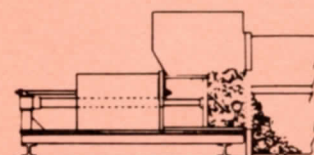
WORKS SIMPLY . . . FAST



1. Debris of any kind is placed in hopper. As the cycle starts the ram pulls the packing plate to the rear allowing refuse to drop into the chamber.



2. When the ram is fully contracted it begins a forward movement that easily pushes the refuse ahead. Neatly and quietly it forces material into the container.



3. Packing cycle completes its work and refuse is forced into the Huge-Haul container. More debris can be added and the cycle continued.

The company reserves the right under its product improvement policy to change construction or design details and furnish equipment when so altered without reference to illustrations or specifications used herein.



THE HEIL CO. MILWAUKEE, WISCONSIN 53201

FACTORIES: MILWAUKEE, WISCONSIN • LANCASTER, PENNSYLVANIA • WOODBRIDGE, NEW JERSEY
SALES OFFICES: ALBANY, N. Y.; WOODBRIDGE, NEW JERSEY; LANCASTER, PA.; ATLANTA, GA.;
CLEVELAND, OHIO; TOLEDO, OHIO; CHICAGO, ILL.; MILWAUKEE, WIS.; KANSAS CITY, MO.; ST. LOUIS, MO.;
DENVER, COLO.; DALLAS, TEXAS; LOS ANGELES, CALIF.; MODESTO, CALIF.; SEATTLE, WASH.; TORONTO,
ONTARIO, CANADA AND BRUSSELS, BELGIUM. DISTRIBUTORS IN ALL PRINCIPAL CITIES.

CABLE ADDRESS: HEILCO