



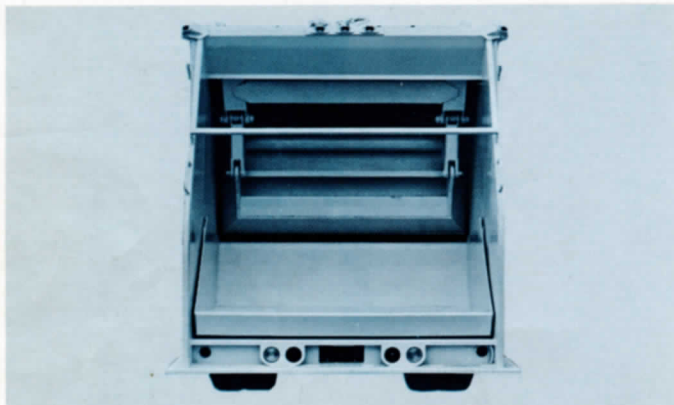
Safety and efficiency in a rugged combination

REAR LOADING PACKER BODIES

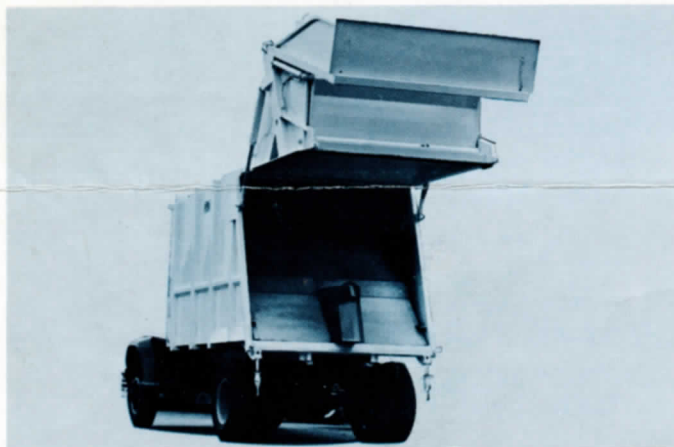
**HOBBS
PAK**



Low loading height of Hobbs-Pak rear loader means fewer lifting injuries, faster loading. Note girde construction which causes entire body to act as load-carrying tube.



Refuse may be loaded without selection because the tremendous force of the packing unit will compress virtually anything placed in the six-foot tall, seven-foot wide hopper. Note force-multiplying toggle linkage at side of hopper.



Safe, simple ejection cycle means greater dumping, faster turn-arounds. Entire rear packer section lifts clear, then ejection plate moves through storage compartment, ejecting refuse. Thirty-second cycle is controlled by two simple levers.

**All the advantages of rear loading—
plus exclusive Hobbs-Pak extras**

Low loading height of the Hobbs-Pak rear loader means less straining for pickup men, less time to unload, and fewer lifting injuries.

Safety of pickup men is increased, because loading is done completely out of the line of passing traffic. Rear riding step puts pickup men completely inside main body width.

Fast, efficient pickup operation is assured, even in narrow alleyways or other limited lateral access areas.

Enclosed packing cycle means less litter in loading and transport. Refuse is cleaned out of the loading hopper and packed into the main storage compartment, remaining completely enclosed until it is ejected at the disposal area or transfer station.

**Plus these "more for your money"
Hobbs-Pak features**

Girdle construction—Stout, rectangular-tube high-tensile steel girdles encircle the main body of the unit and act as stiffeners, so the entire body functions as a load-carrying tube. Body is available in 16-, 18-, 20-, and 25-cubic yard capacities.

Fast, efficient packing cycle—Packing cycle requires less than 22 seconds on all Hobbs-Pak rear loaders. And it's completely enclosed for safety and neatness. Simple, direct hydraulic system uses only one solenoid and two electrical relays. Packing efficiency is increased by a restrictor valve which provides back-pressure on the ejection plate during packing. This causes the packing cylinders to exert more pressure, breaking up refuse and packing it tighter.

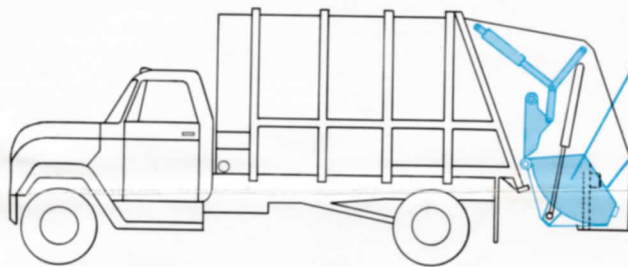
Force-multiplying toggle linkage—A unique toggle linkage multiplies force of two double-acting hydraulic cylinders to more than 83,000 pounds of pressure on the packer plate—a potential force other residential packers can't begin to match.

Self-aligning bearings — All pivot points in the Hobbs-Pak rear loading mechanism utilize heavy-duty self-aligning spherical bearings. These bearings save their own life, by compensating immediately for any deflection or mis-alignment of system components. Maintenance costs and downtime are drastically reduced.

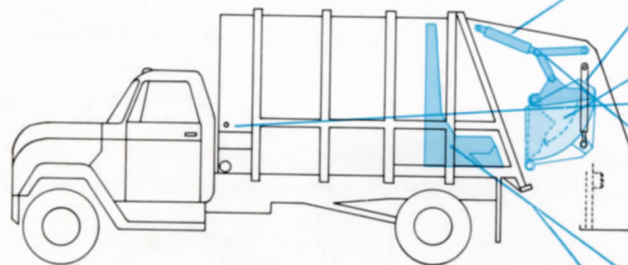
Safe, simple ejection system—For unloading, the entire rear packing mechanism lifts clear on two hydraulic cylinders. A full-width ejection plate then moves completely through the body, ejecting refuse. Ejection cycle is completed in 30 seconds or less, even on big-capacity bodies. Two simple levers control entire operation. A rugged seven-inch, four-stage hydraulic cylinder gives the ejection plate plenty of force to dislodge the most tightly-compressed loads.



Efficiency and economy — basic components of the Hobbs-Pak Rear Loader



1 Refuse of all types is loaded into rear hopper, WITHOUT SELECTION. Hopper is nearly six feet tall, seven feet wide, holds 1¾ cubic yards of refuse.



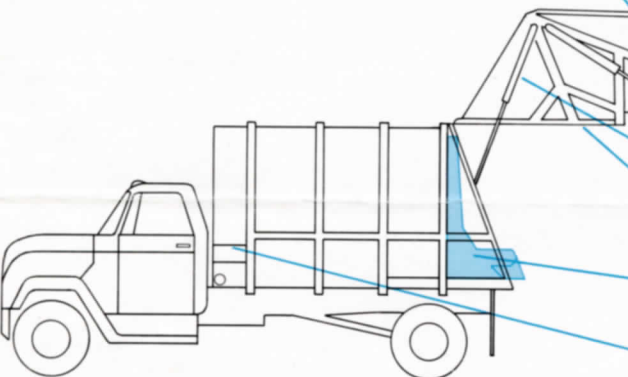
2 Packing cycle is actuated at control box on curb side of hopper (dual controls optional). Safety switch below indicator light stops cycle at any point. Pack button initiates cycle. Lower button on control box sounds buzzer in cab as driver signal. Manually operated dump valve bleeds off pressure to lower hopper in case of jamming.

3 Twin hydraulic cylinders protected from road dust, raise hopper to cover packing mechanism. Packer plate simultaneously retracts to packing position.

4 Packer plate descends, clearing hopper and packing refuse against face of ejection plate.

5 Restrictor valve holds back-pressure on ejection plate, causing packing cylinders to exert more force, breaking up load for tighter compaction.

6 Force-multiplying toggle linkage multiplies pressure of two double-acting hydraulic cylinders to more than 83,000 pounds on the packer plate.



7 Packer plate holds packed refuse in storage compartment. Loading hopper descends, ready for more refuse. Cycle time is less than 22 seconds.

8 Rear section latches are released in ten-second operation.

9 Lever actuates two side-mounted hydraulic cylinders which . . .

10 Lift entire rear packer section clear.

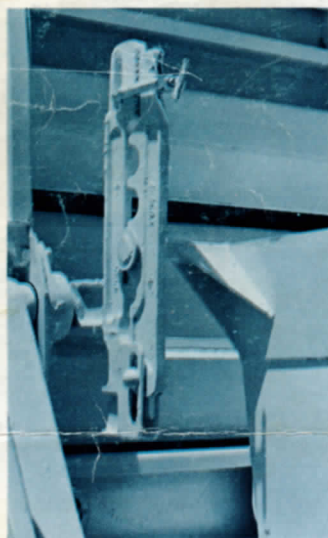
11 Lever actuates ejection cycle; ejection plate moves through body, expelling compacted refuse.

12 Levers move in opposite direction to retract packer plate, allow rear section to descend smoothly by gravity.

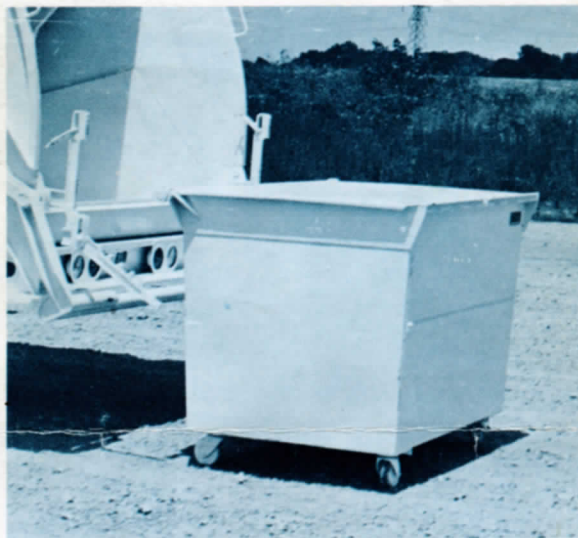




Automatic container system handles containers up to two cubic yards, and has 2,000 pound lifting capacity. Container system does not obstruct manual loading.



Notched pickup arm holds container firmly throughout cycle, reducing noise and container damage, even on unlevel terrain. T-bar lock and inter-locking teeth permit rapid individual height adjustments.



Hobbs-Pak container is available in 1- and 2-cubic yard capacities. Containers are 14-gauge steel with a single horizontal rib stamped into each side for extra strength and flex-resistance. Steel "universal" pick-up pins are welded to heavy steel reinforcing plates. Container rolls easily on four six-inch swivel casters. Continuous-hinge, two-piece lid opens automatically during dumping. Bottom drainplug is optional.

Hobbs-Pak Container System —quick, quiet and gentle

An automatic container dumping system is available as an option on the entire line of Hobbs-Pak rear loaders. The hydraulically-powered unit has a 2,000-pound lifting capacity, and can handle "universal lift-pin" equipped containers up to two-cubic yards.

A notched pickup arm (a Hobbs-Pak exclusive) allows the system to gently pick up, dump, and reset containers, even on unlevel ground. Because containers are held firmly throughout the cycle, there's no damaging drop as the container goes "over the top." This means longer container life, and quieter loading.

Twin double-acting hydraulic cylinders provide plenty of power to lift and dump loaded containers. Double-acting cylinders allow the containers to be set down quickly and quietly. A single lever controls the entire operation.

A lower lift bar also contacts the side of the container, to provide extra lifting force and serve as a pivot point when the container is dumped. This lift bar is made in two pieces, so the full width riding step can be retained.

The container system fits all Hobbs-Pak rear loaders, including those now in use, and works interchangeably with almost all sizes and major brands of refuse containers.

