



For maximum performance per dollar invested:

**TDSL SERIES
SIDE LOADING
PACKER BODIES**

**HOBBS
PAK**



Efficiency is engineered into the Hobbs-Pak Side Loader. Loading height is only 19" above truck frame. Automatic or manual controls are next to the loading compartment on both sides of body. Optional automatic doors cover loading compartment as cycle begins. Packing cycle takes just 15 seconds.



Economy stems from simple, functional design. Hydraulic dump cycle is quick, clean and simple. Hobbs-Pak Side Loader *unloads in the same direction it compresses*, and the compression plate can help dislodge the compressed load.



Versatility makes the Hobbs-Pak Side Loader the choice of cities large and small. Refuse can be loaded from either side, without selection. Minimum skill is required to load, operate and maintain the unit.

Efficiency, economy, versatility—Hobbs-Pak Side Loader trademarks

You get three yards more compressible capacity than in other packers of comparable weight and cost, because the 3-yard loading compartment is not figured in the stated capacity of a Hobbs-Pak. Thanks to this extra capacity, four Hobbs-Pak side loaders can handle the work of five competitively rated units—allowing you a 20 percent savings on original investment, personnel, maintenance, and insurance. Hobbs-Pak bodies are available in 13-, 16-, 20- and 24-cubic-yard capacities—all of it *compressible*.

Light but rugged—No need for outsize, expensive trucks with these bodies. The simple, lightweight mechanism allows the body to be installed on any standard-make chassis. Exceptional strength comes from heavy gauge, fully reinforced steel construction throughout.

High compression—Refuse is compressed by more than 39,000 pounds of hydraulic force. The packing cylinder is a modern-design unit, 5"-in diameter, operating at 2000 psi. This allows lighter unit weight, and a faster packing cycle (just 15 seconds, start to finish) than ever before.

Sanitary, watertight—Refuse cannot drip, fall or blow out of the completely enclosed, watertight body. Heavy duty gaskets around rear doors hold liquids up to nine inches deep in the body, even under pressure.

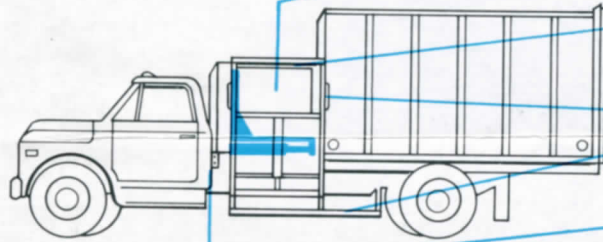
Simple, safe, easy loading—All types of refuse may be loaded into the Hobbs-Pak Side Loader **WITHOUT SELECTION**. Extra large openings on both sides are only 19" above chassis frame height, making it easy even for short men to stand on the ground and swing garbage containers from shoulder to hopper. Safety steps and handholds remove hazards, allowing men to ride inside main body width. Cutoff safety switches and automatic controls on both sides are easily accessible, enclosed in splashproof boxes. Packing cycle can be stopped and reversed instantly from either side of truck.

Fast, efficient service—Automatic compaction cycle is completed in 15 seconds, while crew picks up more refuse. Route time is thus greatly reduced.

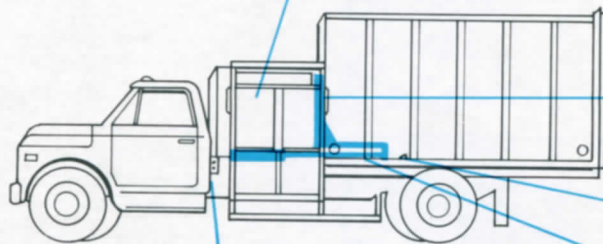


TDSL SERIES

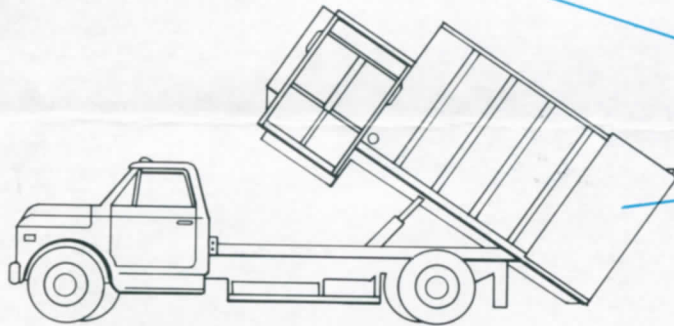
Safety and simplicity are engineered into the Hobbs-Pak Side Loader



LOAD



COMPRESS

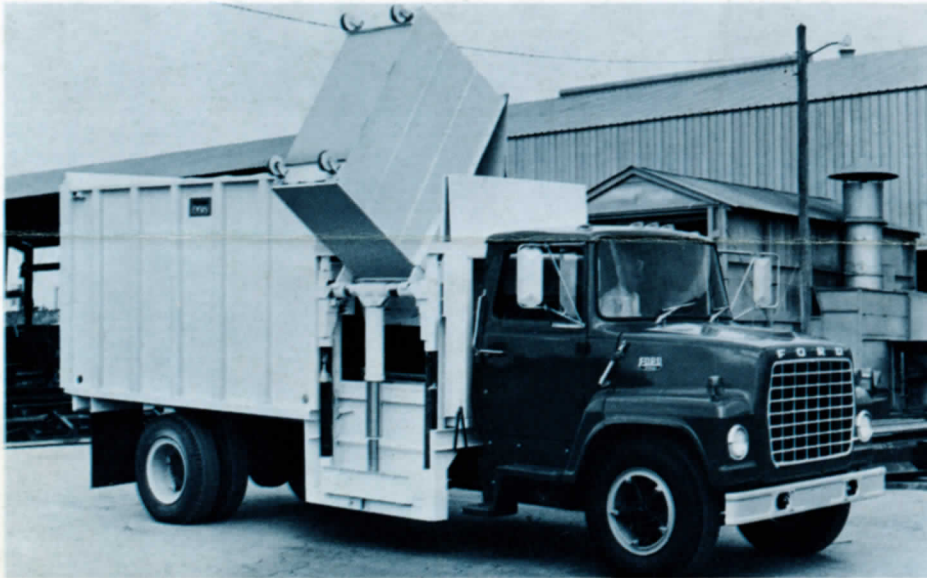


DUMP

- 1 Refuse of all types is loaded into compartment at front, WITHOUT SELECTION. Extra large openings on each side, plus—
- 2 Hinged doors in the compartment roof facilitate loading and emptying of large receptacles by two or more men simultaneously.
- 3 Convenient handholds and non-slip safety tread steps are provided for workers.
- 4 Compression cycle is started by convenient push-button controls on each side of cab. Main valve is equipped with integral pressure control.
- 5 Vertical sliding doors are manually operated. Automatic doors optional. Doors cover side openings during compaction cycle.
- 6 Hydraulic action moves compressor plate back through loading compartment, pushing and compressing refuse into main storage compartment.
- 7 Retaining angles hold load in place as compressor plate returns for reloading—in only 15 seconds!
- 8 Moving parts above floor are completely enclosed to prevent fouling by refuse, either in loading or unloading.
- 9 Safety switches directly below actuating controls permit stopping and restarting of compressor plate at any point.
- 10 Load is dumped by opening the two rear doors—which swing flat to the body sides—and tilting the body smoothly and quickly to the proper dumping angle with single-acting twin hydraulic cylinders.

TDSL SERIES





Hobbs-Pak Container Systems—safe, simple, economical

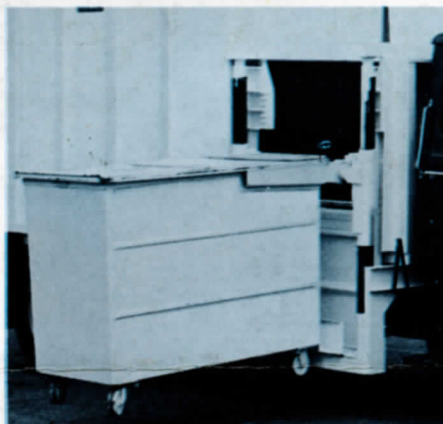
Two sizes of container dumping systems are accessories for the Hobbs-Pak Side Loader. These systems center around a vertical hydraulic cylinder which lifts containers and upends them via patented rack and sector gears, then returns them to ground or dock levels in 20 seconds or less.

For safety and economy, the lift mechanism is powered by the same hydraulic power that pushes the compressor plate in the main body. This provides automatic coordination of dump and compression cycles. The entire pickup and dump cycle is controlled by one lever, which also accelerates the truck engine.

A Hobbs-Pak Side Loader equipped with any of the Hobbs-Pak container loading systems can still be loaded manually, making this a natural combination for routes where pick-up methods vary.



1 1/4 cubic-yard container is ideal for use in office buildings, hotels, etc. because it rolls through any normal door opening. Hard-rubber-tired wheels on ball-bearing swivel casters will not mar linoleum, hardwood, vinyl, concrete or ceramic floors.



2 cubic-yard container is designed for bulky, lightweight refuse. Lifting mechanism accommodates 1600 pounds. Rubber-tired wheels are safe for any floor. Hinged-in-the-middle container cover forms chute into loading compartment when dumping 1 1/4- and 2-cubic-yard models.

TDSL SERIES

