



jaeger
phoenix

jaeger
CANADA
phoenix

PUSH
TO
STOP

when seconds count ...

2M Series *Slim, Powerful, Manoeuvrable,
1,200 lbs. per cubic yard compaction density.*

Three sizes: 10,
13, 17 cubic yards



Only 80" outside width, the Phoenix 2M Series uses a powerful hydraulic system. Refuse is given very high compression. The slim, compact body eases vehicles into previously inaccessible locations. Payloads equal much larger compactors. Features fast cycle, 2 cu. yd. hopper, 72" loading width. Automatic tailgate unlock, hopper-up sweep cycle, and fast, clean ejection for quick discharge. Engineered construction for strength and weight-saving.

Phoenix PH *Fast Loading, Big Appetite, Quick Discharge,
1,000 lbs. per cubic yard compaction density.*

Four sizes: 20, 24,
30, 36 cubic yards



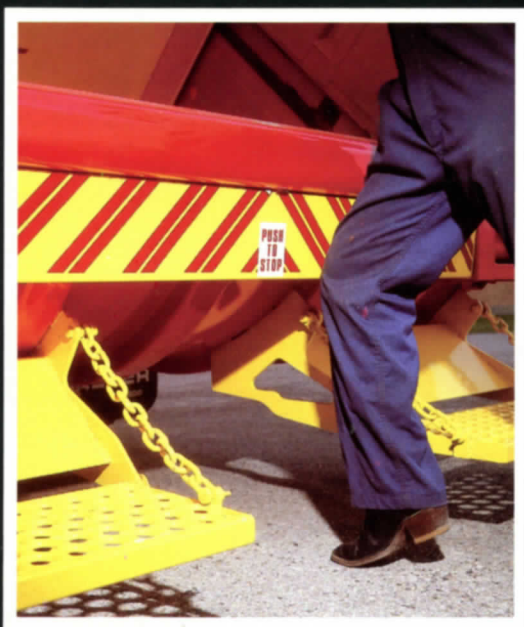
Phoenix "PH" high compaction, rear loading refuse compactors. A world proven, new generation compactor with exceptional performance, reliability and durability. Full 8' wide body, 3 cu. yd. hopper, 84" clear loading width. Fast cycle, only seconds delay to reload. Big capacity, high compaction to handle the longest routes. Exclusive, foolproof, automatic tailgate unlocking. Fast, self clearing ejection barrier operation and unique "in the air" sweep of hopper for rapid turnaround.

These exclusive features demonstrate

CAB CONTROLS



DISCHARGE CONTROL STATION



GREATER OPERATOR PROTECTION



RELIABILITY

CAB CONTROLS

Convenient in-the-cab master control station; three position OFF-LOAD-DISCHARGE switch controls operational mode. Auxiliary switches for lights, beacons. Also contains signal buzzer.

GREATER OPERATOR PROTECTION

Exclusive knee operated emergency pack cycle stop. Packing mechanism operates far away from opening. Cycle has ANSI Z245.1 pinch point stop. Rubber shield on sweep blade contains shrapnel from compacting refuse.

DISCHARGE CONTROL STATION

All controls grouped for operator convenience. Every hydraulic circuit pressure and function can be checked and adjusted from this station using quick connect pressure gauges.

RELIABILITY

Body, hopper, sweep and pack blades and ejection barrier are tough, specially engineered continuously welded deep section steel assemblies stressed to absorb continuous heavy duty service. High tensile, abrasion resistant steels are

employed in wear prone areas. Body panels, floor, or structure will not bend out of shape in service.

VERSATILITY

Move from manual loading, to any size residential refuse carts, to round or square bins and even seven ton rear loading containers. A variety of operationally proven mechanisms can be furnished to meet any requirement. Lifting apparatus for carts and small bins can be integrated with standard hydraulics and control functions. Rear loading container apparatus includes

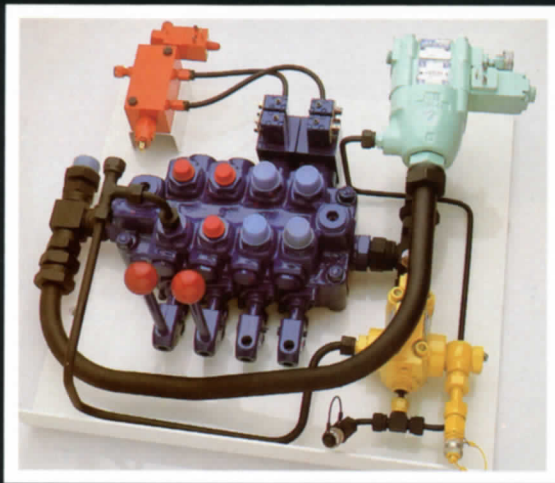
The Phoenix makes no compromises and is outstanding in every aspect; safe to
Jaeger Canada Equipment Ltd. continues a thirty year tradition of bu

Demonstrate *phoenix* superiority!

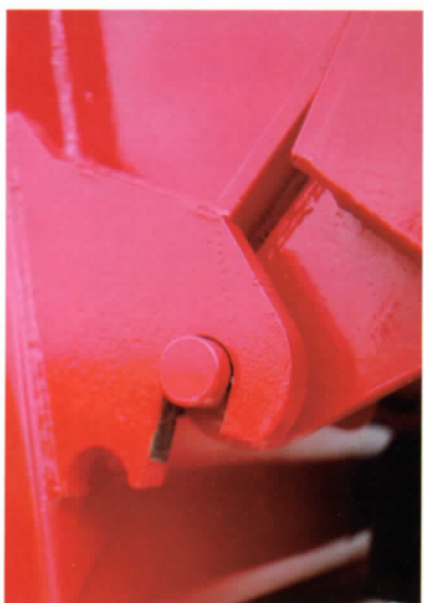
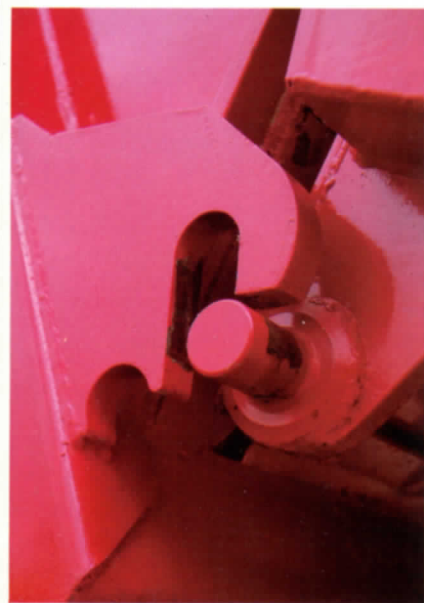


VERSATILITY

MODULAR HYDRAULIC TRAY



BACKEND CONTROLS



AUTOMATIC
TAILGATE LOCKS

hydraulic cylinder activated stabilizing legs, high tensile steel structure, an additional multi-function push button station with automatic logic and manual overrides.

MODULAR HYDRAULIC TRAY

Quick change tray speeds inspection and service. Modular design eliminates many hoses and fittings. All hydraulic adjustments are made here.

AUTOMATIC TAILGATE LOCKS

Simple. Quick. Positive action. Eliminates wasted time and effort

battling with outdated turnbuckles. Avoids crew hazard. Needs no maintenance.

BACKEND CONTROLS

Controls mounted one or both sides. START, STOP, REVERSE and cab signal BUZZER. Waterproof shielded pushbuttons require intent to operate. Crew have complete control of cycle and can operate to handle any problem load.

INSPECTION AND MAINTENANCE

Body, hopper and pack mechanism

elements are designed and arranged for quick removal and installation with ordinary shop tools and standard supply Phoenix Maintenance Accessories. All hydraulic components, solenoids, limit switches, control logic elements are North American industrial standards available from national suppliers or through Jaeger Canada Factory parts and service. Fully detailed Service and Maintenance Manuals supplied.

to operate, fast and easy to load, reliable, convenient to service and maintain.
building the finest special purpose engineered mobile equipment.

PH PRODUCTIVITY

Large 3 cu. yd. hopper swallows refuse. Full 84" inside width accommodates furniture, brush and white goods. Fast cycle: only seconds of delay before reload. Versatile packing mechanism is under full operator control. Pack-On-The-Move option cuts seconds from each stop.



2M LESS GETS MORE

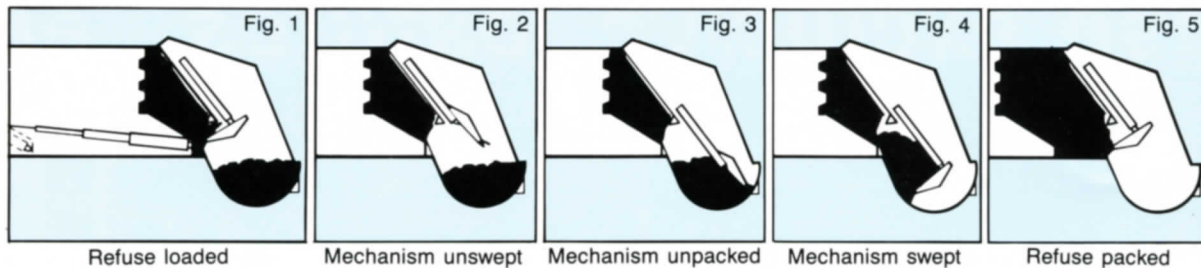
Slim 80" wide body, extra high compaction. Highest payload to body weight ratio in the industry. Enhanced vehicle manoeuvrability makes narrow lanes seem like boulevards. Light, tough body saves fuel and minimizes GVW required.



NO HANG UPS

Tailgate unlocks automatically. No turnbuckles to unscrew or disengage under pressure. Discharge function is completely controlled from station near cab. Operator is away from rear of body. Extra control actuates sweep cycle while hopper is raised to quickly and conveniently clear refuse. Angled ejection ram gives smooth fast action for barrier to push out contents. Absence of nose cone promotes rapid clearing of barrier face.

THE PACKING CYCLE



PACKING MECHANISM OPERATION

The packing mechanism consists of three hydraulically operated plate assemblies. Sweep plate, packer plate and barrier plate sequence as illustrated in Fig. 1-5. Total cycle time is 24 seconds. Loading can recommence just 7 seconds after cycle start and the mechanism can complete a cycle during vehicle motion if desired. Pinch point stop (ANSI Z245.1) feature is standard.

SPECIFICATIONS

Tailgate The hopper floor is 1/4 in. abrasion resistant high tensile steel. Tailgate structure is high tensile steel generously reinforced with formed steel channels. The entire unit with packing mechanism is rigidly attached to the body by massive hinges and automatic locks. Continuous welding throughout.

Body The body is continuously welded, high tensile steel braced by large steel channels forming complete body hoops to eliminate deformation. Floor is abrasion resistant steel. The floor substructure has integral longitudinal steel channels to form the chassis mount and provide body stiffness.

Ejection Barrier Constructed of high tensile steel to form a rigid wall to accept compacting loads and be a distortion free ram for ejection operation. The use of an angled three-stage hydraulic cylinder eliminates a barrier nosecone to permit clean discharge. Phosphor bronze shoes reduce barrier guide friction.

Hydraulic System Crankshaft or live PTO 17 USGPM Vane pump drive. Separate 22USG hydraulic tank with sight glass, magnetic plug. Suction filter (140 micron) and full flow pressure filter (10 micron). System pressure 3000 psi minimum during pack cycle or discharge operation. Modular control tray. Full flow bypass to tank when system inactive. Cylinders tested to 4500 psi, hard chrome rods. Hose, tubing and fittings 5000 psi test. System has integral pressure reliefs in case of jamming. Auxilliary pneumatic system controls engine speed during operation.

Control System Modular solid state design, in waterproof enclosure containing full logic system with visual operation sequence display. Conduit, and junctions are waterproof and corrosion resistant.

Operating Stations Master panel in cab activates all circuits through OFF-LOAD-DISCHARGE switch. LOAD setting activates rear pushbutton station. DISCHARGE position activates manual controls for tailgate raise, lower and ejection barrier movement, and hopper clearing cycle. Cab signal buzzer, auxillary light switches, included.

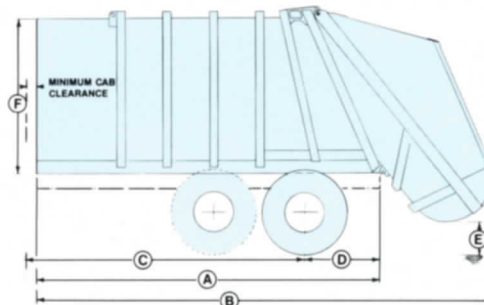
Paint Finish Standard finish is primer, plus one coat automotive enamel. All finish requirements by type or colour can be supplied on request at time of ordering.

Other Units supplied with federal and state approved traffic markers, lights, licence mount, fenders and mud flaps. One hopper floodlight standard.

Bin, Box and Rear Loading Containers Mechanisms are available on request to handle all popular types of refuse bins, boxes and containers to considerably extend work flexibility.

Additional Options Crew riding steps, handholds and a comprehensive range of options are available to aid safety, convenience and special requirements.

Mounting Phoenix compactors can be mounted to all suitably equipped, dimensionally appropriate chassis of sufficient GVWR. Mounting to chassis can be performed at Jaeger Canada Factory or at Factory Authorized Depot or by Owner to Factory Instructions.



MODEL	SERIES 2M			PHOENIX PH				
	SIZE	2M8	2M10	2M12	PH15	PH20	PH23	PH28
Net Body Capacity	cu. yds.	10	13	16	20	25	30	35
A Platform Length	in.	107	137	158	150	195	215	260
B Overall Length	in.	168	198	219	225	270	290	335
C CA/CT Min. Clear	in.	85	115	136	128	151	171	216
D AF Chassis Cut Off (minimum)	in.	26	26	26	26	52	52	52
Body Weight	lbs.	8,100	8,600	9,300	10,500	11,700	12,300	13,800
Payload Rating	lbs.	12,000	15,000	18,000	20,000	25,000	30,000	35,000
GVWR Chassis (Typical)	lbs.	28,000	32,000	35,000	39,000	48,000	56,000	60,000+

SERIES		2M	PH
Hopper Capacity	cu. yd.	2	3
Hopper Width	in.	72	84
Body Width	in.	80	96
Load Rail to Chassis	in.	+2	-2
Minimum Cab Clearance	in.	4	8
E Ground Clearance	in.	14 min.	16 min.
F Body Height (above chassis)	in.	87	91
Hopper Raised (above chassis)	in.	122	142
Normal Compaction	lbs./cu. yd.	1000-1200	800-1000

HYDRAULIC CYLINDERS

LOCATION	QTY	BORE
Sweep	2	3 1/4 in.
Pack	2	4 in.
Hopper Lift	2	3 in.
Eject (3 Stage)	1	4 3/4 in.

PRECAUTION: All dimensions and specifications are subject to change without notice. Descriptions and data contained herein are for information only and shall not be construed to warrant suitability of the product for any particular purpose as performance may vary with conditions encountered. The only warranty applicable is our standard written warranty.

Jaeger Canada Equipment Ltd.
 43 Gaylord Road, St. Thomas, Ontario, Canada N5P 3S1
 (519) 631-5100 Tx (064) 73535
 Bridgeport CT (203) 366-6602 Atlanta GA (404) 522-7128
 Chicago IL (312) 263-0690

ClassicRefuseTrucks.com Library