

LoDaL offers the new...

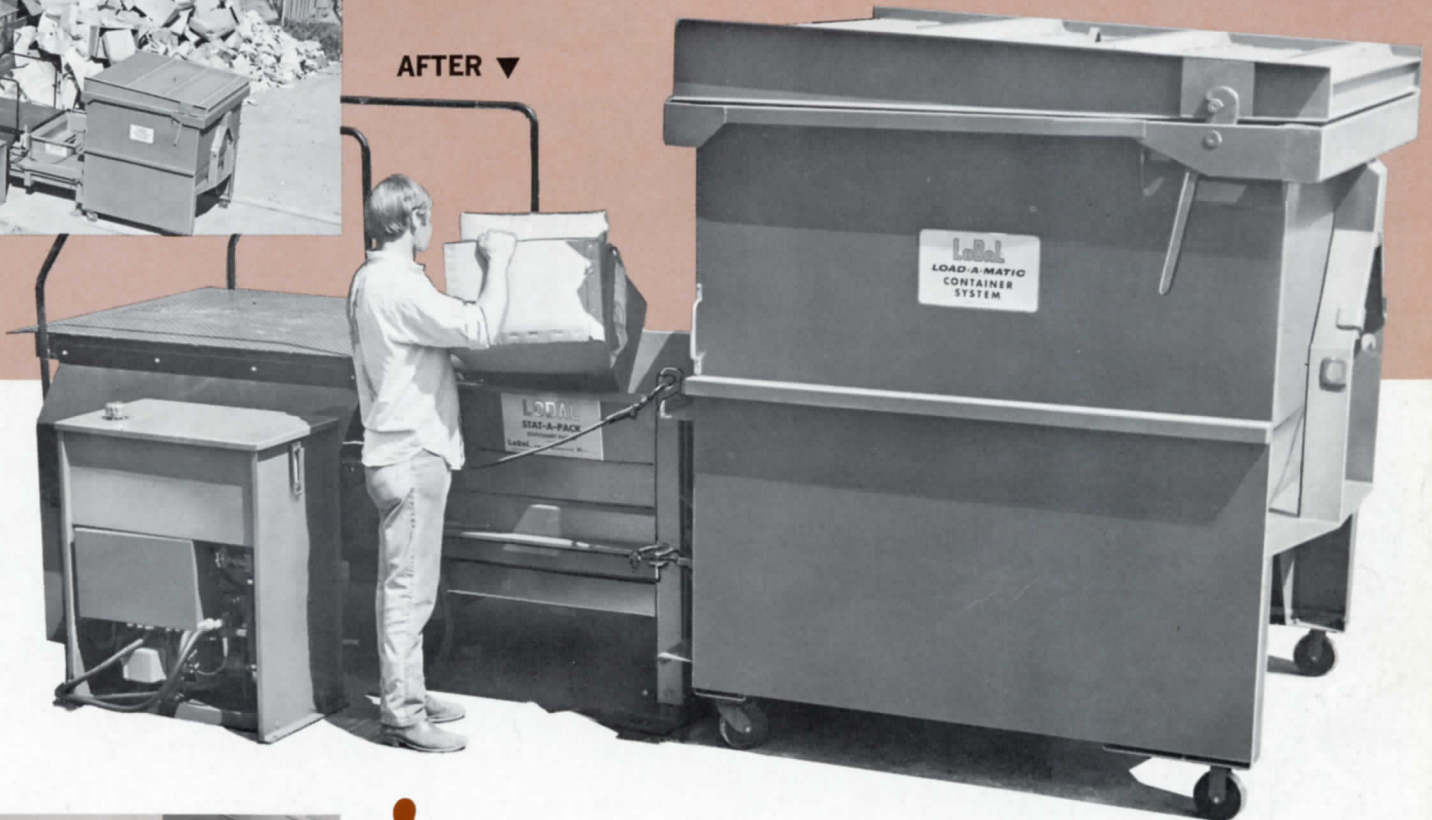
Stat-A-Pack STP-10

... the better reducing machine*



◀ BEFORE

AFTER ▼



* A stationary packer is a reducing machine

REDUCES volume of loose refuse by crushing it into closed container.

REDUCES fire hazard, vermin and pilferage.

REDUCES frequency, and therefore cost, of collection.

The STP-10 has every advanced idea in stationary packer design . . . develops 40,000 lb. compaction force . . . remote power pack for versatility of installation and ease of maintenance . . . remote pendant control switch can be installed anywhere, moved anytime . . . receiving container holds 8 cu. yds. of highly compacted refuse. Options include LoDaL's exclusive "power pull-on" system which automatically aligns container and pulls it into locking position against packer frame . . . walk-on deck with hand rails, adjustable for various dock heights . . . hopper extensions of all sizes and types . . . continuous cycle timer.



The STP-10 is serviced by the LoDaL Load-A-Matic front loader with the triangle coupler, or by other types of front loader units. It may also be used with roll-off containers or rear hoist units. Complete flexibility as to type of receiving container !!

Unlimited Applications!

Stores . . . Shopping Centers . . . Schools . . . Hospitals . . . Hotels . . . Motels . . . Restaurants . . . Industries. Anywhere a large volume of refuse is generated.



Specifications • STP-10

Note: The following specifications are subject to change without notice.

Weight (approx.)	Compactor Unit 1800 Lbs. Container 1600 Lbs. Power Pack 375 Lbs. (dry)
Dimensions (Main Frame)	112" L x 62" W x 51" H w/o Container
Loading Chamber (dry floor design)	
Dimensions	48" W x 30" H x 37" L
Capacity	1.14 Cu. Yds.
Platen Area	20" x 48"
Compaction Force (approx.)	40,000 Lbs.
Cycle Time	42 Seconds
Electrical	
Motor	10 HP; 208-230/460 (motor wired for 230 Volts unless 460 Volts specified with order) 60 cycle; 3 phase; 1740 R.P.M.; Drip Proof
Controls (located in portable pendant)	(1) Key Operated On-Off (2) Single or Auto-cycle (3) Locking Manual Control Switch (4) Emergency Stop-Choice of stop Location Optional (5) Controls—110 Volts
Hydraulic	
Pump	9 G.P.M.—2000 P.S.I. and 1740 R.P.M.
Compactor Cylinder	5" Bore, 48" Stroke
Control Valve	Electric Solenoid, Direct Acting
Reserve Tank	32 Gal. Cap., 24 Gal. Working Level, With Suction Strainer and Replaceable Return Filter
Paint Color	Caribe Green

RECEIVING CONTAINER MODEL RC-80

Designed for use with LoDaL Load-A-Matic (LAM) System. 8 cu. yd. capacity, Hinged Top Covers w/heavy duty locks; 6 in. heavy duty casters; fabric charge opening cover, LoDaL triangular coupler, tare weight approx. 1600 lbs.; Paint Color—Caribe Green. Optional RC-80-S container has engaging sleeves for standard fork-type front loader in lieu of LoDaL triangular coupler.

OPTIONAL EQUIPMENT AND ACCESSORIES (at nominal extra cost)

Power Pull-On With Guide	STP-10-2	Hopper Extension, Side Opening	STP-10-5
Walk-On Deck With Hand Rails	STP-10-3	Hopper Extension, Back Opening	STP-10-6
Platen Slide Cover	STP-10-4	Timer For Control Circuit	STP-10-7

Stat-A-Pack STP-10 by

LoDaL[®] INC.

KINGSFORD, MICHIGAN 49801