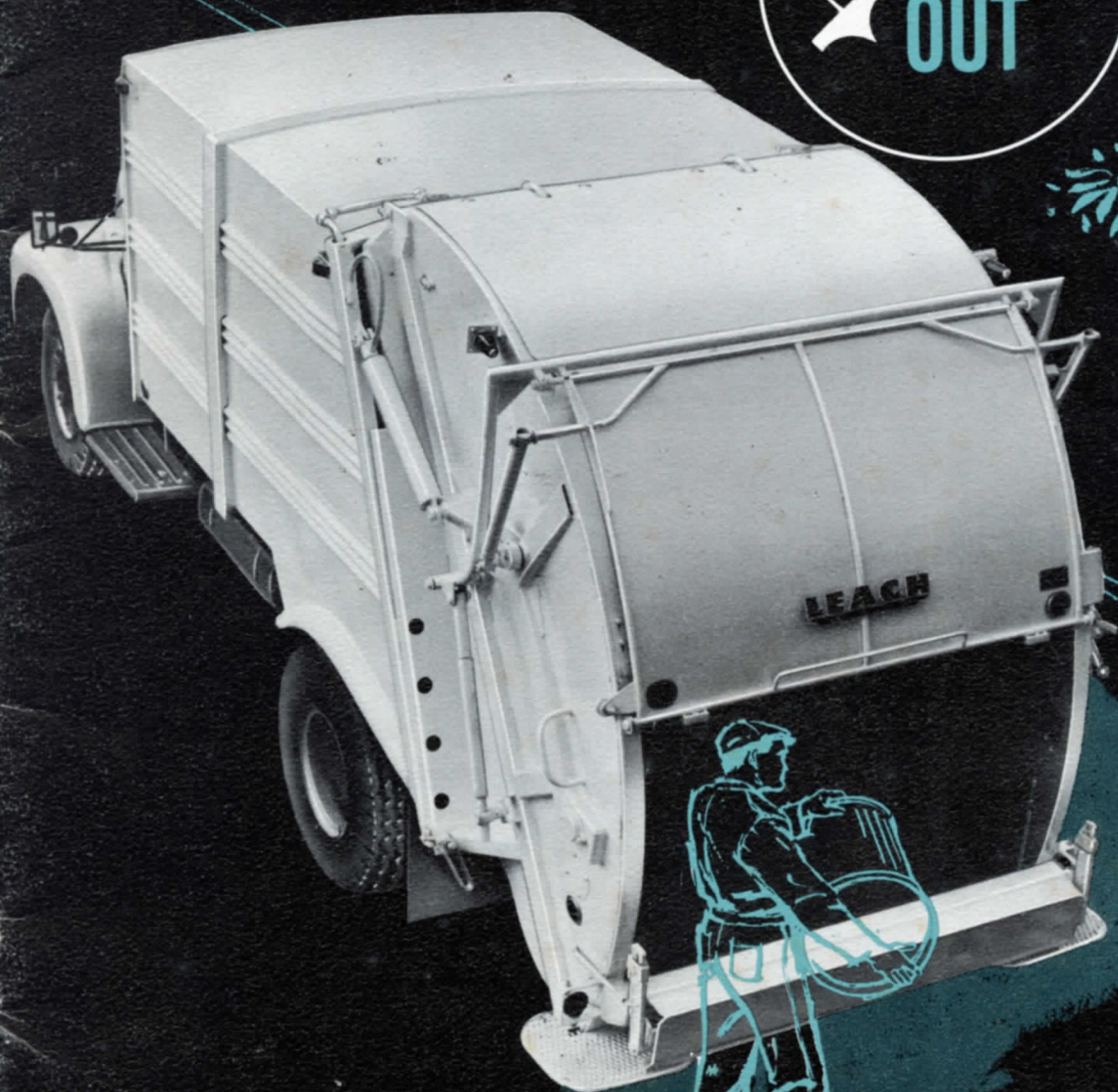


# new LEACH PACKMASTER®

with

**PUSH  
OUT**

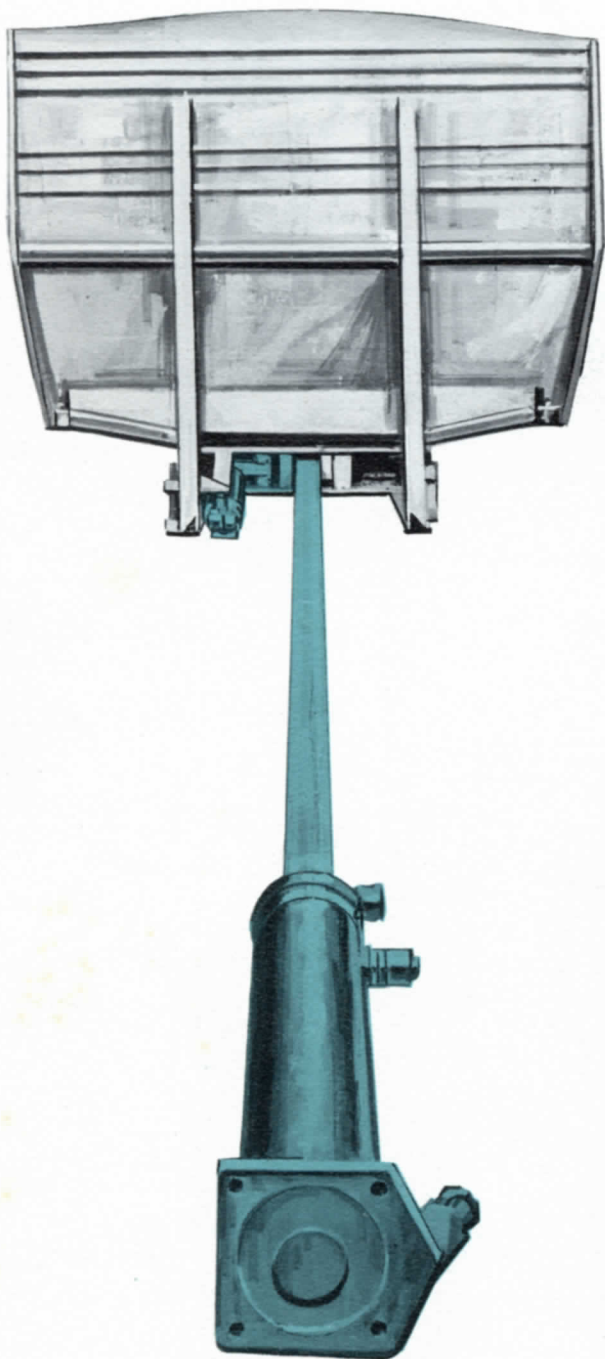


**LEACH**  
GUARANTEED QUALITY

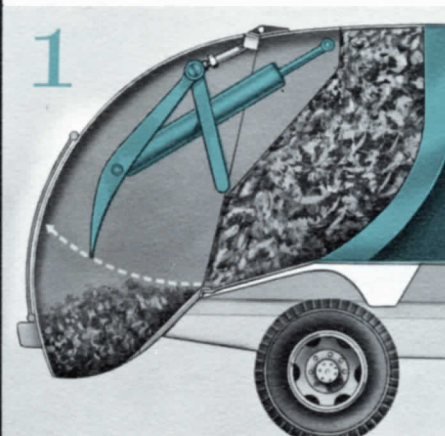
AMERICA'S MOST EFFICIENT REFUSE COMPACTION UNIT

# NOW...in addition to all its other

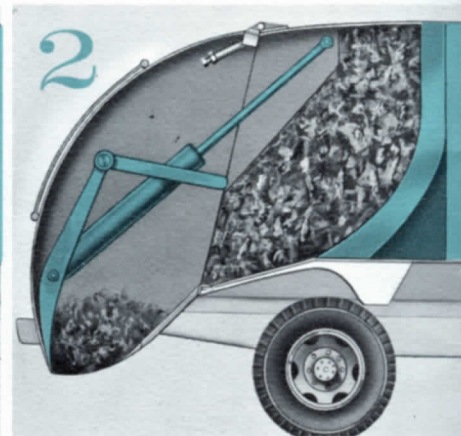
## A LEACH PACKMASTER WITH



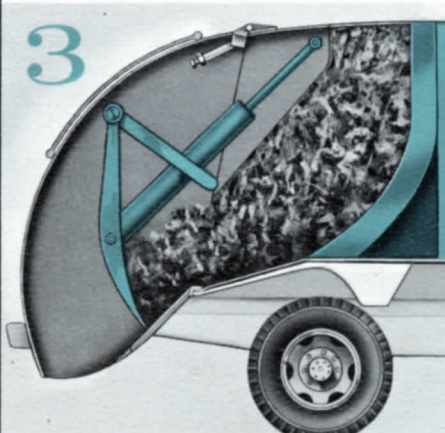
HOW THE NEW DOUBLE-ACTION  
**PACKMASTER "WISE"**  
 CRUSHES REFUSE INTO THE  
 GREATEST PAY LOADS EVER!



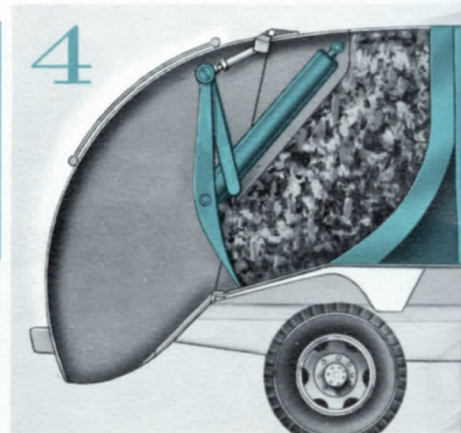
1  
 Packer Plate moves over load (no pushing of material back onto street)...returns behind the load.



2  
 Beginning of packing action. Blade is positioned behind load, but blade will not scrape hopper body to cause excessive abrasion from ashes and dirt.



3  
 Bulk of hopper load has been pushed into body. Two heavy-duty, 6-inch, double-acting cylinders perform the work. The "in-out" action of these cylinders and the strategic location of pivot pins result in maximum leverage of packing blade.



4  
 Sequence completed. Note: Packer Plate not only compacts load against Push-Out Plate, it also retains load after packing cycle is completed. Also important: Packer Plate moves full 12" into body area to provide even greater compressibility!

### THE SECRET IS HERE . . .

Again, LEACH Practical Design has provided the PACKMASTER buyer with compaction performance unequaled in its size class.

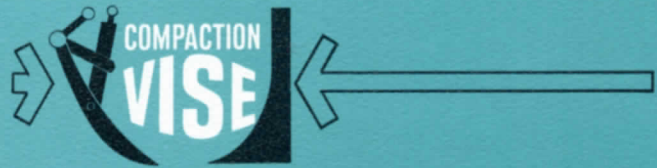
Only two non-telescopic cylinders control the entire Push-Out mechanism which both discharges load as well as assists in packing action. In addition, mechanism is located ahead of the load for easy accessibility in maintenance.

# top quality features

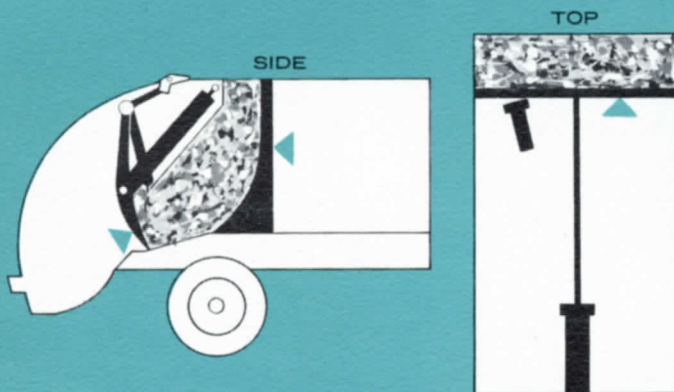
**PUSH  
OUT**

WITH DOUBLE  ACTION COMPACTION  
AND **PUSH-OUT** DISCHARGING OF LOAD!

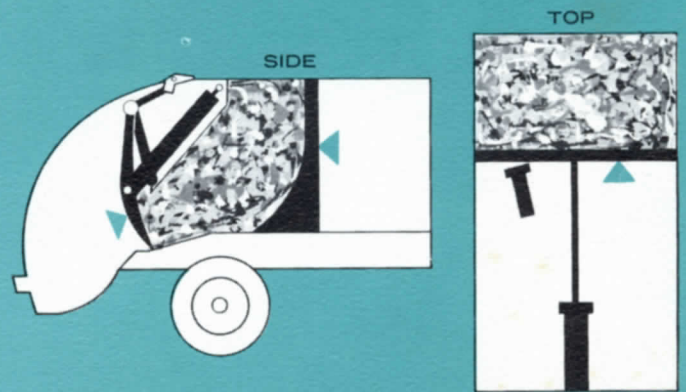
## THE PACKMASTER



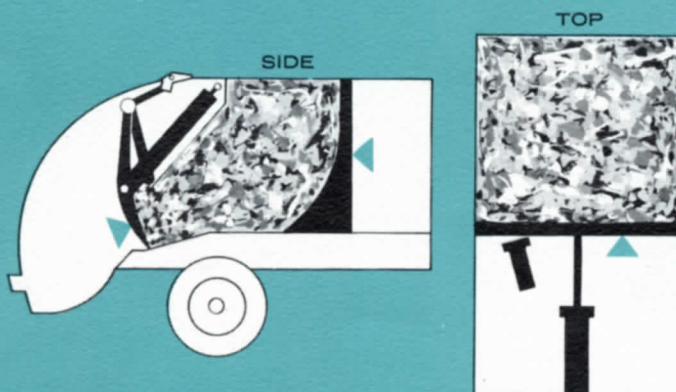
HOW PACKER PLATE AND PUSH-OUT PLATE CRUSH REFUSE  
BETWEEN EACH OTHER INTO AIR-TIGHT BALES!



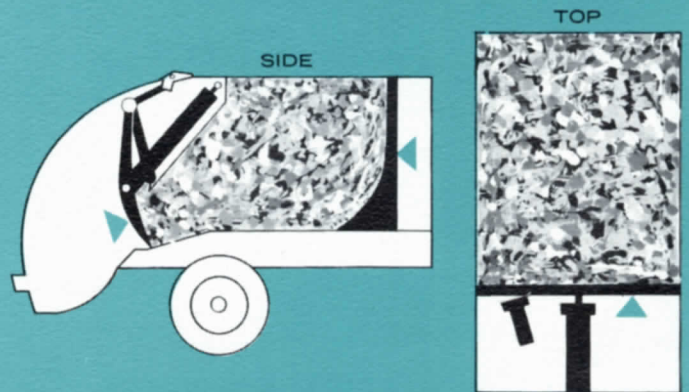
**1** Packing begins as Packer Plate, pushing from one direction . . . against Push-Out Plate from the other, compress refuse between.



**2** Larger and larger load is built up as Packer Plate continues to push hopper load after hopper load into body.



**3** Load is built up even further. However, at this point, Push-Out Plate lever is actuated toward rear of body. With both Packer Plate and Push-Out Plate exerting maximum pressures toward each other, load between is literally squeezed into a solid bale of refuse. This action may be repeated and repeated as body becomes filled.

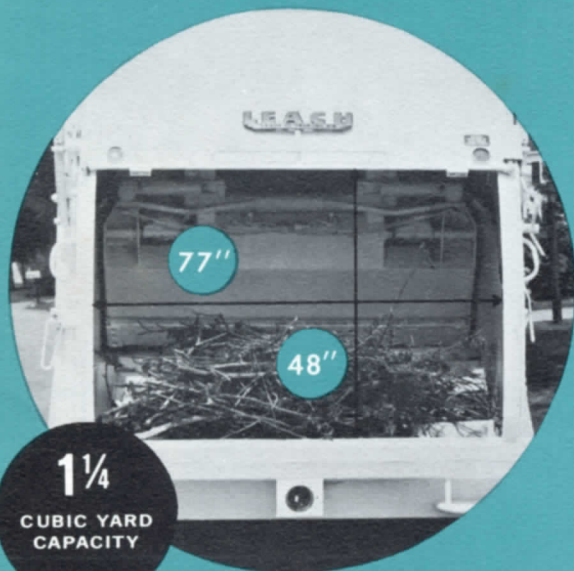


**4** Fully compacted Load with all voids filled. Procedure of both Packer and Push-Out Plates exerting maximum pressures against each other has been followed. Every last bit of bulk is crushed out of refuse. A record-setting pay load has been achieved.

# Here are the built-in extras in every

## EXTRA LARGE HOPPER

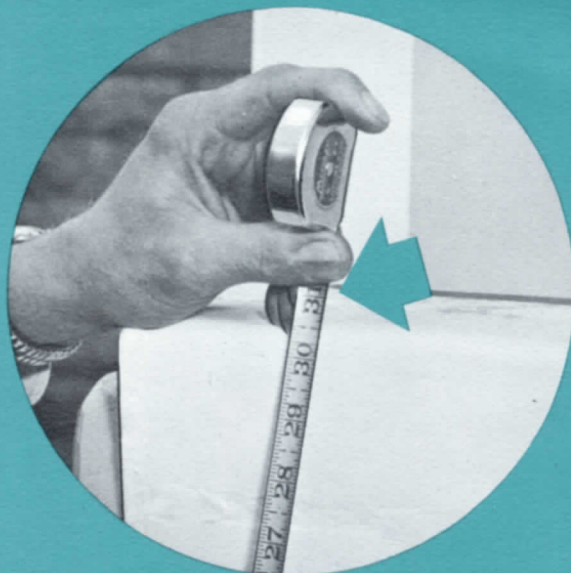
The spacious hopper of the LEACH PACKMASTER means several user-benefits. First . . . fewer packing cycles are required. This, in turn, means less wear on moving parts . . . less dollars spent in maintenance costs . . . less time consumed emptying hopper into body.



Another advantage of larger hopper . . . two men can load simultaneously . . . particularly adaptable to working both sides of the street or one way streets.

## LOW, EASY LOADING

First in the industry with this feature, the PACKMASTER hopper is a full 5" below truck frame, or an average loading height of only 31 inches.



Low loading height results in best possible working conditions for collection crews . . . reduces strained muscles, hernias, etc., caused by high, heavy lifting . . . faster and neater loading . . . in Short: more collections are made each day at much less effort!

# LEACH PACKMASTER

## CONSUMES ALL TYPES OF REFUSE

### LITERALLY TRUE

The stack of boxes, crates, oil drums, chairs, sofa, mattress in photograph are items the PACKMASTER will consume readily . . . and are picked up every day in cities all over the world.

There is no need to leave behind certain types of refuse. The PACKMASTER picks up everything the first time around.



**FAST...  
SAFE...  
SIMPLIFIED  
LOADING AND DUMPING**  
...complete cycle takes only seconds



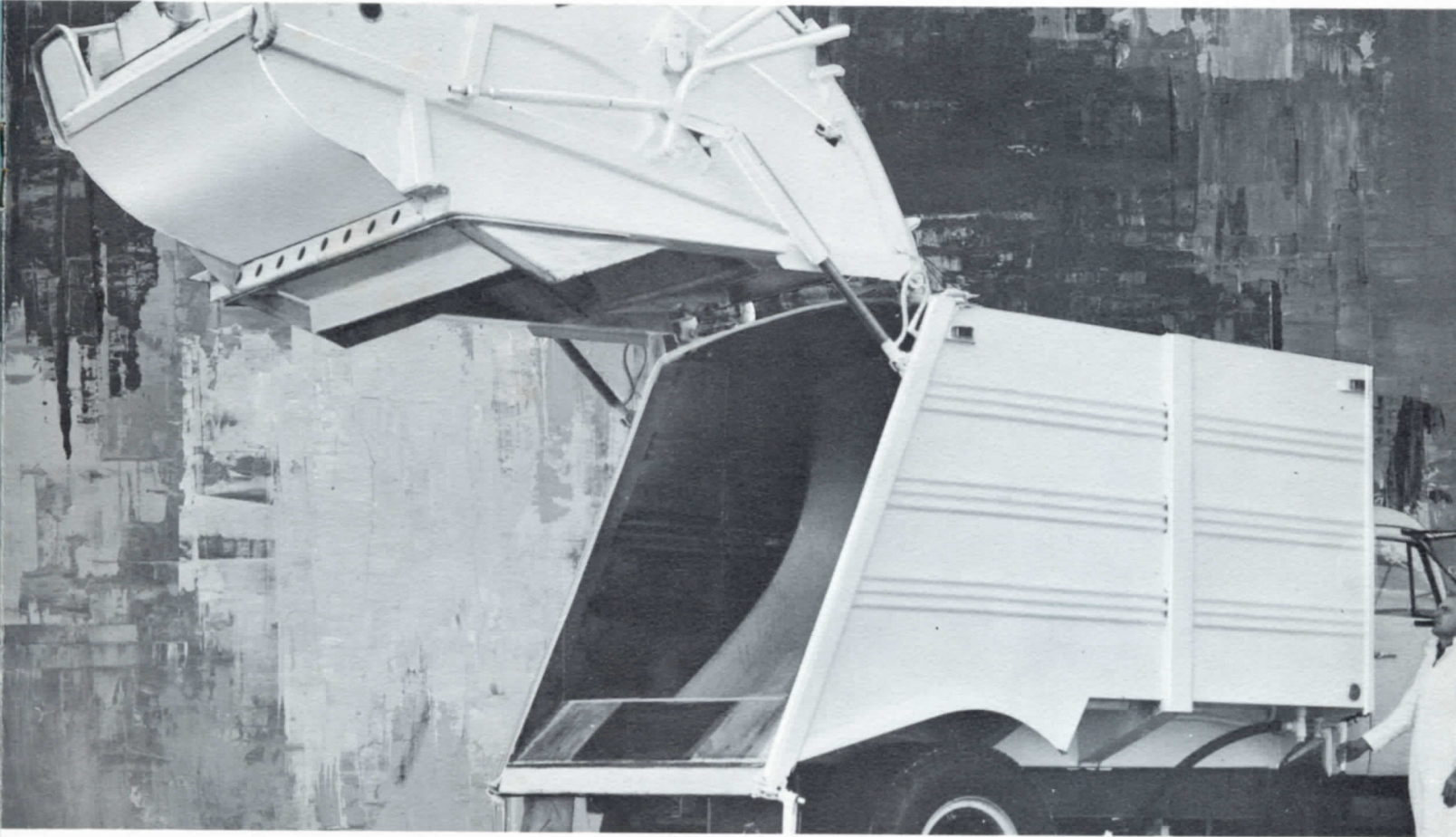
**SINGLE-LEVER  
CONTROL FOR  
PACKER PLATE**

A popular built-in Leach feature since the first PACKMASTER was built — a single movement of one lever starts automatic loading cycle . . . no holding or manipulation of levers is required . . . crews can be trained in minutes.

**DUAL-PURPOSE SAFETY DOOR**

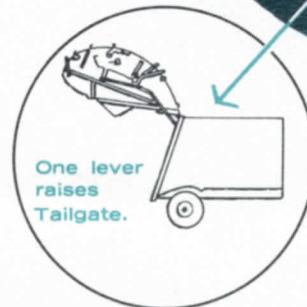
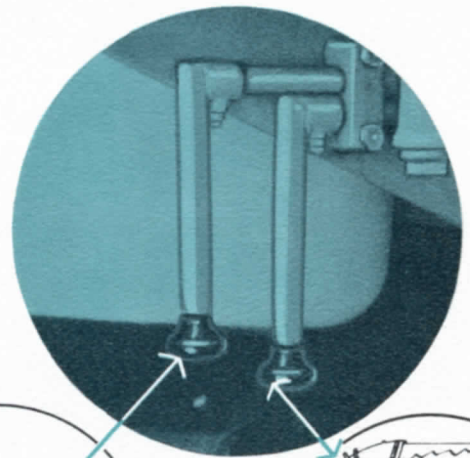
When used automatically, the Dual-Purpose Safety Door closes as the cycle begins giving loaders the extra safety of a sealed-off hopper. As the packing plate reaches the loading edge of the hopper, the door automatically opens. The crew can then start reloading. It is not necessary for the crew members to stand by during the packing operation. Instead they are free to make their next pick-up.

# SINGLE-LEVER CONTROL OF PUSH-OUT PLATE



Only one lever is required to actuate Push-Out Plate in packing load against Packing Plate. **Same lever** is also used in discharging of load after tailgate has been raised.

**IMPORTANT:** Push-Out and Tailgate controls are mounted in Dual, one each side of PACKMASTER by cab, to save steps during packing operation.

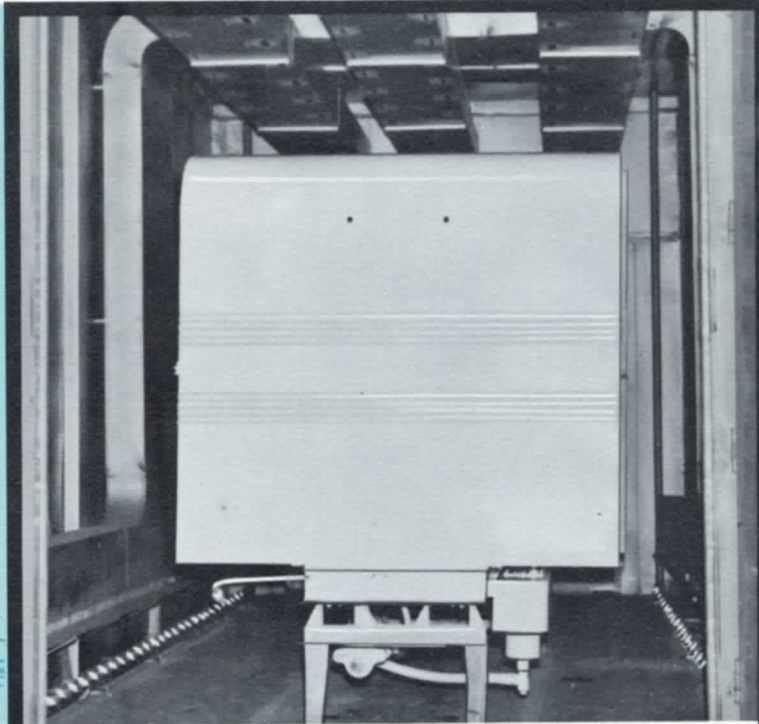
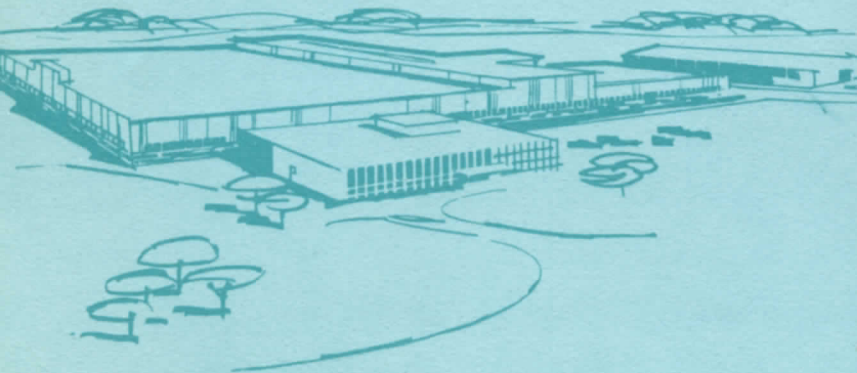


# EVERY **PACKMASTER** IS LEACH-QUALITY CONSTRUCTED UNDER THE MOST EXACTING CONDITIONS!

No refuse unit in the industry can match the quality and performance reputation of the LEACH **PACKMASTER**. This reputation is established in all buyer groups . . . Contractor . . . Municipal . . . Institutional and Industrial.

**PACKMASTER** acceptance is largely the result of the exacting manufacturing requirements established by Leach Company's over 75 years of experience. This includes all phases of research, design, engineering, as well as the quality step-by-step manufacturing process in Leach's new, modern plant.

Typical of this is **Leach's Quality Control Policy . . . over 90% of the component parts that go into every LEACH **PACKMASTER** are made in the Leach Plant!**



Example of Leach Company's insistence of top quality is its 5-step baked-on enamel finish for all sizes of **PACKMASTERS** and **LEACH** Containers. Every **PACKMASTER** is continuously welded throughout with no "short cuts" . . . thoroughly ground, shot-blasted . . . then wash-primed, baked prime-coated . . . and followed by a final coat of high gloss enamel, both coats baked at 200° Fahrenheit!

## There is a suitable **PACKMASTER** for every **PACKMASTER** user

LARGE CONTRACTOR . . .

SMALL CONTRACTOR . . .

LARGE CITY . . .

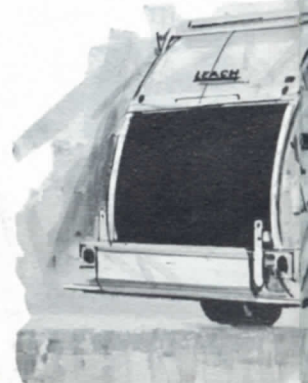
SMALL CITY . . .

INSTITUTIONS . . .

INDUSTRIES . . .

**A **PACKMASTER** TO FIT EVERY NEED!**

**13 cu. yd.**



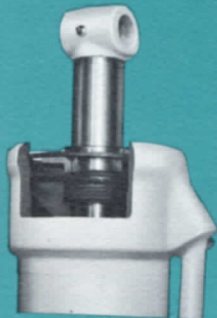


# BASIC **PACKMASTER** COMPONENTS...

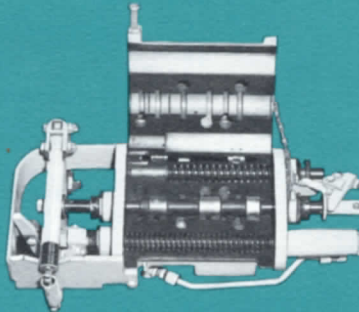
all designed and manufactured  
in Leach Company plant.



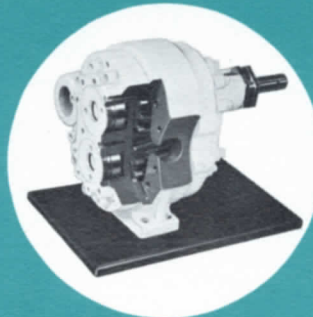
**RUGGED . . . EXTRA HEAVY-DUTY TAILGATE**—Designed with far more strength than ever required on the job . . . a real built-in extra.



**MAIN HYDRAULIC CYLINDER**—Another example of Leach exacting standards is the Main Hydraulic Cylinder, an essential component of the Packer Plate mechanism. High degree of efficiency of this cylinder contributes much to the **PACKMASTER'S** record-setting compaction and every-day-on-the-job reliability!



**MAIN OPERATING VALVE**—Controls raising and lowering of tailgate. Valve is precision machined inside Leach Plant. Another instance of rigid quality control.



**PRECISION - BUILT HYDRAULIC PUMP**—Provides pressure for hydraulic system. Close tolerance of gears (to 3/10,000 of an inch . . . less than half the thickness of a cigarette paper!) . . . are the secret of pump's ability to deliver high pressures at slow engine speeds.

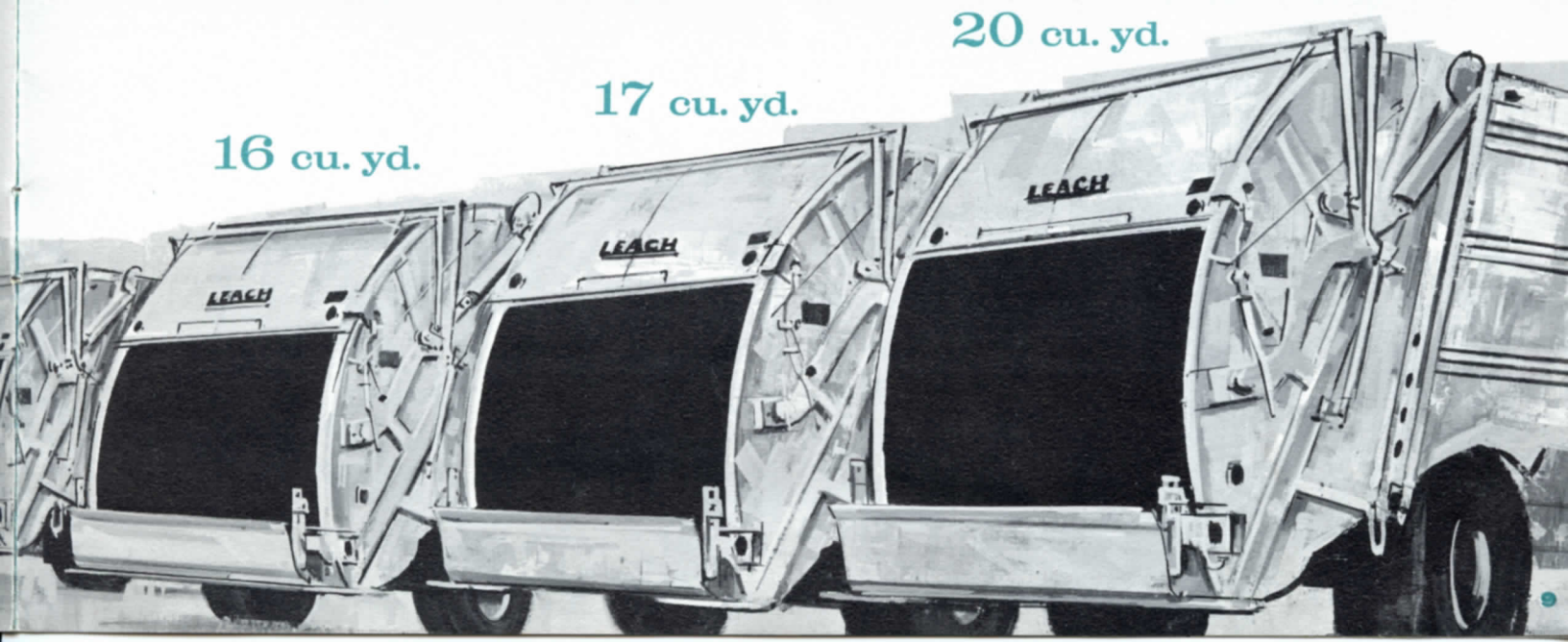


**PACKER PLATE BLADE**—Heavily reinforced inside with 5/16" **COR-TEN\*** steel for extra durability . . . equal to that used in finest quality road grader blades.

\*Trademark by U. S. Steel



**BULLDOZER-CRUSHER — PUSH-OUT PLATE**—An important part of the Packmaster Compaction-Vise is the "Bulldozer-Constructed" Push-Out Plate. Durability . . . Ruggedness . . . Power-Plus . . . are key words which spell out the superlative performance of this integral part of the Push-Out mechanism.



16 cu. yd.

17 cu. yd.

20 cu. yd.

# ACCEPTED AS THE NUMBER

## CONTRACTORS



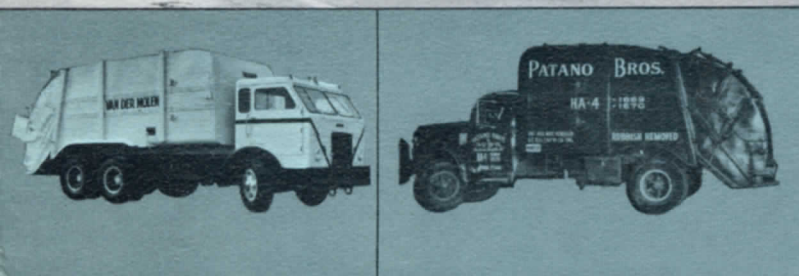
Contractors know the **profit-factors** in doing business . . . every-day-on-the-job reliability . . . top consistency in pay loads . . . low maintenance . . . durability that means the unit will stand up under the roughest of conditions . . . **PACKMASTER** has it!

From the very largest to the one-truck-sized Refuse Contractor, no unit in the industry equals the reputation of the **LEACH PACKMASTER**.

## MUNICIPALITIES

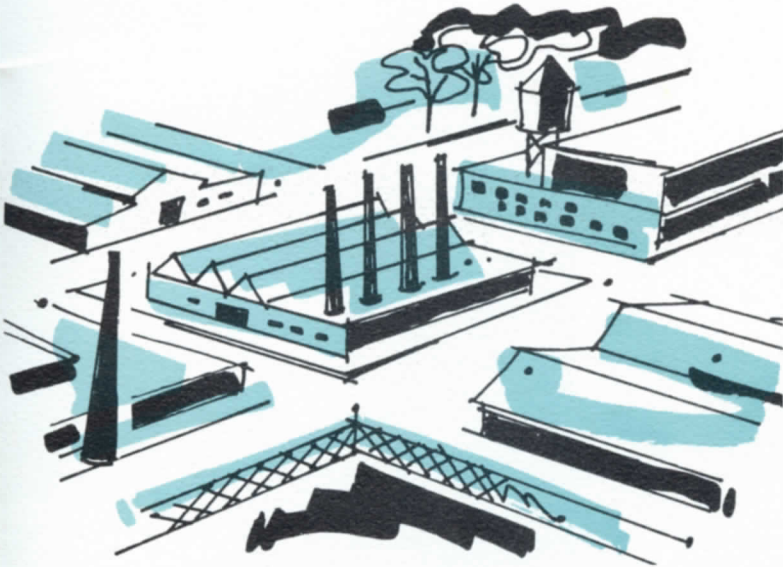


Hundreds of cities of every size . . . from East-West-North and South . . . know the benefits of the **LEACH PACKMASTER** . . . benefits that include fast, efficient pickup **with no restrictions** as to types of refuse . . . **Ruggedness** that meets the challenge of hard usage in all climates under all conditions . . . **Performance** uninterrupted by frequent breakdowns . . . **Simplicity** of operation enabling crews to be trained in minutes . . . and the industry leader in built-in **safety factors** for operator's protection.



# ONE COMPACTION UNIT BY:

## INDUSTRIES



As America has grown, so too has industry's refuse disposal problem grown with it. All across the nation industrial companies have come to learn the many advantages of LEACH PACKMASTERS and the LEACH Container System. Whether factory owned or contractor serviced, the name LEACH has led the field in acceptance.

The same reliability and low operating costs which make the PACKMASTER so popular in other markets also is the reason for its Number One acceptance in industry.

## INSTITUTIONS

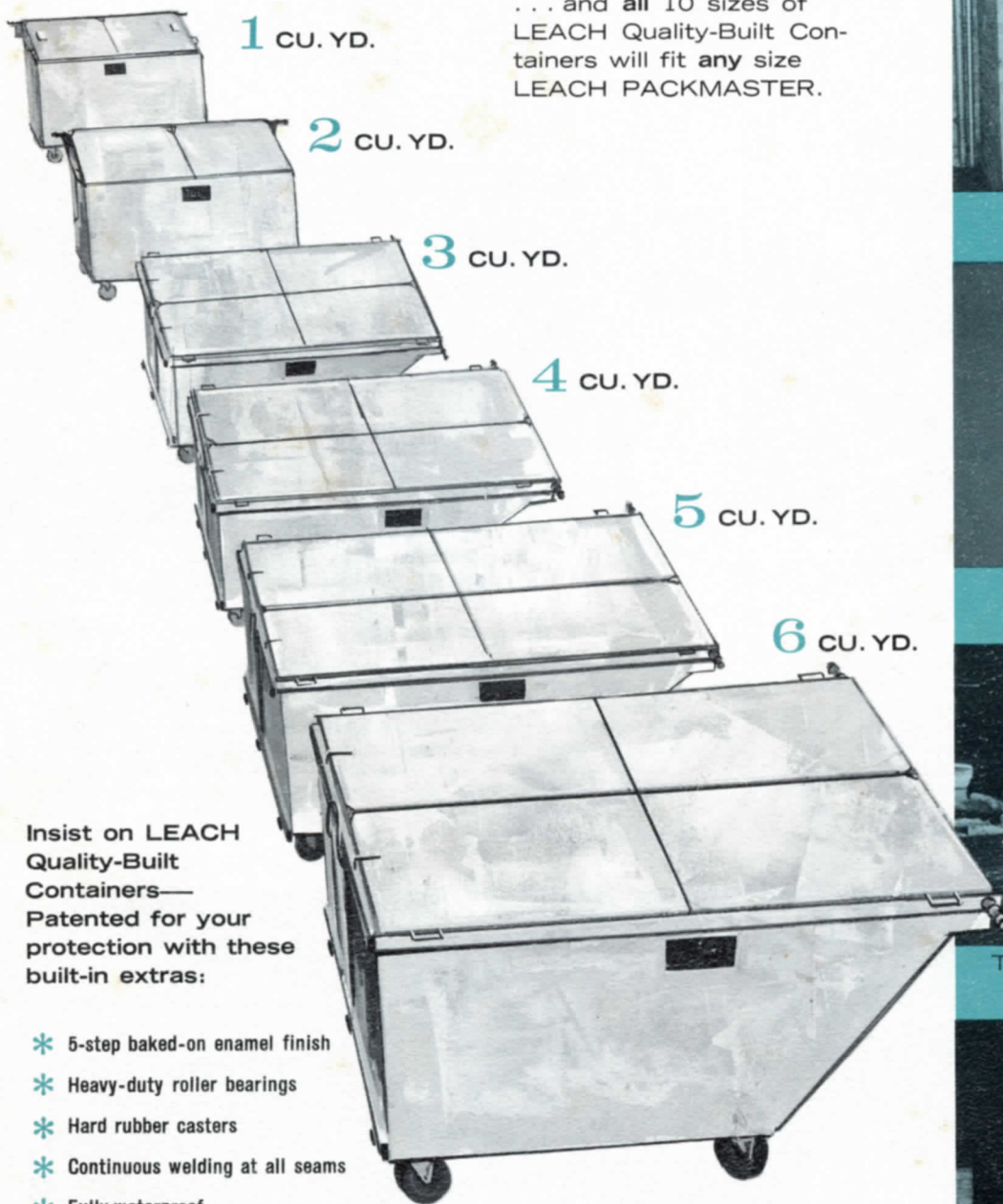


No one area today can escape the need for efficient storage, removal, and disposal of refuse. Well established and growing in the Institutional field is the LEACH PACKMASTER and LEACH Container System. Universities, Hospitals, Veteran Facilities, Government, Housing Developments in every section of the country know the unequalled compaction efficiency of the LEACH PACKMASTER. Again it is chosen First because of its ability to deliver number one performance all the way!



# ADAPTABLE TO ALL SIZES OF LEACH CONTAINERS

Fastest growing auxiliary use to the efficient LEACH PACKMASTER is the LEACH Container System . . . and all 10 sizes of LEACH Quality-Built Containers will fit any size LEACH PACKMASTER.



Insist on LEACH Quality-Built Containers—Patented for your protection with these built-in extras:

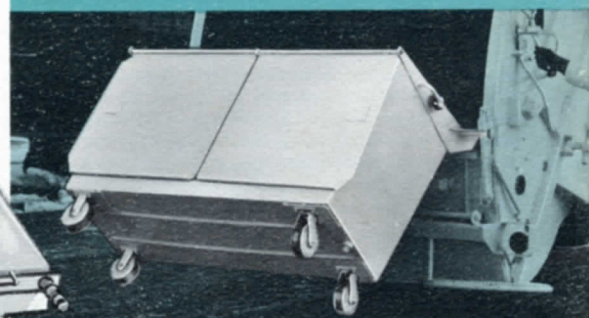
- \* 5-step baked-on enamel finish
- \* Heavy-duty roller bearings
- \* Hard rubber casters
- \* Continuous welding at all seams
- \* Fully waterproof... factory immersion tested
- \* Durable 14 gauge steel construction



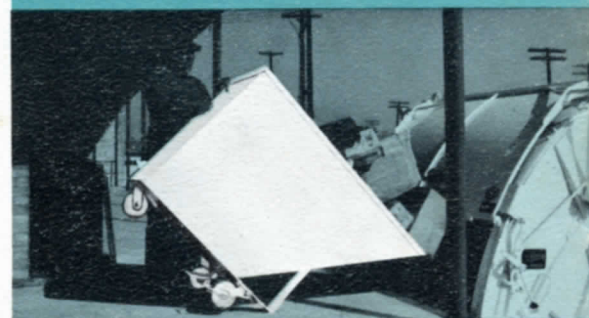
They're Mobile — Pass easily through standard doorways



They're Sanitary — Fireproof - Ratproof - Leakproof



They're Time-Savers — Automatically dumped — eliminates heavy lifting



They're Versatile — Dock Unloader for dumping direct into PACKMASTER

**elgin**

**ELGIN LEACH CORPORATION**

**leach**

SANITATION HEADQUARTERS  
222 West Adams Street • Chicago, Ill., 60606

OVERSEAS DISTRIBUTION:  
THE VREELAND INTERNATIONAL CORPORATION  
393 Seventh Avenue • New York 1, New York

L. I. SANITATION EQUIPMENT CO., INC.  
61 OAK DRIVE  
SYOSSET, N. Y. 11791