

# 18 YD. LEACH PACKMASTER®

with

**PUSH  
OUT**



**LEACH**  
GUARANTEED QUALITY

AMERICA'S MOST EFFICIENT REFUSE COMPACTION UNIT

# SPECIFICATIONS: LEACH PACKMASTER

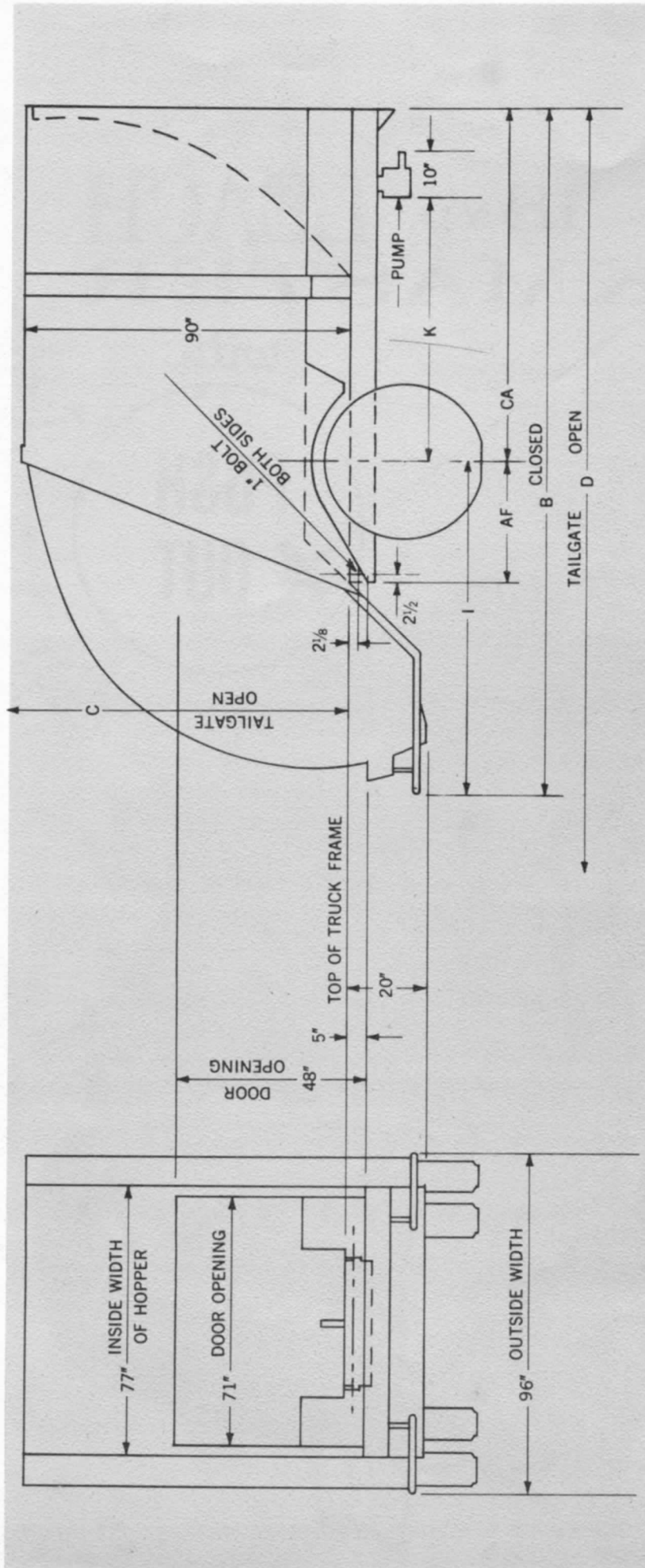
PUSH  
OUT

WITH

# LEACH PACKMASTER

CAPACITY	AF	B	C	CA	D	I	K	NET WEIGHT	HOPPER CAPACITY
18 YD.	34½	208	148	120*	258	88	96	9,890	1¼ YD.

\* Note: CA dimension shown is nominal and may be shorter or longer depending on load distribution limitations and tuning radius requirements.



Note: The truck selected must be capable of carrying net weight of body plus weight of refuse to be collected. On Tandem Chassis CA dimension is to C/L of rear most wheel. Attachable Container Packmaster is available. New Dual Door is standard. Specifications subject to change without notice. The Packmaster is manufactured by LEACH COMPANY, OSHKOSH, WISCONSIN and is sold nationally through the distributor organization of . . .

**elgin**

**leach**

## ELGIN LEACH CORPORATION

SANITATION HEADQUARTERS  
222 West Adams Street • Chicago 6, Illinois

L.I. SANITATION EQUIPMENT CO., INC.

61 OAK DRIVE  
SYOSSET, N. Y. 11791